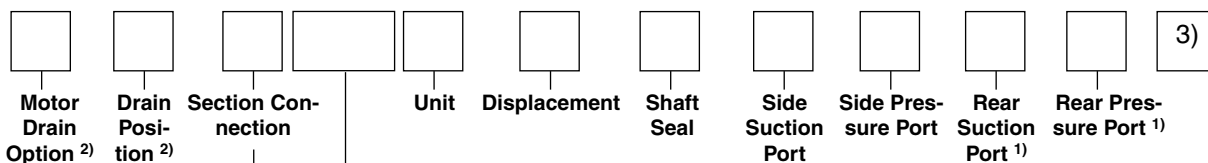


PG																																																																																																																								
Gear Design	Type		Unit	Displacement	Rotation	Shaft	Flange	Shaft Seal	Side Suction Port	Side Pressure Port	Rear Suction Port <sup>1)</sup>	Rear Pressure Port <sup>1)</sup>																																																																																																												
<table border="1"> <thead> <tr> <th>Code</th> <th>Type</th> </tr> </thead> <tbody> <tr> <td>P</td> <td>Pump</td> </tr> <tr> <td>M</td> <td>Motor</td> </tr> </tbody> </table>	Code	Type	P	Pump	M	Motor	<table border="1"> <thead> <tr> <th colspan="2">Design</th> </tr> </thead> <tbody> <tr> <td>Pump and Motor</td> <td><b>620</b></td> </tr> <tr> <td>Pump</td> <td><b>625</b></td> </tr> </tbody> </table>	Design		Pump and Motor	<b>620</b>	Pump	<b>625</b>		<table border="1"> <thead> <tr> <th>Code</th> <th colspan="2">Unit</th> </tr> <tr> <th></th> <th>Pump</th> <th>Motor</th> </tr> </thead> <tbody> <tr> <td>A</td> <td>Single unit</td> <td>Standard Motor without checks</td> </tr> <tr> <td>B</td> <td>Multiple unit</td> <td>Standard Motor with two checks</td> </tr> <tr> <td>C</td> <td>—</td> <td>Standard Motor w. one anti cavitation check (ACC)</td> </tr> </tbody> </table>	Code	Unit			Pump	Motor	A	Single unit	Standard Motor without checks	B	Multiple unit	Standard Motor with two checks	C	—	Standard Motor w. one anti cavitation check (ACC)	<table border="1"> <thead> <tr> <th colspan="3">Displacement</th> </tr> <tr> <th>Code</th> <th colspan="2">Design</th> </tr> <tr> <th></th> <th>620 ccm</th> <th>625 ccm</th> </tr> </thead> <tbody> <tr><td>0160</td><td>16</td><td>—</td></tr> <tr><td>0190</td><td>19</td><td>—</td></tr> <tr><td>0230</td><td>23</td><td>—</td></tr> <tr><td>0260</td><td>26</td><td>—</td></tr> <tr><td>0290</td><td>29</td><td>—</td></tr> <tr><td>0330</td><td>33</td><td>—</td></tr> <tr><td>0360</td><td>36</td><td>36</td></tr> <tr><td>0370</td><td>37</td><td>—</td></tr> <tr><td>0410</td><td>41</td><td>41</td></tr> <tr><td>0440</td><td>44</td><td>—</td></tr> <tr><td>0450</td><td>—</td><td>45</td></tr> <tr><td>0500</td><td>50</td><td>50</td></tr> <tr><td>0520</td><td>52</td><td>—</td></tr> </tbody> </table>	Displacement			Code	Design			620 ccm	625 ccm	0160	16	—	0190	19	—	0230	23	—	0260	26	—	0290	29	—	0330	33	—	0360	36	36	0370	37	—	0410	41	41	0440	44	—	0450	—	45	0500	50	50	0520	52	—	<table border="1"> <thead> <tr> <th>Code</th> <th>Rotation</th> </tr> </thead> <tbody> <tr> <td>C</td> <td>Clockwise</td> </tr> <tr> <td>A</td> <td>Counter clockwise</td> </tr> <tr> <td>B</td> <td>bi-directional</td> </tr> </tbody> </table>	Code	Rotation	C	Clockwise	A	Counter clockwise	B	bi-directional	<table border="1"> <thead> <tr> <th>Code</th> <th>Shaft</th> </tr> </thead> <tbody> <tr> <td>D1</td> <td>13T, 16/32DP, 41.2L, SAE "B" spline</td> </tr> <tr> <td>E1</td> <td>15T, 16/32DP, 46L, SAE "B-B" spline</td> </tr> <tr> <td>E4<sup>4)</sup></td> <td>14T, 12/24 DP, 55.6L, SAE "C" spline</td> </tr> <tr> <td>M3</td> <td>Ø25.4, 6.3 Key, M8, 46L, SAE "B-B", parallel</td> </tr> <tr> <td>T1</td> <td>Ø21.59, 11.2L, 4.0 Key, M14x1.5, taper 1:8</td> </tr> <tr> <td>T2<sup>5)</sup></td> <td>Ø25.0, 12L, 5.0 Key, M16x1.5, taper 1:5</td> </tr> </tbody> </table>	Code	Shaft	D1	13T, 16/32DP, 41.2L, SAE "B" spline	E1	15T, 16/32DP, 46L, SAE "B-B" spline	E4 <sup>4)</sup>	14T, 12/24 DP, 55.6L, SAE "C" spline	M3	Ø25.4, 6.3 Key, M8, 46L, SAE "B-B", parallel	T1	Ø21.59, 11.2L, 4.0 Key, M14x1.5, taper 1:8	T2 <sup>5)</sup>	Ø25.0, 12L, 5.0 Key, M16x1.5, taper 1:5		<table border="1"> <thead> <tr> <th>Code</th> <th>Shaft Seal</th> </tr> </thead> <tbody> <tr> <td>X</td> <td>No seal</td> </tr> <tr> <td>N</td> <td>NBR</td> </tr> <tr> <td>V</td> <td>FPM, FKM</td> </tr> <tr> <td>M</td> <td>Double NBR</td> </tr> <tr> <td>W</td> <td>Double FPM</td> </tr> </tbody> </table>	Code	Shaft Seal	X	No seal	N	NBR	V	FPM, FKM	M	Double NBR	W	Double FPM			
Code	Type																																																																																																																							
P	Pump																																																																																																																							
M	Motor																																																																																																																							
Design																																																																																																																								
Pump and Motor	<b>620</b>																																																																																																																							
Pump	<b>625</b>																																																																																																																							
Code	Unit																																																																																																																							
	Pump	Motor																																																																																																																						
A	Single unit	Standard Motor without checks																																																																																																																						
B	Multiple unit	Standard Motor with two checks																																																																																																																						
C	—	Standard Motor w. one anti cavitation check (ACC)																																																																																																																						
Displacement																																																																																																																								
Code	Design																																																																																																																							
	620 ccm	625 ccm																																																																																																																						
0160	16	—																																																																																																																						
0190	19	—																																																																																																																						
0230	23	—																																																																																																																						
0260	26	—																																																																																																																						
0290	29	—																																																																																																																						
0330	33	—																																																																																																																						
0360	36	36																																																																																																																						
0370	37	—																																																																																																																						
0410	41	41																																																																																																																						
0440	44	—																																																																																																																						
0450	—	45																																																																																																																						
0500	50	50																																																																																																																						
0520	52	—																																																																																																																						
Code	Rotation																																																																																																																							
C	Clockwise																																																																																																																							
A	Counter clockwise																																																																																																																							
B	bi-directional																																																																																																																							
Code	Shaft																																																																																																																							
D1	13T, 16/32DP, 41.2L, SAE "B" spline																																																																																																																							
E1	15T, 16/32DP, 46L, SAE "B-B" spline																																																																																																																							
E4 <sup>4)</sup>	14T, 12/24 DP, 55.6L, SAE "C" spline																																																																																																																							
M3	Ø25.4, 6.3 Key, M8, 46L, SAE "B-B", parallel																																																																																																																							
T1	Ø21.59, 11.2L, 4.0 Key, M14x1.5, taper 1:8																																																																																																																							
T2 <sup>5)</sup>	Ø25.0, 12L, 5.0 Key, M16x1.5, taper 1:5																																																																																																																							
Code	Shaft Seal																																																																																																																							
X	No seal																																																																																																																							
N	NBR																																																																																																																							
V	FPM, FKM																																																																																																																							
M	Double NBR																																																																																																																							
W	Double FPM																																																																																																																							

Not all variances of ordering codes can be offered. Please check available part numbers first.  
For not yet implemented part numbers or special requests please contact Parker Hannifin.

<sup>1)</sup> Only coded for the last section.

<sup>2)</sup> Only for motors



Design	
Pump and Motor	<b>620</b>
Pump	<b>625</b>

Code	Section Connection
S	Separate inlets
C	Common inlets

Code	Drain Position
2 <sup>6)</sup>	Drain on bottom
3 <sup>6)</sup>	Drain on top
4	Rear drain

<sup>6)</sup> Non standard, on request only

Code	Motor Drain Option
B1	no drain
C	9/16-18 UNF thread
G	1/4 BSP thread

Code	Flange
A3	89.8x89.8 - Ø101.6, SAE "B" 4 bolt square
A4	114.5x114.5 - Ø127, SAE "C" 4 bolt square
D7	98.4x128.2 - Ø50.77 rectangular
H2	106.4 - Ø82.55 SAE "A" 2 bolt flange
H3	146.1 - Ø101.6 SAE "B" 2 bolt flange
L3	89.8x89.8 - 101.6 SAE "B" 2/4 bolt flange

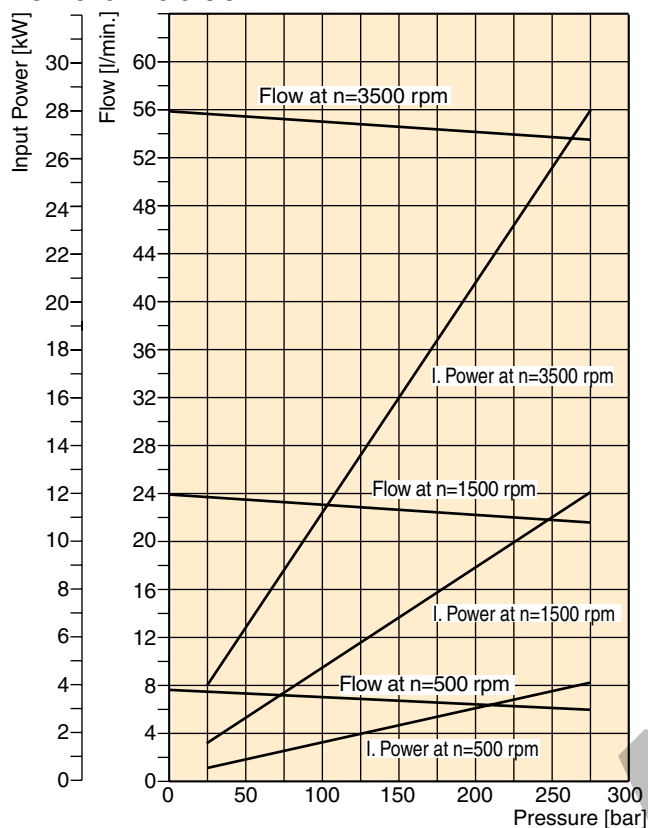
Code	Port Options	Code	Port Options
B1	No ports	S2 <sup>6)</sup> *	3/4"-3/8-16 UNC SAE Split Flange
D3 <sup>6)</sup>	3/4 - 16 UNF thread	S3 <sup>6)</sup> *	1"-3/8-16 UNC SAE Split Flange
D4 <sup>6)</sup>	7/8 - 14 UNF thread	S4 <sup>6)</sup> *	1 1/4"-7/16-14 UNC SAE Split Flange
D5 <sup>6)</sup>	1 1/16 - 12 UN thread	S5 <sup>6)</sup> *	1 1/2"-1/2-13 UNC SAE Split Flange
D6 <sup>6)</sup> *	1 5/16 - 12 UN thread	S6 <sup>6)</sup> *	2"-1/2-13 UNC SAE Split Flange
D7 <sup>6)</sup> *	1 5/8 - 12 UN thread	T2*	19.0 mm - M10 3/4" Metric Split Flange
D8 <sup>6)</sup> *	1 7/8 - 12 UN thread	T3*	25.4 mm - M10 1" Metric Split Flange
E3	1/2 - 14 BSP thread	T4*	31.8 mm - M10 1 1/4" Metric Split Flange
E4	5/8 - 14 BSP thread	T5*	38.1 mm - M12 1 1/2" Metric Split Flange
E5	3/4 - 16 BSP thread	T6*	50.8 mm - M12 2" Metric Split Flange
E6*	1 - 11 BSP thread		
E7*	1 1/4 - 11 BSP thread		
E8*	1 1/2 - 11 BSP thread		
J5*	15 mm - Ø35 mm - M6 square		
J7*	20 mm - Ø40 mm - M6 square		
J8*	18 mm - Ø55 mm - M8 square		
J9*	26 mm - Ø55 mm - M8 square		
L1*	13 mm-Ø30 mm-M6 diamond		
L2*	19 mm-Ø40 mm-M8 diamond		
L3*	27 mm-Ø51 mm-M10 diamond		

<sup>6)</sup> Non standard, on request only

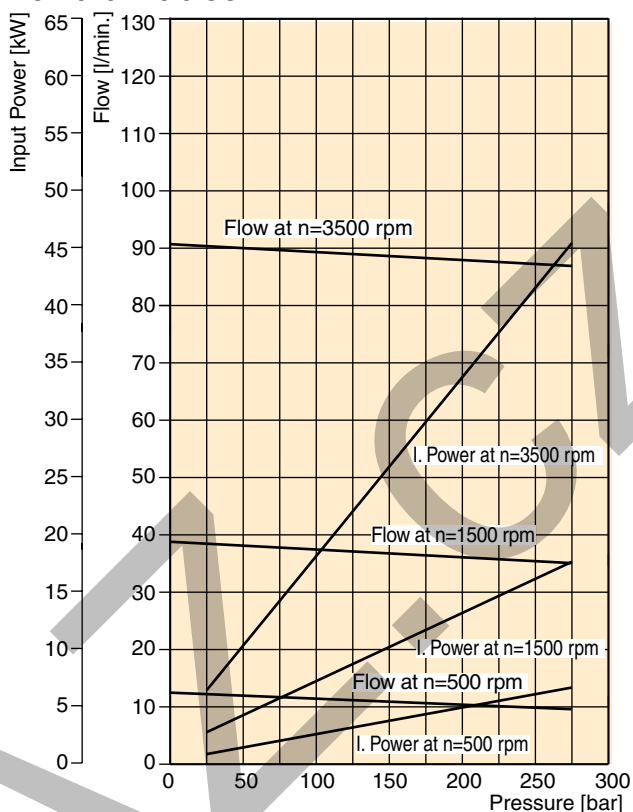
\*) Not usable for rear ports

<sup>3)</sup> For further "B" triple unit repeat displacement, shaft seal between sections, side suction port, side pressure port, rear suction port, rear pressure port.

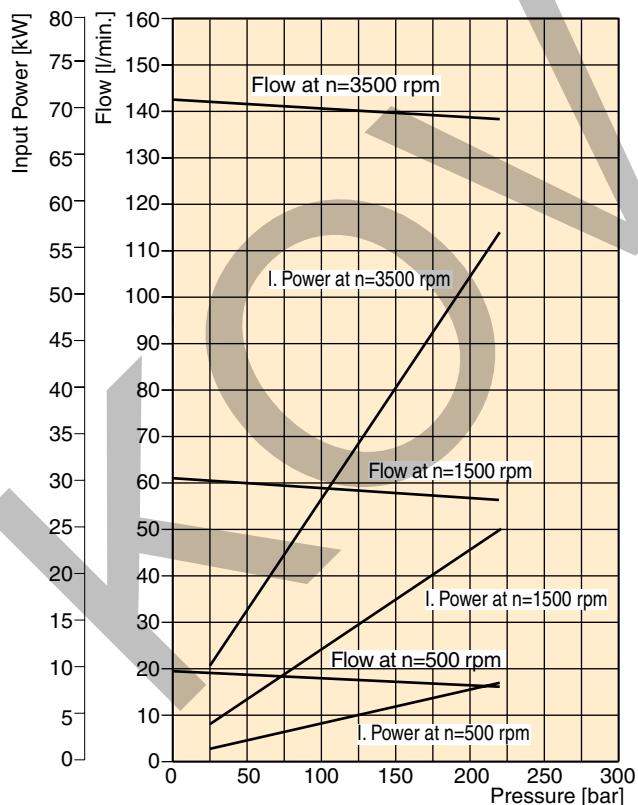
PGP 620 - 16.0 CC



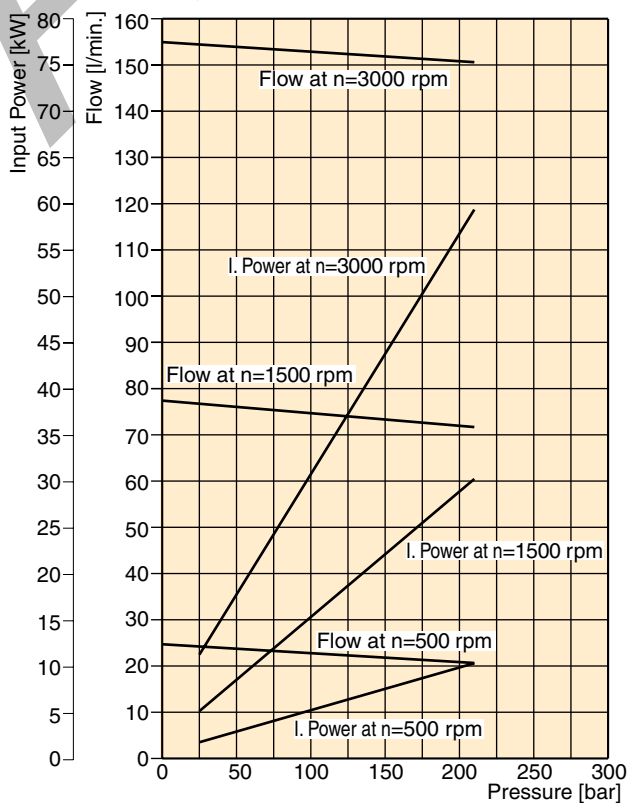
PGP 620 - 26.0 CC



PGP 620 - 41.0 CC



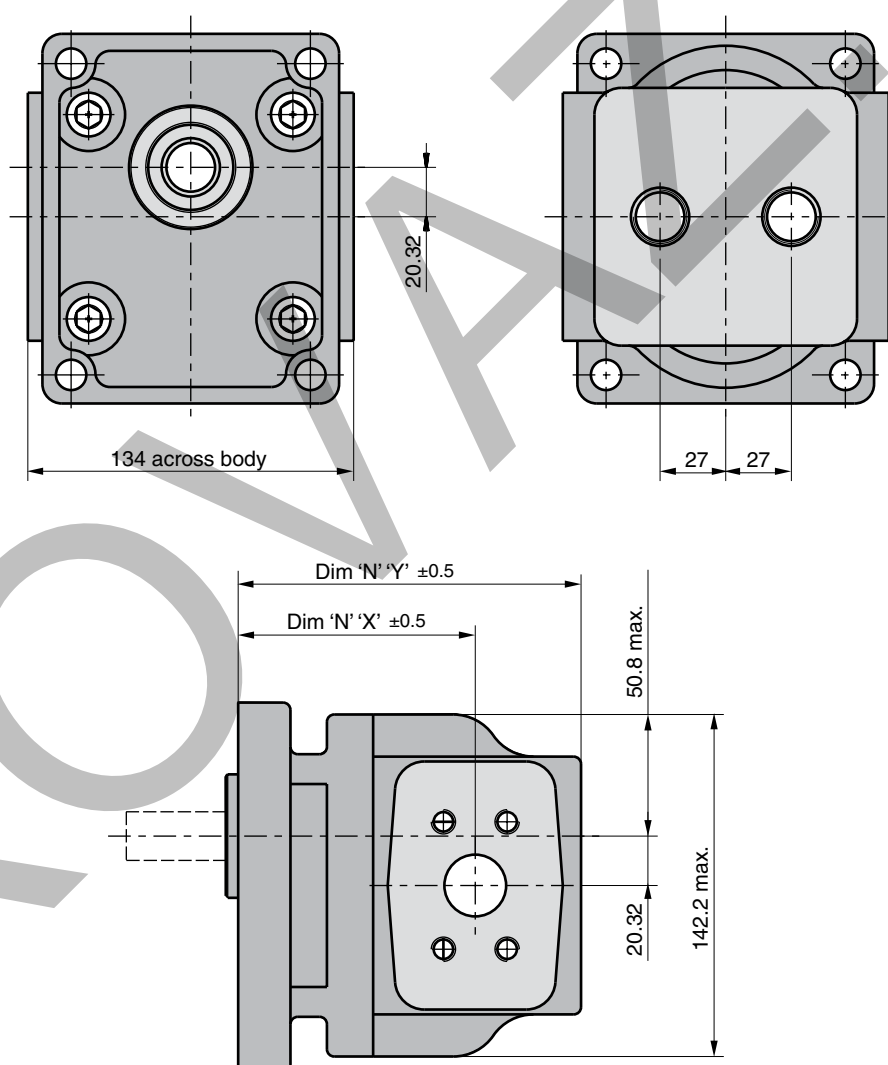
PGP 620 - 52.0 CC



Fluid Temperature =  $45 \pm 2$  °C  
Viscosity =  $36 \text{ mm}^2/\text{s}$   
Inlet Pressure =  $0.9 + 0.1$  bar absolute

## PGP/PGM 620 Specification - Standard Displacements - Single Unit

Pump Displacement	Code	0160	0190	0230	0260	0290	0330	0360	0370	0410	0440	0500	0520
	cm <sup>3</sup> /rev	16.0	19.0	23.0	26.0	29.0	33.0	36.0	37.0	41.0	44.0	50.0	52.0
Max. Continuous Pressure	bar	275	275	275	275	275	275	250	250	220	210	210	210
Minimum Speed @ Max. outlet pressure	rpm	500	500	500	500	500	500	500	500	500	500	500	500
Maximum Speed @ 0 Inlet & Max. outlet pressure	rpm	3500	3500	3500	3500	3500	3500	3500	3500	3500	3500	3000	3000
Dimension "X"	mm	79.2	82.5	86.9	90.2	93.5	97.9	101.2	102.3	106.7	110.0	116.6	118.8
Dimension "Y"	mm	122.7	126.0	130.4	133.7	137.0	141.4	144.7	145.8	150.2	153.5	160.1	162.3
Approx. Weight	kg	12.0	12.1	12.2	12.3	12.6	12.7	12.8	12.9	13.0	13.1	13.3	13.4

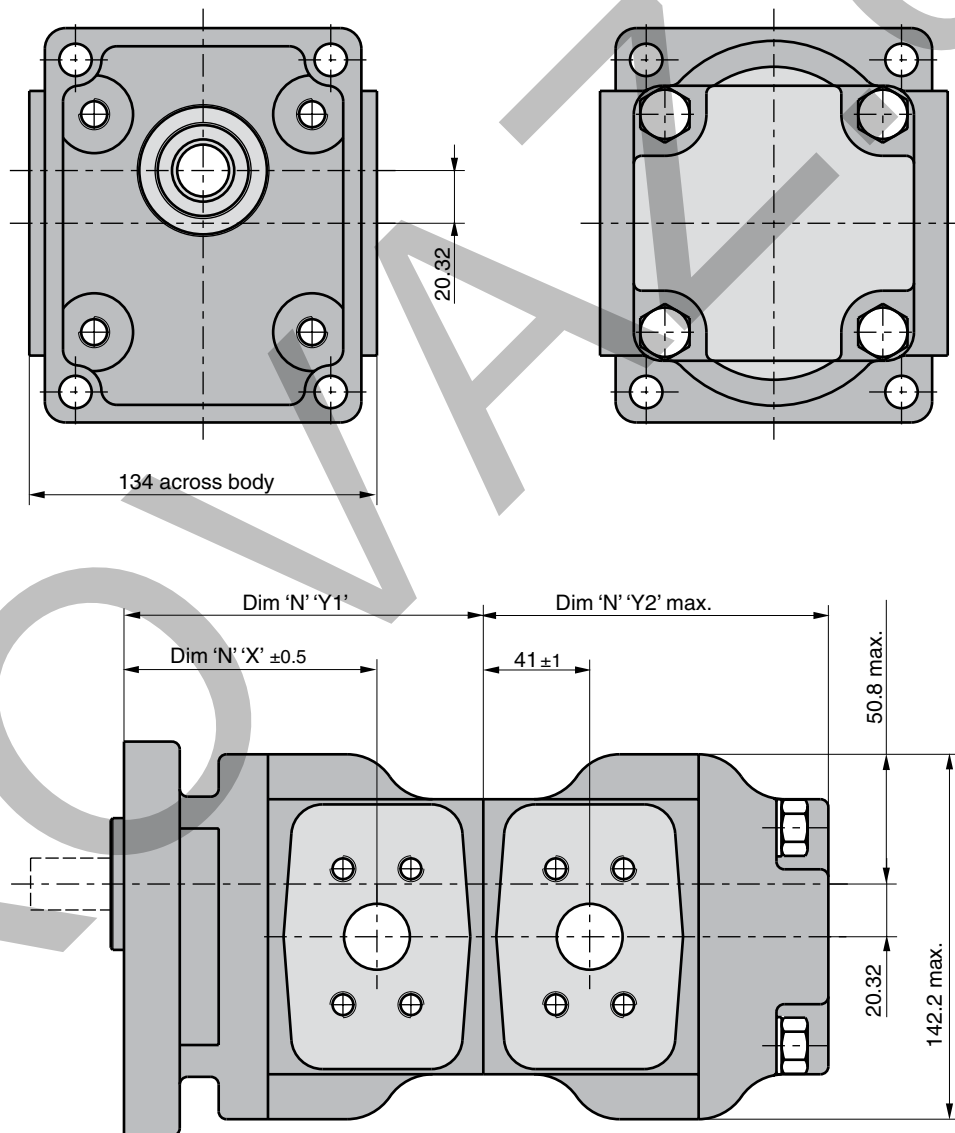


Dimension Flanges see pages 63 to 64

Dimension Shafts see pages 67 to 68

**PGP/PGM 620 Specification - Standard Displacements - Tandem Unit**

Pump Displacement	Code	0160	0190	0230	0260	0290	0330	0360	0370	0410	0440	0500	0520
	cm³/rev	16.0	19.0	23.0	26.0	29.0	33.0	36.0	37.0	41.0	44.0	50.0	52.0
Dimension "X"	mm	79.2	82.5	86.9	90.2	93.5	97.9	101.2	102.3	106.7	110.0	116.6	118.8
Dimension "Y1 "	mm	120.2	123.5	127.9	131.2	134.5	138.9	142.2	143.3	147.7	151.0	157.6	159.8
Dimension "Y2" max.	mm	115.2	118.5	122.9	126.2	129.5	133.9	137.2	138.3	142.7	146.0	152.6	154.8
Approximate Weight (front section)	kg	12.0	12.1	12.2	12.3	12.6	12.7	12.8	12.9	13.0	13.1	13.3	13.4
Approx. Weight (rear section)	kg	10.4	10.5	10.6	10.7	11.0	11.1	11.2	11.3	11.4	11.5	11.7	11.8

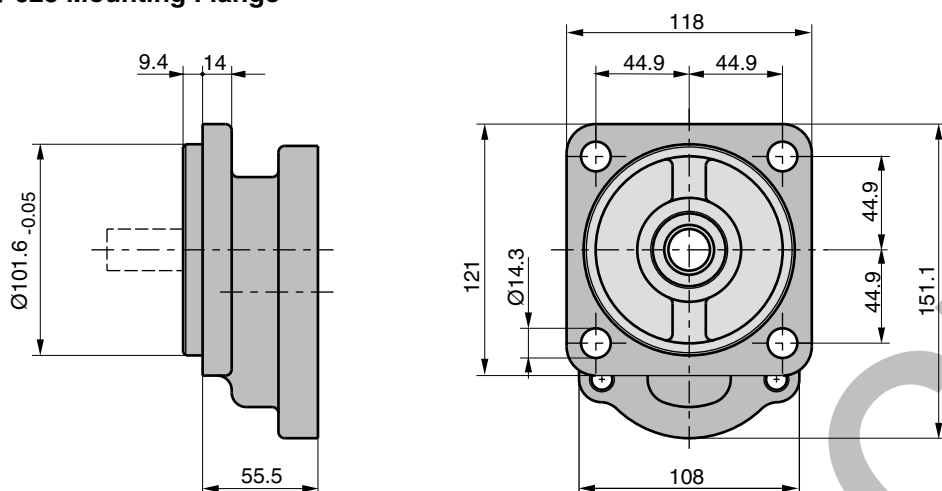


**Dimension Flanges** see pages 63 to 64

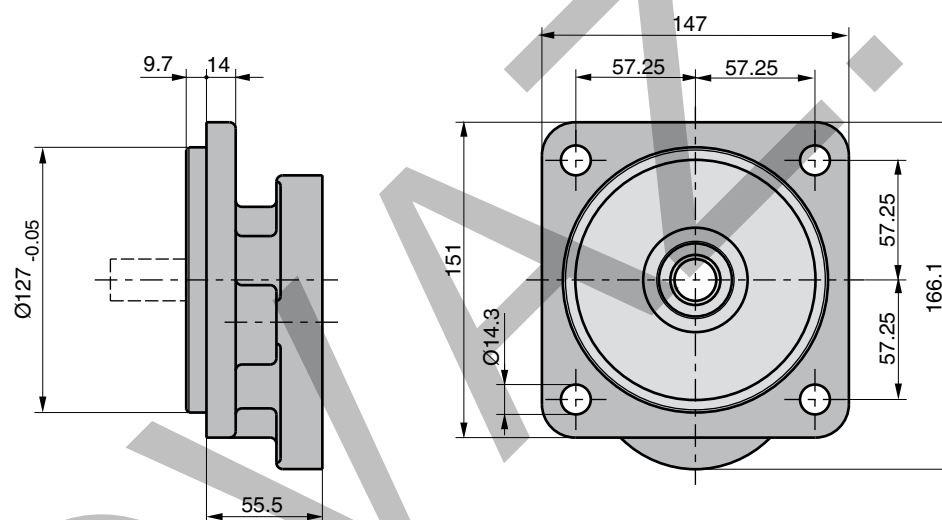
**Dimension Shafts** see pages 67 to 68

**PGP/PGM 620 / 625 Mounting Flange**

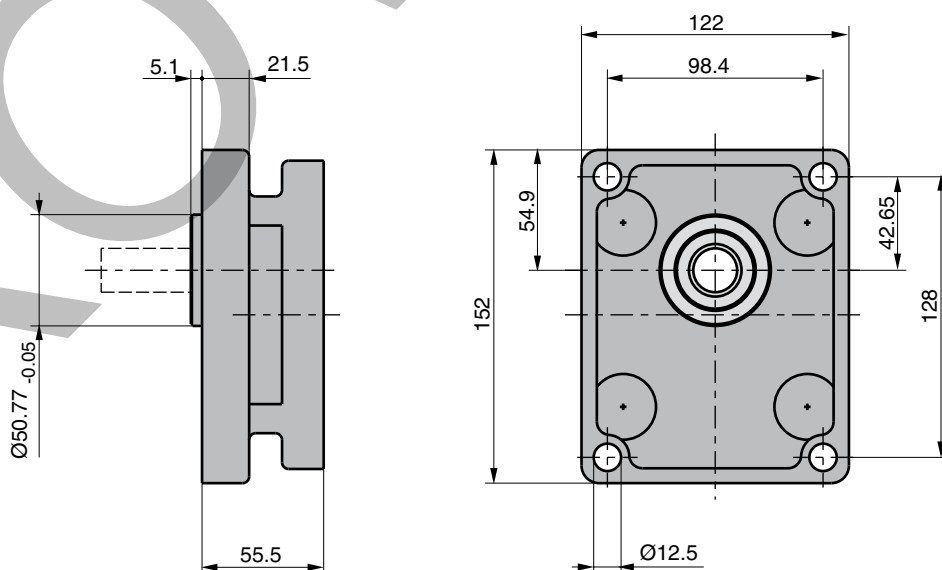
**Code A3**



**Code A4**

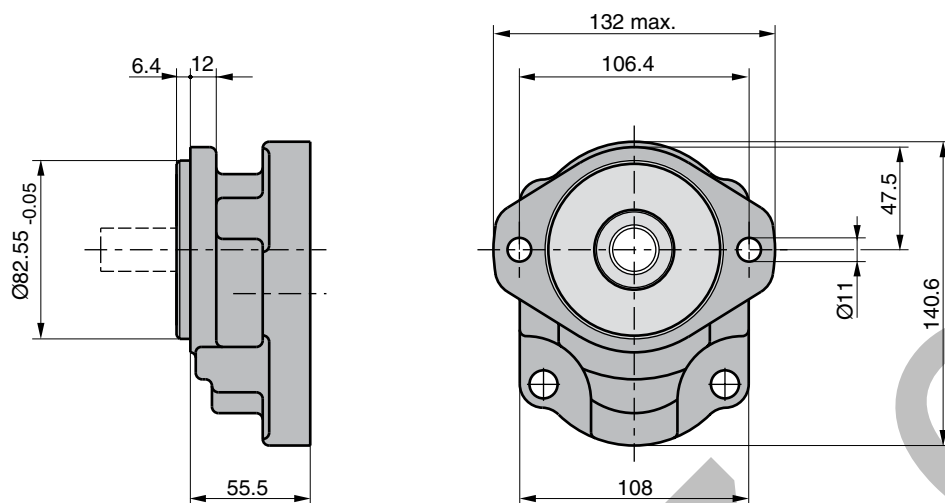


**Code D7**

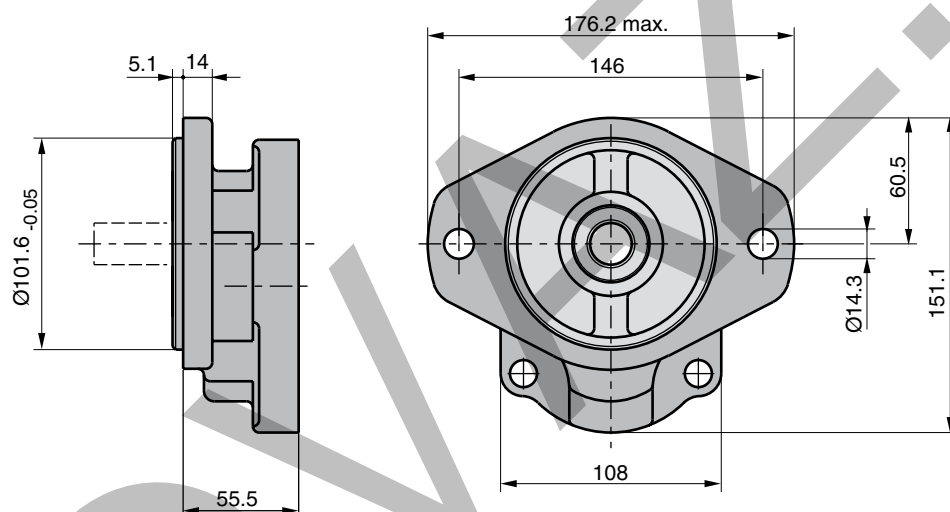


**PGP/PGM 620 / 625 Mounting Flange**

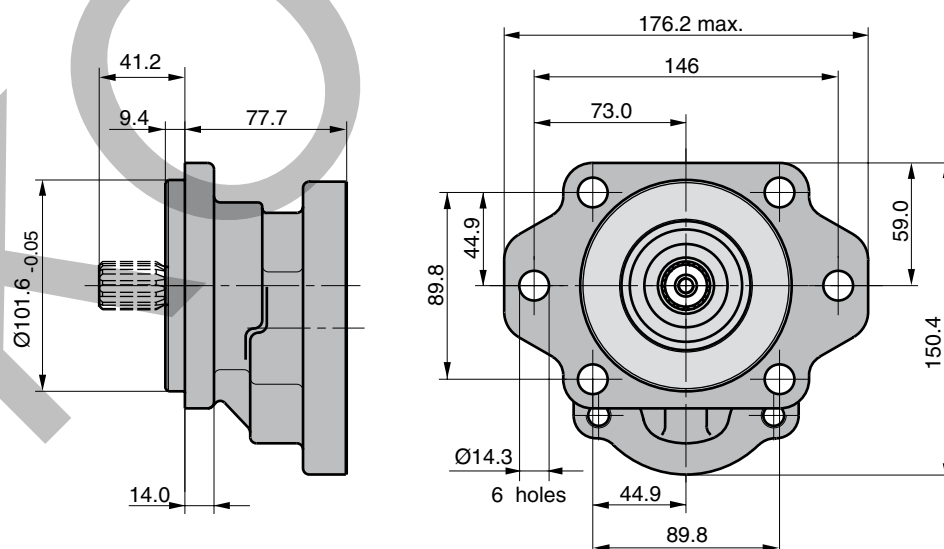
**Code H2**



**Code H3**



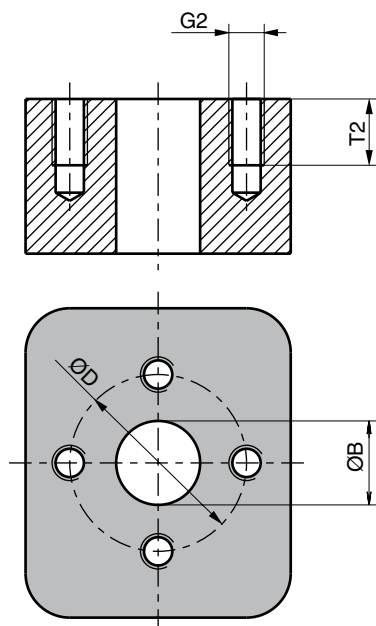
**Code L3**



**PGP/PGM 620 / 625 Porting**

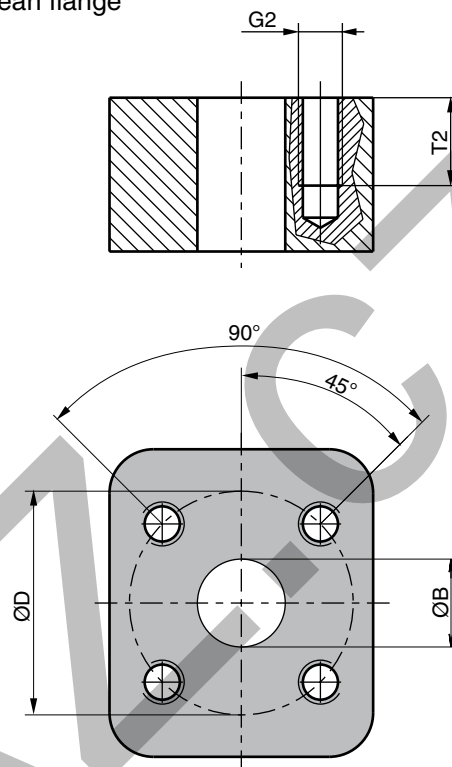
**Code L**

4-Bolt flange



**Code J**

European flange



**PGP/PGM / 625 620**

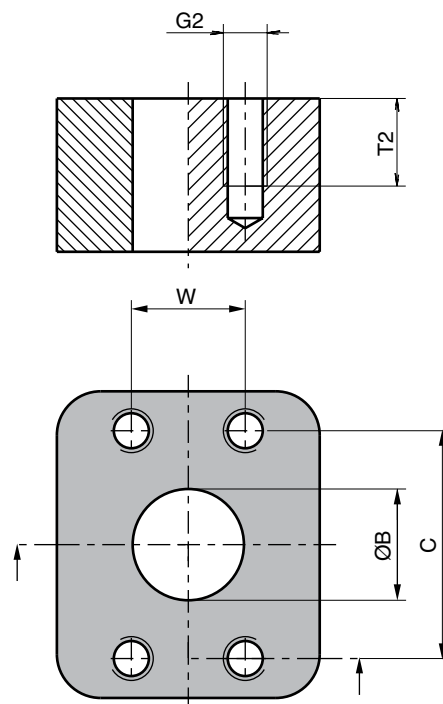
Code	G2	ØB	ØD	C	W	T2
	Thread					
J5	M6	15.0	35.0			12.5
J7	M6	20.0	40.0			13.0
J8	M8	18.0	55.0			15.0
J9	M8	26.0	55.0			15.0
L1	M6	13.0	30.0			13.0
L2	M8	19.0	40.0			15.0
L3	M10	27.0	51.0			18.0
S2	3/8-16 UNC	19.0		47.63	22.23	14.0
S3	3/8-16 UNC	25.4		52.37	26.19	20.6
S4	7/16-14 UNC	31.8		58.72	30.17	20.6
S5	1/2-13 UNC	38.1		69.82	35.71	20.6
S6	1/2-13 UNC	50.8		77.77	42.88	20.6
T2	M10	19.0		47.63	22.23	20.6
T3	M10	25.4		52.37	26.19	21.4
T4	M10	31.8		58.72	30.17	20.6
T5	M12	38.1		69.82	35.71	20.6
T6	M12	50.8		77.77	42.88	20.6

**Code S**

SAE split flange

**Code T**

SAE split flange metric thread

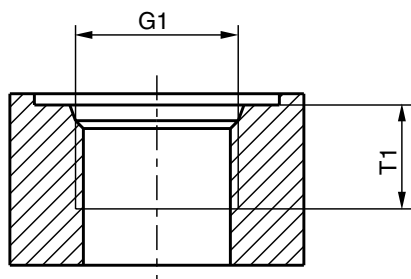




**PGP/PGM 620 / 625 Porting**

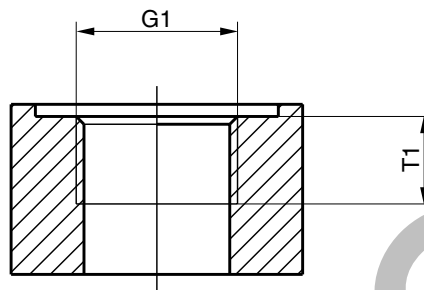
**Code D**

SAE straight thread



**Code E**

BSP - thread

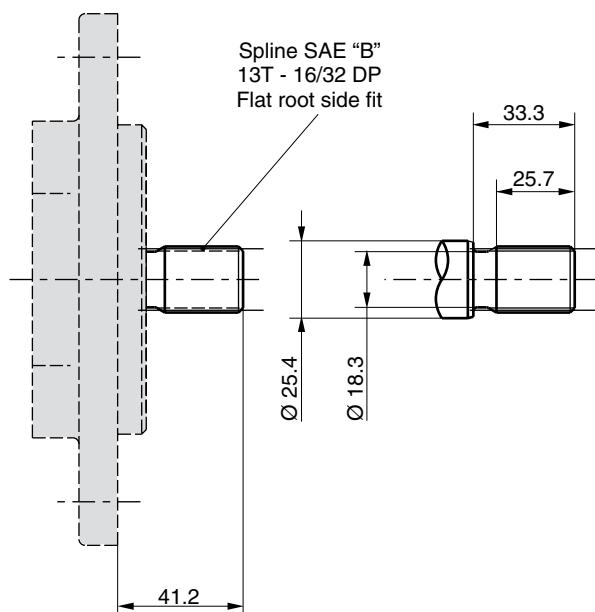


**PGP/PGM 620 / 625**

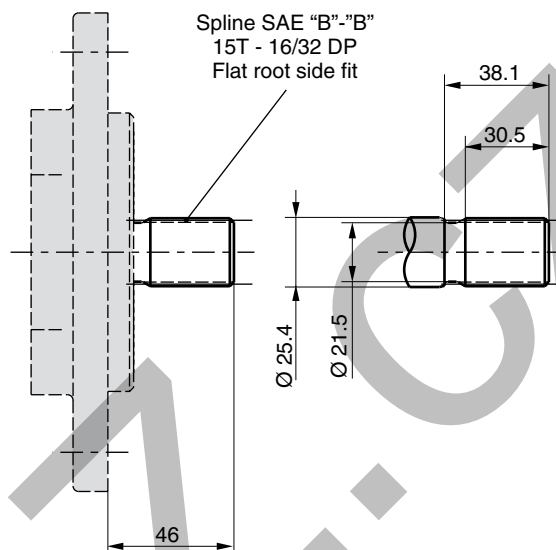
Code	G1	T1
	Thread	Dimensions
D3	3/4-16 UNF	14.3
D4	7/8-14 UNF	16.7
D5	1 1/16-12 UN	19.0
D6	1 5/16-12 UN	19.0
D7	1 5/8-12 UN	19.0
D8	1 7/8-12 UN	19.0
E3	1/2-14 BSP	14.0
E4	5/8-14 BSP	16.3
E5	3/4-16 BSP	16.0
E6	1-11 BSP	18.0
E7	1 1/4-11 BSP	20.0
E8	1 1/2-11 BSP	22.0

**PGP/PGM 620 / 625 Drive Shaft**

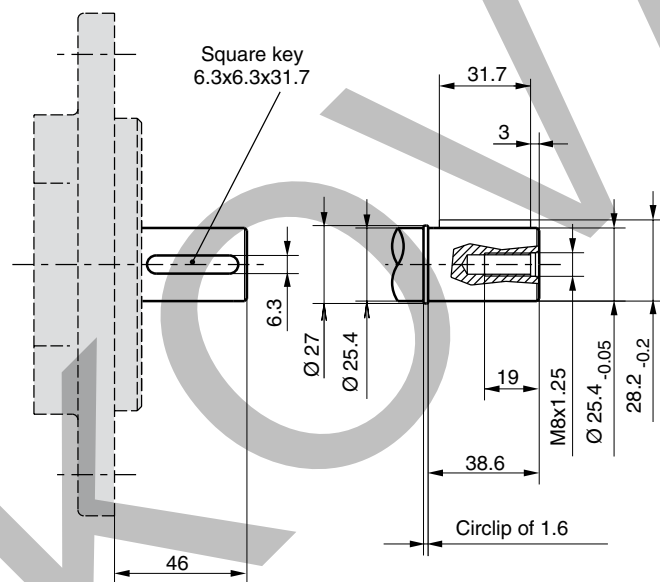
**Code D1**



**Code E1**

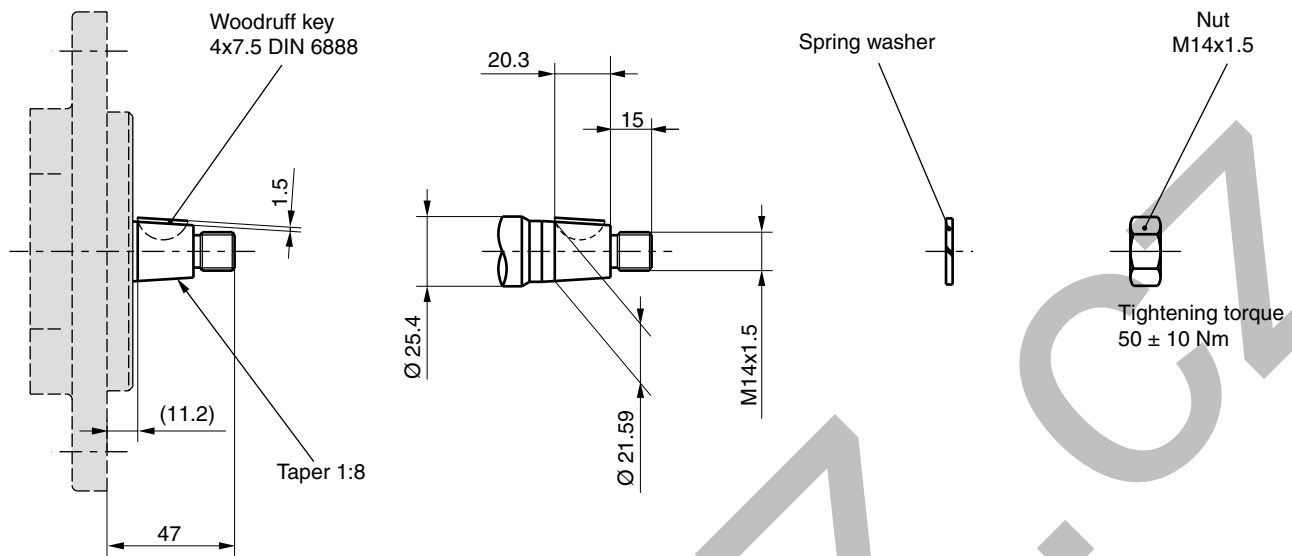


**Code M3**

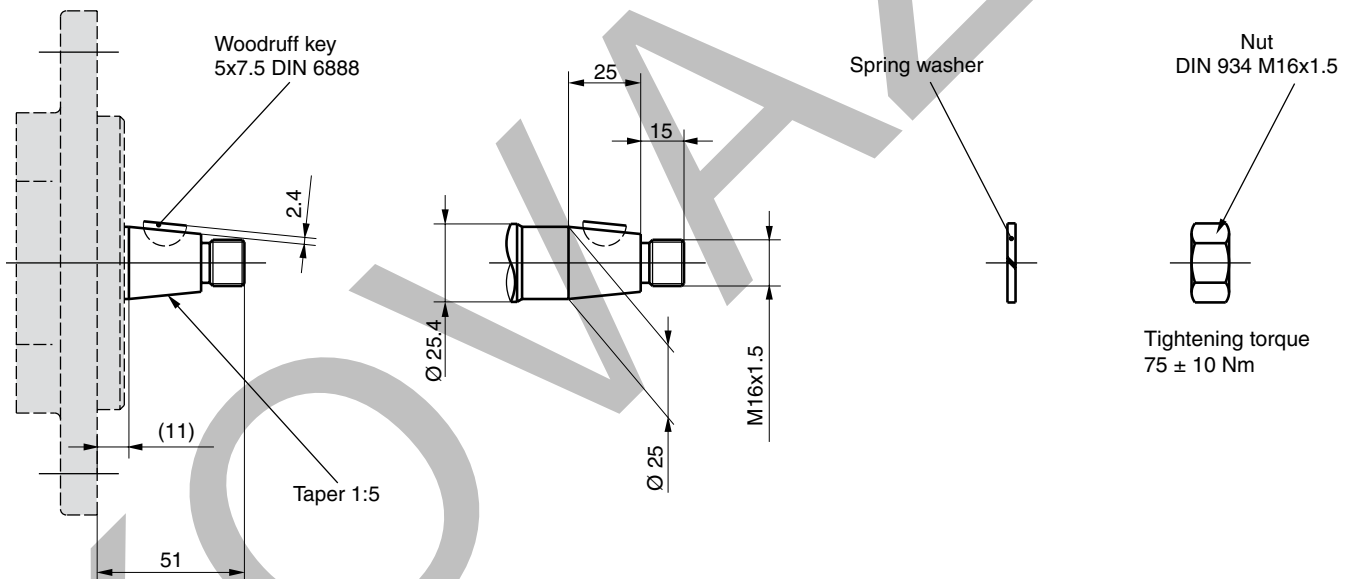


**PGP/PGM 620 / 625 Drive Shaft**

**Code T1**



**Code T2**



**PGP/PGM 620 / 625- Shaft Load Capacity**

Code	Description	Torque Rating [Nm]
D1	13T, 16/32 DP, 41.2L, SAE "B" spline	272
E1	15T, 16/32 DP, 46L, SAE "B-B" spline	460
E4	14T, 12/24 DP, 55.6L, SAE "C" splined	(272)
M3	Ø25.4, 6.3 KEY, M8, 46L, SAE "B-B" parallel	325
T1	Ø21.59, 11.2L, 4.0 KEY, M14x1.5 taper 1:8	218
T2	Ø25.0, 12.0 L, 5.0 KEY, M16x1.5 taper 1:5	301
	Multiple pump connection shaft	228

$$\text{Torque [Nm]} = \frac{\text{Displacement [cm}^3\text{/rev]} \times \text{Pressure [bar]}}{57.2}$$

## PGP 640/620 Specification - Standard Displacements - Tandem Unit

Pump Displ. 640	Code	300	350	400	450	500	550	600	650	700	750	800	900	1000
	cm <sup>3</sup> /rev	30.0	35.0	40.0	45.0	50.0	55.0	60.0	65.0	70.0	75.0	80.0	90.0	100.0
Dimension "X1"	mm	128.6	128.6	131.8	131.8	135.6	135.6	138.4	138.4	142.2	142.2	142.2	149.8	149.8
Dimension "Y1"	mm	176.1	176.1	182.7	182.7	189.3	189.3	195.8	195.8	203.2	203.2	203.2	216.4	216.4
Pump Displ. 620	Code	160	190	210	230	260	290	330	360	370	410	440	500	520
	cm <sup>3</sup> /rev	16.0	19.0	21.0	23.0	26.0	29.0	33.0	36.0	37.0	41.0	44.0	50.0	52.0
Dimension "Y2"	mm	115.2	118.5	120.7	122.9	126.2	129.5	133.9	137.2	138.3	142.7	146	152.6	154.8
Aprox. Weight front section	Kg	20.6	20.6	21.2	21.2	22.0	22.0	22.6	22.6	23.3	23.3	25.0	25.5	25.5
Aprox. Weight rear section	Kg	10.4	10.5	10.5	10.6	10.7	11	11.1	11.2	11.3	11.4	11.5	11.7	11.8

Dimension Flanges see pages 73 to 74

Dimension Shafts see page 77

