

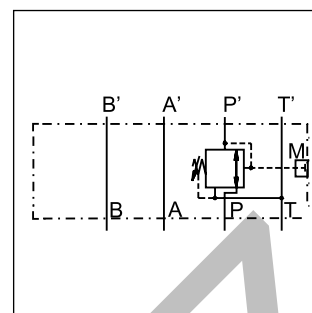
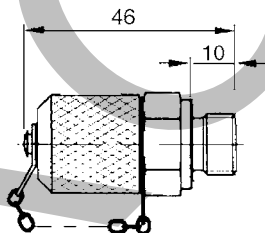
Series PRDM are direct operated pressure reducing valves to regulate pressure in one area of a hydraulic circuit at a predetermined level below normal system pressure. Additionally, an integral pressure relieving function for the secondary reduced pressure circuit is incorporated into the design.

Function

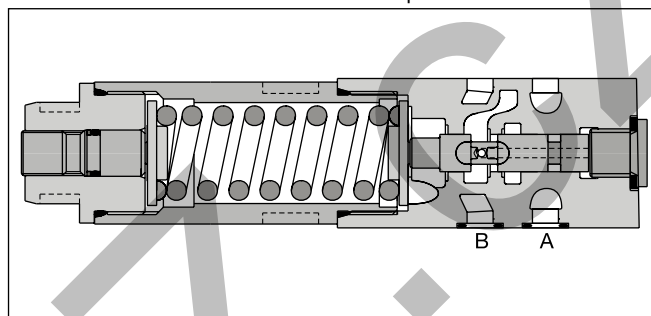
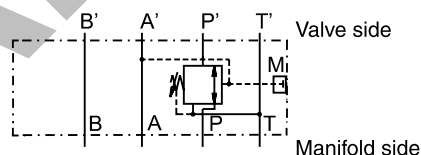
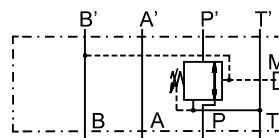
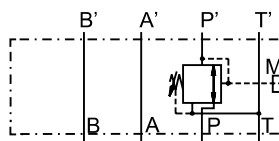
These valves are "normally open" devices that allow fluid to flow through the controlled port during their non-actuated or "at rest" condition. When downstream pressure exceeds the value set by the spring force, the control piston moves off its seat, closing off the flow path and thus reducing the fluid passing through from the main system. The cushioned piston modulates to maintain the preset pressure in this branch of the hydraulic circuit. If, due to external forces, the pressure continues to rise in this branch circuit, the piston will keep moving against the spring force allowing fluid to be drained to the tank, thereby limiting maximum pressure to the valve's setting.

Features

- 3-way design for pressure relieving of the secondary side
- The direct operated, cushioned piston design results in fast response, low leakage and minimal hysteresis.
- Reduced pressure in the 'P', 'A' or 'B' port.
- Pressure settings:
25, 64, 160, 210, 350 bar for PRDM2,
19, 50, 100, 150, 210 bar for PRDM3.
- Gauge port
- PRDM2 - NG06 (CETOP 03)
PRDM3 - NG10 (CETOP 05)

Gauge port option C

Example PP

**Schematics
PRDM*AA****PRDM*BB****PRDM*PP**

Ordering code

PRD	M					V		
Pressure reducing valve, direct operated	Manapak	Size	Port reduction	Pressure range	Adjustment	Seal FPM	Gauge port	Design series (not required for ordering)

Code	Size
2	NG06
3	NG10

Code	Connection
PP	P
AA	A
BB	B

Code	Gauge port
G	G$\frac{1}{4}$
C	Coupling M16

Code	Adjustment
S	Hexagon socket
L	Cylinder lock
K	Turning knob ¹⁾

Pressure range	
Code	PRDM2
02	up to 25 bar
06	up to 64 bar
16	up to 160 bar
21	up to 210 bar
35	up to 350 bar
Code	PRDM3
01	up to 19 bar
05	up to 50 bar
10	up to 100 bar
15	up to 150 bar
21	up to 210 bar

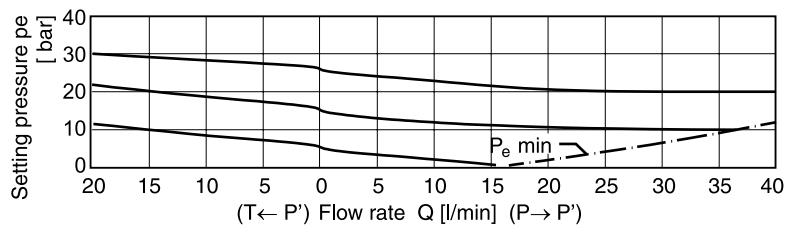
Bold letters =
Short-term availability

Technical data

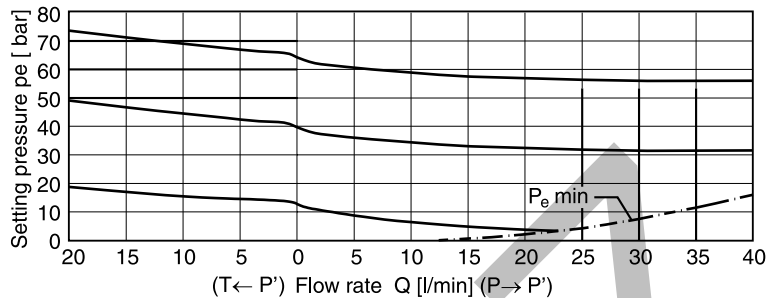
General			
Series		PRDM2	
Size		NG06	
Mounting interface		ISO 4401	
Ambient temperature [°C]		-20...+60	
Weight [kg]		1.3	
MTTF _D value [years]		150	
Hydraulic			
Max. operating pressure P, A, B		350	
T [bar]		50	
Fluid		Hydraulic oil according to DIN 51524	
Fluid temperature [°C]		-20...+70	
Viscosity, permitted		20 ... 400	
recommended [cSt] / [mm²/s]		30 ... 80	
Filtration		ISO 4406 (1999); 18/16/13	

¹⁾ NG06 only.

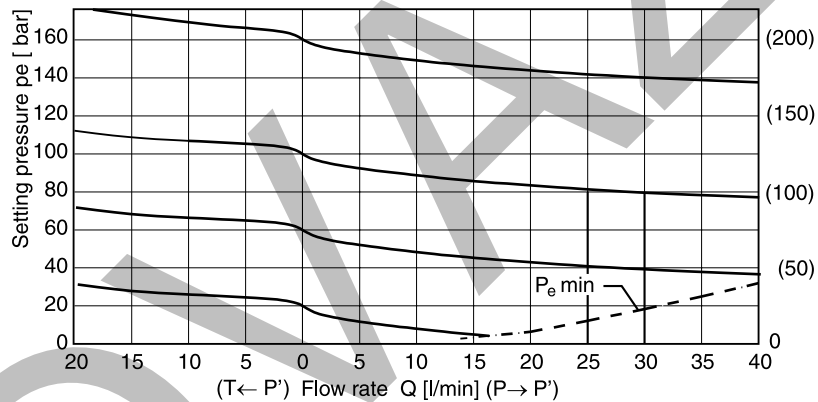
PRDM2 02



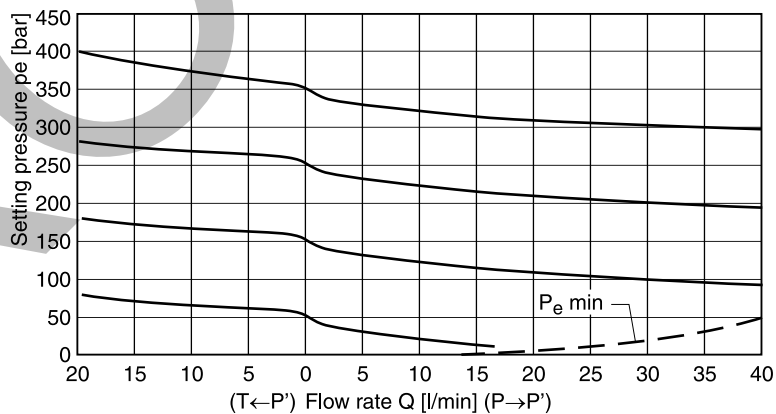
PRDM2 06



PRDM2 16/21

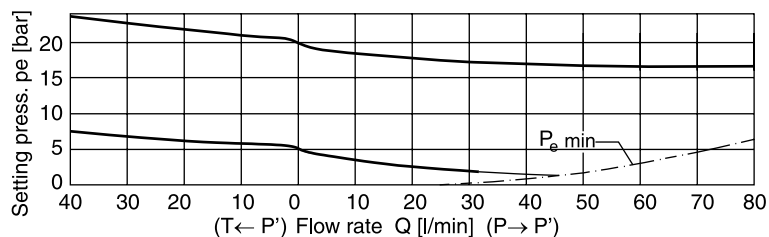


PRDM2 35

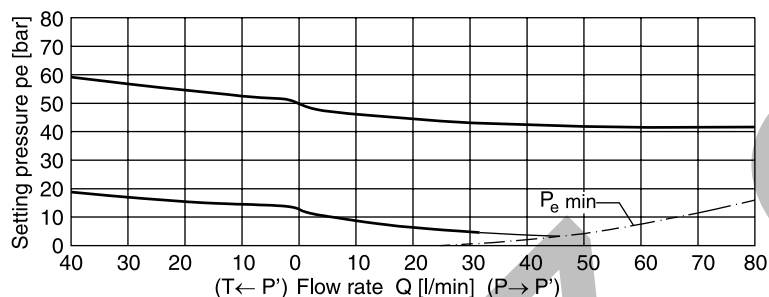


All characteristic curves measured with HLP46 at 50 °C.

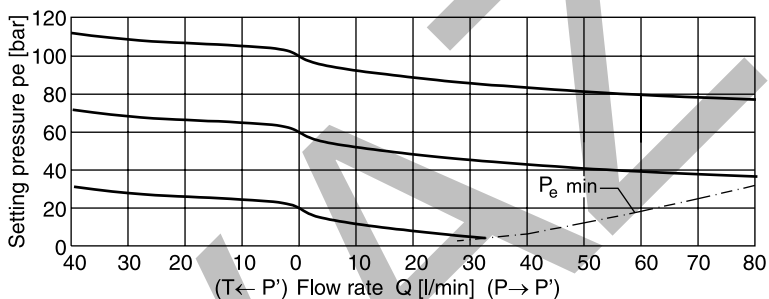
PRDM3 01



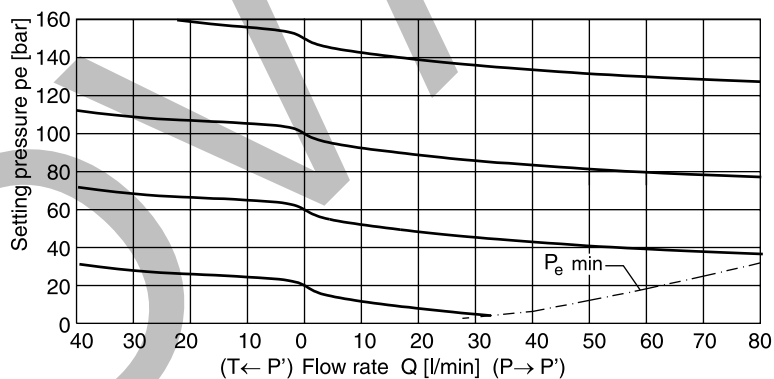
PRDM3 05



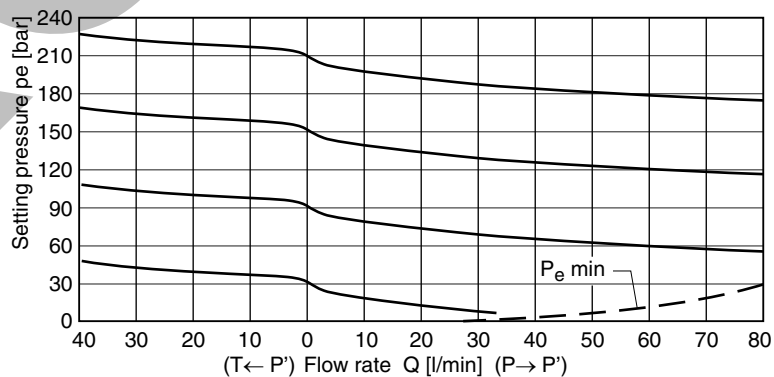
PRDM3 10



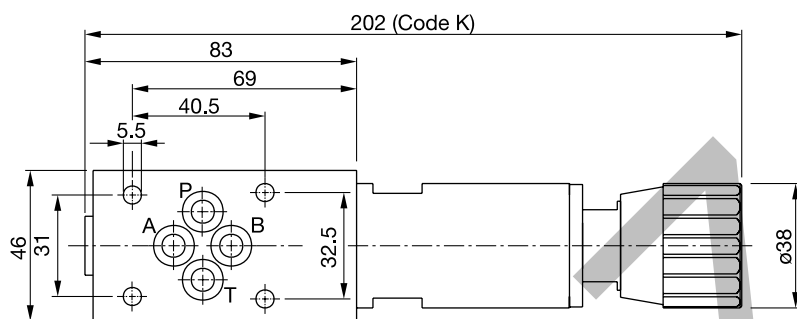
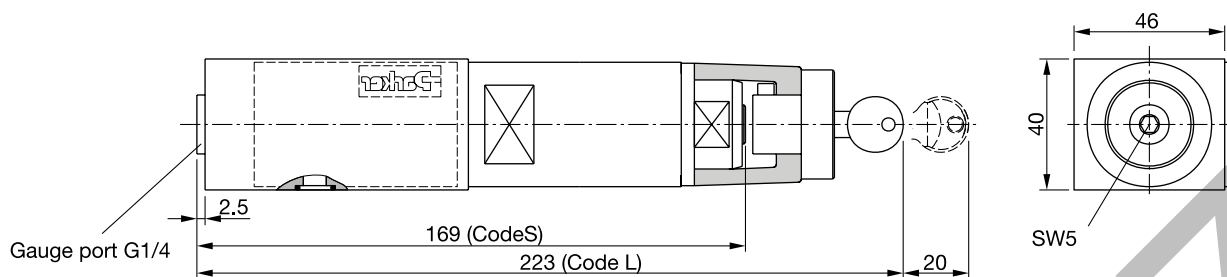
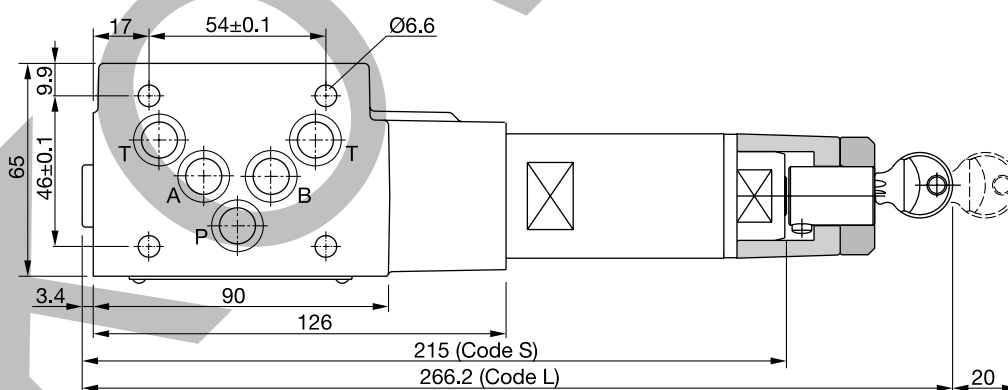
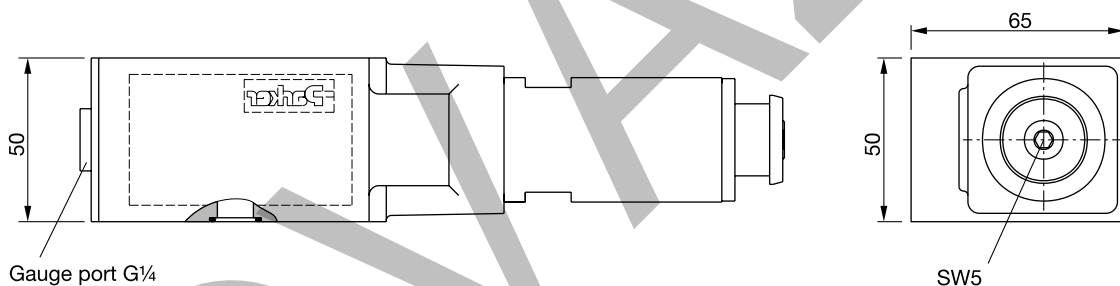
PRDM3 15



PRDM3 21



All characteristic curves measured with HLP46 at 50 °C.

PRDM2**PRDM3**

Seal kit order code		
Seal	PRDM2	PRDM3
V	SK-PRDM2-V	SK-PRDM3-V

