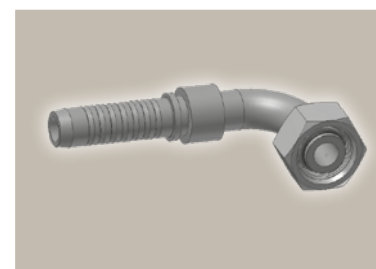
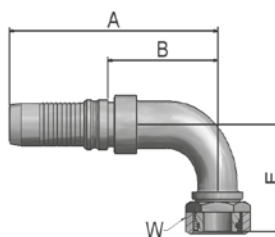


**CF**

**Female Metric 24°  
Light Series with O-Ring  
Swivel – 90° Elbow**

ISO 12151-2-SWE-L – DKOL 90°



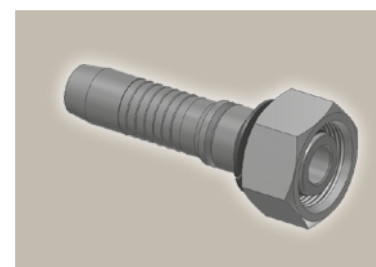
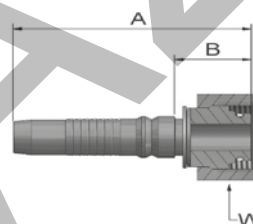
| Part Number | Hose I.D. |       |      |      | Thread<br>metric | Tube<br>O.D.<br>mm | A<br>mm | B<br>mm | E<br>mm | W<br>mm |
|-------------|-----------|-------|------|------|------------------|--------------------|---------|---------|---------|---------|
|             | DN        | Inch  | Size | mm   |                  |                    |         |         |         |         |
| KCFV4-22-16 | 25        | 1     | -16  | 25.4 | M30x2            | 22                 | 150     | 77      | 70      | 36      |
| KCFV4-35-20 | 31        | 1 1/4 | -20  | 31.8 | M45x2            | 35                 | 186     | 98      | 79      | 50      |
| KCFV6-35-20 | 31        | 1 1/4 | -20  | 31.8 | M45x2            | 35                 | 177     | 86      | 79      | 50      |
| KCFV6-42-24 | 38        | 1 1/2 | -24  | 38.1 | M52x2            | 42                 | 209     | 113     | 101     | 60      |

Fittings with standard O-ring seals can be used for temperatures from -40 °C up to +105 °C.  
O-rings see section Eb. Special O-rings are available on request.

**C9**

**Female Metric 24° – Swivel  
Heavy Series with O-Ring  
Straight**

ISO 12151-2-SWS-S – DKOS



| Part Number | Hose I.D. |       |      |      | Thread<br>metric | Tube<br>O.D.<br>mm | A<br>mm | B<br>mm | W<br>mm |
|-------------|-----------|-------|------|------|------------------|--------------------|---------|---------|---------|
|             | DN        | Inch  | Size | mm   |                  |                    |         |         |         |
| KC9V4-20-10 | 16        | 5/8   | -10  | 15.9 | M30x2            | 20                 | 87      | 27      | 36      |
| KC9V4-20-12 | 19        | 3/4   | -12  | 19.1 | M30x2            | 20                 | 88      | 26      | 36      |
| KC9V4-25-12 | 19        | 3/4   | -12  | 19.1 | M36x2            | 25                 | 91      | 30.3    | 46      |
| KC9V4-30-12 | 19        | 3/4   | -12  | 19.1 | M42x2            | 30                 | 95      | 33      | 50      |
| KC9V4-25-16 | 25        | 1     | -16  | 25.4 | M36x2            | 25                 | 103     | 30      | 46      |
| KC9V4-30-16 | 25        | 1     | -16  | 25.4 | M42x2            | 30                 | 108     | 35      | 50      |
| KC9V4-38-16 | 25        | 1     | -16  | 25.4 | M52x2            | 38                 | 110     | 37      | 60      |
| KC9V4-30-20 | 31        | 1 1/4 | -20  | 31.8 | M42x2            | 30                 | 123     | 35      | 50      |
| KC9V4-38-20 | 31        | 1 1/4 | -20  | 31.8 | M52x2            | 38                 | 126     | 38      | 60      |
| KC9V6-30-20 | 31        | 1 1/4 | -20  | 31.8 | M42x2            | 30                 | 131.5   | 41.5    | 50      |
| KC9V6-38-20 | 31        | 1 1/4 | -20  | 31.8 | M52x2            | 38                 | 135     | 44      | 60      |
| KC9V4-38-24 | 38        | 1 1/2 | -24  | 38.1 | M52x2            | 38                 | 129     | 36      | 60      |
| KC9V6-38-24 | 38        | 1 1/2 | -24  | 38.1 | M52x2            | 38                 | 139     | 43      | 60      |
| KC9V6-54-32 | 51        | 2     | -32  | 50.8 | M68x2            | 54                 | 175     | 65      | 80      |

Fittings with standard O-ring seals can be used for temperatures from -40 °C up to +105 °C.  
O-rings see section Eb. Special O-rings are available on request.

Approved **fitting series** for hose types, depending on size:

Also available in stainless steel. Details can be found in CAT 4400.1/UK

|           |     |       |        |        |       |       |       |       |        |         |     |       |       |      |
|-----------|-----|-------|--------|--------|-------|-------|-------|-------|--------|---------|-----|-------|-------|------|
| <b>V4</b> | H31 | H31TC | H31ST  | R42    | R42TC | R42ST | R35   | R35TC | RS35TC | R50TC   | H29 | H29TC | H29ST | FA35 |
| <b>V6</b> | R35 | R35TC | RD35TC | RS35TC | R42   | R42ST | R42TC | R50TC | FA35   | CEM69TC |     |       |       |      |