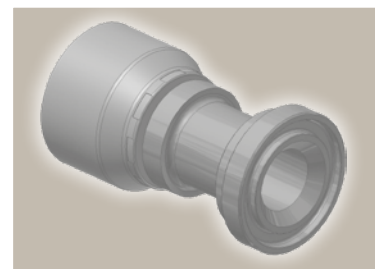
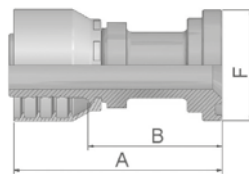


15

ISO 6162-1-Flange Straight

ISO 12151-3-S-L – SFL
(21.0 MPa/ 3000 psi)







| Part Number | | Hose I.D. | | | | Flange | A | B | F |
|-------------|-------------|-----------|-------|------|------|--------|-----|----|----|
| 46 series | 48 series | DN | Inch | Size | mm | Inch | mm | mm | mm |
| 11546-8-8 | 11548-8-8 | 12 | 1/2 | -8 | 12.7 | 1/2 | 74 | 50 | 30 |
| 11546-12-8 | 11548-12-8 | 12 | 1/2 | -8 | 12.7 | 3/4 | 51 | 27 | 38 |
| 11546-12-10 | 11548-12-10 | 16 | 5/8 | -10 | 15.9 | 3/4 | 55 | 30 | 38 |
| 11546-12-12 | 11548-12-12 | 19 | 3/4 | -12 | 19.1 | 3/4 | 81 | 55 | 38 |
| 11546-16-12 | 11548-16-12 | 19 | 3/4 | -12 | 19.1 | 1 | 56 | 30 | 45 |
| 11546-20-12 | 11548-20-12 | 19 | 3/4 | -12 | 19.1 | 1 1/4 | 62 | 36 | 51 |
| 11546-16-16 | 11548-16-16 | 25 | 1 | -16 | 25.4 | 1 | 84 | 54 | 45 |
| 11546-20-16 | 11548-20-16 | 25 | 1 | -16 | 25.4 | 1 1/4 | 65 | 35 | 51 |
| 11546-24-16 | 11548-24-16 | 25 | 1 | -16 | 25.4 | 1 1/2 | 68 | 38 | 60 |
| | 11548-16-20 | 31 | 1 1/4 | -20 | 31.8 | 1 | 111 | 64 | 45 |
| 11546-20-20 | | 31 | 1 1/4 | -20 | 31.8 | 1 1/4 | 114 | 76 | 51 |
| | 11548-20-20 | 31 | 1 1/4 | -20 | 31.8 | 1 1/4 | 119 | 72 | 51 |
| 11546-24-20 | | 31 | 1 1/4 | -20 | 31.8 | 1 1/2 | 72 | 35 | 60 |
| | 11548-24-20 | 31 | 1 1/4 | -20 | 31.8 | 1 1/2 | 82 | 35 | 60 |
| | 11548-32-20 | 31 | 1 1/4 | -20 | 31.8 | 2 | 123 | 76 | 71 |
| | 11548-24-24 | 38 | 1 1/2 | -24 | 38.1 | 1 1/2 | 117 | 79 | 60 |
| | 11548-32-24 | 38 | 1 1/2 | -24 | 38.1 | 2 | 80 | 42 | 71 |
| | 11548-24-32 | 51 | 2 | -32 | 50.8 | 1 1/2 | 129 | 81 | 60 |
| | 11548-32-32 | 51 | 2 | -32 | 50.8 | 2 | 127 | 79 | 71 |

To select corresponding half-flange and O-ring see section Eb.

Approved **fitting series** for hose types, depending on size:

Also available in stainless steel. Details can be found in CAT 4400.1/UK

| | | | | | | | | | | | | | | | | | |
|--|-------|--|-------|-------|-------|---------|-------|-------|------------|-----|-------|-------|------------|-------|-------|-----|-----|
|  46 | or |  48 | 441 | 461LT | 462 | 462TC | 462ST | 629PU | 692PU Twin | | | | | | | | |
|  46 | 463 | 492 | 492ST | 492TC | 692 | 692Twin | 692TC | BCH1 | | | | | | | | | |
|  48 | 301SN | 304 | 387 | 387ST | 387TC | 421RH | 421SN | 426 | 421TC | 436 | 441RH | 462PU | 462PU Twin | BCH2 | HT2 | ... | |
| | 471TC | 477 | 477ST | 477TC | 477RH | 487 | 487ST | 487TC | 493 | 787 | 787TC | 787ST | 797 | 797TC | 797ST | 811 | 881 |