

## LD Shut-off valve PN 40

### EO 24° cone end / EO 24° cone end

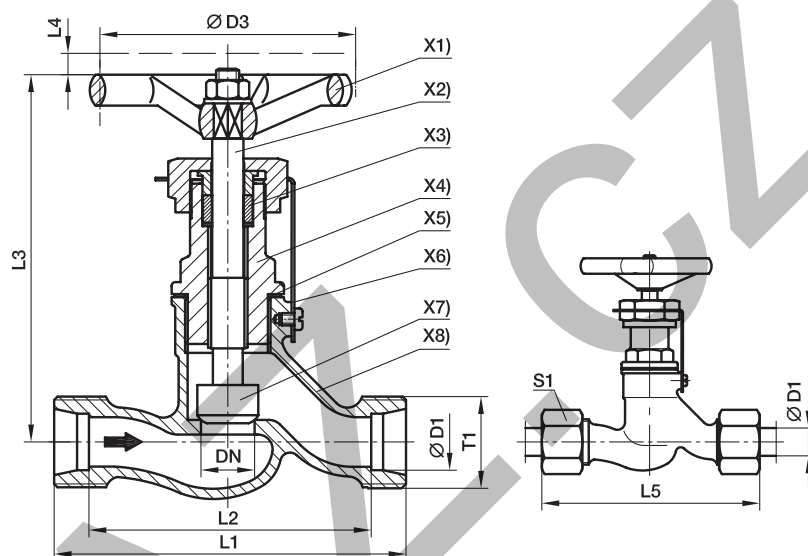
(with internal threaded spindle)

For hydraulic oil, mineral, oil, fuel oil, Diesel, water\* etc. Temperature up to 150°C. For steam up to 10 bar.  
For compressed air up to 35 bar on request. CS DIN 86501 Rg.-N.

The pressure specification PN for hand-operated shut-off valves applies to the design factor 1,5 (according DIN 3230 T5 and ISO 5208).

#### Caution!

Please note the admissible pressure ratings for the EO-tube ends.



#### EO-tube connection:

for **copper** tubes nuts, cutting and locking rings of brass

#### Attention:

for **steel** tubes: nuts, progressive rings of steel  
**specify when ordering**

We recommend pre-installation in hardened pre-installation body (see assembly instructions)

- X1) **Hand wheel:** Plastic material typ 74 according to DIN 388 Form C  
X2) **Spindle:** with internal thread. Material: Cu Zn 35 Ni 2  
X3) **Stuffing box packing:** Graphite  
X4) **Head piece:** material: Cu Zn 39 Pb 3  
X5) **Sealing:** Copper ring  
X6) **Locking plates:** material: St. 37/zinc plated  
X7) **Valve cone:** loose tip material: Cu Zn 35 Ni 2  
X8) **Casing:** material: G-Cu Sn 5Zn Pb (Rg 5 according to DIN 1705)

Series	D1	T1	DN	D3	L1	L2	L3	L4	L5	S1	Weight g/1 piece	Order code*	PN (bar) <sup>1)</sup> without surface
S <sup>4)</sup>	10	M 18×1.5	6	63	60	45	98	7	77	22	383	<b>LD10SX</b>	40
	12	M 20×1.5	8	63	64	49	98	7	81	24	401	<b>LD12SX</b>	40
	14	M 22×1.5	10	63	70	54	98	7	89	27	417	<b>LD14SX</b>	40
	16	M 24×1.5	12	80	84	67	110	9	103	30	631	<b>LD16SX</b>	40
	20	M 30×2.0	16	80	90	69	110	9	112	36	688	<b>LD20SX</b>	40
	25	M 36×2.0	20	100	110	86	129	12	134	46	1191	<b>LD25SX</b>	40
	30	M 42×2.0	25	100	120	93	129	12	146	50	1322	<b>LD30SX</b>	40
	38	M 52×2.0	32	100	140	108	158	12	169	60	2268	<b>LD38SX</b>	40

<sup>1)</sup> Pressure shown = item deliverable

<sup>4)</sup> S = heavy series

$\frac{\text{PN (bar)}}{10} = \text{PN (MPa)}$

**Delivery without nut and ring. Information on ordering complete fittings or alternative sealing materials see page I7.**

\*Please add the **suffixes**  
below according to the material/  
surface required.

Order code suffixes			
Material	Suffix surface and material	Example	Standard sealing material (no additional suffix needed)
Gunmetal (Rg 5) 2.1096	without	LD10SX	Graphit / Metal