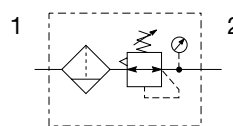


Mini Filter / Regulator - P31

Symbols



- Integral 1/4" ports (NPT & BSPP)
- High efficiency 5 micron element as standard
- Excellent water removal efficiency
- Robust but lightweight aluminum construction
- Positive bayonet latch to ensure correct & safe fitting
- Secondary pressure ranges 0-2 bar (0-30 psig), 0-4 bar, (0-60 psig), 0-8 bar (0-125 psig), 0-16 bar (0-232 psig)
- Secondary aspiration plus balanced poppet provides quick response and accurate pressure regulation

Options:

P31EB			2	E				N		P
Basic series		Thread type		Element		Relief		Mounting		
Global modular mini filter / regulator		BSPP 1 NPT 9		5µ Element E		B Relieving N Non-relieving		P Plastic panel mount nut		
P31EB										
		Port size				Drain type				
		1/4 2				B Pulse drain M Manual drain				
				Bowl type						
				Poly bowl with bowl guard G Metal bowl without sight gauge M						
						Adjustment range				
						With square gauge		With round gauge		
						psig bar		Z 2 bar; 30 psig; 0.2 MPa		
						1 = 30* V = 2*		M 4 bar; 60 psig; 0.4 MPa		
						3 = 60 S = 4		G 8 bar; 125 psig; 0.8 MPa		
						5 = 125 T = 8		J§ 16 bar; 232 psig; 1.6 MPa		
								Without gauge		
								Y 2 bar; 30 psig; 0.2 MPa		
								L 4 bar; 60 psig; 0.4 MPa		
								N 8 bar; 125 psig; 0.8 MPa		
								H§ 16 bar; 232 psig; 1.6 MPa		

* Unit comes with 0-4 bar or 0-60 psig gauge respectively.

§ Not available with poly bowl with bowl guard.

Bar gauges fitted to BSPP

PSI gauges fitted to NPT

Bold items are most common.

Specifications

Flow capacity*	1/4	10 dm³/s (22 scfm)
Operating temperature†	Plastic bowl	-10°C to 52°C (14°F to 125°F)
	Metal bowl	-10°C to 65.5°C (14°F to 150°F)
Max. supply pressure	Plastic bowl	10 bar (150 psig)
	Metal bowl	17 bar (250 psig)
Standard filtration		5 micron
Useful retention		12 cm³ (0.4 US oz.)
Adjusting range pressure		0-2 bar (30 psig) 0-4 bar (60 psig) 0-8 bar (125 psig) 0-16 bar (232 psig)
Port size	BSPP / NPT	1/4
Gauge port (2 ea.)**	BSPP / NPT	1/8
Weight		0.19 kg (0.42 lbs)

* Inlet pressure 10 bar (145 psig). Secondary pressure 6.3 bar (91.3 psig).

** Non-gauge option only.

† Units with square gauges: -15°C to 65.5°C (5°F to 150°F)

Air quality:

Within ISO 8573-1: 1991 Class 3 (Particulates)

Within ISO 8573-1: 2001 Class 6 (Particulates)

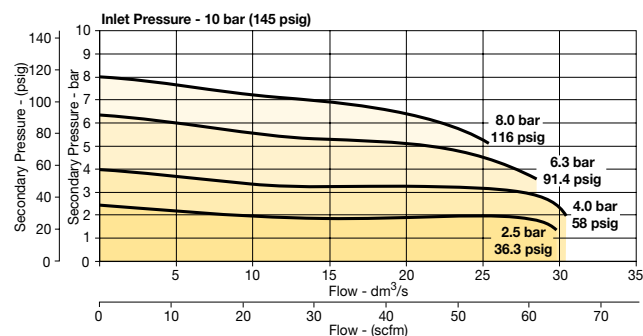


WARNING

**Product rupture can cause serious injury.
Do not connect regulator to bottled gas.
Do not exceed Maximum primary pressure rating.**

Flow Charts

1/4 Filter / Regulator

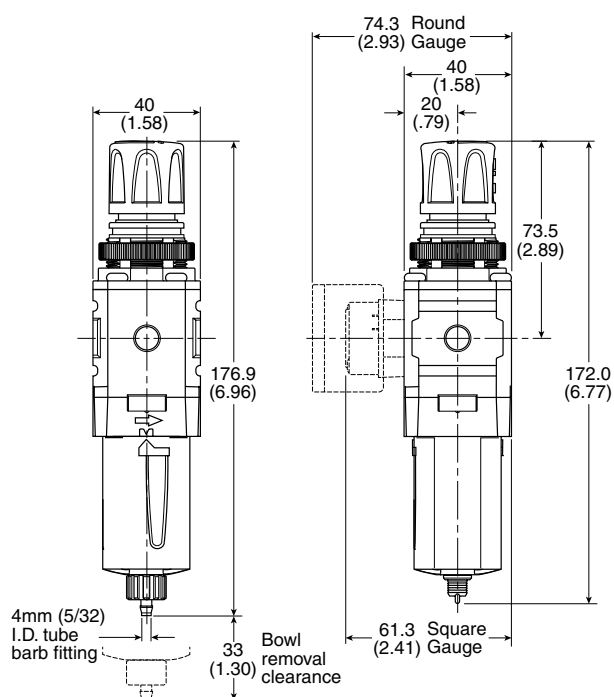


Material Specifications

Body	Aluminum	
Adjustment knob	Acetal	
Body cap	ABS	
Bonnet	PBT	
Bowl	Plastic bowl	Polycarbonate
	Metal bowl	Aluminum
Bowl guard	Nylon	
Filter element	Polyethylene	
Seals	Nitrile	
Springs	Steel	
Valve assembly	Brass / Nitrile	
Diaphragm assembly	Brass / Nitrile	
Panel nut	Acetal	

For best performance, regulated pressure should always be set by increasing the pressure up to the desired setting.

Dimensions mm (inches)



Manual Drain

Pulse Drain

Repair and Service Kits

Plastic bowl / Bowl guard manual drain	P31KB00BGM
Plastic bowl / Bowl guard pulse drain	P31KB00BGB
Metal bowl / w/o sight gauge pulse drain	P31KB00BMB
5µ particle filter element	P31KA00ESE
Panel mount nut - aluminum	P31KA00MM
Panel mount nut - plastic	P31KA00MP
Angle bracket (attaches via panel nut)	P31KB00MR
C-bracket (fits to body)	P31KA00MW
T-bracket with body connector	P31KA00MT
Body connector	P31KA00CB

Gauges

Square flush mount gauge

0-4 bar	K4511SCR04B
0-11 bar	K4511SCR11B
0-60 psig	K4511SCR060
0-160 psig	K4511SCR160

For best performance, regulated pressure should always be set by increasing the pressure up to the desired setting.

Square with adapter kit

0-4 bar	P6G-PR10040
0-11 bar	P6G-PR10110
0-60 psig	P6G-PR90060
0-160 psig	P6G-PR90160