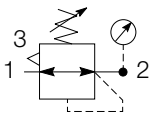


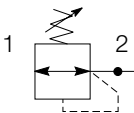
P3L Lite Regulator



Symbols



Self relieving regulator with gauge



Non relieving regulator

- Integral 1/4 ports (BSPP & NPT)
- Robust but lightweight construction
- Secondary pressure ranges 2, 4 & 8 bar
- Unbalanced poppet valve standard, with solid control piston
- Relieving & Non-relieving types
- Non-rising knob
- Industrial water & Drinking water applications on request

Options:

**P 3 L**

**R A**

**2**

**N**

**P**

Thread type	
BSPP	<b>1</b>
NPT	<b>9</b>

Port size	
1/4	<b>2</b>

Relief	
Relieving	<b>B</b>
Non relieving	<b>N</b>

Adjustment range			
With round gauge		Without gauge	
2 bar	<b>Z</b>	2 bar	<b>Y</b>
4 bar	<b>M</b>	4 bar	<b>L</b>
8 bar	<b>G</b>	8 bar	<b>N</b>

Mounting	
Plastic panel mount nut *	<b>P</b>

\* for individual mounting bracket see page:19

Port size	Description	Order Code	Flow dm <sup>3</sup> /s *	(scfm) *	Max bar (psi)	Height mm (Inches)	Width mm (Inches)	Depth mm (Inches)
1/4"	8 bar relieving	<b>P3LRA12BNNP</b>	12.8	(27)	10 (150)	88 (3.46)	40 (1.57)	40 (1.57)
1/4"	8 bar relieving + gauge	<b>P3LRA12BNGP</b>	12.8	(27)	10 (150)	88 (3.46)	40 (1.57)	72 (2.83)

\* flow with 10 bar (145 psi) inlet pressure, 6.3 bar (91.3 psi) set pressure and 1 bar (14.5 psi) pressure drop.

PDE2661TCUK  
**P3L Lite Series Air Preparation System**

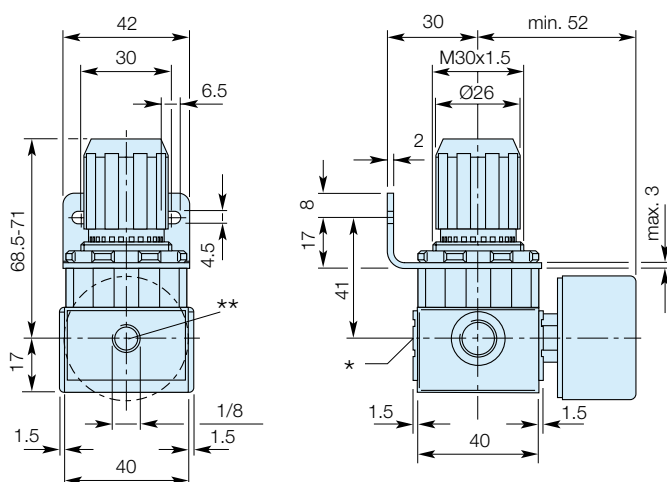
## Specifications

Flow Capacity*	1/4	12.8 dm³/s (27 scfm)
Operating Temperature	0°C (32°F) to 50°C (122°F)	
Max Supply Pressure	10 bar (150 psi)	
Adjusting Range Pressure	0-2 bar (30 psi) 0-4 bar (60 psi) 0-8 bar (125 psi)	
Port Size	BSPP / NPT	1/4
Gauge Port (2 ea.)	BSPP / NPSI	1/8
Weight	0.11 kg (24 lbs)	
Inlet pressure 10 bar (145 psi), 6.3 bar (91.3 psi) set pressure and 1 bar (14.5 psi) pressure drop.		

## Materials of Construction

Body	High Tech Polymer
Adjustment Knob	Polyamide
Bonnet	High Tech Polymer
Piston	Brass / Nitrile
Springs	Steel
Seals	Nitrile
Panel Nut	Polyamide

## Dimensions

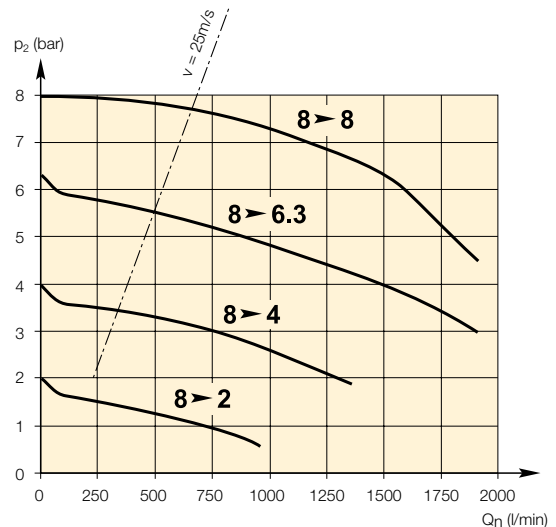


\* On delivery the screw plug is not assembled

\*\* Two opposite gauge ports 1/8"

## Flow Charts

### Regulator



## Repair and Service Kits

Panel mount nut - Aluminium	<b>P3LKA00MM</b>
Panel mount nut - Plastic	<b>P3LKA00MP</b>
Angle Bracket (uses panel mount threads)	<b>P3LKA00MR</b>

## Gauges

### 40mm (1 1/2") Round 1/8" centre back mount

0-30 PSI / 0-2 bar	<b>KZ8810-00</b>
0-58 PSI / 0-4 bar	<b>KZ8811-00</b>
0-160 PSI / 0-10 bar	<b>KZ8813-00</b>