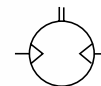


**NOTE!** All technical data are based on a working pressure of 6 bar and with oil.  
Speed tolerance accuracy is  $\pm 10\%$ .

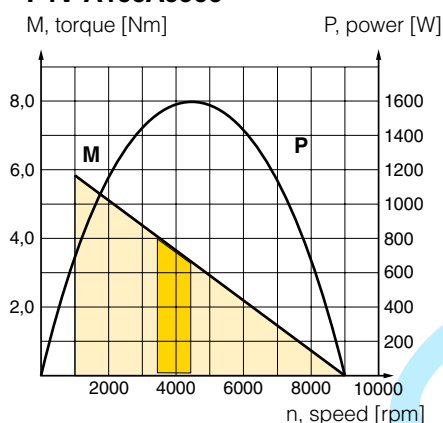


### A: Basic reversible motor without gear box, IEC Flange

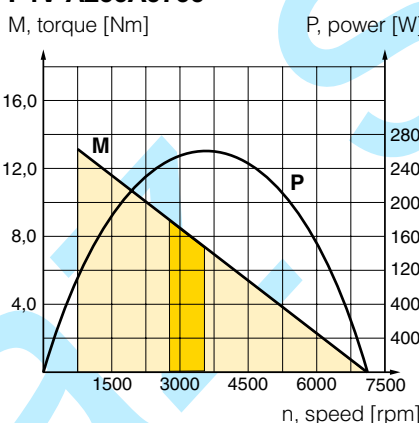
Max power	Free speed*	Nominal speed	Nominal torque	Min start torque	Air consumption at max power	Con- nec- tion	Min pipe ID inlet/ outlet mm	Weight	Order code
kW	rpm	rpm	Nm	Nm	l/s			Kg	
1,600	9000	4500	3,3	5,0	32	G1/2	15	4,2	<b>P1V-A160A0900</b>
2,600	7000	3500	7,1	11,0	60	G3/4	19	7,9	<b>P1V-A260A0700</b>
3,600	6000	3000	11,5	17,0	97	G1	25	16,5	<b>P1V-A360A0600</b>

\* maximum admissible speed (idling)

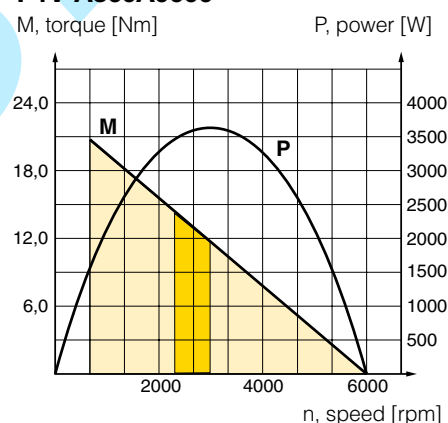
#### P1V-A160A0900



#### P1V-A260A0700



#### P1V-A360A0600



Possible working range of motor.

Optimum working range of motor.

Higher speeds = more vane wear  
Lower speeds with high torque = more gearbox wear

### Permitted shaft loadings

Max permitted load on output shaft for basic motors (based on 10,000,000 revolutions of the output shaft, with 90% probable service life for ball bearings).

	$F_{ax}$ N	$F_{rad}$ N	a mm
P1V-A160A0900	600	1000	15
P1V-A260A0700	700	1400	20
P1V-A360A0600	900	1900	25

$F_{rad}$  = Radial loading (N)

$F_{ax}$  = Axial loading (N)

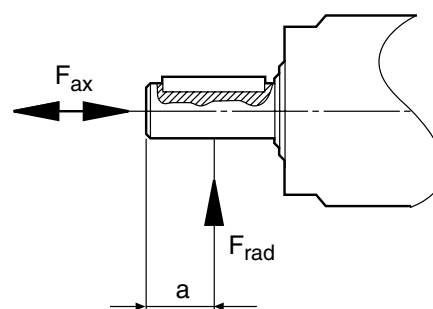
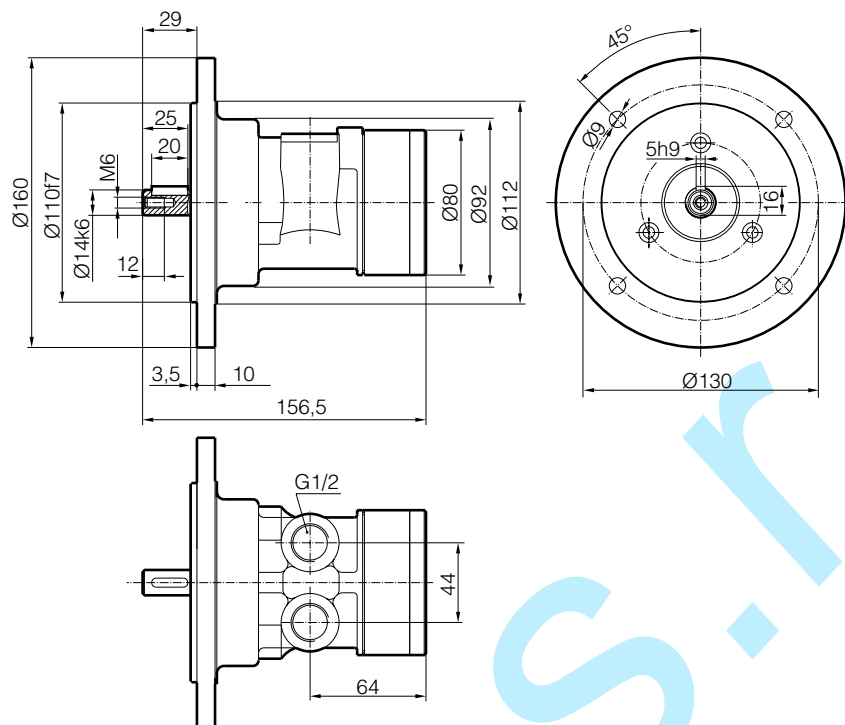


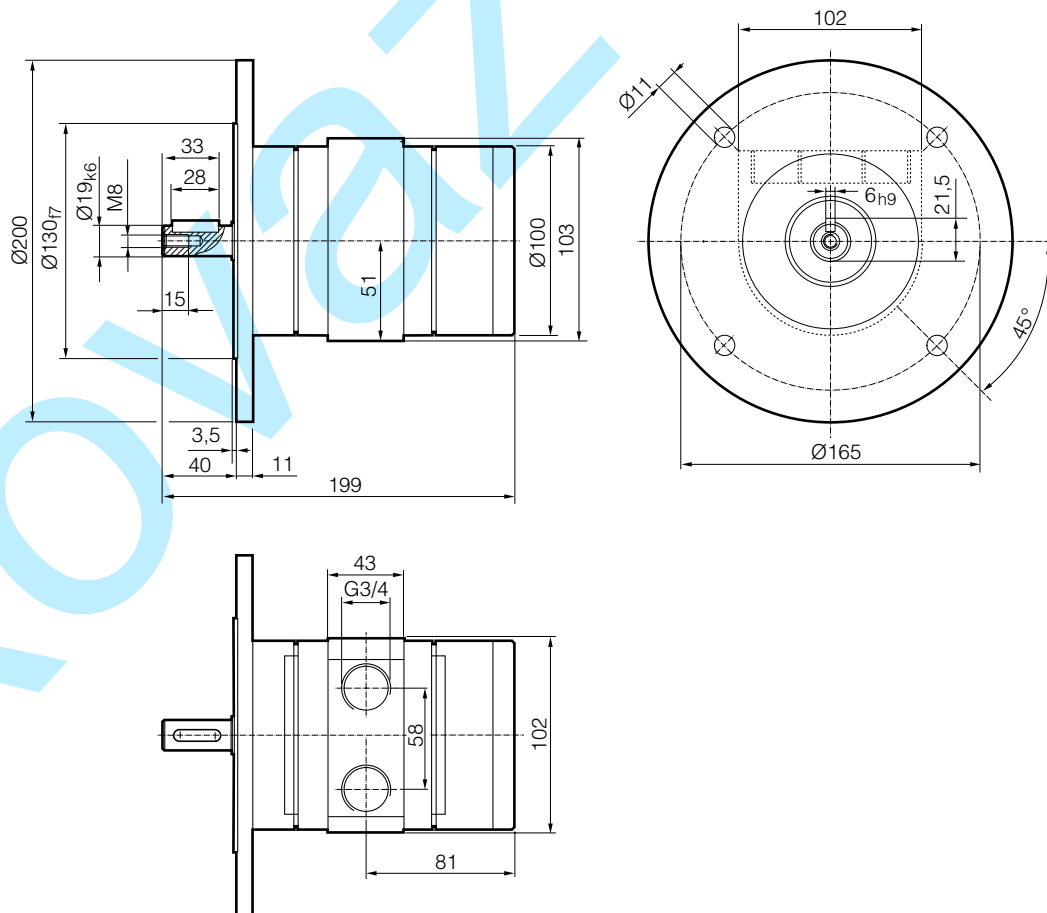
Fig. 1: Loading on output shaft.

## Dimensions (mm)

## Flange motor IEC71AB5 (P1V-A160)

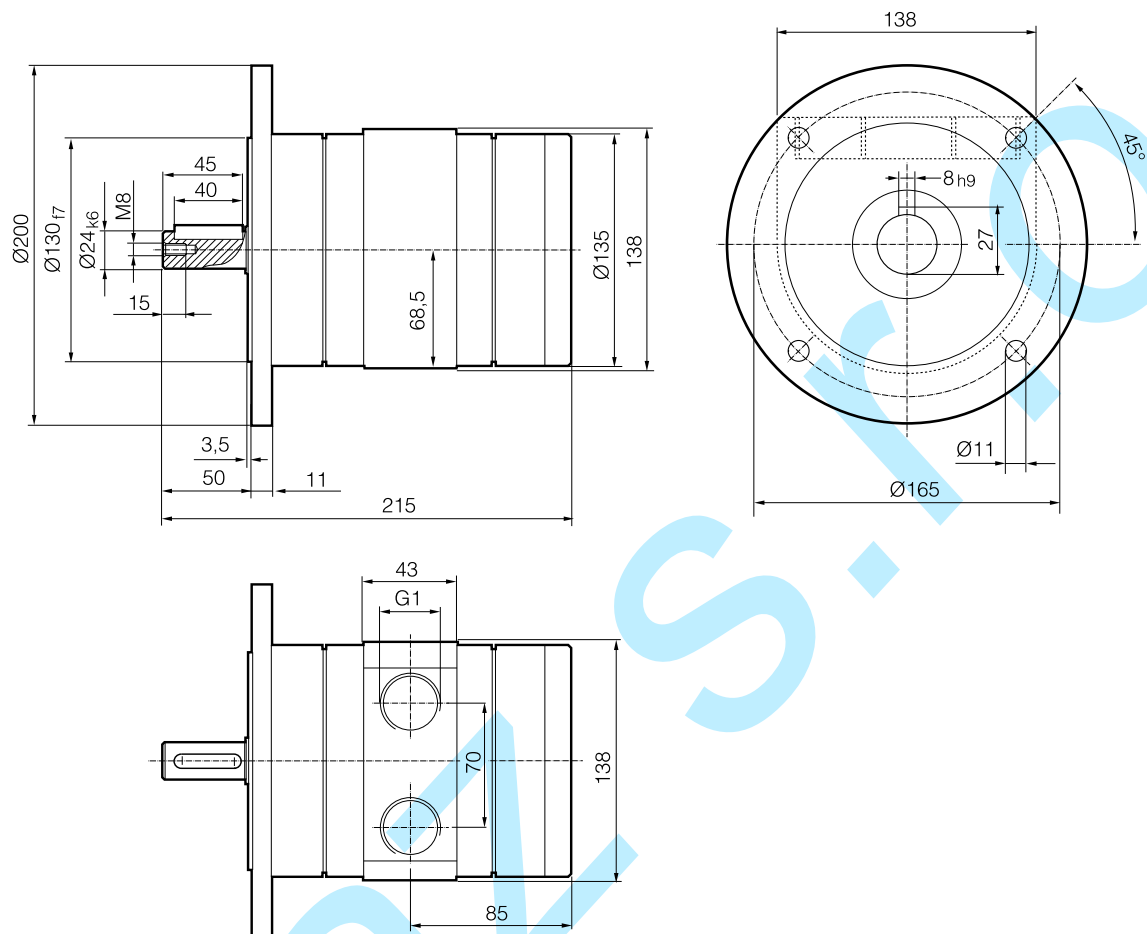


## Flange motor IEC80AB5 (P1V-A260)



## Dimensions (mm)

Flange motor IEC90AB5 (P1V-A360)



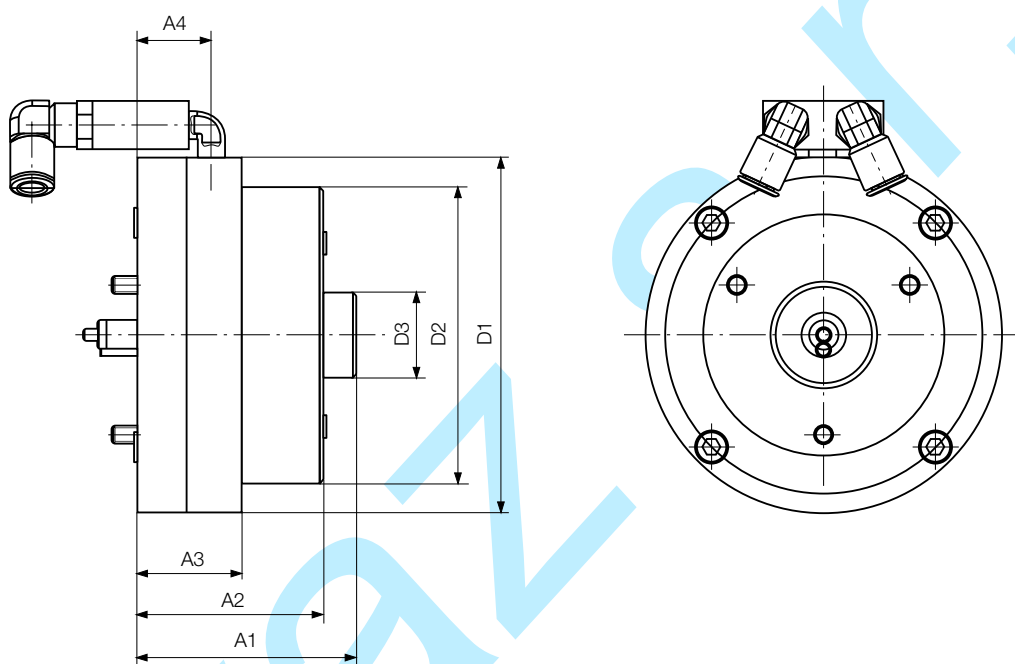
## Holding Brakes

Our holding brakes are designed for the motors without gear boxes only.

For motor without gear box	Type	P1V-A160A0900	P1V-A260A0700	P1V-A360A0600
Holding brake	Order code	<b>P1V-A/445709B</b>	<b>P1V-A/445711B</b>	<b>P1V-A/445713B</b>
Brake Torque		12 Nm*)	28 Nm*)	46 Nm*)

\*) The holding brake is not designed for use with a different drive system. Please only use it in combination with the stated motor types.

## Dimensions (mm)



Dimensions of the braking device (mm)

Order code	A1	A2	A3	A4	D1	D2	D3
<b>P1V-A/445709B</b>	72.5	61.5	34.5	24.5	118	98	28
<b>P1V-A/445711B</b>	107	98	43.5	35.5	190	162	28
<b>P1V-A/445713B</b>	107	98	43.5	35.5	190	162	28