

<b>PG</b>		<b>517</b>											
<b>Gear Design</b>	<b>Type</b>		<b>Unit</b>	<b>Displacement</b>	<b>Rotation</b>	<b>Shaft</b>	<b>Flange</b>	<b>Shaft Seal</b>	<b>Side Suction Port</b>	<b>Side Pressure Port</b>	<b>Rear Suction Port <sup>1)</sup></b>	<b>Rear Pressure Port <sup>1)</sup></b>	

Code	Type
P	Pump

Code	Unit
	Pump
A	Single unit
B	Multiple unit
M	Single distributor unit

Displacement*	
Code	ccm
0160	16
0190	19
0230	23
0280	28
0330	33
0380	38
0440	44
0520	52
0700	70

<sup>1)</sup> Others on request

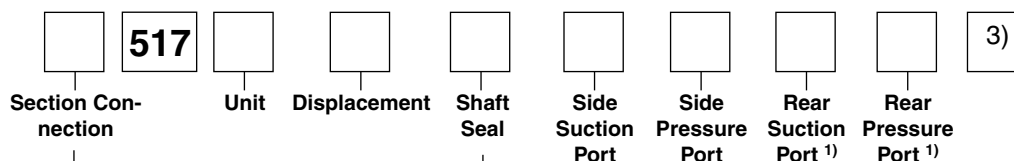
Code	Rotation
C	Clockwise
A	Counter clockwise

Code	Shaft
D1	13T, 16/32DP, 41.2L, SAE "B" spline
E1	15T, 16/32DP, 46L, SAE "B-B" spline
M1	Ø22.2, 6.3Key, no thread, 41.2L, SAE "B", parallel
M2	Ø25.4, 6.3Key, no thread, 46L, SAE "B-B", parallel
T1	Ø21.59, 11.2L, 4.0 Key, M14x1.5, taper 1:8

Not all variances of ordering codes can be offered. Please check available part numbers first. For not yet implemented part numbers or special requests please contact Parker Hannifin.

<sup>1)</sup> Only coded for the last section.



Code	Section Connection
S	Separate inlets
C	Common inlets

Code	Shaft Seal
X	No seal
N	NBR
V	FPM, FKM
M	Double NBR
W	Double FPM

Code	Flange
D7	98.4x128.2 - Ø50.77 rectangular
H3	146.1 - Ø101.6 SAE "B" 2 bolt flange
K6	146.1 - Ø101.6 SAE "B" 2 bolt flange, aluminium

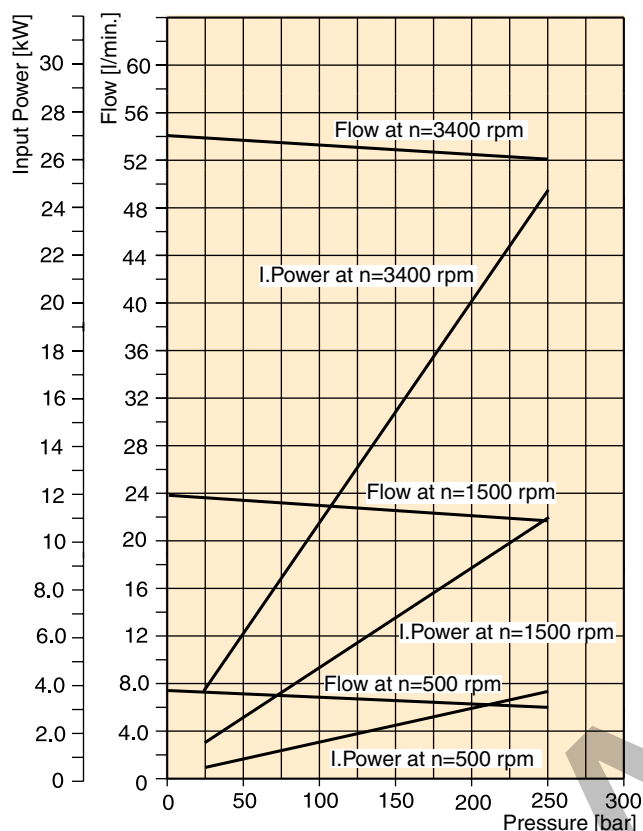
Code	Port Options	Code	Port Options
B1	No ports	L1*	13 mm-Ø30 mm-M6 diamond
D3 <sup>2)</sup>	3/4 - 16 UNF thread	L2*	19 mm-Ø40 mm-M8 diamond
D4 <sup>2)</sup>	7/8 - 14 UNF thread	L3*	27 mm-Ø51 mm-M10 diamond
D5 <sup>2)</sup>	1 1/16 - 12 UN thread	N1 <sup>2)</sup> *	1/2"-5/16-18UNC SAE Split Flange
D6 <sup>2)</sup>	1 5/16 - 12 UN thread	N2 <sup>2)</sup> *	3/4"-3/8-16UNC SAE Split Flange
D7 <sup>2)</sup> *	1 5/8 - 12 UN thread	N3 <sup>2)</sup> *	1"-3/8-16UNC SAE Split Flange
D8*	1 7/8 - 12 UN thread	N4 <sup>2)</sup> *	1 1/4"-7/16-14UNC SAE Split Flange
E3	1/2 - 12 BSP thread	N5 <sup>2)</sup> *	1 1/2"-1/2-13UNC SAE Split Flange
E4	5/8 - 14 BSP thread	P1 <sup>2)</sup> *	12.7 mm - M8 1/2" Metric Split Flange
E5	3/4 - 16 BSP thread	P2*	19.0 mm - M10 3/4" Metric Split Flange
E6	1 - 11 BSP thread	P3*	25.4 mm - M10 1" Metric Split Flange
E7*	1 1/4 - 11 BSP thread	P4*	31.8 mm - M10 1 1/4" Metric Split Flange
E8*	1 1/2 - 11 BSP thread	P5*	38.1mm - M12 1 1/2" Metric Split Flange
G4 <sup>2)</sup>	M22x1.5 thread		
G5 <sup>2)</sup>	M26x1.5 thread		
G7 <sup>2)</sup>	M30x1.5 thread		
G8 <sup>2)</sup>	M33x2 thread		
G9 <sup>2)</sup> *	M42x2 thread		
J5*	15 mm - Ø35 mm - M6 square		
J7*	20 mm - Ø40 mm - M6 square		
J8*	18 mm - Ø55 mm - M8 square		
J9*	26 mm - Ø55 mm - M8 square		

2) Non standard, on request only

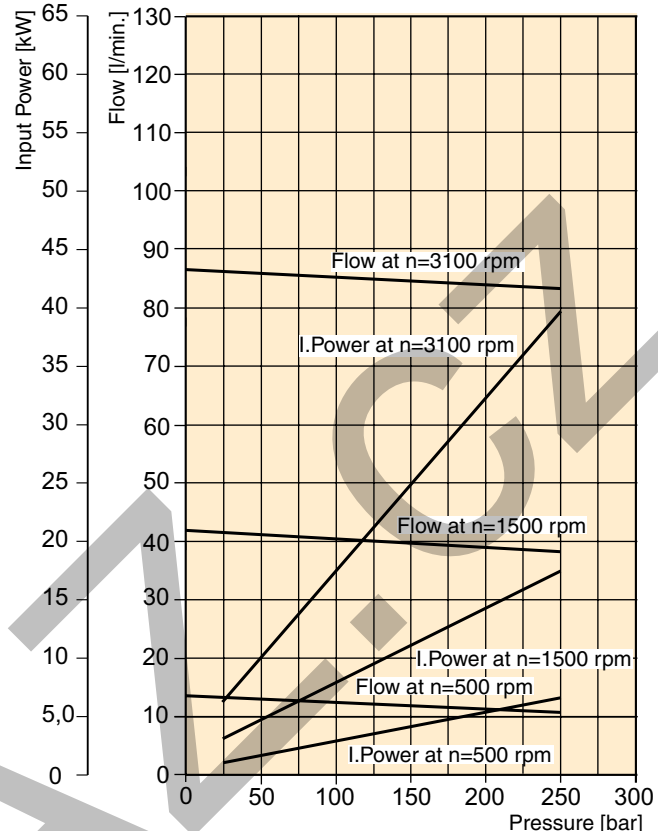
\*) Not usable for rear ports

3) For further "B" triple unit repeat displacement, shaft seal between sections, side suction port, side pressure port, rear suction port, rear pressure port.

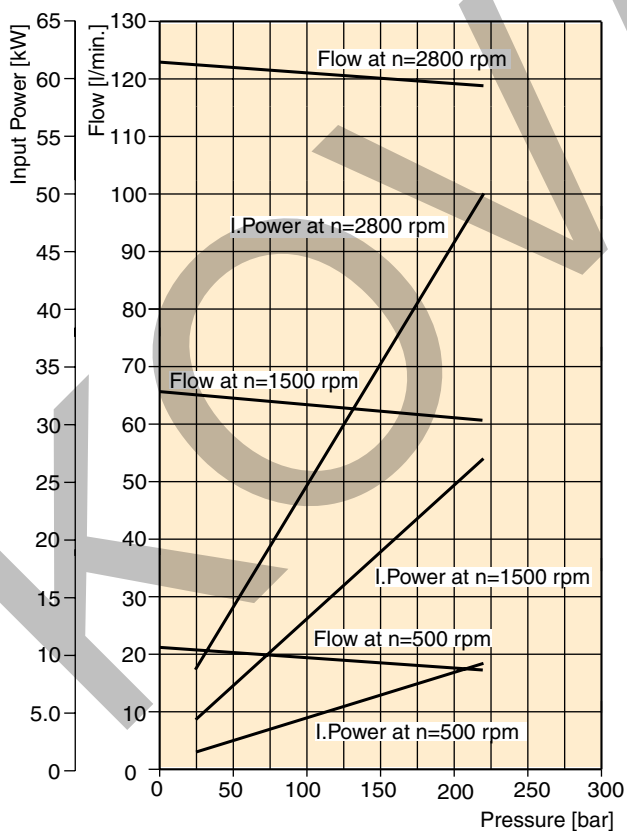
PGP 517- 16.0 CC



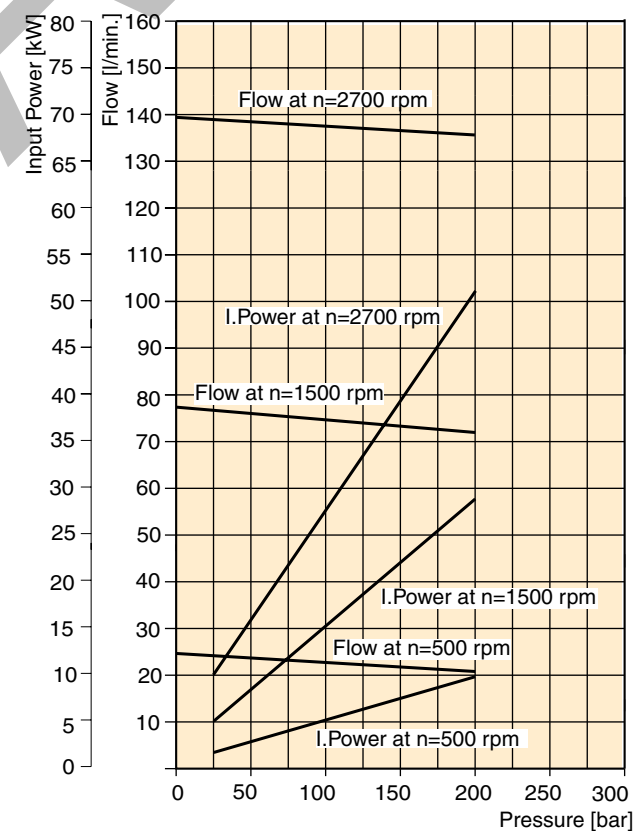
PGP 517 -28.0 CC



PGP 517 - 44.0 CC



PGP 517- 52.0 CC



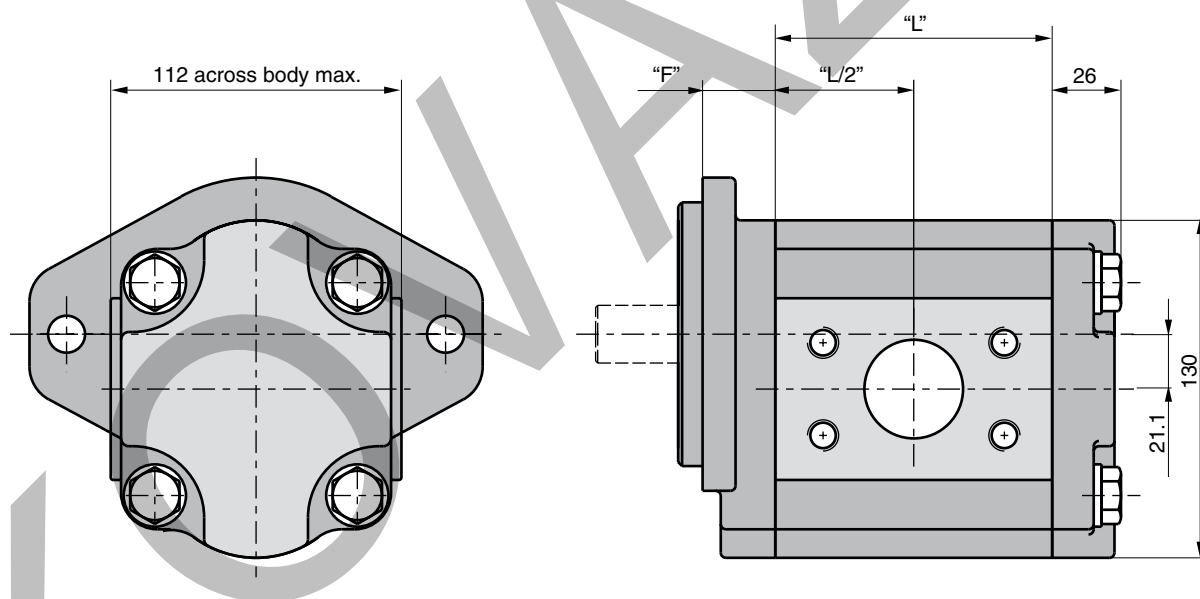
Fluid Temperature =  $45 \pm 2^\circ\text{C}$   
Viscosity =  $36 \text{ mm}^2/\text{s}$   
Inlet Pressure =  $0.9 + 0.1 \text{ bar absolute}$

**PGP 517 Specification - Standard Displacements**

Pump Displacement	Code	0160	0190	0230	0280	0330	0380	0440	0520	0700
	cm <sup>3</sup> /rev	16.0	19.0	23.0	28.0	33.0	38.0	44.0	52.0	70.0
Max. Continuous Pressure	bar	250	250	250	250	250	250	220	200	160
Minimum Speed @ Max. outlet pressure	rpm	500	500	500	500	500	500	500	500	500
Maximum Speed @ 0 Inlet & Max. outlet pressure	rpm	3400	3300	3300	3100	3000	3000	2800	2700	2400
Pump Input Power @ Max. Pressure and 1500 rpm	kW	11	13.1	15.8	19.3	22.7	26.1	27	28.6	31.2
Dimension "L"	mm	70.3	73.3	77.4	82.4	87.5	92.5	98.6	106.7	124.9
Approximate Weight <sup>1)</sup>	kg	8.00	8.12	8.29	8.50	8.70	8.91	9.16	9.49	10.24

<sup>1)</sup> Single pump with Flange H3 and Port end cover B1

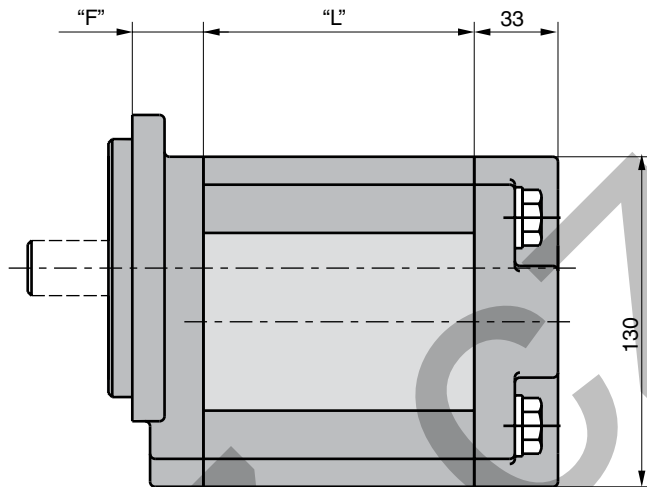
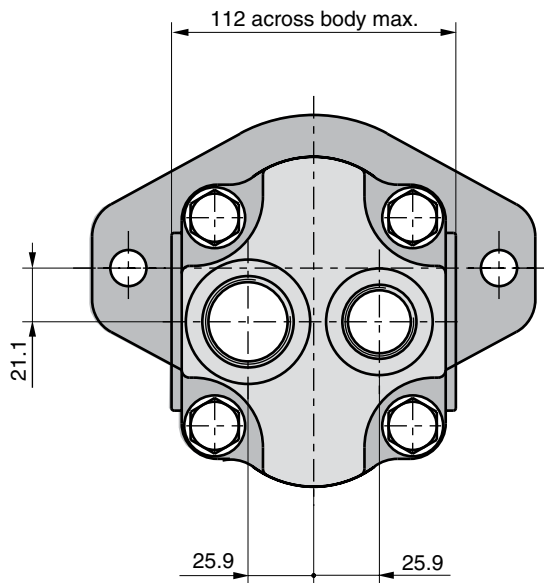
**Single Unit PGP 517**



**Dimension "L"** see table above

**Dimension "F"** see flanges on page 43

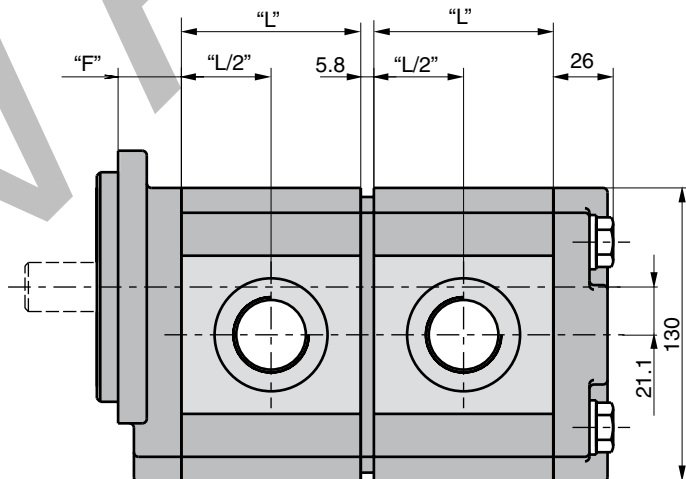
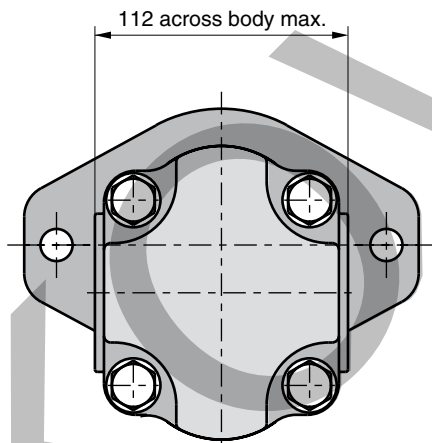
**Dimension Shafts** see pages 46 to 48

**Single Unit PGP 517 with rear ports**

**Dimension "L"** see table on page 41

**Dimension "F"** see flanges on page 43

**Dimension Shafts** see pages 46 to 48

**Tandem Unit PGP 517**

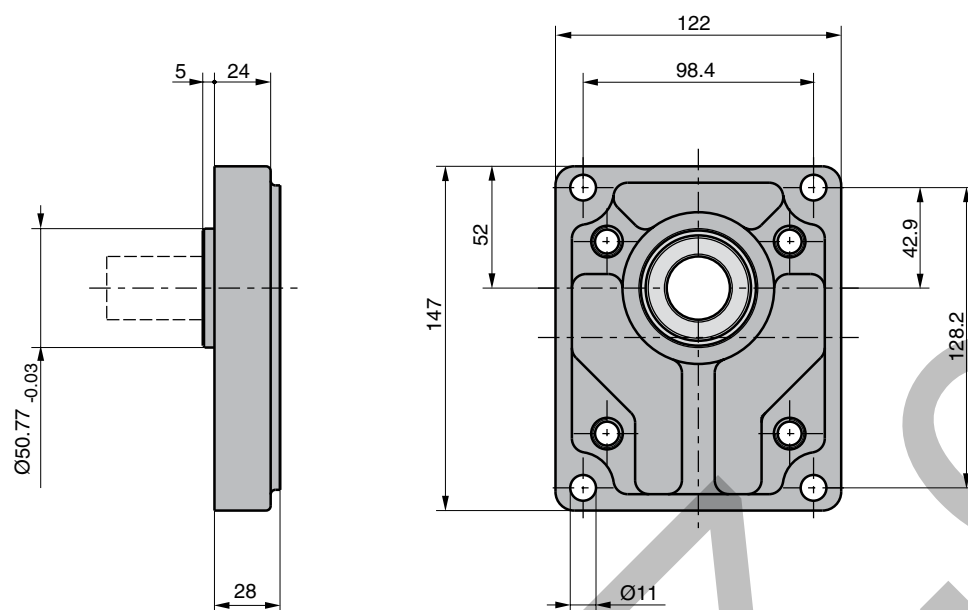
**Dimension "L"** see table on page 41

**Dimension "F"** see flanges on page 43

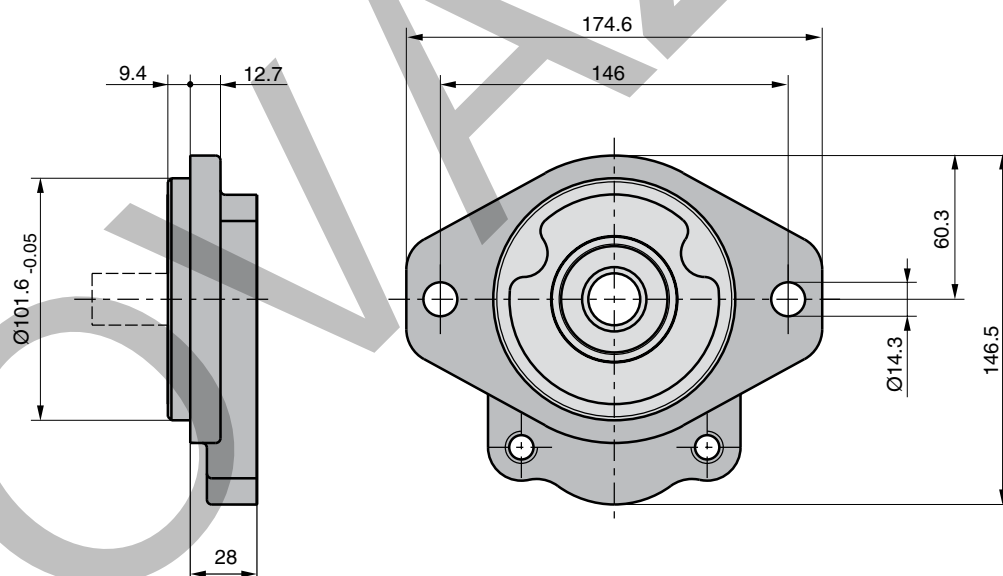
**Dimension Shafts** see pages 46 to 48

**PGP 517 Mounting Flange**

**Code D7**



**Code H3/K6**



**PGP 517 Porting**

**Code E**

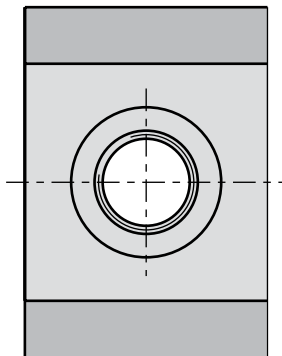
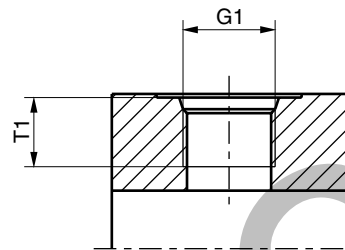
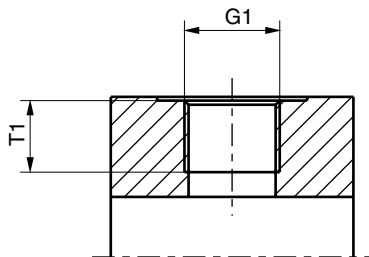
British Standard Pipe

**Code G**

Metric straight thread

**Code D**

SAE straight thread

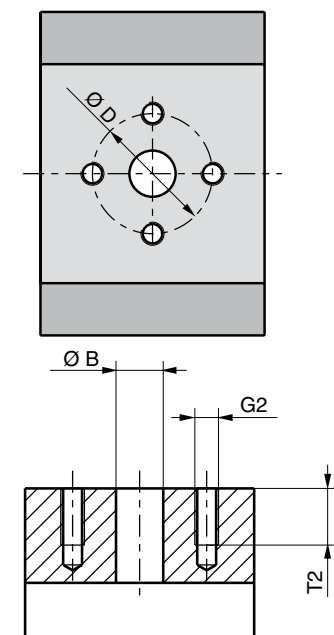


**PGP 517**

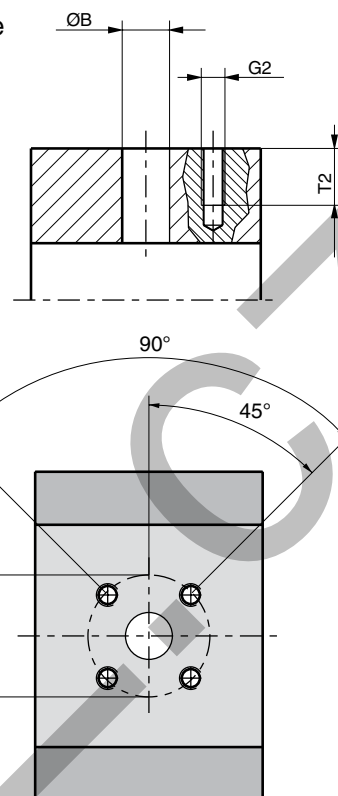
Code	G1	T1
	Thread	Dimensions
D2	9/16-18 UNF	12.7
D3	3/4-16 UNF	14.3
D4	7/8-14 UNF	16.7
D5	1 1/16-12 UN	19.0
D6	1 5/16-12 UN	19.0
D7	1 5/8-12 UN	19.0
D8	1 7/8-12 UN	19.0
E2	3/8-19 BSP	12.0
E3	1/2-14 BSP	14.0
E4	5/8-14 BSP	16.3
E5	3/4-16 BSP	16.0
E6	1-11 BSP	18.0
E7	1 1/4-11 BSP	20.0
E8	1 1/2-11 BSP	22.0
G4	M 22x1.5	14.0
G5	M 26x1.5	16.0
G7	M 30x1.5	12.0
G8	M 33x2	18.0
G9	M 42x2	20.0

**Port options****Heavy-duty aluminium Pumps and Motors  
Series PGP 517****PGP 517 Porting****Code L**

4-Bolt flange

**Code J**

European flange

**Code N**

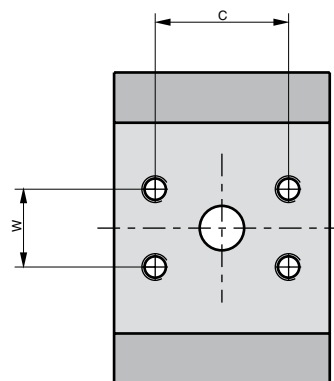
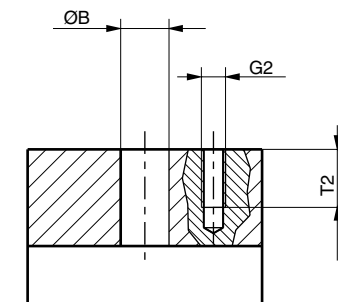
SAE split flange

**Code P**

SAE split flange metric thread

**PGP 517**

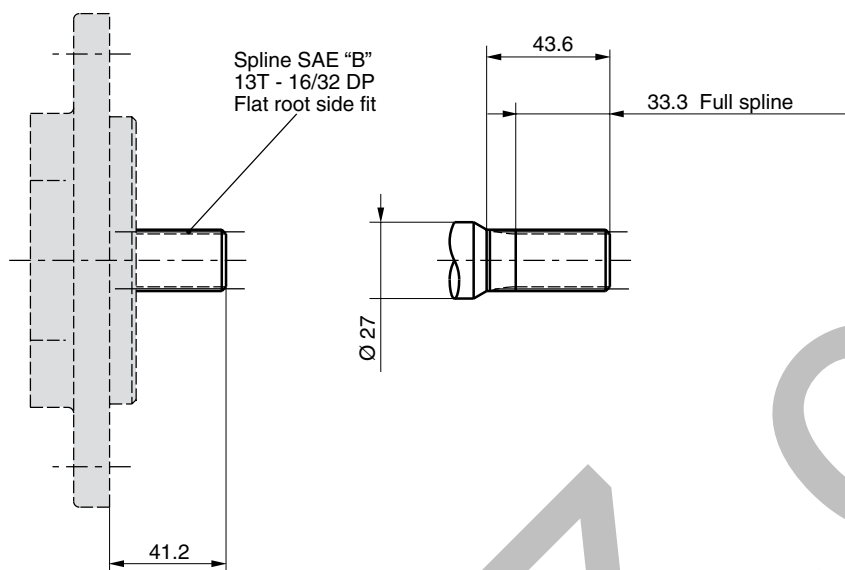
Code	G2	Ø B	Ø D	S	C	W	T2
	Thread	Dimensions					
J5	M6	15.0	35.0				12.5
J7	M6	20.0	40.0				13.0
J8	M8	18.0	55.0				15.0
J9	M8	26.0	55.0				15.0
L1	M6	13.0	30.0				13.0
L2	M8	19.0	40.0				15.0
L3	M10	27.0	51.0				18.0
L4	1/4-20 UNF	13.0	30.0				13.0
N1	5/16-18 UNC	12.7			38.10	17.48	15.0
N2	3/8-16 UNC	19.0			47.63	22.23	14.0
N3	3/8-16 UNC	25.4			52.37	26.19	20.6
N4	7/16-14 UNC	31.8			58.72	30.17	20.6
N5	1/2-13 UNC	38.1			69.82	35.71	20.6
P1	M8	12.7			38.10	17.48	15.0
P2	M10	19.0			47.63	22.23	20.6
P3	M10	25.4			52.37	26.19	21.4
P4	M10	31.8			58.72	30.17	20.6
P5	M12	38.1			69.82	35.71	20.6



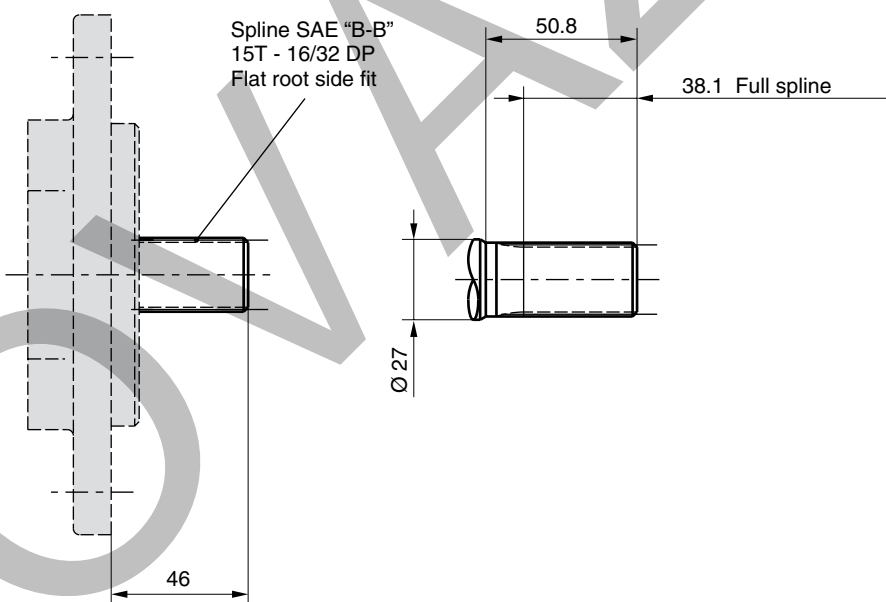


**PGP 517 Drive Shaft**

**Code D1**

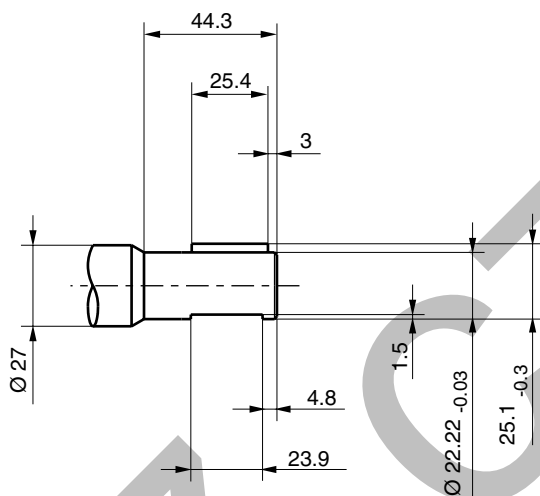
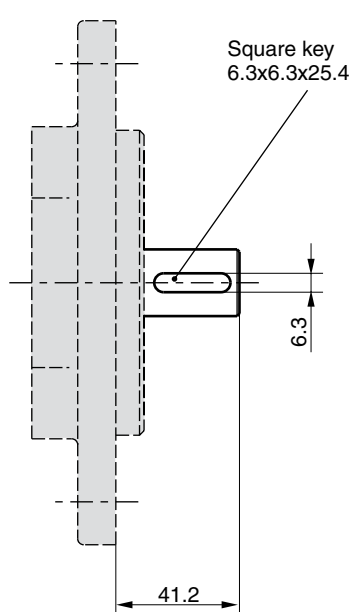


**Code E1**

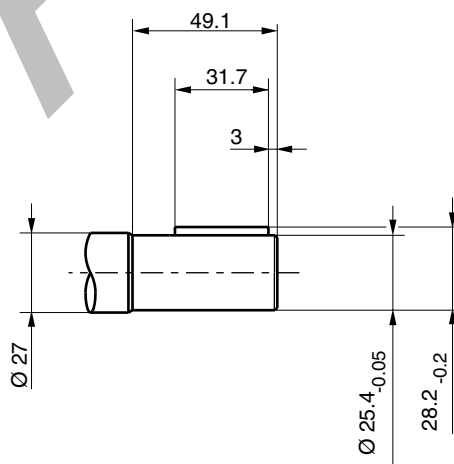
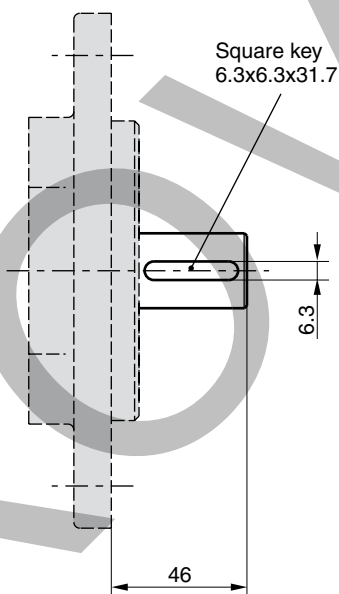


**PGP 517 Drive Shaft**

**Code M1**

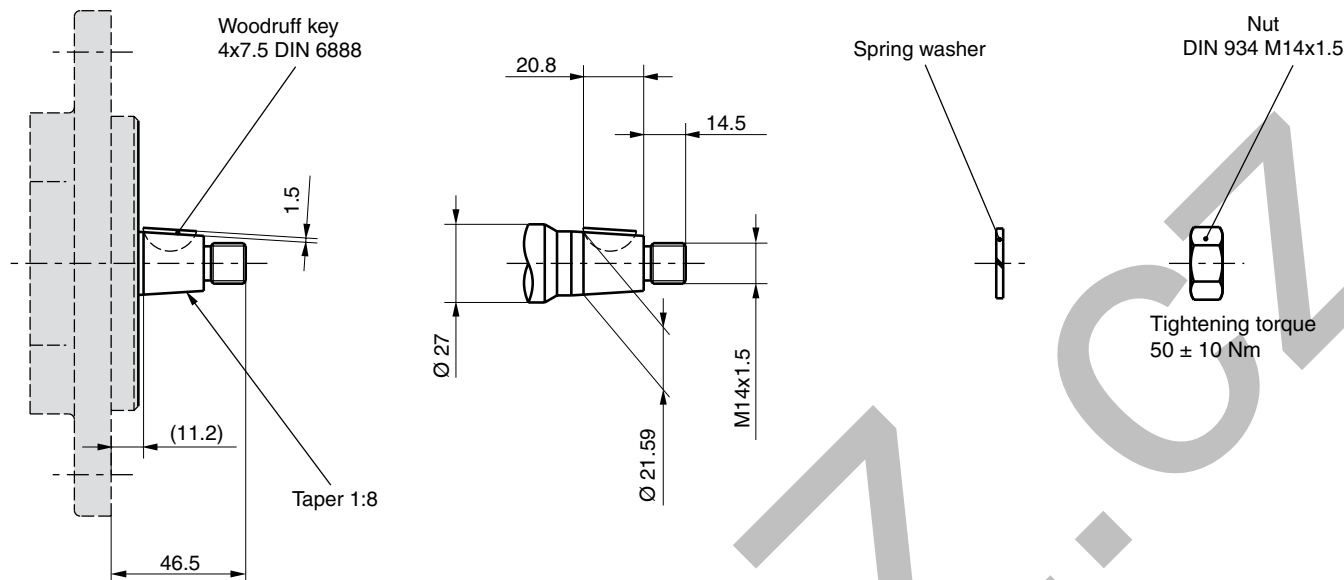


**Code M2**



**PGP 517 Drive Shaft**

**Code T1**



**PGP/PGM 517 - Shaft Load Capacity**

Code	Description	Torque Rating [Nm]
<b>D1</b>	13T, 16/32DP, 41.2L, SAE“B” spline	345
<b>E1</b>	15T, 16/32DP, 46L, SAE“B-B” spline	530
<b>M1</b>	Ø22.2, 6.3 KEY, no thd, 41.2L, SAE“B” parallel	251
<b>M2</b>	Ø25.4, 6.3 KEY, no thd, 46L, SAE“B-B” parallel	395
<b>T1</b>	Ø21.59, 11.2 L, 4.0 KEY, M14x1.5 taper 1:8	250
	Multiple pump connection shaft	228

$$\text{Torque [Nm]} = \frac{\text{Displacement [cm}^3\text{/rev]} \times \text{Pressure [bar]}}{57.2}$$

