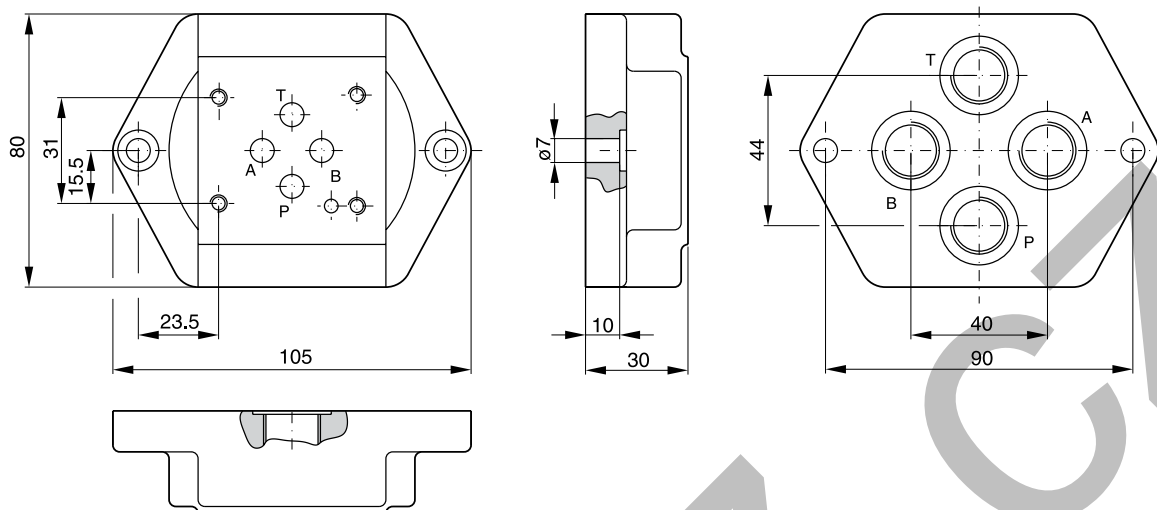
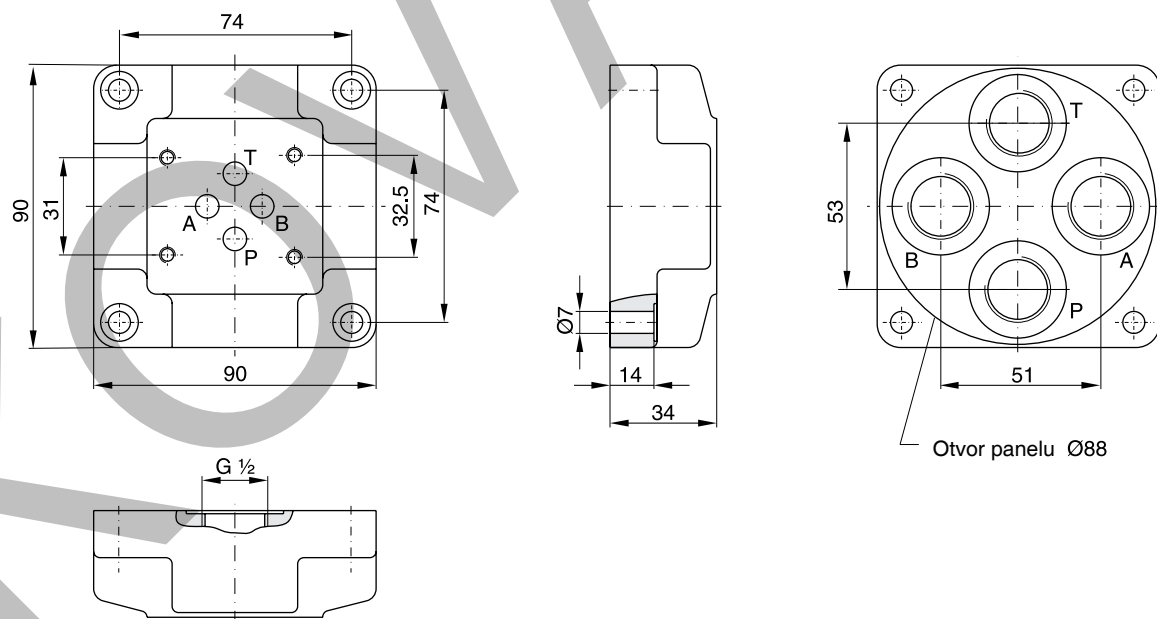


## Velikost ventilu DIN NG06, CETOP 03, NFPA D03



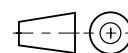
Objednací kód	
<b>SPD 22 B 910</b>	P, A, B a T = G 1/4
<b>SPD 23 B 910</b>	P, A, B a T = G 3/8

## Velikost ventilu DIN NG06, CETOP 03, NFPA D03

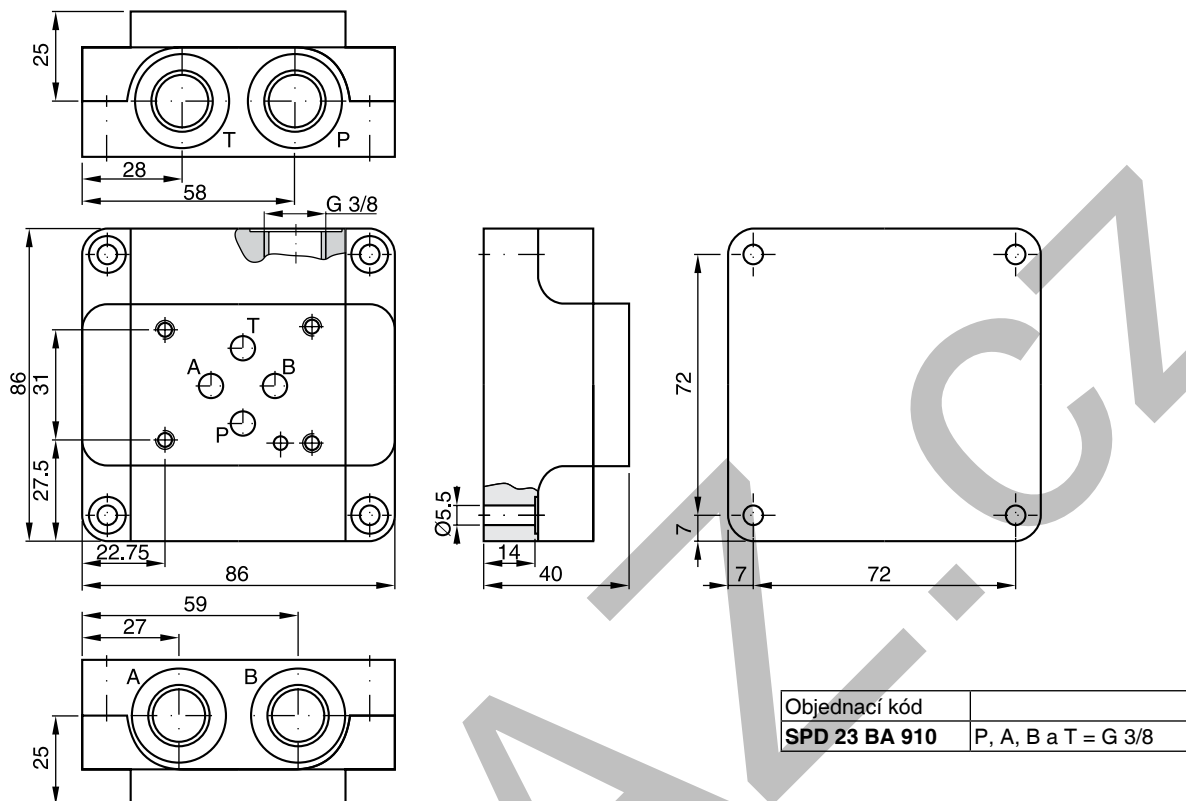


Objednací kód	
<b>SPD 24 B 910</b>	P, A, B a T = G 1/2

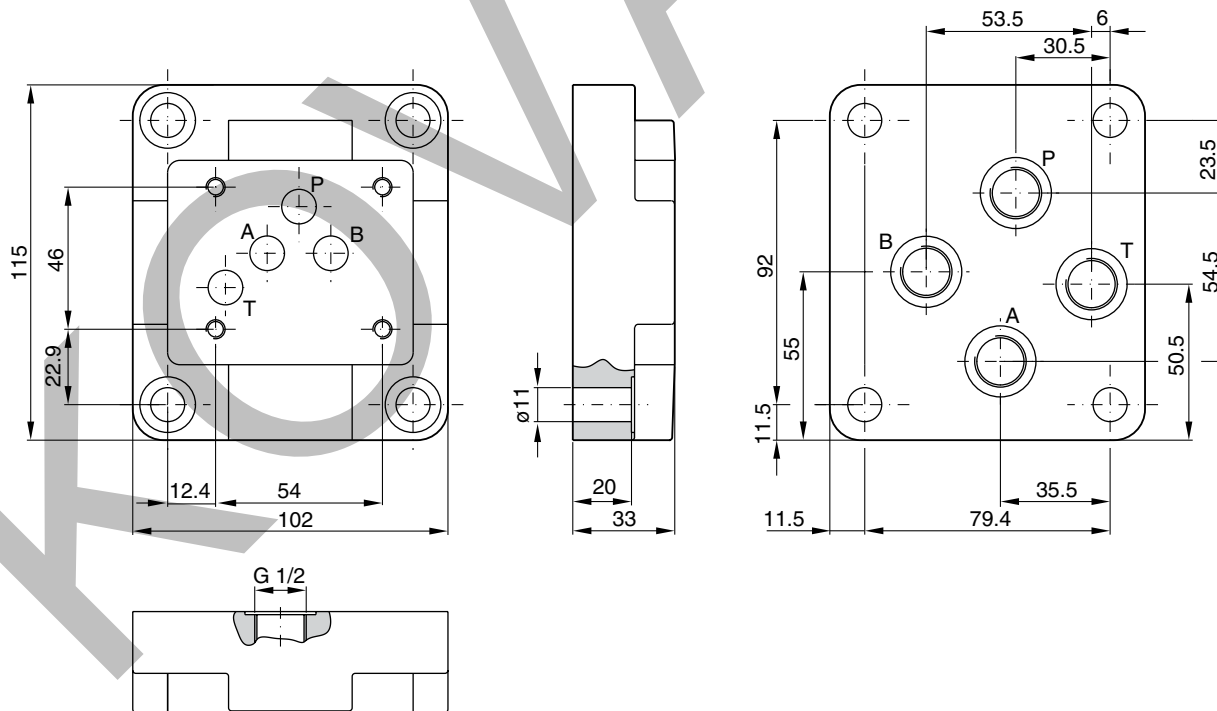
**Položky označené tučně**  
jsou ihned k dodání.



**Velikost ventilu DIN NG06, CETOP 03, NFPA D03**



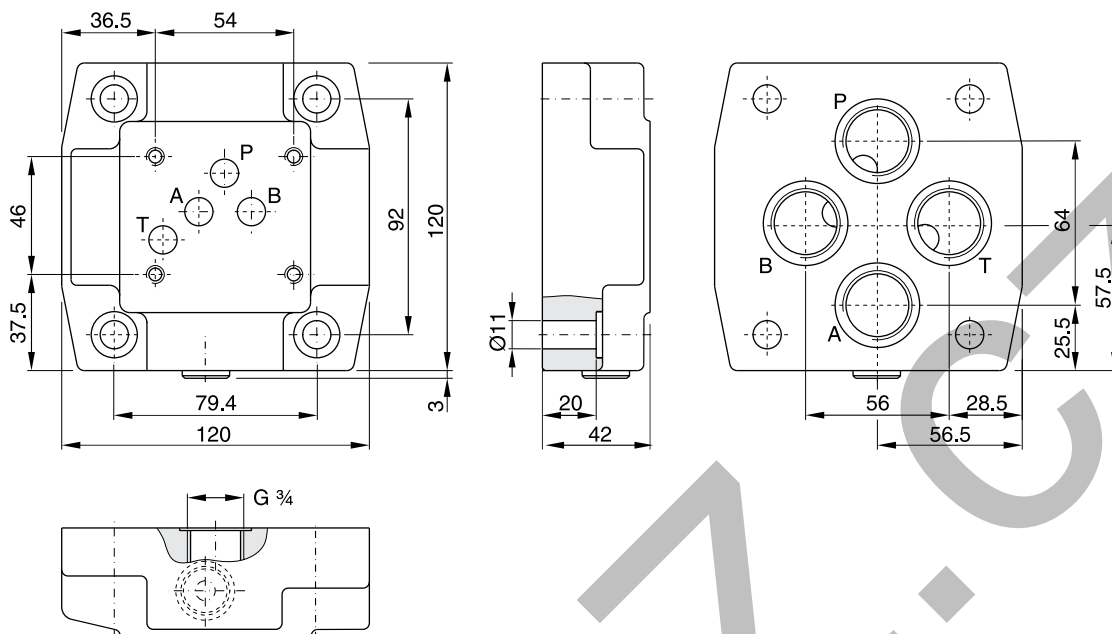
**Velikost ventilu DIN NG10, CETOP 05, NFPA D05**



**Položky označené tučně**  
 jsou ihned k dodání.

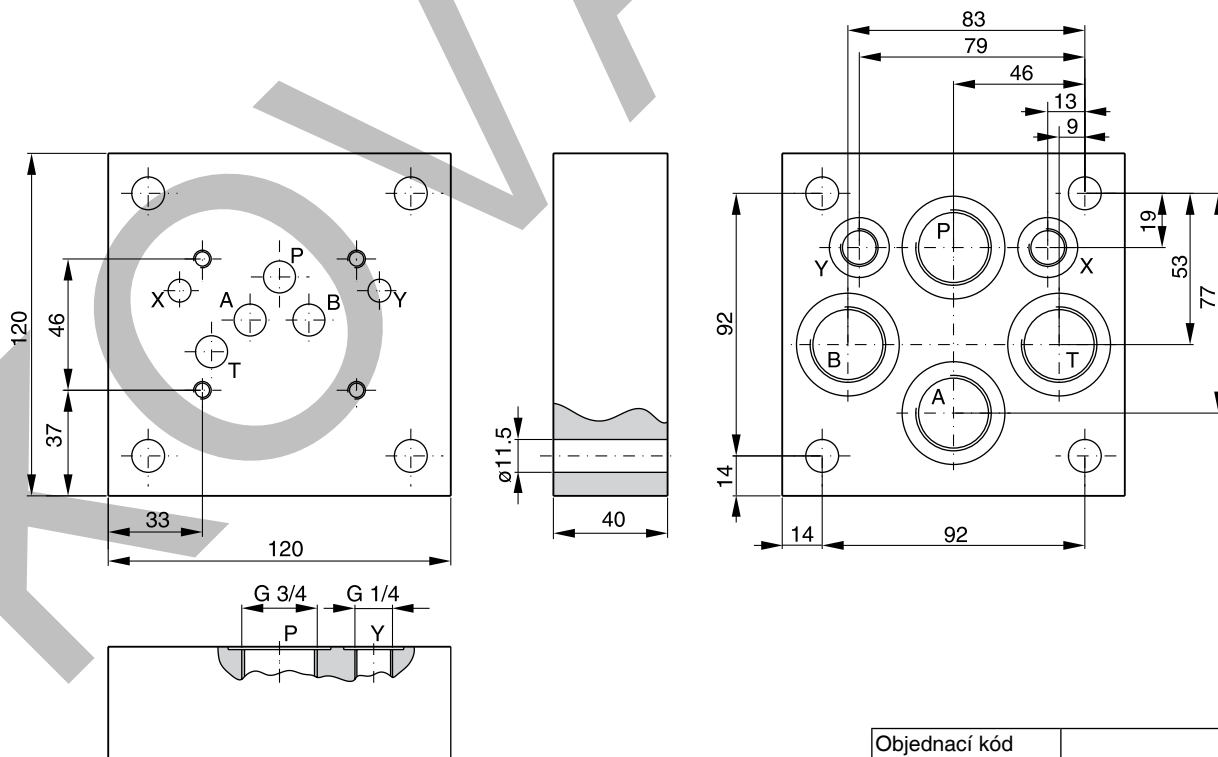


## Velikost ventilu DIN NG10, CETOP 05, NFPA D05



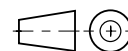
Objednací kód	
<b>SPD 36 B 920</b>	P, A, B a T = G 3/4

## Velikost ventilu DIN NG10, CETOP 05, NFPA D05

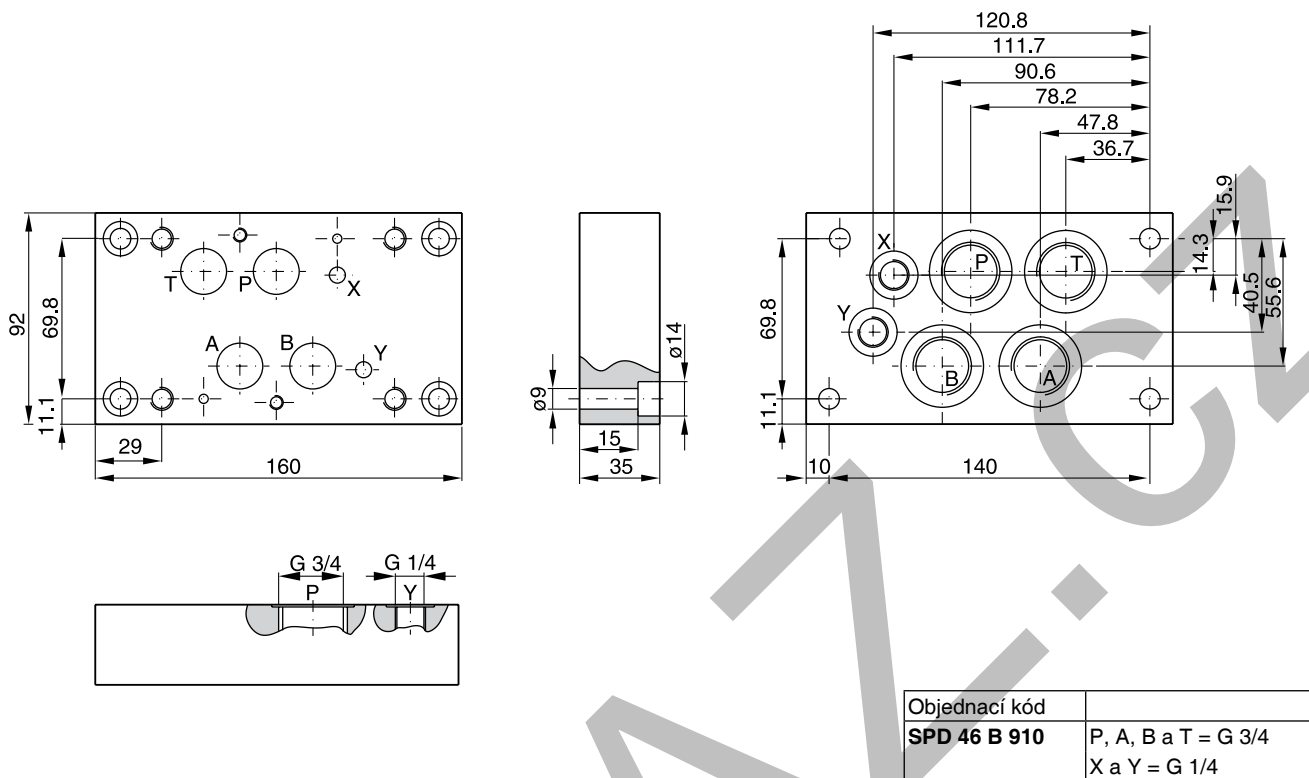


Objednací kód	
<b>SPD 316 B 960</b>	P, A, B a T = G 3/4 X a Y = G 1/4

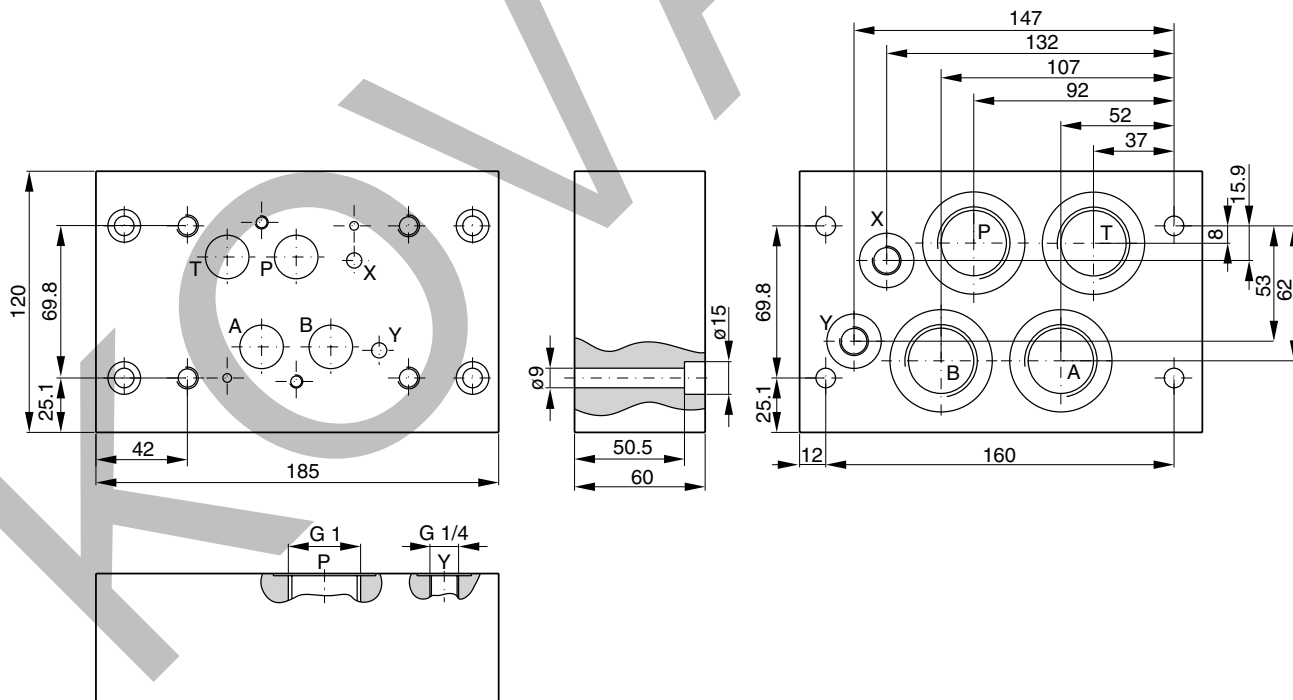
**Položky označené tučně**  
jsou ihned k dodání.



Velikost ventilu DIN NG16, CETOP 07, NFPA D07

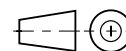


Velikost ventilu DIN NG16, CETOP 07, NFPA D07

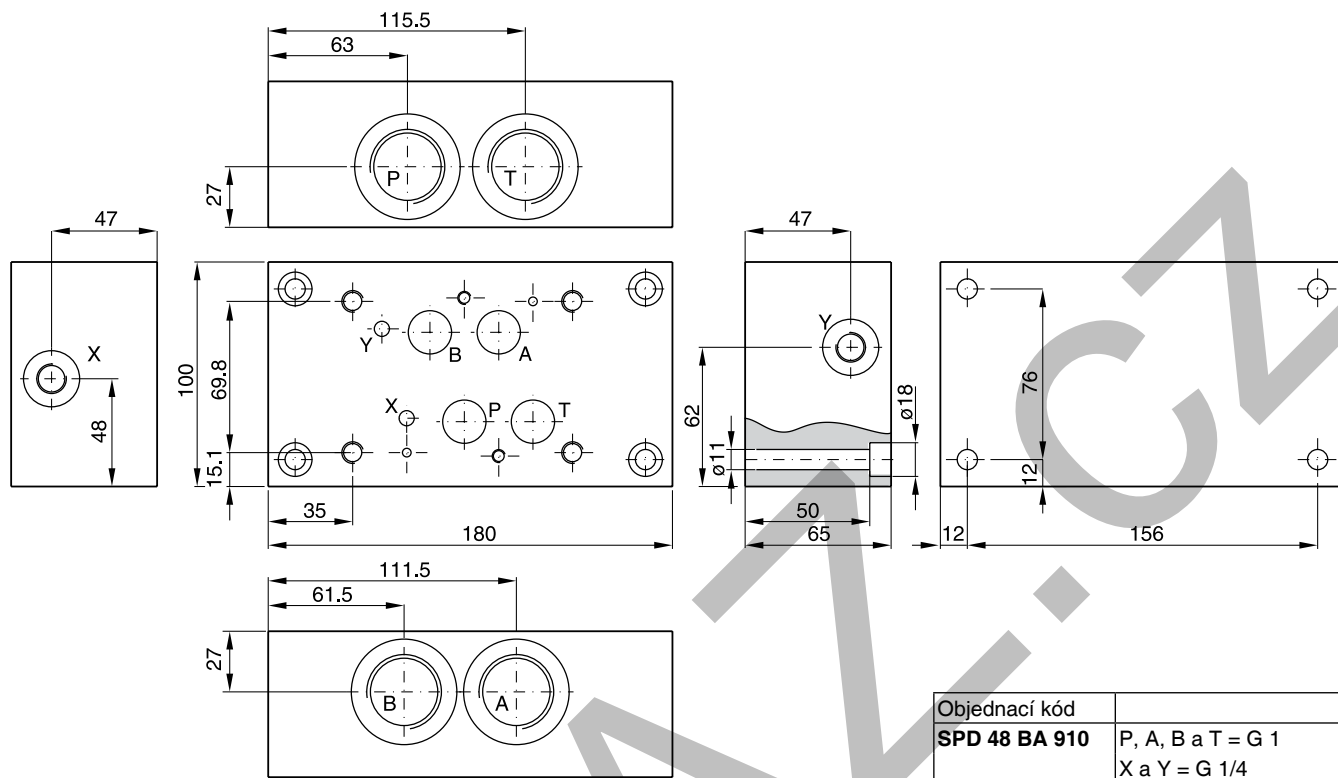


Objednací kód	
<b>SPD 48 B 910</b>	P, A, B a T = G 1 X a Y = G 1/4

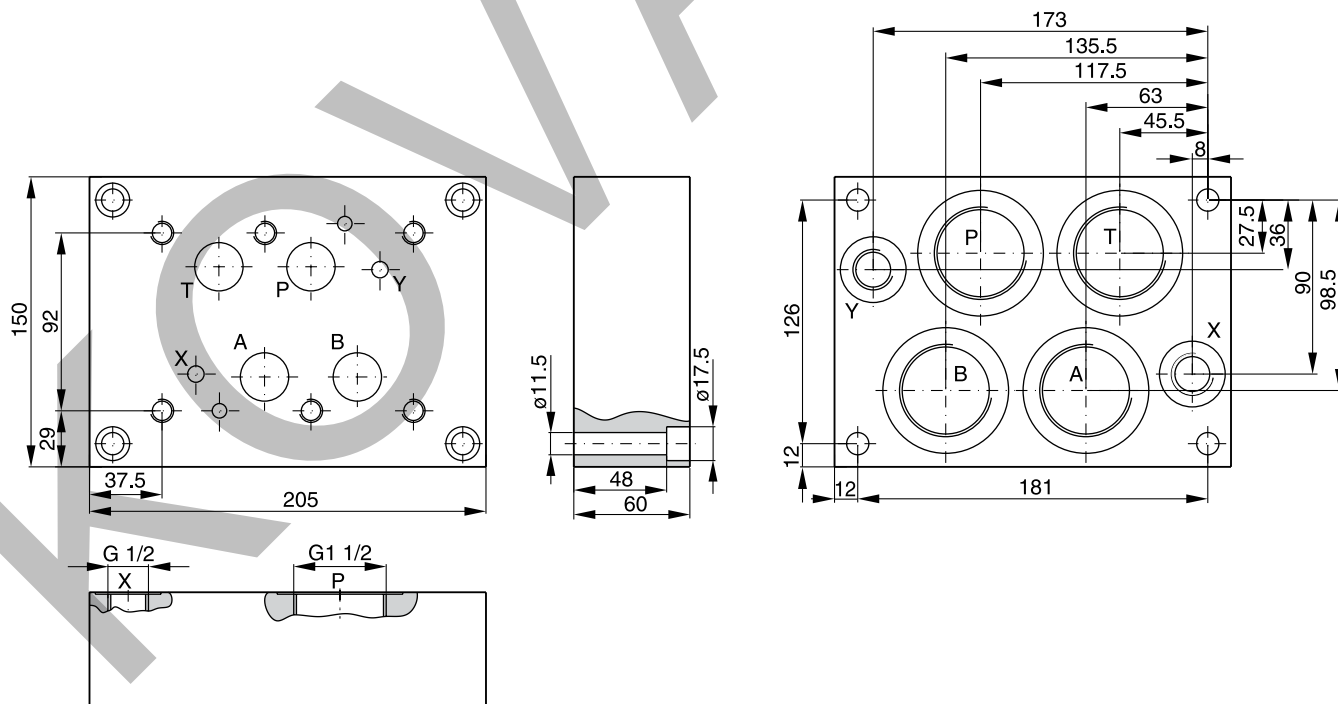
**Položky označené tučně**  
jsou ihned k dodání.



## Velikost ventilu DIN NG16, CETOP 07, NFPA D07



## Velikost ventilu DIN NG25, CETOP 08, NFPA D08



**Položky označené tučně**  
jsou ihned k dodání.

