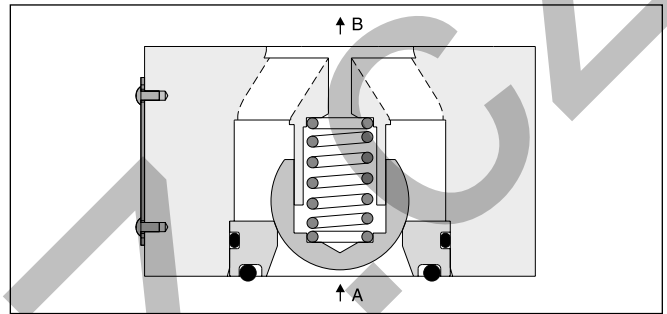
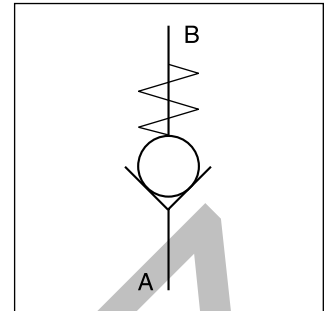


Direct operated check valves series C5V provide free flow in one direction and block the flow in the counter direction. The SAE flanges allow to mount the C5V directly on the pressure port of pumps for protection against pressure shocks from the system.

Features

- Direct operated check valve
- SAE61 and SAE62 flange
- 4 sizes (SAE ¾", 1", 1¼", 1½")
- 3 springs
- 5 options for body sealing

**Ordering Code**

C5V						B			
Direct operated check valve		Nominal size	Flange	Body sealing	Cracking pressure	Design series	Seals	Options	
Code	Port size							Code	Options
06	SAE ¾"							omit	Standard
08	SAE 1"							019 ²⁾	M14 mounting screws
10	SAE 1¼"								
12	SAE 1½"								
Code	Flange							Code	Seals
3	SAE61							1	NBR
6	SAE62							5	FPM
Code	Body sealing							Code	Cracking pressure
1	Sealing for port A							0	0.5 bar
2 ¹⁾	Sealing for port A and X							1	1.0 bar
3	Without sealing							2	2.0 bar
4	Sealing for port B								
5	Sealing for port A and B								

¹⁾ For combination with R5U unloading valve (SAE61 only)

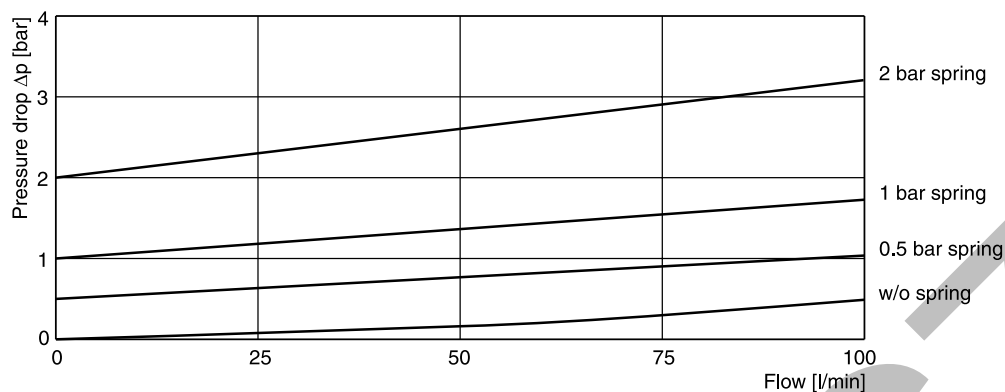
²⁾ Only for C5V10-6 (SAE62)

Technical Data

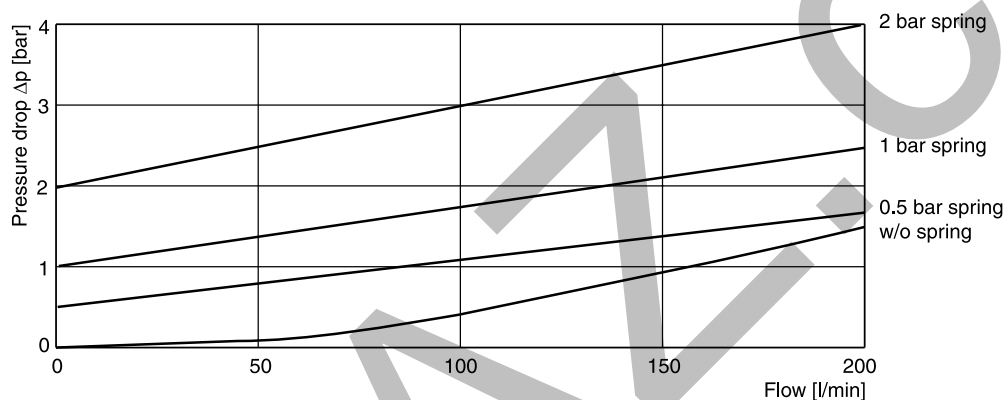
Series C5V

General							
Size			06 (¾")	08 (1")	10 (1¼")	12 (1½")	
Mounting			2-port inline flange (SAE61 and 62)				
Mounting position			unrestricted				
Ambient temperature			[°C]	-20...+60			
MTTF _D value			[years]	150			
Weight			[kg]	0.6	0.9	1.3	1.8
Hydraulic							
Max. operating pressure		SAE61	[bar]	350	350	280	210
		SAE62	[bar]	420	420	420	420
Nominal flow			[l/min]	100	200	400	750
Fluid				Hydraulic oil according to DIN 51524			
Fluid temperature				[°C]	-20...+70 (NBR: -25...+70)		
Viscosity	permitted	[cSt]	[mm²/s]	20...400			
	recommended	[cSt]	[mm²/s]	30...80			
Filtration				ISO 4406 (1999): 18/16/13			

C5V06



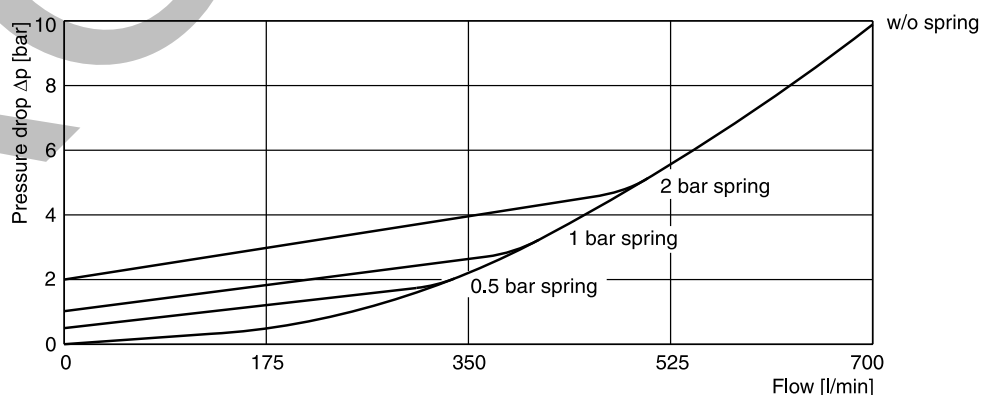
C5V08



C5V10

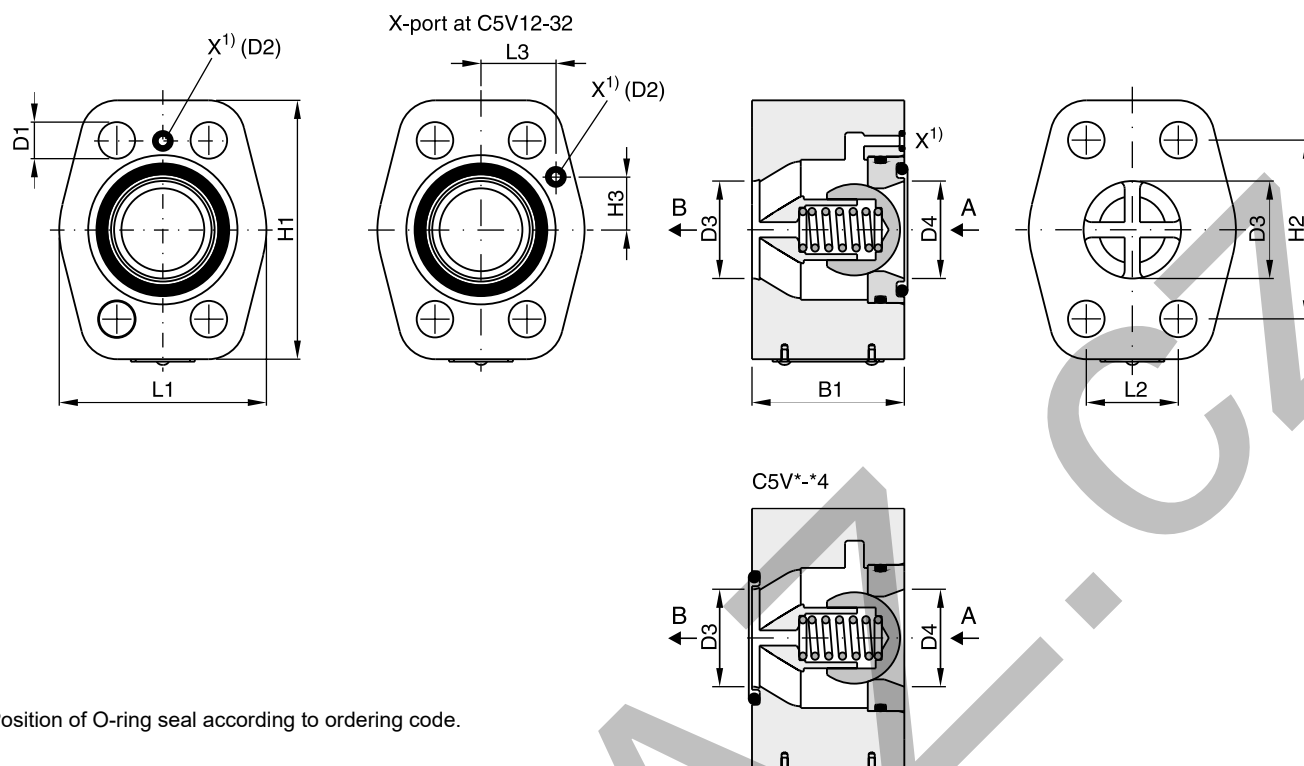


C5V12



All characteristic curves measured with HLP46 at 50 °C.

C5V UK.INDD 02.08.22



Position of O-ring seal according to ordering code.

Seal kits

NG	NBR	FPM
06	S26-75409-0	S26-75409-5
08	S26-75410-0	S26-75410-5
10	S26-75411-0	S26-75411-5
12	S26-75412-0	S26-75412-5

Series	Nominal Size		L1	L2	L3	H1	H2	H3	B1	D1	D2	D3 + 0.8	D4
C5V06	3/4"	SAE61	48	22.2	—	64	47.6	—	45	10.5	Ø3	19	19
		SAE62	48	23.8	—	64	50.8	—	45	10.5	—	19	19
C5V08	1"	SAE61	60	26.2	—	74	52.4	—	45	10.5	Ø3	25	25
		SAE62	60	27.8	—	74	57.2	—	45	12.5	—	25	25
C5V10	1 1/4"	SAE61	68	30.2	—	85	58.7	—	50	12.5	Ø3	32	32
		SAE62	68	31.8	—	85	66.7	—	50	13.5 ²⁾	—	32	32
C5V12	1 1/2"	SAE61	80	35.7	27.2	104	69.8	22.4	50	13.5	Ø3	42	38
		SAE62	80	36.5	27.2	104	79.4	22.4	50	17	—	42	38

¹⁾ X1 port for C5V*32* (for use with unloading valve R5U).

²⁾ D1 = 15 at option code 019 for M14 mounting screws.