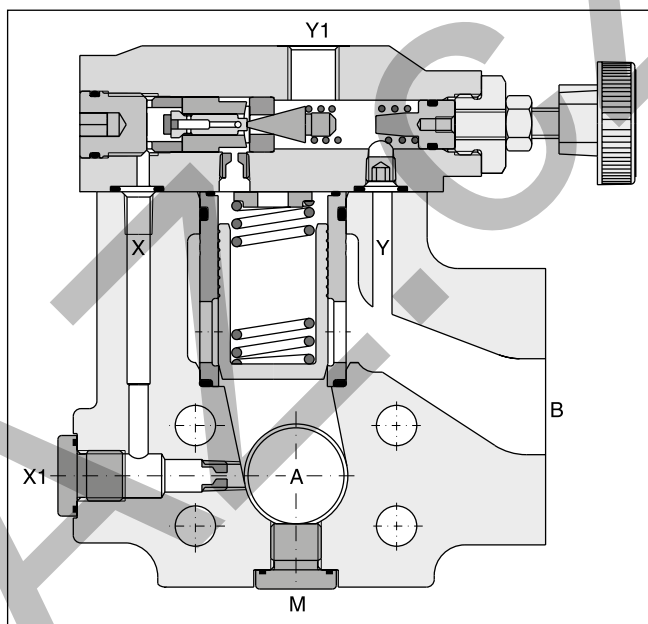
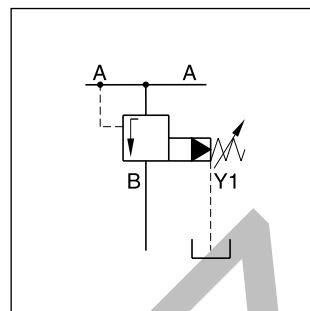


Pilot operated sequence valves series R5S have a similar design to the subplate mounted R4S series. The SAE flanges allow to mount the valve directly on the inlet flanges of actuators or outlet flanges of pumps to achieve a very compact design.

**Features**

- Pilot operated with manual adjustment
- 3-port body with SAE61 flange
- 3 sizes (SAE ¾", 1", 1¼")
- 3 pressure stages
- 2 adjustment modes
  - Hand knob
  - Acorn nut with lead seal
- Optional with vent function (on request)

**Ordering code****9**

<b>R5S</b>		<b>—</b>	<b>9</b>			<b>6</b>	<b>A</b>		<b>152</b>
Pressure sequence valve	Nominal size	SAE61 interface	3-port body (Y1, M = G¼")	Pressure stages	Adjust- ment	External drain from Y1 port	Design series	Seals	3-port body with metric threads

Code	Port size
06	SAE ¾"
08	SAE 1"
10	SAE 1¼"

SAE 61		
Code	Size	Max. pressure [bar]
4	10	280
5	06/08	350

Code	Pressure stages
1	up to 105 bar
3	up to 210 bar
5 <sup>1)</sup>	up to 350 bar

Code	Seals
1	NBR
5	FPM

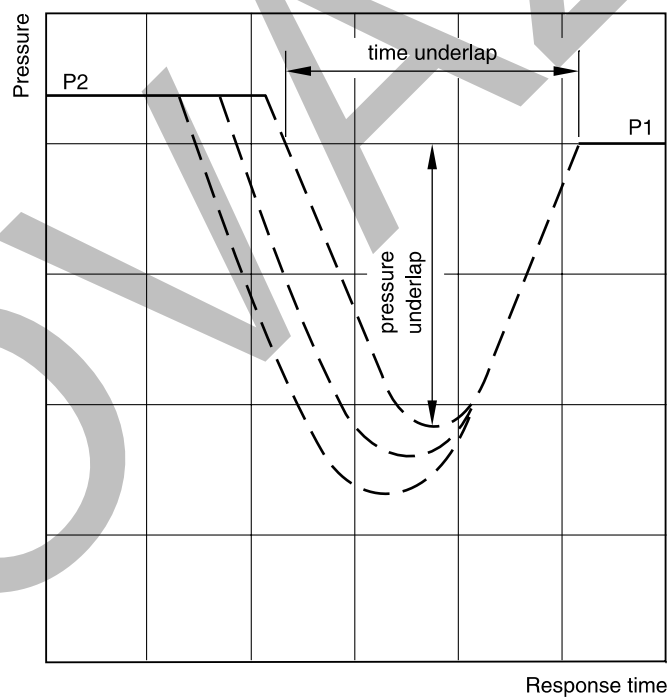
Code	Adjustment
1	Hand knob
3	Acorn nut with lead seal

Further options on request

## Technical data

General					
Size		06 (¾")		08 (1")	10 (1¼")
Mounting		Flanged according to SAE61 unrestricted			
Mounting position					
Ambient temperature		[°C]	-20...+60		
MTTF <sub>D</sub> value		[years]	75		
Weight		[kg]	3.6	4.6	5.2
Hydraulic					
Max. operating pressure		[bar]	350 30		
Ports A, B					
Ports Y, Y1					
Pressure stages		[bar]	105, 210, 350		
Nominal flow		[l/min]	90	300	600
Fluid		Hydraulic oil according to DIN 51524			
Fluid temperature		[°C]	-20...+70 (NBR: -25...+70)		
Viscosity	permitted	[cSt] / [mm²/s]	20 ... 400		
	recommended	[cSt] / [mm²/s]	30...80		
Filtration		ISO 4406 (1999): 18/16/13			

## Typical pressure characteristics at closing point



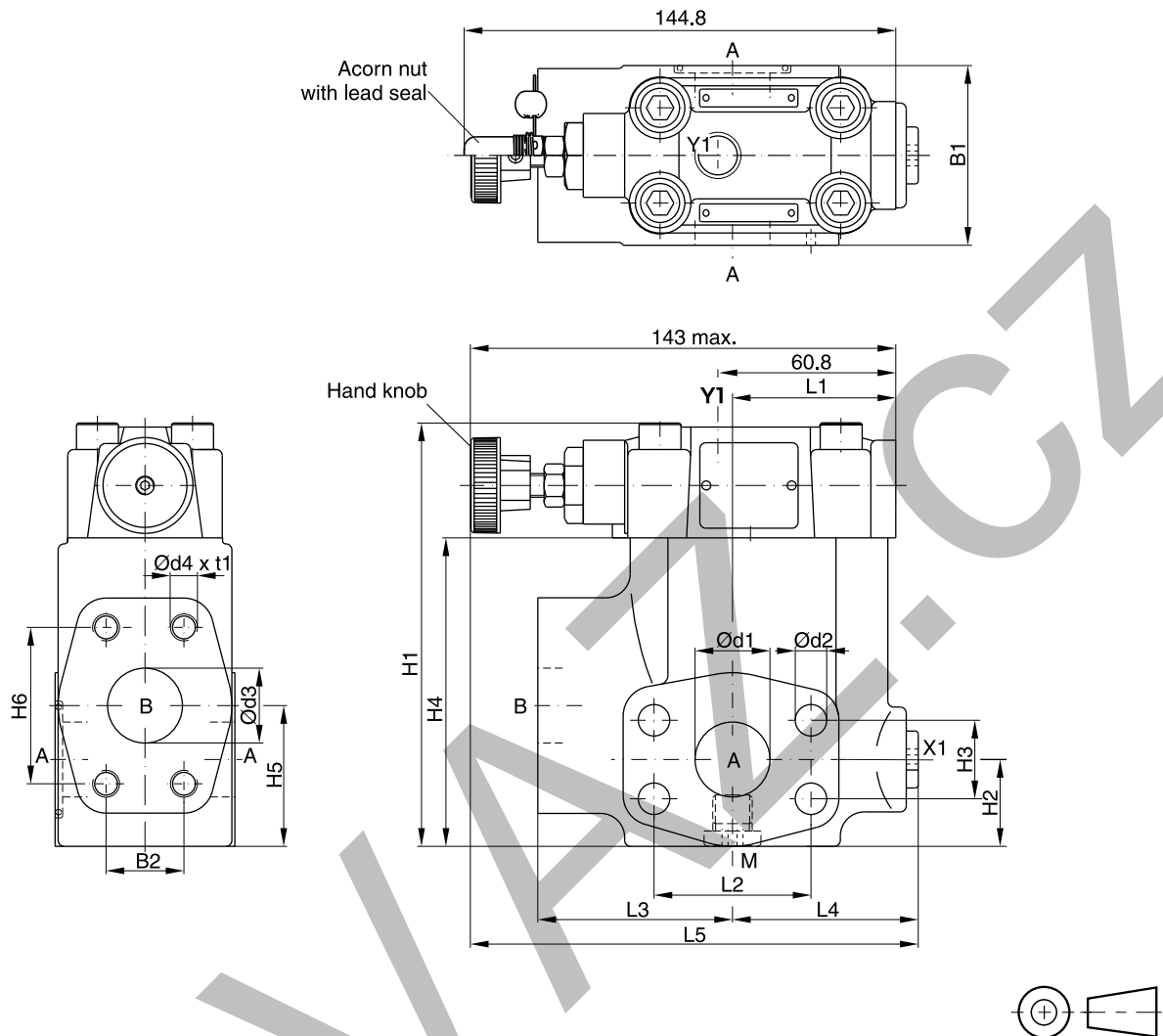
P1 = setting pressure  
P2 = operating pressure

Time and pressure underlap depend on the characteristics of the specific system.

<sup>1)</sup> R5S10-495 up to 280 bar.

# Dimensions

## Pilot Operated Sequence Valve Series R5S



### SAE61

Seal kits		
NG	NBR	FPM
06	S16-91850-0	S16-91850-5
08	S16-91851-0	S16-91851-5
10	S16-91852-0	S16-91852-5

NG	B1	B2	H1	H2	H3	H4	H5	H6	L1	L2	L3	L4	L5	d1	d2	d3	d4 (option 152)	t1
06	60	22.2	119	29.5	22.2	81	41	47.6	50.3	47.6	63	60	152	19	10.5	19	3/8"-16 UNC (M10)	20
08	60	26.2	141	30.5	26.2	103	47	52.4	55.8	52.4	65	62	149	25	10.5	25	3/8"-16 UNC (M10)	23
10	75	30.2	151	37.5	30.2	113	65	58.7	57.8	58.7	61	68	150.5	32	12.5	30	7/16"-14 UNC (M12)	22

Port	Function	Port size		
		R5S06	R5S08	R5S10
A (2)	Pressure	¾" SAE61	1" SAE61	1¼" SAE61
B	Secondary port	¾" SAE61	1" SAE61	1¼" SAE61
X1	External pilot port <sup>1)</sup>	G¼"	G¼"	G¼"
Y1	External drain	G¼"	G¼"	G¼"
M	Pressure gauge	G¼"	G¼"	G¼"

<sup>1)</sup> Closed when supplied.