

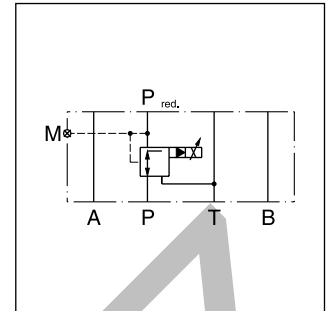
Proportional pressure reducing valves series PRPM keep a constant pressure p_{red} on the secondary side – independent of pressure fluctuations on the primary side. The integrated pressure relief function obviates the need for an additional pressure relief valve on the secondary side and reliefs to tank, if the reduced pressure rises above the setting pressure.

The proportional pressure reducing valve reduces the pressure in output port p_{red} in proportion to the solenoid current. The PRPM works practically independent of the inlet pressure. In non-activated mode, the connection to the tank is fully open with a min. pressure corresponding to the spring force.

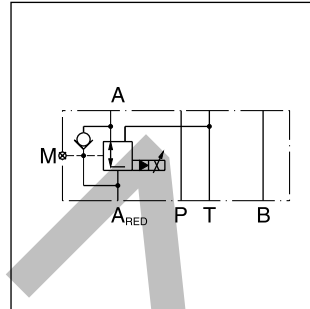
The gauge port is connected to the secondary side. Types A and B have an integrated bypass check valve. The PRPM provides optimum performance in combination with a digital amplifier module PCD00A-400.



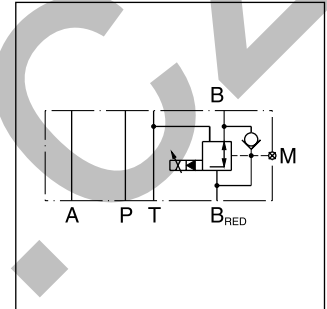
PRPM2PP



PRPM*PP

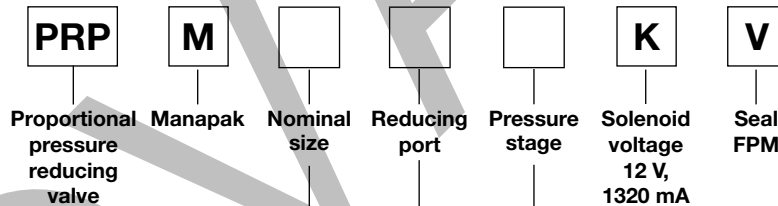


PRPM*AA



PRPM*BB

Ordering code



Code	Nominal size
2	NG06
3	NG10

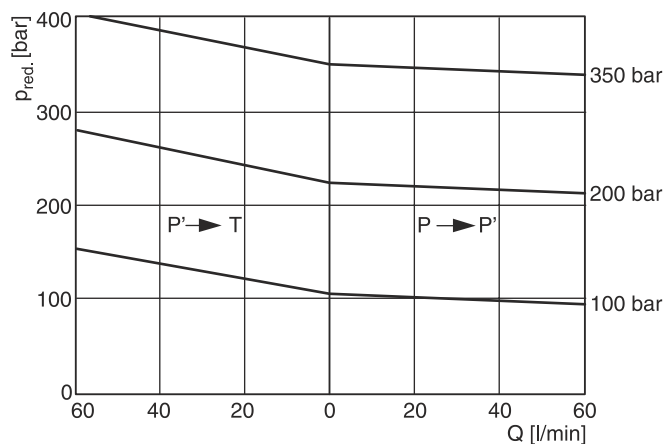
Code	Port
AA	A
BB	B
PP	P

Code	Pressure stage [bar]
10	100
20	200
35	350

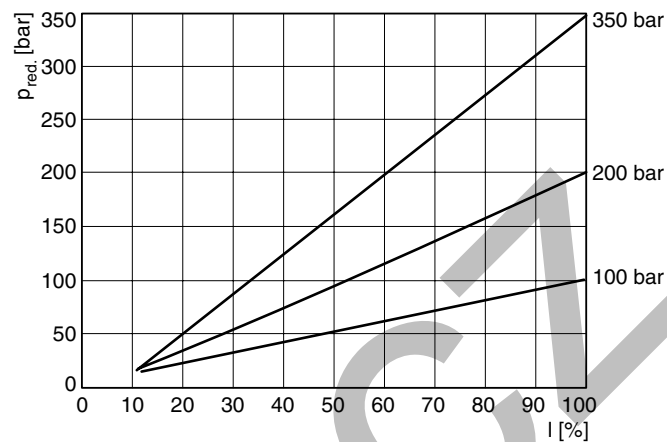
Technical Data

General			
Design		Pilot operated proportional pressure reducing valve	
Construction		Sandwich type	
Operation		Proportional solenoid	
Size		NG06	NG10
Mounting interface		ISO 4401	
Mounting position		unrestricted	
Ambient temperature		[°C]	-20 ... +60
MTTF _D value		[years]	75
Weight		[kg]	2.03.2
Hydraulic			
Fluid		Hydraulic oil according to DIN 51524	
Fluid temperature		[°C]	-20 ... +70
Viscosity, permitted recommended	[cSt] / [mm²/s]	20 ... 400	
	[cSt] / [mm²/s]	30 ... 80	
Max. operating pressure		[bar]	350
Reduced nom. pressure		[bar]	100; 200; 350
Max. flow		[l/min]	6060
Pilot flow		see performance curves	
Filtration		ISO 4406 (1999); 18/16/13	
Resolution		[mA]	1 mA
Repeatability		[%]	≤1 (with optimal dither signal)
Hysteresis		[%]	≤4 (with optimal dither signal)
Electrical			
Solenoid		Proportional solenoid, wet-pin push type, pressure tight	
Duty ratio		[%]	100 ED
Protection class		IP65 in accordance with EN 60529 (with correctly mounted plug-in connector)	
Supply voltage		[V]	12 (1320 mA)
Solenoid connection		Connector as per EN 175301-803	
Amplifier		PCD00A-400	

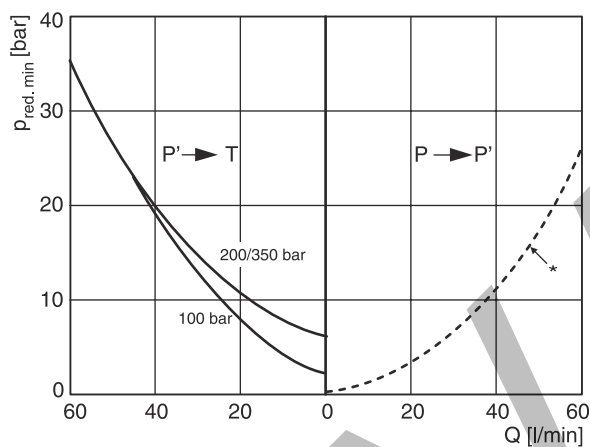
Pressure/flow NG06/NG10



Pressure/adjustment at $Q=0$ l/min (static)

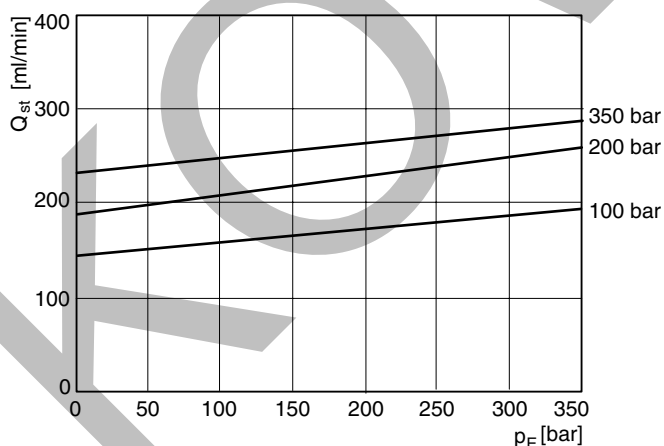


Pressure/flow (min. adjustable)

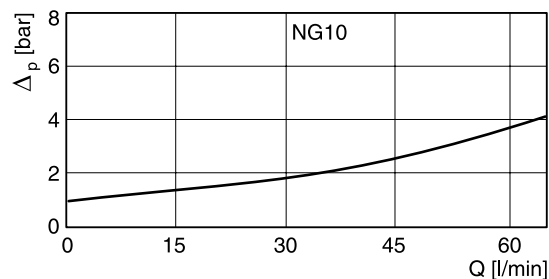
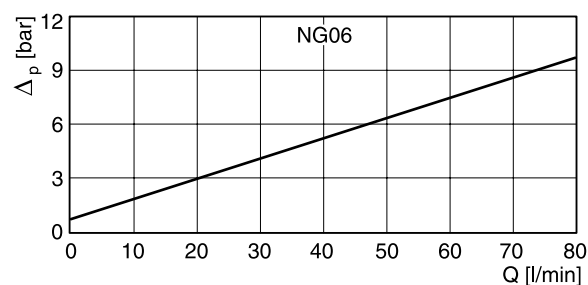


* Consumption resistance depends on system.

Pilot flow NG06/NG10



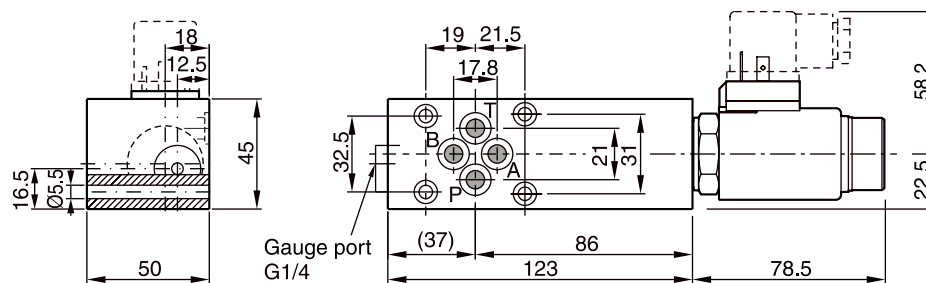
Pressure drop/flow over check valve



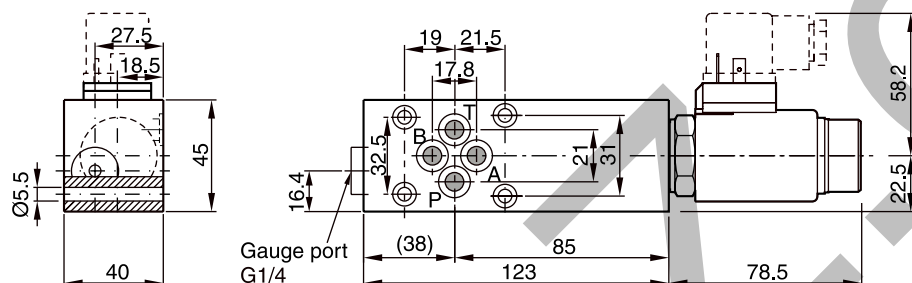
All characteristic curves measured with HLP46 at 50 °C.

Dimensions

PRPM2AA*, BB**

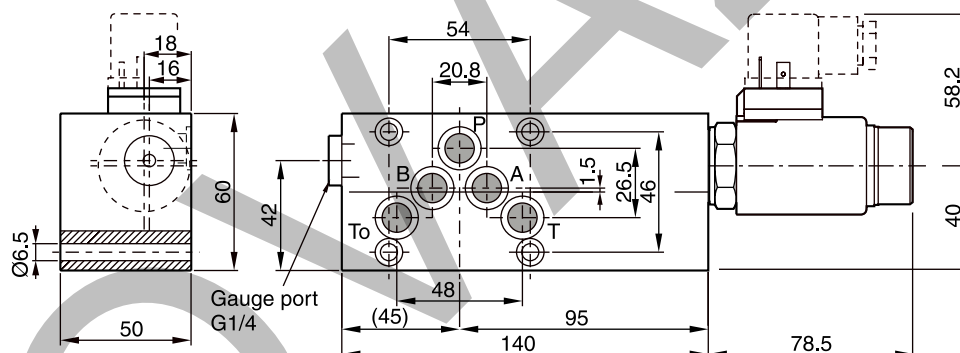


PRPM2PP*



7

PRPM3AA*, BB**



PRPM3PP*

