

CV

Check  
Valves

SH

Shuttle  
Valves

LM

Load/Motor  
Controls

FC

Flow  
Controls

PC

Pressure  
Controls

LE

Logic  
Elements

DC

Directional  
Controls

MV

Manual  
Valves

SV

Solenoid  
Valves

PV

Proportional  
Valves

CE

Coils &  
Electronics

BC

Bodies &  
Cavities

TD

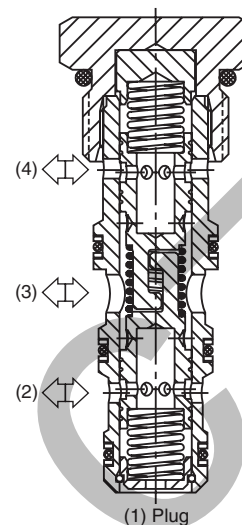
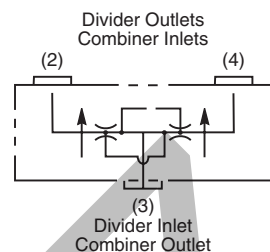
Technical  
Data

## General Description

Spool Type, Flow Divider/Combiner Valve. For additional information see Technical Tips on pages FC1-FC4.

## Features

- Interlocking spools for equal control dividing or combining
- Range of flow settings available for optimising control
- Pressure compensated control in both directions
- 50/50 ratio standard, other ratios available on request
- Commonly used for differential lock in transmission applications
- Hardened working parts for maximum durability
- All external parts zinc plated

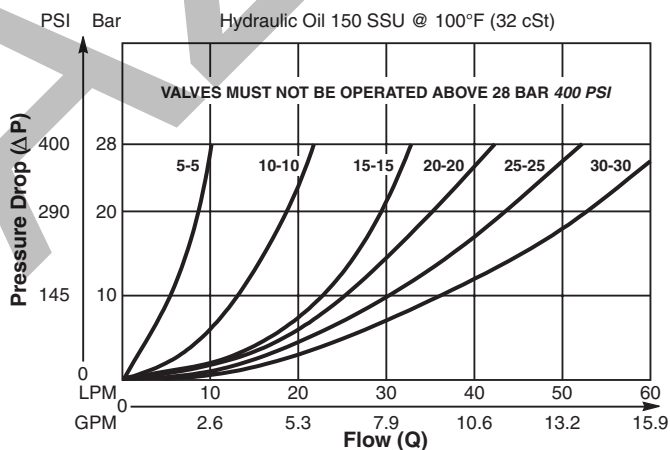


## Specifications

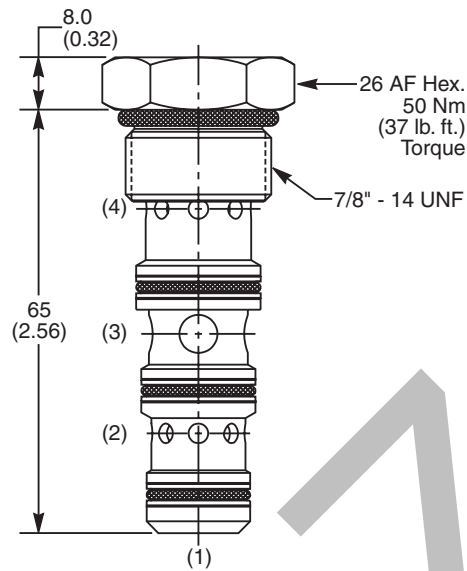
<b>Rated Flow</b>	60 LPM (16 GPM)
<b>Maximum Inlet Pressure</b>	420 Bar (6000 PSI)
<b>Flow Rating and Ratio</b>	See Ordering Information
<b>Accuracy Per Leg</b>	± 10%
<b>Cartridge Material</b>	All parts steel. All operating parts hardened steel.
<b>Operating Temp. Range/Seals</b>	-34°C to +121°C (Nitrile) (-30°F to +250°F) -26°C to +204°C (Fluorocarbon) (-15°F to +400°F)
<b>Fluid Compatibility/Viscosity</b>	Mineral-based or synthetic with lubricating properties at viscosities of 45 to 2000 SSU (6 to 420 cSt)
<b>Filtration</b>	ISO-4406 18/16/13, SAE Class 4
<b>Approx. Weight</b>	.12 kg (0.26 lbs.)
<b>Cavity</b>	C10-4 (See BC Section for more details)
<b>Form Tool</b>	Rougher NFT10-4R Finisher NFT10-4F

## Performance Curve

Pressure Drop vs. Flow (Through cartridge only)



**Dimensions**    Millimeters (Inches)



**Ordering Information**

**L04A3** — ☐ — ☐ — ☐ — ☐

**10 Size**      **Flow Rating**      **Seals**      **Body Material**      **Port Size**  
**Flow Divider/**      **and Ratio**  
**Combiner Valve**

Code	Total Flow Rating - Port 3 (Flow Ratio)
<b>5-5</b>	6-10 LPM (1.6-2.6 GPM) (50/50 Ratio)
<b>10-10</b>	8-20 LPM (2.1-5.3 GPM) (50/50 Ratio)
<b>15-15</b>	10-30 LPM (2.6-7.9 GPM) (50/50 Ratio)
<b>20-20</b>	12-40 LPM (3.2-10.6 GPM) (50/50 Ratio)
<b>25-25</b>	13-50 LPM (3.4-13.2 GPM) (50/50 Ratio)
<b>30-30</b>	14-60 LPM (3.7-15.9 GPM) (50/50 Ratio)

Other ratios and ratings available on request.

Code	Seals / Kit. No.
<b>N</b>	Nitrile, Buna-N (Std.) / (SK30506N-1)
<b>V</b>	Fluorocarbon / (SK30506V-1)

Code	Body Material
<b>Omit</b>	Steel
<b>A</b>	Aluminum

Code	Port Size	Body Part No.
<b>Omit</b>	<b>Cartridge Only</b>	
<b>6T</b>	SAE-6	(B10-4-*6T)
<b>8T</b>	SAE-8	(B10-4-*8T)

\* Add "A" for aluminum, omit for steel.