

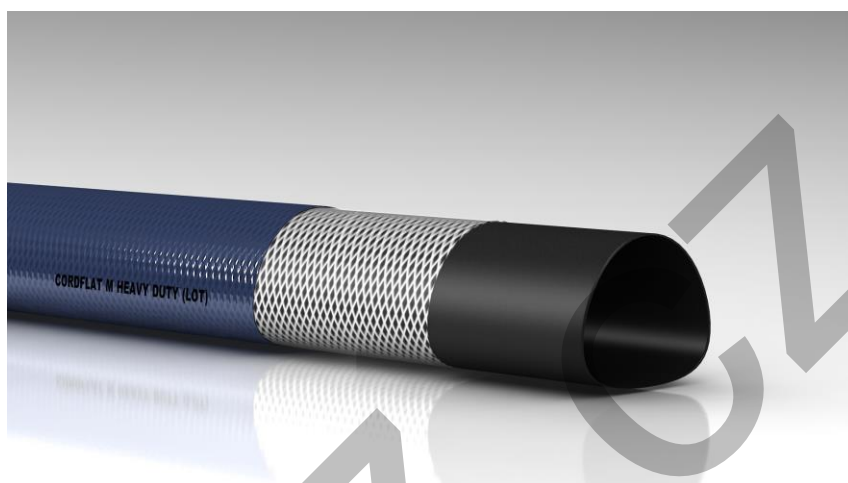
# FLATCONN PVC M

[EN] for standard duty discharge of water in agriculture and industry.

[DE] zur beförderung von wasser/abwässern, leichte chemikalien und Verschiedene flüssigkeiten, in landwirtschaften und industrien.

[ES] para suministro de uso standard de agua, productos químicos y Otros líquidos en agricultura e industria

[FR] refoulement d'eau, des produits chimiques peu agressifs et d'autres liquides dans l'industrie et l'agriculture.



[EN] **Construction:** flexible pvc/nbr lining. High tensile synthetic textile.

**Cover:** light chemicals and weather resistant pvc outer cover.

[DE] **Konstruktion:** flexible pvc/nbr seele. Hochfestes synthetisches textildgewebe.





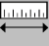
**Decke:** witterungs- und leichte chemikalien beständige pvc decke.

[ES] **Construcción:** manguera plana en pvc/nbr para suministro. Inserciones textiles con alta resistencia.

**Cobertura:** externa en pvc, resistente a los agentes atmosféricos y a productos químicos ligeros.

[FR] **Construction:** tube lisse et flexible en pvc/nbr. **Insertion:** textile haute tenacite.

**Revetement:** surface lisse resistente aux agents atmospheriques et a la plupart des produits chimiques

				
mm	bar	bar	gr/mt	mt
32	8	20	220	50/100
38	7	18	260	50/100
40	7	18	280	50/100
45	7	18	310	50/100
50	7	18	360	50/100
60	6	16	430	50/100
63	6	16	440	50/100
70	6	16	470	50/100
76	6	16	520	50/100
80	6	16	560	50/100
90	6	14	640	50/100
100	4	14	760	50/100
150	3,5	9	1280	50/100
200	2,5	7	2000	50/100

STC – hose clamp with bolt  
BANDI BLOCK – tightening torque

-5°C / +60°C  
+23°F / +140°F

**NORM.:** ISO 1307