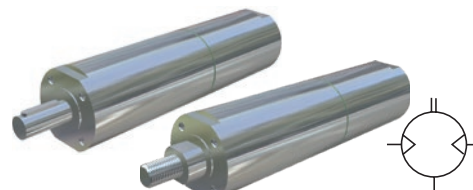


P1VAS Stainless Steel Vane Air Motors with Integrated Planetary Gear boxes

Note: All technical data are based on a working pressure of 6 bar and with oil lubrication. With oil free operation performances are reduced by 10 to 20%. Speed tolerance accuracy in between clock and anti clockwise directions is $\pm 10\%$.

Note! Inlet and exhaust air flows are critical for reaching the best performances.



Data for Reversible Air Motor Power 200 watts, with Keyed Shaft

Max power	Free speed	No-minal speed	Nominal torque	Min starting torque	Stall torque	Max adm torque	Air consumption	Supply/ Exhaust		Min pipe	Weight	ATEX		Rotation	Vanne Option	Order Code
[watt]	[rpm]	[rpm]		[Nm]	[Nm]	[Nm]	[m3/min]			[mm]	[kg]					
200	16000	8000	0,24	0,35	0,45	*	0,37	G1/8	G1/4	10	10	0,70	T6 T80°C	L & R	0, C, Z	P1VAS020A0G00
200	4600	2300	0,8	1,20	1,50	*	0,37	G1/8	G1/4	10	10	0,75	T4 T130°C	L & R	0, C, Z	P1VAS020A0460
200	2400	1200	1,6	2,40	3,00	*	0,37	G1/8	G1/4	10	10	0,75	T4 T130°C	L & R	0, C, Z	P1VAS020A0240
200	1400	700	2,7	4,10	5,10	*	0,37	G1/8	G1/4	10	10	0,85	T4 T130°C	L & R	0, C, Z	P1VAS020A0140
200	700	350	5,4	8,20	10,30	*	0,37	G1/8	G1/4	10	10	0,85	T6 T80°C	L & R	0, C, Z	P1VAS020A0070
200	360	180	10,6	15,90	**	20,00	0,37	G1/8	G1/4	10	10	0,85	T6 T80°C	L & R	0, C, Z	P1VAS020A0036
100	180	90	10,5	15,00	**	20,00	0,27	G1/8	G1/4	10	10	0,85	T6 T80°C	L & R	0, C, Z	P1VAS020A0018
180	50	**	**	**	**	20,00	0,34	G1/8	G1/4	10	10	0,95	T6 T80°C	L & R	0, C, Z	P1VAS020A0005

With Treaded Shaft

200	16000	8000	0,24	0,35	0,45	*	0,37	G1/8	G1/4 10	10	0,70	T6 T80°C	-	0, C, Z	P1VAS020D0G00
200	4600	2300	0,8	1,20	1,50	*	0,37	G1/8	G1/4 10	10	0,75	T4 T130°C	-	0, C, Z	P1VAS020D0460
200	2400	1200	1,6	2,40	3,00	*	0,37	G1/8	G1/4 10	10	0,75	T4 T130°C	-	0, C, Z	P1VAS020D0240
200	1400	700	2,7	4,10	5,10	*	0,37	G1/8	G1/4 10	10	0,85	T4 T130°C	-	0, C, Z	P1VAS020D0140
200	700	350	5,4	8,20	10,30	*	0,37	G1/8	G1/4 10	10	0,85	T6 T80°C	-	0, C, Z	P1VAS020D0070
200	360	180	10,6	15,90	**	20,00	0,37	G1/8	G1/4 10	10	0,85	T6 T80°C	-	0, C, Z	P1VAS020D0036
100	180	90	10,5	15,00	**	20,00	0,27	G1/8	G1/4 10	10	0,85	T6 T80°C	-	0, C, Z	P1VAS020D0018
180	50	**	**	**	**	20,00	0,34	G1/8	G1/4 10	10	0,95	T6 T80°C	-	0, C, Z	P1VAS020D0005

Max. adm torque is restriction from the gear box Details on page 15

Data for Reversible Air Motor Power 300 watts, with Keyed Shaft

Max power	Free speed	No-minal speed	Nominal torque	Min starting torque	Stall torque	Max adm torque	Air consumption	Supply/Exhaust		Min pipe	Weight	ATEX		Rotation	Vanne Option	Order Code	
[watt]	[rpm]	[rpm]		[Nm]	[Nm]	[Nm]	[m3/min]			[mm]	[kg]						
300	14500	7250	0,40	0,60	0,76	*	0,47	G1/8	G1/4	10	10	0,70	T6	T80°C	L & R	0, C, Z	P1VAS030A0E50
300	4600	2300	1,20	1,90	2,20	*	0,47	G1/8	G1/4	10	10	0,75	T4	T130°C	L & R	0, C, Z	P1VAS030A0460
300	2400	1200	2,40	3,60	4,50	*	0,47	G1/8	G1/4	10	10	0,75	T4	T130°C	L & R	0, C, Z	P1VAS030A0240
300	1230	615	4,65	6,95	8,80	*	0,47	G1/8	G1/4	10	10	0,85	T4	T130°C	L & R	0, C, Z	P1VAS030A0123
300	700	350	8,15	12,25	15,50	*	0,47	G1/8	G1/4	10	10	0,85	T6	T80°C	L & R	0, C, Z	P1VAS030A0070
300	360	180	15,90	23,80	30,20	*	0,47	G1/8	G1/4	10	10	0,85	T6	T80°C	L & R	0, C, Z	P1VAS030A0036
130	180	90	13,80	21,00	26,20	*	0,28	G1/8	G1/4	10	10	0,85	T6	T80°C	L & R	0, C, Z	P1VAS030A0018
300	100	**	**	**	**	36,00	0,47	G1/8	G1/4	10	10	0,95	T6	T80°C	L & R	0, C, Z	P1VAS030A0010
280	50	**	**	**	**	36,00	0,47	G1/4	G1/4	10	10	1,25	T6	T80°C	L & R	0, C, Z	P1VAS030A0005

With Treaded Shaft

300	14500	7250	0,40	0,60	0,76	*	0,47	G1/4	G1/4 10	10	1,00	T6 T80°C	-	0, C, Z	P1VAS030D0E50
300	4600	2300	1,20	1,90	2,20	*	0,47	G1/4	G1/4 10	10	1,05	T3 T195°C	-	0, C, Z	P1VAS030D0460
300	2400	1200	2,40	3,60	4,50	*	0,47	G1/4	G1/4 10	10	1,05	T4 T130°C	-	0, C, Z	P1VAS030D0240
300	1230	615	4,65	6,95	8,80	*	0,47	G1/4	G1/4 10	10	1,10	T4 T130°C	-	0, C, Z	P1VAS030D0123
300	700	350	8,15	12,25	15,50	*	0,47	G1/4	G1/4 10	10	1,15	T6 T80°C	-	0, C, Z	P1VAS030D0070
300	360	180	15,90	23,80	30,20	*	0,47	G1/4	G1/4 10	10	1,15	T6 T80°C	-	0, C, Z	P1VAS030D0036
130	180	90	13,80	21,00	26,20	*	0,28	G1/4	G1/4 10	10	1,15	T6 T80°C	-	0, C, Z	P1VAS030D0018
300	100	**	**	**	**	36,00	0,47	G1/4	G1/4 10	10	1,25	T6 T80°C	-	0, C, Z	P1VAS030D0010
280	50	**	**	**	**	36,00	0,47	G1/4	G1/4 10	10	1,25	T6 T80°C	-	0, C, Z	P1VAS030D0005

Max. adm torque is restriction from the gear box Details on page 15

Note:

air motor rotation with threaded shaft may be reversed, but when operated anticlockwise, there is a risk that the driven unit may disconnect if it is not locked properly.

* Maximum admissible torque

No values as these motors can not achieve the maximum gear box torque. Stall torque is the max they can achieve.

**nominal speed, nominal torque, min starting torque, stall torque

No values as the motors can not reach these conditions, otherwise the maximum torque of the gearboxes will be exceeded.

Technical drawing of the P1V series vacuum pump assembly, showing various views and dimensions.

Top View (Left): Shows the air supply ports (D1) for right and left rotation, the exhaust air port (G1/4), and dimensions D2, D3, and 7.

Top View (Right): Shows the motor flange with dimensions C3, C2 h9, and C4. A detail view of the motor flange shows a diameter of $\phi 1.6$.

Front View (Center): Shows the main body of the pump with dimensions A1, A2, A3, A4 - Chucking range, B1 e8, B2 k6, B3 e8, C1, and C2. A detail view of the motor flange shows a diameter of $\phi 1.6$.

Side View (Left): Shows the pump body with dimensions E1, E2, E3, and B3 e8.

Side View (Right): Shows the pump body with dimensions E4 and $\phi 5.5$.

Bottom View (Left): Shows the bracket with dimensions 4.5, E5, 20, 30, 4.5, and $\phi 6.6$.

Bottom View (Right): Shows the bracket with dimensions F3, 30_{0.2}, F1, and F2.

Motor and Silencer: The motor is labeled "26 Motor 200 w" and "27 Motor 300 w". A detail view of the motor flange shows a diameter of $\phi 1.6$. A detail view of the silencer shows a diameter of $\phi 5.5$.

Dimensions:

- A1, A2, A3, A4 - Chucking range
- B1 e8, B2 k6, B3 e8
- C1, C2, C3, C4
- D1, D2, D3
- E1, E2, E3, E4
- F1, F2, F3
- G1/4
- H1/4
- I1/4
- J1/4
- K1/4
- L1/4
- M1/4
- N1/4
- O1/4
- P1/4
- Q1/4
- R1/4
- S1/4
- T1/4
- U1/4
- V1/4
- W1/4
- X1/4
- Y1/4
- Z1/4

A1	A2	A3	A4	B1	B2	B3	C1	C2	C3	C4	Order code			
152,5	23	128,5	65	38	10	20	11,2	3	30	M4	P1VAS020A*G00	P1VAS020A*460	P1VAS020A*240	
168	23	144,5	81	38	10	20	11,2	3	30	M4	P1VAS020A*140	P1VAS020A*070	P1VAS020A*036	P1VAS020A*018
184,5	23	160,5	97	38	10	20	11,2	3	30	M4	P1VAS020A*005			
D1	D2	D3	B3	E1	E2	E3	E4	E5	F1	F2	F3	Order code		
G1/8	8	19	20	5	5,8	60	50	17	45	55	47	P1VAS020A*G00	P1VAS020A*460	P1VAS020A*240
G1/8	8	19	20	5	5,8	60	50	17	45	55	47	P1VAS020A*140	P1VAS020A*070	P1VAS020A*036
G1/8	8	19	20	5	5,8	60	50	17	45	55	47	P1VAS020A*005		

A1	A2	A3	A4	B1	B2	B3	C1	C2	C3	C4	Order code			
171	27	143	66	42	12	24	13,5	4	34	M5		P1VAS030A*E50	P1VAS030A*460	P1VAS030A*240
187	27	159	83	42	12	24	13,5	4	34	M5		P1VAS030A*123		
191	30	159	83	42	14	24	16	5	34	M5		P1VAS030A*070	P1VAS030A*036	P1VAS030A*018
196	30	164	83	42	14	24	16	5	34	M5		P1VAS030A*010	P1VAS030A*005	
D1	D2	D3	B3	E1	E2	E3	E4	E5	F1	F2	F3	Order code		
G1/4	11	20	20	5	6,8	60	50	17	45	55	47	P1VAS030A*E50	P1VAS030A*460	P1VAS030A*240
G1/4	11	20	20	5	6,8	60	50	17	45	55	47	P1VAS030A*123		
G1/4	11	20	24	6	6,8	65	55	21	50	60	48	P1VAS030A*070	P1VAS030A*036	P1VAS030A*018
G1/4	11	20	24	6	6,8	65	55	21	50	60	48	P1VAS030A*010	P1VAS030A*005	

