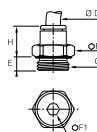


## 6901 Stud Fitting, Male BSPP and Metric Thread

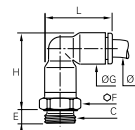
FDA chemical Nickel-plated brass, EPDM



ØD	C		E	F	F1	H	Kg
4	M5x0.8	<b>6901 04 19</b>	3	8	2.5	14	0.003
	G1/8	<b>6901 04 10</b>	5.5	13	3	11.5	0.007
	G1/4	<b>6901 04 13</b>	5.5	16	3	10.5	0.011
6	M5x0.8	<b>6901 06 19</b>	3	11	2.5	16	0.005
	G1/8	<b>6901 06 10</b>	4.5	13	4	13	0.007
	G1/4	<b>6901 06 13</b>	5.5	16	4	12.5	0.011
8	G1/8	<b>6901 08 10</b>	4.5	13	5	20.5	0.011
	G1/4	<b>6901 08 13</b>	5.5	16	6	19.5	0.016
	G3/8	<b>6901 08 17</b>	5.5	20	6	18	0.022
10	G1/4	<b>6901 10 13</b>	5.5	16	7	23	0.018
	G3/8	<b>6901 10 17</b>	5.5	20	8	19.5	0.021
	G1/2	<b>6901 10 21</b>	7	24	8	18	0.033
12	G1/2	<b>6901 12 21</b>	7	24	10	22.5	0.035

## 6999 Stud Elbow, Male BSPP and Metric Thread

Bio-based polymer, FDA chemical Nickel-plated brass, EPDM

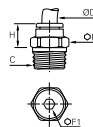


ØD	C		E	F	G	H	L	Kg
4	M5x0.8	<b>6999 04 19</b>	3.5	8	8.5	23	19	0.005
	G1/8	<b>6999 04 10</b>	4.5	13	8.5	22.5	19	0.009
	M5x0.8	<b>6999 06 19</b>	3.5	10	10.5	26.5	22.5	0.008
6	G1/8	<b>6999 06 10</b>	4.5	13	10.5	26.5	22.5	0.011
	G1/4	<b>6999 06 13</b>	5.5	16	10.5	26.5	22.5	0.016
	G1/8	<b>6999 08 10</b>	4.5	13	13.5	35	29.5	0.018
8	G1/4	<b>6999 08 13</b>	5.5	16	13.5	33	29.5	0.020
	G3/8	<b>6999 08 17</b>	5.5	20	13.5	33	29.5	0.028
10	G1/4	<b>6999 10 13</b>	5.5	16	16	40.5	34	0.029
	G3/8	<b>6999 10 17</b>	5.5	20	16	39	34	0.037
	G1/2	<b>6999 10 21</b>	7	24	16	39	34	0.042
12	G3/8	<b>6999 12 17</b>	5.5	20	19	42	40	0.040
	G1/2	<b>6999 12 21</b>	7	24	19	42	40	0.049

The body swivels for positioning purposes.

## 6905 Stud Fitting, Male BSPT Thread

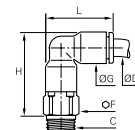
FDA chemical Nickel-plated brass, EPDM



ØD	C		F	F1	H	Kg
4	R1/8	<b>6905 04 10</b>	10	3	9.5	0.005
	R1/4	<b>6905 04 13</b>	14	3	6.5	0.012
6	R1/8	<b>6905 06 10</b>	10	4	11.5	0.005
	R1/4	<b>6905 06 13</b>	14	4	8.5	0.011
8	R1/8	<b>6905 08 10</b>	13	5	20	0.011
	R1/4	<b>6905 08 13</b>	14	6	17	0.014
10	R3/8	<b>6905 08 17</b>	17	6	13	0.021
	R1/4	<b>6905 10 13</b>	16	7	20	0.017
	R3/8	<b>6905 10 17</b>	17	8	16.5	0.019
12	R1/2	<b>6905 10 21</b>	21	8	14	0.037
	R3/8	<b>6905 12 17</b>	19	9	24	0.028
	R1/2	<b>6905 12 21</b>	21	10	19.5	0.036

## 6909 Stud Elbow, Male BSPT Thread

Bio-based polymer, FDA chemical Nickel-plated brass, EPDM

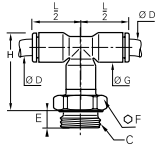


ØD	C		F	G	H	L	Kg
4	R1/8	<b>6909 04 10</b>	10	8.5	23	19	0.008
	R1/4	<b>6909 04 13</b>	14	8.5	23.5	19	0.018
6	R1/8	<b>6909 06 10</b>	10	10.5	27	22.5	0.010
	R1/4	<b>6909 06 13</b>	14	10.5	27.5	22.5	0.020
8	R1/8	<b>6909 08 10</b>	13	13.5	33.5	29.5	0.018
	R1/4	<b>6909 08 13</b>	14	13.5	32.5	29.5	0.022
10	R3/8	<b>6909 08 17</b>	17	13.5	33	29.5	0.032
	R1/4	<b>6909 10 13</b>	15	16	39.5	34	0.031
12	R3/8	<b>6909 10 17</b>	17	16	39.5	34	0.041
	R1/2	<b>6909 10 21</b>	21	16	39.5	34	0.060
12	R3/8	<b>6909 12 17</b>	19	19	45.5	40.5	0.051
	R1/2	<b>6909 12 21</b>	21	19	45.5	40.5	0.065

The body swivels for positioning purposes.

## 6998 Stud Branch Tee, Male BSPP and Metric Thread

Bio-based polymer, FDA chemical Nickel-plated brass, EPDM

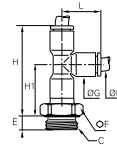


ØD	C		E	F	G	H	L/2	Kg
4	M5x0.8	<b>6998 04 19</b>	3.5	8	8.5	24	14	0.006
	G1/8	<b>6998 04 10</b>	5	13	8.5	22	14	0.009
	G1/4	<b>6998 04 13</b>	5.5	16	8.5	22	14	0.014
6	M5x0.8	<b>6998 06 19</b>	3.5	10	10.5	30	16	0.009
	G1/4	<b>6998 06 13</b>	5.5	16	10.5	29	16	0.016
8	G1/8	<b>6998 08 10</b>	4.5	13	13.5	38	23	0.019
	G1/4	<b>6998 10 13</b>	5.5	16	16	43	26.5	0.032
10	G3/8	<b>6998 10 17</b>	5.5	20	16	43	26.5	0.055
	G1/2	<b>6998 10 21</b>	7.5	24	16	43	26.5	0.051
12	G3/8	<b>6998 12 17</b>	5.5	20	19	45.5	31	0.042
	G1/2	<b>6998 12 21</b>	7	24	19	45.5	31	0.049

The body swivels for positioning purposes.

## 6993 Stud Run Tee, Male BSPP and Metric Thread

Bio-based polymer, FDA chemical Nickel-plated brass, EPDM

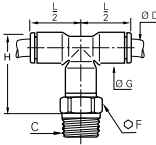


ØD	C		E	F	G	H	H1	L	Kg
4	M5x0.8	<b>6993 04 19</b>	3.5	8	8.5	32	19	14.5	0.006
	G1/8	<b>6993 04 10</b>	5	13	8.5	30	18	14.5	0.009
	G1/4	<b>6993 04 13</b>	5.5	16	8.5	30	18	14.5	0.014
6	M5x0.8	<b>6993 06 19</b>	3.5	10	10.5	39	23	17.5	0.009
	G1/4	<b>6993 06 13</b>	5.5	16	10.5	38	22	17.5	0.016
8	G1/8	<b>6993 08 10</b>	4.5	13	13.5	54	31	23	0.019
	G3/8	<b>6993 08 17</b>	5.5	20	13.5	52	29	23	0.030
10	G3/8	<b>6993 10 17</b>	5.5	20	16	61	35	26.5	0.055
	G1/2	<b>6993 10 21</b>	7.5	24	16	61	35	26.5	0.051
12	G3/8	<b>6993 12 17</b>	5.5	20	19	67	36	31	0.042
	G1/2	<b>6993 12 21</b>	7	24	19	67	36	31	0.049

The body swivels for positioning purposes.

## 6908 Stud Branch Tee, Male BSPT Thread

Bio-based polymer, FDA chemical Nickel-plated brass, EPDM

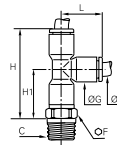


ØD	C		F	G	H	L/2	Kg
4	R1/8	<b>6908 04 10</b>	10	8.5	17	14	0.009
	R1/4	<b>6908 04 13</b>	14	8.5	17	14	0.020
6	R1/4	<b>6908 06 13</b>	14	10.5	23	16	0.011
	R1/8	<b>6908 08 10</b>	13	13.5	30	23	0.020
8	R1/4	<b>6908 08 13</b>	14	13.5	30	23	0.025
	R3/8	<b>6908 08 17</b>	17	13.5	30	23	0.036
	R1/4	<b>6908 10 13</b>	15	16	34.5	26.5	0.033
10	R3/8	<b>6908 10 17</b>	17	16	34.5	26.5	0.043
	R1/2	<b>6908 10 21</b>	21	16	34.5	26.5	0.065
12	R3/8	<b>6908 12 17</b>	19	19	40.5	31	0.053
	R1/2	<b>6908 12 21</b>	21	19	40.5	31	0.061

The body swivels for positioning purposes.

## 6903 Stud Run Tee, Male BSPT Thread

Bio-based polymer, FDA chemical Nickel-plated brass, EPDM



ØD	C		F	G	H	H1	L	Kg
4	R1/8	<b>6903 04 10</b>	10	8.5	31	18	14.5	0.009
	R1/4	<b>6903 04 13</b>	14	8.5	31	19	14.5	0.020
6	R1/4	<b>6903 06 13</b>	14	10.5	39	23	17.5	0.011
	R1/8	<b>6903 08 10</b>	13	13.5	53	30	23	0.020
8	R1/4	<b>6903 08 13</b>	14	13.5	52	29	23	0.025
	R3/8	<b>6903 08 17</b>	17	13.5	52	29	23	0.036
	R1/4	<b>6903 10 13</b>	15	16	61	35	26.5	0.033
10	R3/8	<b>6903 10 17</b>	17	16	61	35	26.5	0.043
	R1/2	<b>6903 10 21</b>	21	16	61	35	26.5	0.065
12	R3/8	<b>6903 12 17</b>	19	19	70	39	31	0.053
	R1/2	<b>6903 12 21</b>	21	19	70	39	31	0.061

The body swivels for positioning purposes.