

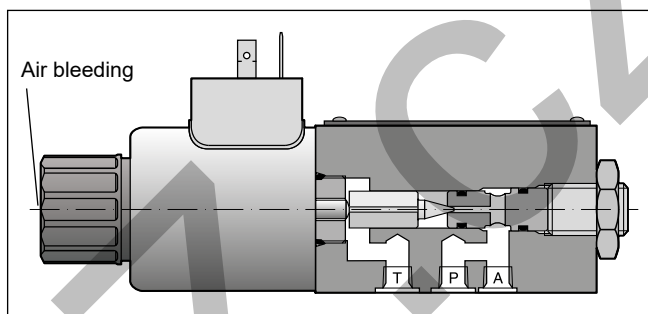
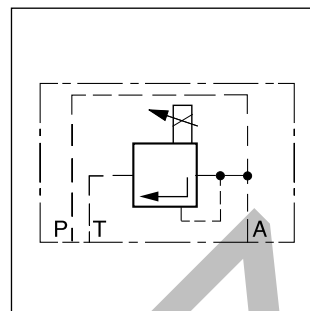
Pressure relief valves of the series RE06M\*W are direct operated proportional valves typically used as remote control valves for flow rates below 3 l/min.

**Function**

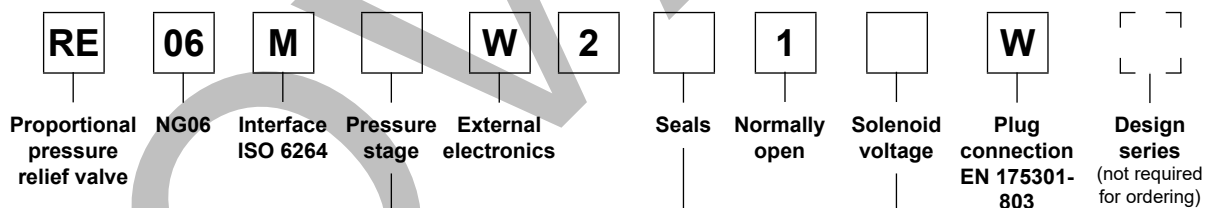
When the pressure in port P or A exceeds the pressure setting at the solenoid, the cone opens to port T and limits the pressure in port P to the adjusted level.

The optimum performance can be achieved in combination with the digital amplifier module PCD00A-400.

Also available as sandwich valve, see Chapter 8, Pilot valves series RPDM.

**4****Features**

- Direct operated with proportional solenoid
- Very low pressure adjustment of  $p_{min}$
- 2 pressure ports, A and P
- Subplate mounting according to ISO 6264
- 4 pressure stages

**Ordering Code**

Code	Pressure stage
10	up to 105 bar
<b>17</b>	<b>up to 175 bar</b>
25	up to 250 bar
35	up to 350 bar

Code	Solenoid voltage
<b>K</b>	<b>12 V, 2.5 A</b>
X	16 V, 1.3 A

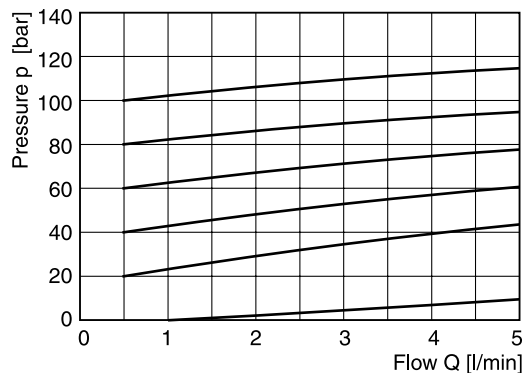
Code	Seals
N	NBR
<b>V</b>	<b>FPM</b>

**Bold letters =**  
Short-term availability

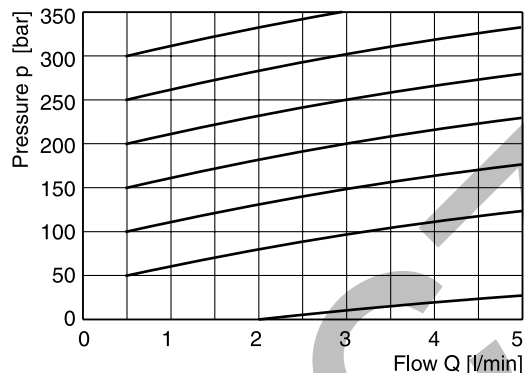
General		
Nominal size		DIN NG06 / CETOP 03 / NFPA D03
Interface		Subplate mounting according to ISO 6264
Mounting position		Unrestricted, horizontal mounting preferred
Ambient temperature	[°C]	-20 ... +60
MTTF <sub>D</sub> value	[years]	150
Weight	[kg]	1.8
Hydraulic		
Max. operating pressure	[bar]	Ports P and A up to 350; port T 30
Pressure stages	[bar]	105, 175, 250, 350
Nominal flow	[l/min]	See p/Q curves
Fluid		Hydraulic oil according to DIN 51524
Viscosity, permitted	[cSt] / [mm²/s]	20 ... 400
recommended	[cSt] / [mm²/s]	30 ... 80
Fluid temperature	[°C]	-20...+70 (NBR: -25...+70)
Filtration		ISO 4406; 18/16/13
Linearity	[%]	±2.8
Repeatability	[%]	<±1
Hysteresis	[%]	±1.5 of p <sub>max</sub>
Electrical		
Duty ratio	[%]	100 ED
Protection class		IP65 in accordance with EN 60529 (with correctly mounted plug-in connector)
Nominal voltage	[V]	12 (2.5 A max. current), 16 (1.3 A max. current)
Coil resistance at 20 °C	[Ohm]	4.28 (at 12 V), 12 (at 16 V)
Solenoid connection		Connector as per EN 175301-803
Power amplifier, recommended		PCD00A-400

**p/Q curves**

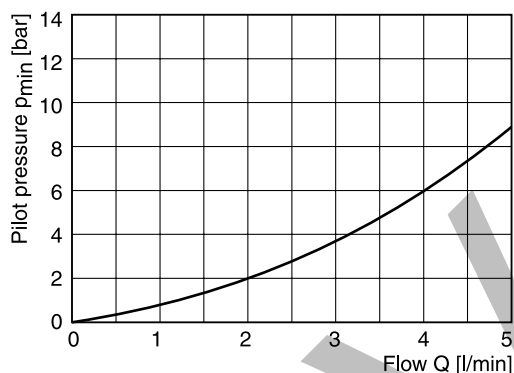
**Pressure stage 105 bar**



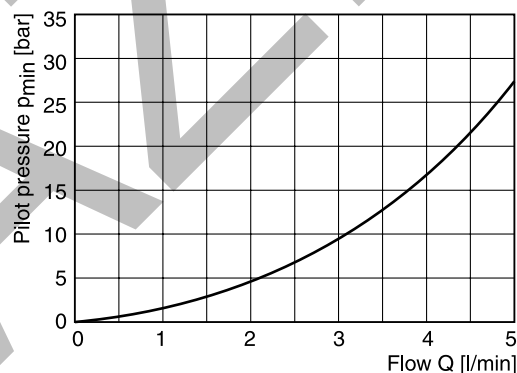
**Pressure stage 350 bar**



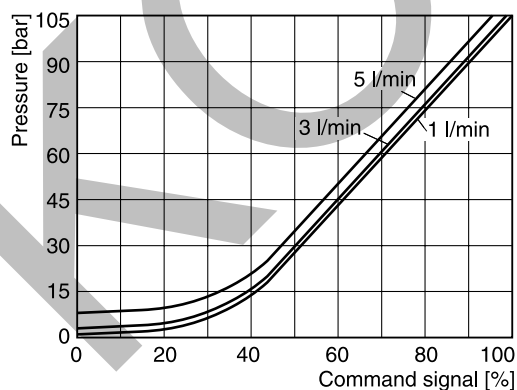
**Min. adjusted pressure**  
**Pressure stage 105 bar**



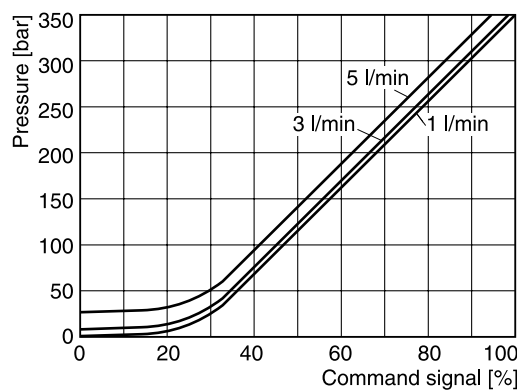
**Pressure stage 350 bar**



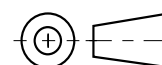
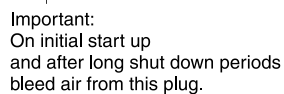
**Pressure/signal curve**  
**Pressure stage 105 bar**



**Pressure stage 350 bar**



All characteristic curves measured with HLP46 at 50 °C.



**Mounting pattern ISO 6264-03-04-\* -97**

