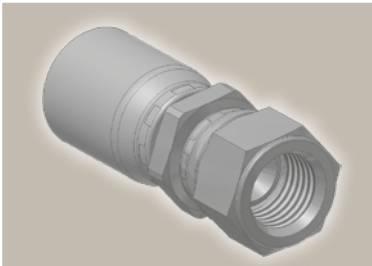
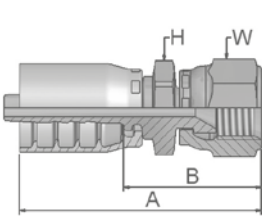










XU **Female Metric – Swivel
Straight (30° Flare)**
JIS B8363



Part Number		 Hose I.D.				 Thread	A	B	 H	 W
46 series	48 series	DN	Inch	Size	mm	metric	mm	mm	mm	mm
	1XU48-10-10	16	5/8	-10	15.9	M24x1.5	69	44	30	32
	1XU48-12-12	19	3/4	-12	19.1	M30x1.5	73	47	32	36

Approved **fitting series** for **hose types**, depending on size: Also available in stainless steel. Details can be found in CAT 4400.1/UK

 46 or  48	441	461LT	462	462TC	462ST	629PU	692PU Twin										
 46	463	492	492ST	492TC	692	692Twin	692TC	BCH1									
 48	301SN	304	387	387ST	387TC	421RH	421SN	426	421TC	436	441RH	462PU	462PU Twin	BCH2	HT2	...	
	471TC	477	477ST	477TC	477RH	487	487ST	487TC	493	787	787TC	787ST	797	797TC	797ST	811	881