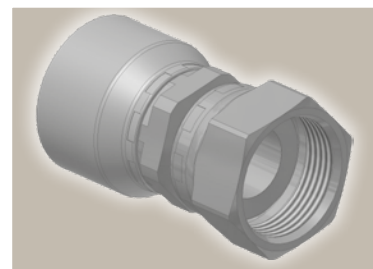
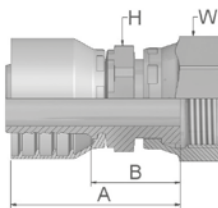


JC

# Female ORFS Swivel – Straight Short

ISO 12151-1 – SWSA  
SAE J516 – ORFS







\*New 3S-Fitting-Design – more information see Cc-Index

Part Number		Hose I.D.				Thread	A	B	H	W
46 series	48 series	DN	Inch	Size	mm	UNF	mm	mm	mm	mm
1JC46-4-4		6	1/4	-4	6.4	9/16x18	46	22	14	17
	1JC48-4-4*	6	1/4	-4	6.4	9/16x18	39	15	13	17
1JC46-6-4		6	1/4	-4	6.4	11/16x16	45	23	17	22
	1JC48-6-4*	6	1/4	-4	6.4	11/16x16	40	17	13	22
1JC46-8-4	1JC48-8-4	6	1/4	-4	6.4	13/16x16	45	22	19	24
1JC46-6-5	1JC48-6-5	8	5/16	-5	7.9	11/16x16	47	23	17	22
1JC46-4-6	1JC48-4-6	10	3/8	-6	9.5	9/16x18	42	19	17	17
1JC46-6-6		10	3/8	-6	9.5	11/16x16	43	21	17	22
	1JC48-6-6*	10	3/8	-6	9.5	11/16x16	40	17	17	22
1JC46-8-6		10	3/8	-6	9.5	13/16x16	45	22	19	24
	1JC48-8-6*	10	3/8	-6	9.5	13/16x16	41	19	17	24
1JC46-6-8	1JC48-6-8	12	1/2	-8	12.7	11/16x16	44	20	17	22
1JC46-8-8		12	1/2	-8	12.7	13/16x16	46	22	22	24
	1JC48-8-8*	12	1/2	-8	12.7	13/16x16	43	21	22	24
1JC46-10-8		12	1/2	-8	12.7	1x14	48	24	24	30
	1JC48-10-8*	12	1/2	-8	12.7	1x14	46	22	22	30
1JC46-12-8	1JC48-12-8	12	1/2	-8	12.7	1 3/16x12	52	29	30	36
1JC46-8-10	1JC48-8-10	16	5/8	-10	15.9	13/16x16	47	22	22	24
1JC46-10-10		16	5/8	-10	15.9	1x14	51	26	24	30
	1JC48-10-10*	16	5/8	-10	15.9	1x14	49	24	24	30
1JC46-12-10		16	5/8	-10	15.9	1 3/16x12	54	28	30	36
	1JC48-12-10*	16	5/8	-10	15.9	1 3/16x12	51	26	24	36
1JC46-10-12	1JC48-10-12	19	3/4	-12	19.1	1x14	54	28	24	30
1JC46-12-12		19	3/4	-12	19.1	1 3/16x12	55	29	30	36
	1JC48-12-12*	19	3/4	-12	19.1	1 3/16x12	52	27	27	36
1JC46-16-12	1JC48-16-12	19	3/4	-12	19.1	1 7/16x12	59	33	36	41
	1JC48-12-16	25	1	-16	25.4	1 3/16x12	60	30	32	36
1JC46-16-16		25	1	-16	25.4	1 7/16x12	63	33	36	41
	1JC48-16-16*	25	1	-16	25.4	1 7/16x12	63	31	32	41
1JC46-20-16		25	1	-16	25.4	1 11/16x12	62	32	41	50
	1JC48-20-16*	25	1	-16	25.4	1 11/16x12	63	31	32	50
1JC46-20-20		31	1 1/4	-20	31.8	1 11/16x12	71	33	41	50
	1JC48-20-20	31	1 1/4	-20	31.8	1 11/16x12	85	36	50	50

Approved **fitting series** for **hose types**, depending on size:

Also available in stainless steel. Details can be found in GAT 4400.1/UK

	46	or		48	441	461LT	462	462TC	462ST	629PU	692PU Twin							
	46	463	492	492ST	492TC	692	692Twin	692TC	BCH1									
	48	301SN	304	387	387ST	387TC	421RH	421SN	426	421TC	436	441RH	462PU	462PU Twin	BCH2	HT2	...	
		471TC	477	477ST	477TC	477RH	487	487ST	487TC	493	787	787TC	787ST	797	797TC	797ST	811	881