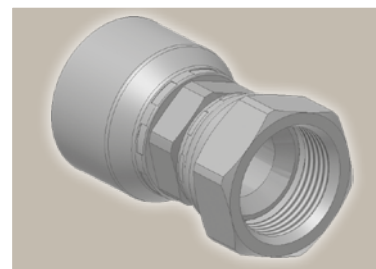
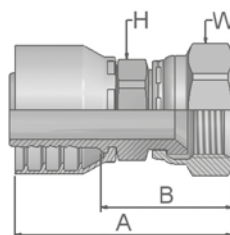


# 06/68 Female – JIC 37° SAE 45° Dual Flare Swivel – Straight

ISO12151-5-SWS – DKJ







\*New 3S-Fitting-Design – more information see Cc-Index

Part Number		Hose I.D.				Thread	A	B	H	W
46 series	48 series	DN	Inch	Size	mm	UNF	mm	mm	mm	mm
16846-4-4	10648-4-4*	6	1/4	-4	6.4	7/16x20	48	24	13	14
		6	1/4	-4	6.4	7/16x20	52	29	14	17
	10648-5-4*	6	1/4	-4	6.4	1/2x20	49	25	13	17
16846-5-4		6	1/4	-4	6.4	1/2x20	53	30	14	17
10646-6-4		6	1/4	-4	6.4	9/16x18	55	31	14	19
	10648-6-4*	6	1/4	-4	6.4	9/16x18	51	27	13	19
16846-5-5		8	5/16	-5	7.9	1/2x20	54	31	14	17
	16848-5-5	8	5/16	-5	7.9	1/2x20	54	30	14	17
10646-6-5	10648-6-5	8	5/16	-5	7.9	9/16x18	53	29	14	19
16846-8-5	16848-8-5	8	5/16	-5	7.9	3/4x16	57	34	17	22
16846-4-6	16848-4-6	10	3/8	-6	9.5	7/16x20	50	27	14	17
16846-5-6		10	3/8	-6	9.5	1/2x20	51	29	14	17
	16848-5-6	10	3/8	-6	9.5	1/2x20	52	29	14	17
10646-6-6		10	3/8	-6	9.5	9/16x18	52	30	17	19
	10648-6-6*	10	3/8	-6	9.5	9/16x18	49	26	17	19
	10648-8-6*	10	3/8	-6	9.5	3/4x16	52	30	17	22
16846-8-6		10	3/8	-6	9.5	3/4x16	56	34	17	22
16846-10-6	16848-10-6	10	3/8	-6	9.5	7/8x14	59	36	22	27
10646-6-8	10648-6-8	12	1/2	-8	12.7	9/16x18	55	32	22	19
	10648-8-8*	12	1/2	-8	12.7	3/4x16	56	34	22	22
16846-8-8		12	1/2	-8	12.7	3/4x16	56	32	22	22
	10648-10-8*	12	1/2	-8	12.7	7/8x14	59	36	22	27
16846-10-8		12	1/2	-8	12.7	7/8x14	62	38	22	27
10646-12-8	10648-12-8	12	1/2	-8	12.7	1 1/16x12	62	39	27	32
16846-8-10	16848-8-10	16	5/8	-10	15.9	3/4x16	57	32	22	22
	10648-10-10*	16	5/8	-10	15.9	7/8x14	62	37	24	27
16846-10-10		16	5/8	-10	15.9	7/8x14	60	35	22	27
10646-12-10		16	5/8	-10	15.9	1 1/16x12	64	39	27	32
	10648-12-10*	16	5/8	-10	15.9	1 1/16x12	63	39	24	32
16846-8-12	16848-8-12	19	3/4	-12	19.1	3/4x16	58	32	24	22
16846-10-12	16848-10-12	19	3/4	-12	19.1	7/8x14	61	35	24	27
10646-12-12		19	3/4	-12	19.1	1 1/16x12	67	41	27	32
	10648-12-12*	19	3/4	-12	19.1	1 1/16x12	65	40	27	32
10646-14-12	10648-14-12	19	3/4	-12	19.1	1 3/16x12	68	42	30	36
10646-16-12	10648-16-12	19	3/4	-12	19.1	1 5/16x12	71	45	32	41
10646-12-16	10648-12-16	25	1	-16	25.4	1 1/16x12	73	44	32	32
10646-16-16		25	1	-16	25.4	1 5/16x12	75	46	32	41
	10648-16-16*	25	1	-16	25.4	1 5/16x12	78	45	32	41
10646-20-16		25	1	-16	25.4	1 5/8x12	80	50	41	50
	10648-20-16*	25	1	-16	25.4	1 5/8x12	82	50	32	50
10646-16-20		31	1 1/4	-20	31.8	1 5/16x12	87	49	41	41
	10648-16-20	31	1 1/4	-20	31.8	1 5/16x12	97	50	46	41
10646-20-20		31	1 1/4	-20	31.8	1 5/8x12	89	51	46	50
	10648-20-20	31	1 1/4	-20	31.8	1 5/8x12	100	53	46	50
	10648-24-24	38	1 1/2	-24	38.1	1 7/8x12	98	60	55	60
	10648-32-32	51	2	-32	50.8	2 1/2x12	120	72	65	75

Approved fitting series for hose types, depending on size:

Also available in stainless steel. Details can be found in CAT 4400.1/UK

	or		441	461LT	462	462TC	462ST	629PU	692PU Twin								
	463	492	492ST	492TC	692	692Twin	692TC	BCH1									
	301SN	304	387	387ST	387TC	421RH	421SN	426	421TC	436	441RH	462PU	462PU Twin	BCH2	HT2	...	
	471TC	477	477ST	477TC	477RH	487	487ST	487TC	493	787	787TC	787ST	797	797TC	797ST	811	881