

<b>C</b>		<b>E</b>			①	②	③	④		
Cover	Nominal size	Cover with pressure relief and pilot system mounting	Pressure range	Pressure adjustment	Orifice / choke				Seal	Design series (not required for ordering)

Code	Size
016	NG16
025	NG25
032	NG32

Code	Pressure range [bar]
07	75
17	175
25	250
35	350

Code	Adjustment
S	Screw with lock nut
L	Knob E10 lock

Code	Seal
N	NBR
V	FPM

Code	Orifice
99	Without orifice, open

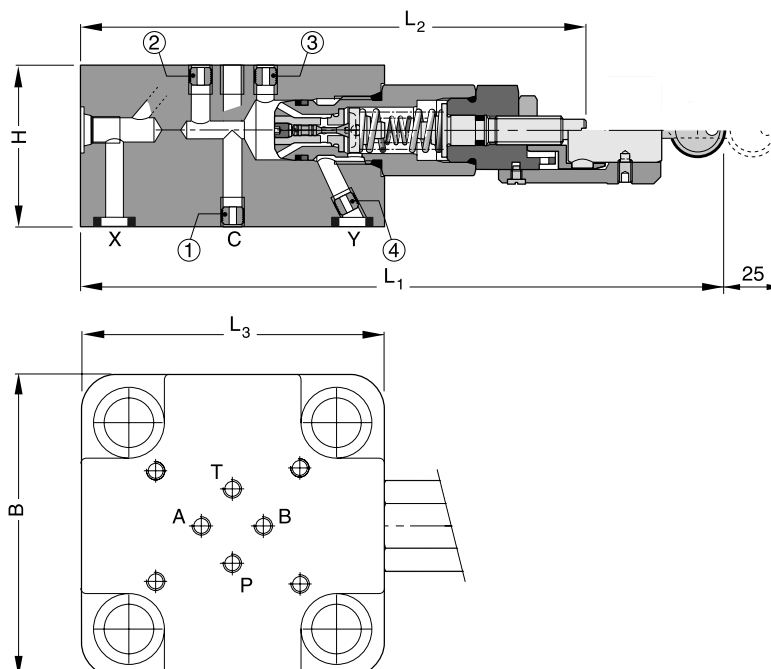
  

○ Orifice position

For orifice recommendations, bolt and seal kits see "Accessories" in this chapter.

**Bold letters =**  
**Short-term availability**

## Dimensions



Size	B	H	L1 max.	L2 max.	L3 max.	Orifice thread			
						①	②	③	④
NG16	65	40	160	125	82	M5	M5	M5	M5
NG25	85	45	166	132	88	M5	M5	M6	M6
NG32	102	50	183	152	105	M5	M5	M6	M6

CE-C\_UK.INDD RH\_23.01.08