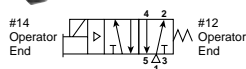
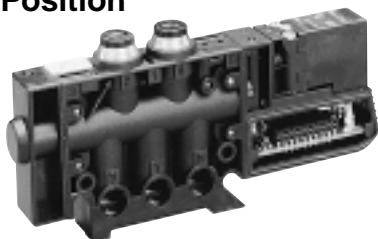


## Single Solenoid

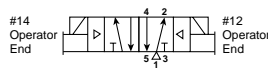
4-Way, 2-Position



PVLB10	<b>PVLB1016187W2</b>	1/8" NPT	12-48 VDC	0.6 Cv
	<b>PVLB1016187W1</b>		24-120 VAC	
	<b>PVLB1016067W2</b>	1/4" Tube	12-48 VDC	
	<b>PVLB1016067W1</b>		24-120 VAC	
	PVLB101618W2	1/8" BSP	12-48 VDC	
	PVLB101618W1		24-120 VAC	
	PVLB101606W2	6mm Tube	12-48 VDC	
	PVLB101606W1		24-120 VAC	

## Double Solenoid

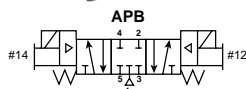
4-Way, 2-Position



PVLB10	<b>PVLB1026187W2</b>	1/8" NPT	12-48 VDC	0.6 Cv
	<b>PVLB1026187W1</b>		24-120 VAC	
	<b>PVLB1026067W2</b>	1/4" Tube	12-48 VDC	
	<b>PVLB1026067W1</b>		24-120 VAC	
	PVLB102618W2	1/8" BSP	12-48 VDC	
	PVLB102618W1		24-120 VAC	
	PVLB102606W2	6mm Tube	12-48 VDC	
	PVLB102606W1		24-120 VAC	

## Double Solenoid

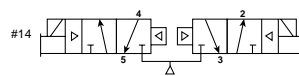
4-Way, 3-Position APB



PVLB10	<b>PVLB1076187W2</b>	1/8" NPT	12-48 VDC	0.6 Cv
	<b>PVLB1076187W1</b>		24-120 VAC	
	<b>PVLB1076067W2</b>	1/4" Tube	12-48 VDC	
	<b>PVLB1076067W1</b>		24-120 VAC	
	PVLB107618W2	1/8" BSP	12-48 VDC	
	PVLB107618W1		24-120 VAC	
	PVLB107606W2	6mm Tube	12-48 VDC	
	PVLB107606W1		24-120 VAC	

## Double Solenoid

Dual 3/2 Normally Closed



PVLB10	<b>PVLB1056187W2</b>	1/8" NPT	12-48 VDC	0.6 Cv
	<b>PVLB1056187W1</b>		24-120 VAC	
	<b>PVLB1056067W2</b>	1/4" Tube	12-48 VDC	
	<b>PVLB1056067W1</b>		24-120 VAC	
	PVLB105618W2	1/8" BSP	12-48 VDC	
	PVLB105618W1		24-120 VAC	
	PVLB105606W2	6mm Tube	12-48 VDC	
	PVLB105606W1		24-120 VAC	

PVLB10	<b>PVLB1086187W2</b>	1/8" NPT	12-48 VDC	0.6 Cv
	<b>PVLB1086187W1</b>		24-120 VAC	
	<b>PVLB1086067W2</b>	1/4" Tube	12-48 VDC	
	<b>PVLB1086067W1</b>		24-120 VAC	
	PVLB108618W2	1/8" BSP	12-48 VDC	
	PVLB108618W1		24-120 VAC	
	PVLB108606W2	6mm Tube	12-48 VDC	
	PVLB108606W1		24-120 VAC	

### NOTES:

Solenoids sold separately on page 25.

**Standard Part Numbers in Bold.**