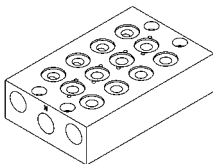
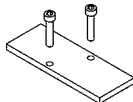
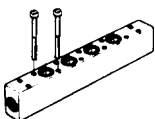
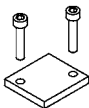

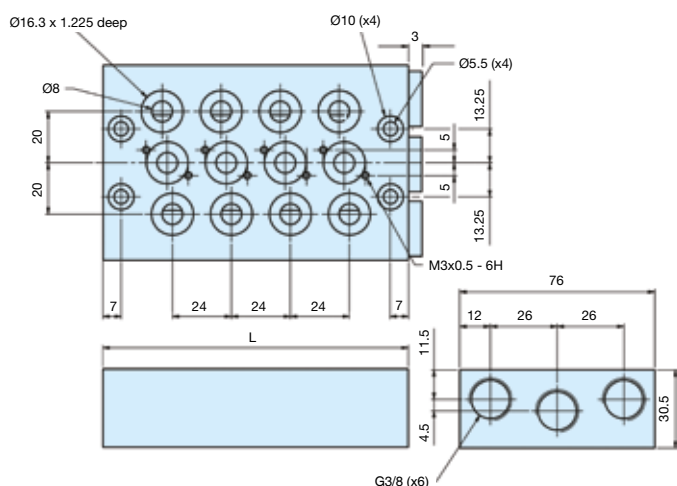


Accessories P2LB	Type	Weight kg	Order code
	Manifold bar, P2LB, (not for P2LB with external air supply to solenoid valves) incl. fasteners and O-ring. G3/8		
	For 2 valves	0,69	9121594805X
	For 4 valves	1,13	9121594806X
	For 6 valves	1,56	9121594807X
	For 8 valves	2,00	9121594808X
	For 10 valves	2,45	9121594812X
	Blanking plate, P2LBX for Manifold bar	0,10	9121594809X
	Pressure bar, P2LBX for common air supply incl. O-rings and mounting screws. G3/8		
	For 2 valves	0,38	9127113301X
	For 4 valves	0,53	9127113302X
	For 6 valves	0,68	9127113303X
	For 8 valves	0,83	9127113304X
	For 10 valves	0,99	9127113305X
	Blanking plate P2LBX for Pressure bar. G1/4	0,02	9127113306X
	Manifold Spares Kit P2LB Manifold O-rings, Manifold and Blanking Plate Screws	0,04	P2LB/MAN-KIT

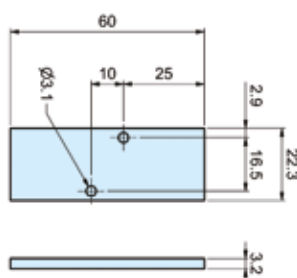
Dimensions

Manifold bar, P2LB

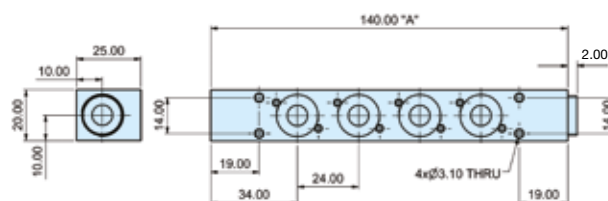


No. of valves	L mm
2	74
4	122
6	170
8	218
10	266

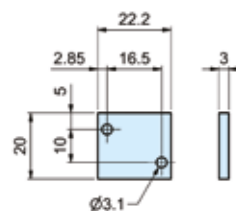
Blanking plate for manifold bar, P2LB



Pressure bar, P2LB



Blanking plate for pressure bar, P2LB



No. of valves	A mm
2	92
4	140
6	188
8	236
10	284