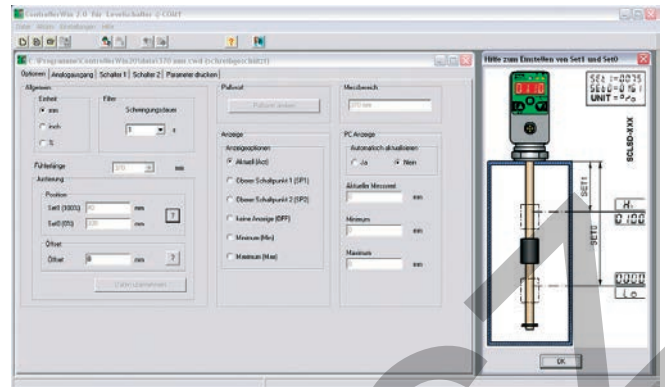


# ControllerWIN software

## Device features

- Suitable for the Controller Family
- Simple adjustment of all parameters
- Saving of the parameters
- Adjustment with PC/laptop
  - at the workbench
  - at the desk
  - in the plant



The ControllerWIN software allows the adjustment and saving of all parameters, including:

- Switching points
- NO / NC contact function
- Window / hysteresis
- Scaling of the analogue output
- Passwords

From the Controller Family product series:

- SCPSD
- SCTSD
- SCLSD
- SCLTSD
- SCOTC

## Function

A no-contact infra-red interface is used to compare the data with the corresponding functional controller. This can take place directly in the facility or externally using a power supply unit (not included in the delivery).

- It is not necessary to disconnect the power supply or pull the cable out (operations are not interrupted).

A programming adapter is connected to the corresponding controller and the data is transmitted to a PC.

The SCSD-PRG\_KIT programming kit includes all components (adapter, software and power supply) required for adjusting the controller with the PC or laptop:

- At the workbench
- At the desk
- In the plant

## Application

- Saving and logging the adjusted values
- Programming multiple controllers
- Easy exchange of existing controllers

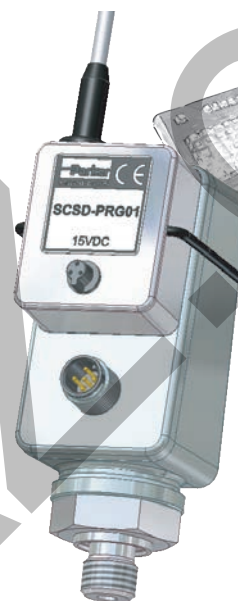
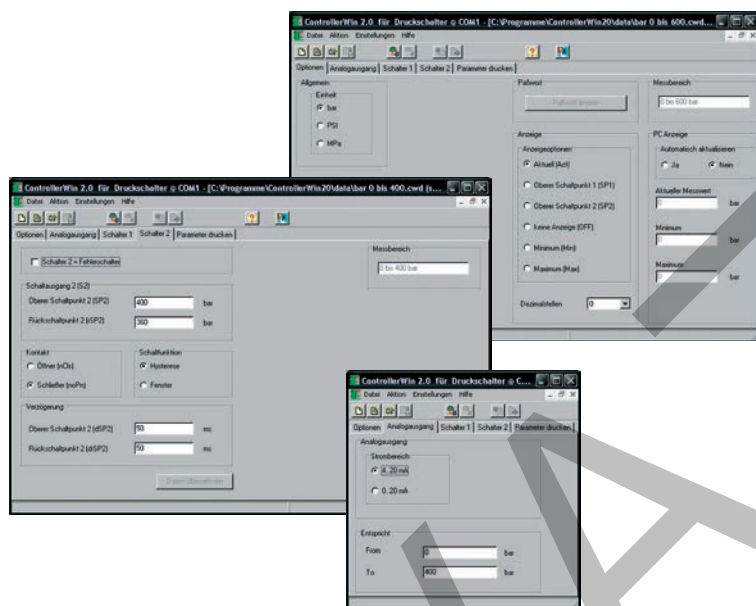
The programming kit is the ideal solution in each of these cases.

# ControllerWIN software

## Technical data

### System requirements

Operating system	PC / laptop connection	Controller connection
WIN 98/2000/ME/NT/XP	RS232 (USB using conventional adapter)	Parker infra-red interface SCxSD/SCOTC



### Accessories for:

PressureController	TemperatureController	LevelController	LevelTempController	OilTankController
Pressure display and monitoring	Temperature display and monitoring	Level indication and monitoring	Level and temperature display and monitoring	

## Order code

PC Programming KIT

SCSD-PRG-KIT