

Tube clamps series O

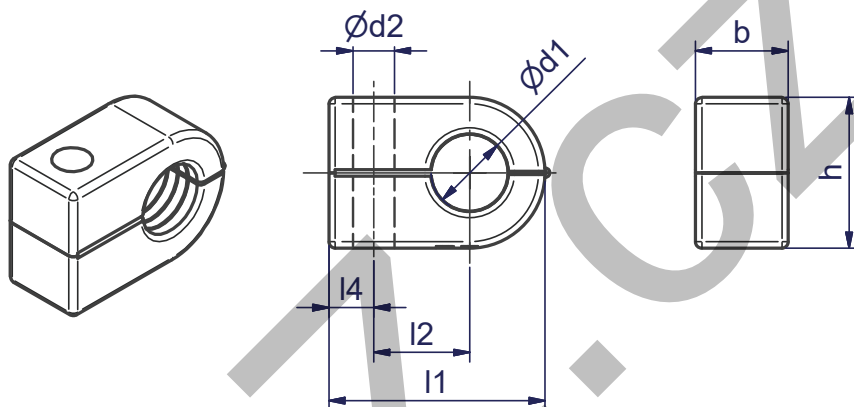
Order codes for clamps:

Material	Interior surface	Order code
Polypropylene	smooth	ROP
Polyamide	smooth	RON

Packing standard 100 pieces.

Areas of Application:

- pneumatics
 - automotive technology
 - mechanical engineering
 - measurement and control
 - naval technologie
- also suitable for cables and hoses.



Clamp-size	O.D. mm	Tube Ø d1 Tube NB	Inch	Order code Polypropylene ROP	Order code Polyamide RON	l1	l2	l4	b	H	Ø d2
1	6.0			ROP106X	RON106X	23	9	7	14.5	13.5	6.5
	6.4		1/4	ROP106.4X	RON106.4X						
	8.0			ROP108X	RON108X						
2	8.0			ROP208X	RON208X	27	11	7	14.5	18.5	6.5
	9.5		3/8	ROP209.5X	RON209.5X						
	10.0	G 1/8		ROP210X	RON210X						
	12.0			ROP212X	RON212X						
	12.7		1/2	ROP212.7X	RON212.7X						
3	10.0	G 1/8		ROP310X	RON310X	34	15	7	14.5	23.5	6.5
	12.0			ROP312X	RON312X						
	12.7		1/2	ROP312.7X	RON312.7X						
	13.5	G 1/4		ROP313.5X	RON313.5X						
	14.0			ROP314X	RON314X						
	15.0			ROP315X	RON315X						
	16.0		5/8	ROP316X	RON316X						
4	14.0			ROP414X	RON414X	40	19	6	14.5	30.5	6.5
	15.0		5/8	ROP415X	RON415X						
	16.0			ROP416X	RON416X						
	17.2	G 3/8		ROP417.2X	RON417.2X						
	18.0			ROP418X	RON418X						
	19.0		3/4	ROP419X	RON419X						
	20.0			ROP420X	RON420X						
	21.3	G 1/2		ROP421.3X	RON421.3X						
	22.0			ROP422X	RON422X						

Double-Tube clamps series O

Order codes for clamps:

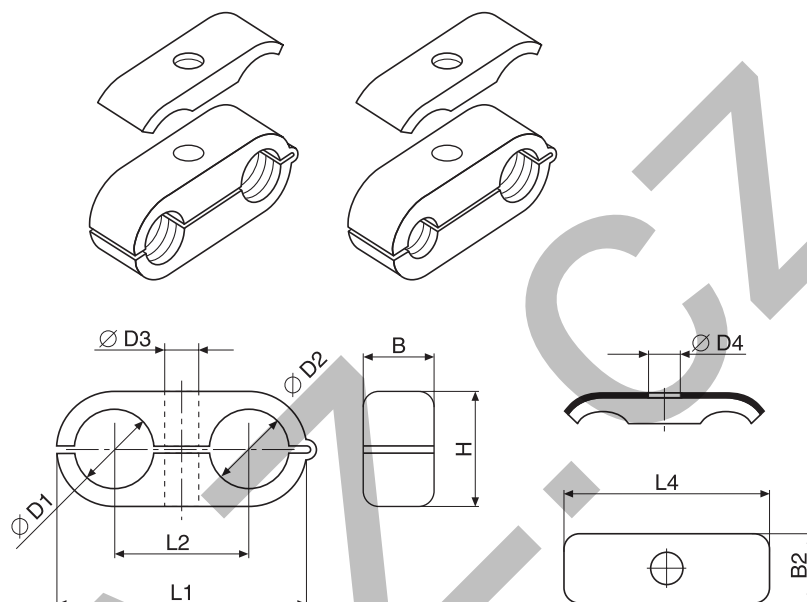
Material	Interiour surface	Order code
Polypropylene	smooth	ROPD
Polyamide	smooth	ROND

Different diameter on request.

Packing standard 100 pieces.

Areas of Application:

- pneumatics
 - automotive technology
 - mechanical engineering
 - measurement and control
 - machine tool industry
- also suitable for cables and hoses.



Clamp-size	Tube O.D. D1/D2			Order code	Order code	Order code	L1	L2	B	H	Ø D3	L4	B2	Ø D4
	mm	Tube NB	Inch	Polypropylene ROPD	Polyamide ROND	Cover plate DPO								
1	6.0		1/4	ROPD106X	ROND106X	DPO1X¹⁾ DPO14571X	32	18	14.5	13.5	6.5	29.0	16.3	6.5
	6.4			ROPD106.4X	ROND106.4X									
	8.0			ROPD108X	ROND108X									
2	8.0		3/8	ROPD208X	ROND208X	DPO2X¹⁾ DPO24571X	41	22	14.5	18.5	6.5	40.0	16.3	6.5
	9.5			ROPD209.5X	ROND209.5X									
	10.0	1/8		ROPD210X	ROND210X									
	12.0		1/2	ROPD212X	ROND212X									
	12.7			ROPD212.7X	ROND212.7X									
3	10.0	1/8	1/2	ROPD310X	ROND310X	DPO3X¹⁾ DPO34571X	54	30	14.5	23.5	6.5	50.5	16.5	6.5
	12.0			ROPD312X	ROND312X									
	12.7			ROPD312.7X	ROND312.7X									
	13.5	1/4	5/8	ROPD313.5X	ROND313.5X									
	14.0			ROPD314X	ROND314X									
	15.0			ROPD315X	ROND315X									
	16.0			ROPD316X	ROND316X									
4	14.0		5/8	ROPD414X	ROND414X	DPO4X¹⁾ DPO44571X	69	38	14.5	30.5	6.5	63.0	16.5	6.5
	15.0			ROPD415X	ROND415X									
	16.0			ROPD416X	ROND416X									
	17.2	3/8	3/4	ROPD417.2X	ROND417.2X									
	18.0			ROPD418X	ROND418X									
	19.0			ROPD419X	ROND419X									
	20.0			ROPD420X	ROND420X									
	21.3	1/2		ROPD421.3X	ROND421.3X									
	22.0			ROPD422X	ROND422X									

¹⁾ Material = Steel, zinc plated, Cr(VI)-free