

# Tube clamps series C (Heavy series) – Components

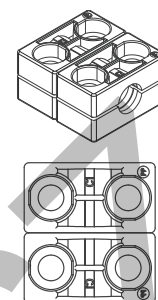
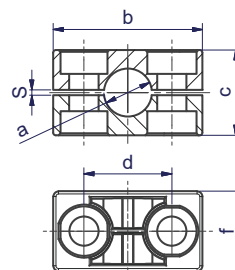
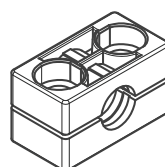
DIN 3015, part 2

Order codes for clamp halves:

Material	Interior surface	Order code
Polypropylene	grooved	RCP
	smooth	RCPG <sup>1)</sup>
Polyamide	grooved	RCN
	smooth	RCNG <sup>1)</sup>
Rubber	grooved	RCVR <sup>1)2)</sup>
	smooth	RCVG <sup>1)2)</sup>
Aluminium	grooved	RCA

(Please exchange as required standard abbreviation RCP in column for "clamp halves")

For flame- or corrosion retardant materials, please refer to page T5.



Please order 2x the single clamp (e.g. 2x RCP...)

clamp size	Tube O.D. mm a	Tube NB	Tube O.D.	1 part 2 clamp halves					dimensions: f																			
				RCP... Order code	b	c	d	s		f																		
1	6.0	G 1/8	5/16	RCP106X	56	32	33	2	30	60																		
	8.0			RCP108X																								
	9.5			RCP109.5X																								
	10.0			RCP110X																								
	12.0	G 1/4	1/2	RCP112X							56	32	33	2	30	60												
	12.7			RCP112.7X																								
	13.5			RCP113.5X																								
	14.0			RCP114X																								
	15.0	G 3/8	5/8	RCP115X													56	32	33	2	30	60						
	16.0			RCP116X																								
	17.2			RCP117.2X																								
	18.0			RCP118X																								
2	19.0	G 1/2	3/4	RCP219X	71	48	45	2	30	60																		
	20.0			RCP220X																								
	21.3			RCP221.3X																								
	22.0			RCP222X																								
	23.0	G 3/4	1	RCP223X							71	48	45	2	30	60												
	25.0			RCP225X																								
	25.4			RCP225.4X																								
	26.9			RCP226.9X																								
	28.0	G 1	1 1/4	RCP228X													71	48	45	2	30	60						
	30.0			RCP230X																								
	30.0			RCP330X																			86	60	60	2	30	60
	32.0			RCP332X																								
33.7	RCP333.7X	86	60	60	2	30	60																					
35.0	RCP335X																											
38.0	RCP338X																											
40.0	RCP340X																											
42.0	RCP342X																											
4	38.0							G 1 1/4	1 1/2	RCP438X	117	90	90	3	45	90												
	40.0									RCP440X																		
	42.0									RCP442X																		
	45.0									RCP445X																		
	48.3							G 1 1/2	2	RCP448.3X							117	90	90	3	45	90						
	50.0									RCP450X																		
	51.0									RCP451X																		
	52.0	RCP452X																										
	55.0	G 2	2 1/4	RCP455X	117	90	90	3	45	90																		
	57.0			RCP457X																								
	60.3			RCP460.3X																								
	63.0			RCP463X																								
	65.0	2 1/2	2 3/4	RCP465X																			117	90	90	3	45	90
	70.0			RCP470X																								

Continuation see next page ...

## Tube clamps series C (Heavy series) – Components (Continued)

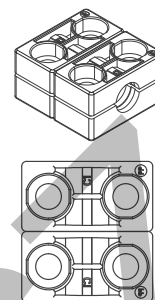
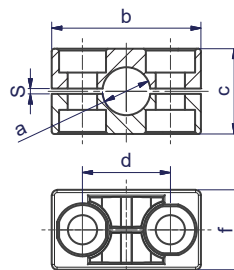
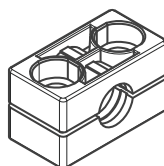
DIN 3015, part 2

Order codes for clamp halves:

Material	Interior surface	Order code
Polypropylene	grooved	RCP
	smooth	RCPG <sup>1)</sup>
Polyamide	grooved	RCN
	smooth	RCNG <sup>1)</sup>
Rubber	grooved	RCVR <sup>1)2)</sup>
	smooth	RCVG <sup>1)2)</sup>
Aluminium	grooved	RCA

(Please exchange as required standard abbreviation RCP in column for "clamp halves")

For flame- or corrosion retardant materials, please refer to page T5.



Please order 2x the single clamp (e.g. 2x RCP...)

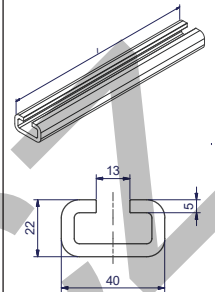
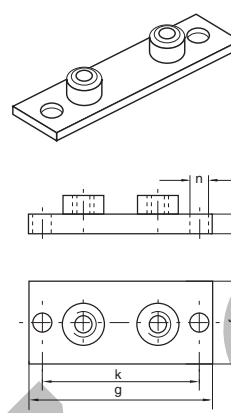
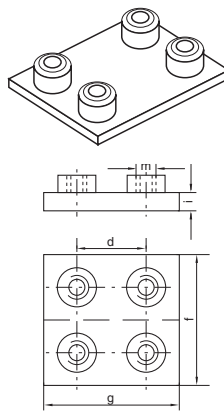
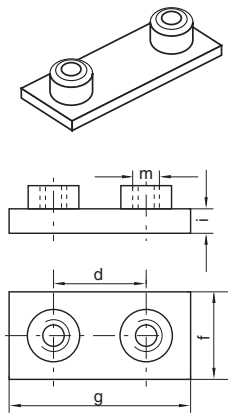
clamp size	Tube O.D. mm a	Tube NB	Tube O.D.	RCP... Order code	1 part 2 clamp halves dimensions:					dimensions: f
					b	c	d	s	f	
5	65.0	G 2 1/2	2 3/4	RCP565X	154	120	122	5	60	120
	70.0			RCP570X						
	73.0			RCP573X						
	75.0			RCP575X						
	76.1			RCP576.1X						
	80.0	G 3	3 1/4	RCP580X						
	82.5			RCP582.5X						
	85.0			RCP585X						
	88.0			RCP588X						
	88.9			RCP588.9X						
6	90.0	G 3 1/2	4	RCP590X	206	168	168	6	80	160
	97.0			RCP690X						
	100.0			RCP697X						
	101.6			RCP6100X						
	108.0	G 4	4 1/4	RCP6101.6X						
	114.3			RCP6108X						
	115.0			RCP6114.3X						
	120.0			RCP6115X						
	127.0			RCP6120X						
	127.0	G 5	5	RCP6127X						
7	130.0			RCP7127X	251	200	205	6	90	180
	133.0			RCP7130X						
	140.0			RCP7133X						
	150.0			RCP7140X						
	152.4	G 5 1/2	6	RCP7150X						
	159.0			RCP7152.4X						
	165.1			RCP7159X						
	168.3			RCP7165.1X						
	168.3	G 6	6 5/8	RCP7168.3X						
8	177.8			RCP8168.3X	320	270	265	6	120	240
	190.0			RCP8177.8X						
	193.7			RCP8190X						
	203.0			RCP8193.7X						
	219.1	G 8	8 5/8	RCP8203X						
	220.0			RCP8219.1X						
	220.0			RCP8220X						
9	219.1			RCP9219.1X	470	410	395	20	162	324
	244.5			RCP9244.5X						
	273.0	G 10	10 3/4	RCP9273X						
	323.9			RCP9323.9X						
10	355.6	G 14		RCP10355.6X	630	530	534	20	182	364
	406.4			RCP10406.4X						

<sup>1)</sup> Only sizes 1–8

<sup>2)</sup> When assembling solid rubber clamps, covering plates, hexagon screws and locking washers must be used.

## Tube clamps series C (Heavy series) – Components

DIN 3015, part 2



clamp size	AP C... Order code	weld plate dimensions:					APD C... Order code	double weld plate dimensions:					APL C... Order code	weld/screw plate dimensions:					TS C... Order code	length: l
		d	f	g	i	m		d	f	g	i	m		g	f	i	k	n		
1	APC1...*	33	30	73	8	M10	APDC1...*	33	60	73	8	M10	APLC1...*	113	30	8	85	11	TSC1X TSC1VERZX TSC14571X	1 m
2	APC2...*	45	30	84	8	M10	APDC2...*	45	60	84	8	M10	APLC2...*	125	30	8	97	11		TSC2X TSC2VERZX TSC24571X
3	APC3...*	60	30	100	8	M10	APDC3...*	60	60	100	8	M10	APLC3...*	140	30	8	112	11		
4	APC4...*	90	45	140	10	M12	APDC4...*	90	90	140	10	M12	APLC4...*	190	45	10	160	14		
5	APC5...*	122	60	180	10	M16	APDC5...*	122	120	180	10	M16	APLC5...*	240	60	10	205	18		
6	APC6...*	168	80	225	15	M20	APDC6...*	168	160	225	15	M20	APLC6...*	310	80	15	270	22		
7	APC7...*	205	90	270	15	M24	APDC7...*	205	180	270	15	M24	APLC7...*	370	90	15	320	26		
8	APC8...*	265	120	340	25	M30	APDC8...*	265	240	340	25	M30	APLC8...*	450	120	25	390	33		
9	APC9...*	395	160	520	30	M30	APDC9...*	395	330	520	30	M30								
10	APC10...*	534	180	680	30	M30	APDC10...*	534	364	680	30	M30								

Complete programme range please refer to page T34.

\*Please add the suffix below according to the surface/material required.

Order code suffixes		
Surface/material	Suffix	Example
Steel, phosphated	X	APC1X
Steel, zinc plated, Cr(VI)-free	VZX	APC1VZX
Stainless Steel 1.4571	4571X	APC14571X

## Tube clamps series C (Heavy series) – Components

DIN 3015, part 2

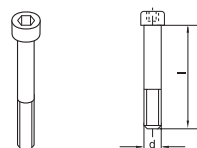
clamp size	rail nut	cover plate	double cover plate	hexagon head				
	<b>TM C...</b> Order code	dimensions: b d m	<b>DP C...</b> Order code	dimensions: b d f i m	<b>DPD C...</b> Order code	dimensions: b d f i m	<b>SS C...</b> Order code	dimensions: d x L
1	<b>TMC1VZX</b> <b>TMC14571X</b>	20 12.0 M10	<b>DPC1...*</b>	55 33 30 8 11	<b>DPDC1...*</b>	55 33 60 8 11	<b>SSC1...*</b>	M 10x40
2			<b>DPC2...*</b>	70 45 30 8 11	<b>DPDC2...*</b>	70 45 60 8 11	<b>SSC2...*</b>	M 10x60
3			<b>DPC3...*</b>	85 60 30 8 11	<b>DPDC3...*</b>	85 60 60 8 11	<b>SSC3...*</b>	M 10x70
4	<b>TMC4VZX</b> <b>TMC44571X</b>	23 12.5 M12	<b>DPC4...*</b>	115 90 45 10 14	<b>DPDC4...*</b>	115 90 90 10 14	<b>SSC4...*</b>	M 12x100
5			<b>DPC5...*</b>	152 122 60 10 18	<b>DPDC5...*</b>	152 122 120 10 18	<b>SSC5...*</b>	M 16x130
6			<b>DPC6...*</b>	205 168 80 15 22	<b>DPDC6...*</b>	205 168 160 15 24	<b>SSC6...*</b>	M 20x190
7			<b>DPC7...*</b>	251 205 90 15 28	<b>DPDC7...*</b>	250 205 180 15 28	<b>SSC7...*</b>	M 24x220
8			<b>DPC8...*</b>	320 265 120 25 35	<b>DPDC8...*</b>	322 265 240 25 35	<b>SSC8...*</b>	M 30x300
9			<b>DPC9...*</b>	470 395 160 30 35	<b>DPDC9...*</b>	466 395 330 30 35	<b>SSC9...*</b>	M 30x450
10			<b>DPC10...*</b>	630 534 180 30 35	<b>DPDC10...*</b>	630 534 360 30 35	<b>SSC10...*</b>	M 30x560

\*Please add the suffix below according to the surface/material required.

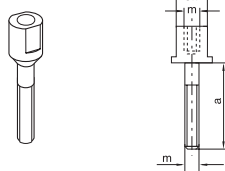
Order code suffixes		
Surface/material	Suffix	Example
Steel, phosphated	X	DPC1X
Steel, zinc plated, Cr(VI)-free	VZX	DPC1VZX
Stainless Steel 1.4571	4571X	DPC14571X

# Tube clamps series C (Heavy series) – Components

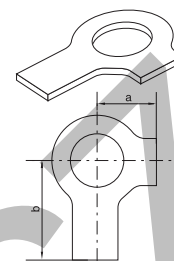
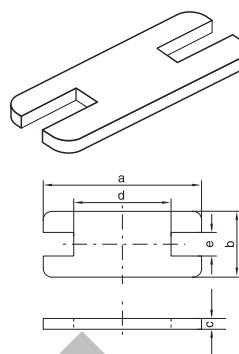
DIN 3015, part 2



ISO 4762



DIN 938



clamp size	socket head		stacking			locking plate <sup>1)</sup>					locking washer <sup>2)</sup>				
	IS C...	dimensions:	AS C...	dimensions:		SP C...	dimensions:					US C...	dimensions:		
	Order code	d × L	Order code	a	m	SW	Order code	a	b	c	d	e	Order code	a	b
1	ISC1...*	M 10×45	ASC1...*	25	M10	15	SPC1...*	55	30	8	14	15.5	USC1X <sup>3)</sup> USC14571X	13	22
2	ISC2...*	M 10×60	ASC2...*	40	M10	15	SPC2...*	70	30	8	26	15.5			
3	ISC3...*	M 10×70	ASC3...*	50	M10	15	SPC3...*	85	30	8	41	15.5			
4	ISC4...*	M 12×100	ASC4...*	80	M12	17	SPC4...*	115	45	10	69	17.5	USC4X <sup>3)</sup> USC44571X	15	28
5	ISC5...*	M 16×130	ASC5...*	110	M16	21	SPC5...*	152	60	10	97	21.5	USC5X <sup>3)</sup> USC54571X	18	32
6	ISC6...*	M 20×190	ASC6...*	155	M20	27	SPC6...*	205	80	15	137	27.5	USC6X <sup>3)</sup> USC64571X	21	36
7	ISC7...*	M 24×220	ASC7...*	180	M24	30	SPC7...*	250	90	15	169	30.5	USC7X <sup>3)</sup> USC74571X	25	42
8	ISC8...*	M 30×300	ASC8...*	250	M30	36	SPC8...*	320	120	25	219	36.5	USC8X <sup>3)</sup> USC84571X	32	52
9	ISC9...*	M 30×450													
10	ISC10...*	M 30×560													

<sup>1)</sup> The use of stacking screws necessitates the use of locking plates in the construction assembly!

<sup>2)</sup> When assembling solid rubber clamps, covering plates, hexagon screws and locking washers must be used.

<sup>3)</sup> Material = Steel, zinc plated, Cr(VI)-free

\*Please add the suffix below according to the surface/material required.

Order code suffixes		
Surface/material	Suffix	Example
Steel, phosphated	X	ISC1X
Steel, zinc plated, Cr(VI)-free	VZX	ISC1VZX
Stainless Steel 1.4571	4571X	ISC14571X

## Tube clamps series C – Complete range

### Order codes for clamp halves:

Material	Interior surface	Order code
Polypropylene	grooved	RCP
	smooth	RCPG <sup>1)</sup>
Polyamide	grooved	RCN
	smooth	RCNG <sup>1)</sup>
Rubber	grooved	RCVR <sup>1)2)</sup>
	smooth	RCVG <sup>1)2)</sup>
Aluminium	grooved	RCA

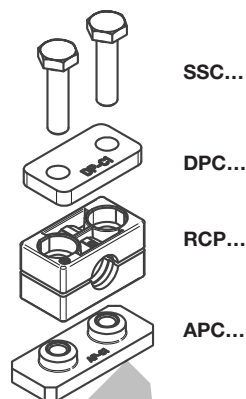
(Please exchange as required standard abbreviation RCP in column for "Order code")

For flame- or corrosion retardant materials, please refer to page T5.

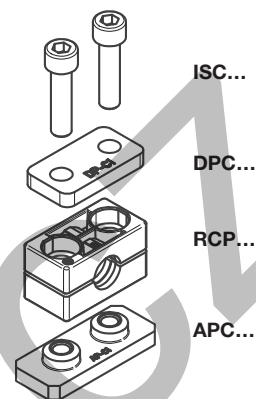
The steel parts of kits 1 and 2 are phosphated.

Other compositions available on request.

2 clamp halves, weld plate,  
cover plate, hex. head bolt



2 clamp halves, weld plate,  
cover plate, socket head bolt



clamp size	Tube O.D. mm	Tube NB	Tube O.D.	Order code	Order code
1	6.0			RCP1-106	RCP2-106
	8.0			RCP1-108	RCP2-108
	9.5	G 1/8	5/16	RCP1-109.5	RCP2-109.5
	10.0			RCP1-110	RCP2-110
	12.0			RCP1-112	RCP2-112
	12.7	G 1/4	1/2	RCP1-112.7	RCP2-112.7
	13.5			RCP1-113.5	RCP2-113.5
	14.0			RCP1-114	RCP2-114
	15.0			RCP1-115	RCP2-115
	16.0	G 3/8	5/8	RCP1-116	RCP2-116
2	17.2			RCP1-117.2	RCP2-117.2
	18.0			RCP1-118	RCP2-118
	19.0		3/4	RCP1-219	RCP2-219
	20.0			RCP1-220	RCP2-220
	21.3	G 1/2		RCP1-221.3	RCP2-221.3
	22.0			RCP1-222	RCP2-222
	23.0			RCP1-223	RCP2-223
	25.0			RCP1-225	RCP2-225
	25.4		1	RCP1-225.4	RCP2-225.4
	26.9	G 3/4		RCP1-226.9	RCP2-226.9
3	28.0			RCP1-228	RCP2-228
	30.0			RCP1-230	RCP2-230
	30.0			RCP1-330	RCP2-330
	32.0		1 1/4	RCP1-332	RCP2-332
	33.7	G 1		RCP1-333.7	RCP2-333.7
	35.0			RCP1-335	RCP2-335
4	38.0		1 1/2	RCP1-338	RCP2-338
	40.0			RCP1-340	RCP2-340
	42.0	G 1 1/4		RCP1-342	RCP2-342
	38.0		1 1/2	RCP1-438	RCP2-438
	40.0			RCP1-440	RCP2-440
	42.0	G 1 1/4		RCP1-442	RCP2-442
	45.0			RCP1-445	RCP2-445
	48.3	G 1 1/2		RCP1-448.3	RCP2-448.3
	50.0			RCP1-450	RCP2-450
	51.0		2	RCP1-451	RCP2-451
5	52.0			RCP1-452	RCP2-452
	55.0			RCP1-455	RCP2-455
	57.0		2 1/4	RCP1-457	RCP2-457
	60.3	G 2		RCP1-460.3	RCP2-460.3
	63.0		2 1/2	RCP1-463	RCP2-463
	65.0			RCP1-465	RCP2-465
	70.0			RCP1-470	RCP2-470

Continuation see next page ...

## Tube clamps series C – Complete range (Continued)

### Order codes for clamp halves:

Material	Interior surface	Order code
Polypropylene	grooved	RCP
	smooth	RCPG <sup>1)</sup>
Polyamide	grooved	RCN
	smooth	RCNG <sup>1)</sup>
Rubber	grooved	RCVR <sup>1)2)</sup>
	smooth	RCVG <sup>1)2)</sup>
Aluminium	grooved	RCA

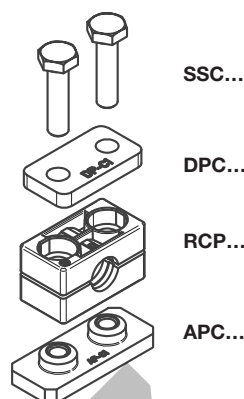
(Please exchange as required standard abbreviation RCP in column for "Order code")

For flame- or corrosion retardant materials, please refer to page T5.

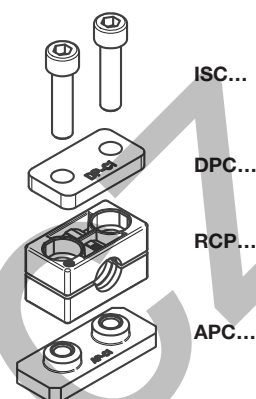
The steel parts of kits 1 and 2 are phosphated.

Other compositions available on request.

2 clamp halves, weld plate,  
cover plate, hex. head bolt



2 clamp halves, weld plate,  
cover plate, socket head bolt



clamp size	Tube O.D. mm	Tube NB	Tube O.D.	Order code	Order code
5	65.0	G 2 1/2	3	RCP1-565	RCP2-565
	70.0			RCP1-570	RCP2-570
	73.0			RCP1-573	RCP2-573
	75.0			RCP1-575	RCP2-575
	76.1			RCP1-576.1	RCP2-576.1
	80.0	G 3	3 1/4	RCP1-580	RCP2-580
	82.5			RCP1-582.5	RCP2-582.5
	85.0			RCP1-585	RCP2-585
	88.0			RCP1-588	RCP2-588
	88.9			RCP1-588.9	RCP2-588.9
6	90.0	G 3 1/2	4	RCP1-590	RCP2-590
	97.0			RCP1-690	RCP2-690
	100.0			RCP1-697	RCP2-697
	101.6			RCP1-6100	RCP2-6100
	108.0	G 4	4 1/4	RCP1-6101.6	RCP2-6101.6
	114.3			RCP1-6108	RCP2-6108
	115.0			RCP1-6114.3	RCP2-6114.3
	120.0			RCP1-6115	RCP2-6115
	127.0			RCP1-6120	RCP2-6120
	127.0	G 5	5	RCP1-6127	RCP2-6127
7	130.0		5 1/4	RCP1-7127	RCP2-7127
	133.0			RCP1-7130	RCP2-7130
	140.0			RCP1-7133	RCP2-7133
	150.0			RCP1-7140	RCP2-7140
	152.4	G 5 1/2	6	RCP1-7150	RCP2-7150
	159.0			RCP1-7152.4	RCP2-7152.4
	165.1			RCP1-7159	RCP2-7159
	168.3			RCP1-7165.1	RCP2-7165.1
	168.3	G 6	6 1/4	RCP1-7168.3	RCP2-7168.3
8	177.8			RCP1-8168.3	RCP2-8168.3
	190.0			RCP1-8177.8	RCP2-8177.8
	193.7			RCP1-8190	RCP2-8190
	203.0			RCP1-8193.7	RCP2-8193.7
	219.1			RCP1-8203	RCP2-8203
	220.0	G 8	8 5/8	RCP1-8219.1	RCP2-8219.1
	219.1			RCP1-8220	RCP2-8220
	244.5			RCP1-9219.1	RCP2-9219.1
	273.0			RCP1-9244.5	RCP2-9244.5
	323.9			RCP1-9273	RCP2-9273
9	323.9	G 10	10 3/4	RCP1-9323.9	RCP2-9323.9
	323.9	G 12	12 3/4		
10	355.6	G 14		RCP1-10355.6	RCP2-10355.6
	406.4	G 16		RCP1-10406.4	RCP2-10406.4

Delivery in unassembled individual components.

<sup>1)</sup> Only sizes 1–8

<sup>2)</sup> When assembling solid rubber clamps, covering plates, hexagon screws and locking washers must be used.



## Tube clamps series C – Complete range

### Order codes for clamp halves:

Material	Interior surface	Order code
Polypropylene	grooved	RCP
	smooth	RCPG <sup>1)</sup>
Polyamide	grooved	RCN
	smooth	RCNG <sup>1)</sup>
Rubber	grooved	RCVR <sup>1)2)</sup>
	smooth	RCVG <sup>1)2)</sup>
Aluminium	grooved	RCA

(Please exchange as required standard abbreviation RCP in column for "Order code")

For flame- or corrosion retardant materials, please refer to page T5.

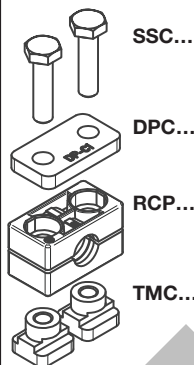
The steel parts of kits 3, 4 and 5 have the following surfaces:

Bolts, cover plate, locking plate = phosphated

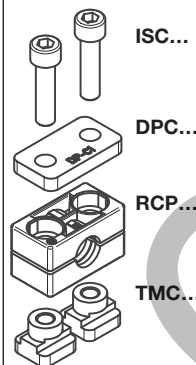
Rail nuts = Cr(VI)-free galvanized

Other compositions available on request.

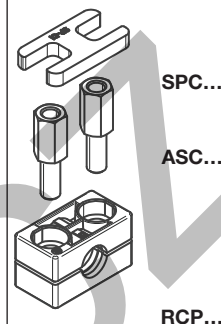
2 clamp halves,  
rail nuts, cover plate,  
hex. head bolts



2 clamp halves,  
rail nuts, cover plate,  
socket head bolts



2 clamp halves, lock-  
ing plate, stacking  
bolts



clamp size	Tube O.D. mm	Tube NB	Tube O.D.	Order code	Order code	Order code
1	6.0			RCP3-106	RCP4-106	RCP5-106
	8.0		5/16	RCP3-108	RCP4-108	RCP5-108
	9.5	G 1/8	3/8	RCP3-109.5	RCP4-109.5	RCP5-109.5
	10.0			RCP3-110	RCP4-110	RCP5-110
	12.0		1/2	RCP3-112	RCP4-112	RCP5-112
	12.7	G 1/4		RCP3-112.7	RCP4-112.7	RCP5-112.7
	13.5			RCP3-113.5	RCP4-113.5	RCP5-113.5
	14.0			RCP3-114	RCP4-114	RCP5-114
	15.0		5/8	RCP3-115	RCP4-115	RCP5-115
	16.0	G 3/8		RCP3-116	RCP4-116	RCP5-116
2	17.2			RCP3-117.2	RCP4-117.2	RCP5-117.2
	18.0			RCP3-118	RCP4-118	RCP5-118
	19.0		3/4	RCP3-219	RCP4-219	RCP5-219
	20.0			RCP3-220	RCP4-220	RCP5-220
	21.3	G 1/2		RCP3-221.3	RCP4-221.3	RCP5-221.3
	22.0			RCP3-222	RCP4-222	RCP5-222
	23.0		1	RCP3-223	RCP4-223	RCP5-223
	25.0			RCP3-225	RCP4-225	RCP5-225
	25.4			RCP3-225.4	RCP4-225.4	RCP5-225.4
	26.9	G 3/4		RCP3-226.9	RCP4-226.9	RCP5-226.9
3	28.0			RCP3-228	RCP4-228	RCP5-228
	30.0			RCP3-230	RCP4-230	RCP5-230
	30.0		1 1/4	RCP3-330	RCP4-330	RCP5-330
	32.0			RCP3-332	RCP4-332	RCP5-332
	33.7	G 1		RCP3-333.7	RCP4-333.7	RCP5-333.7
	35.0			RCP3-335	RCP4-335	RCP5-335
	38.0		1 1/2	RCP3-338	RCP4-338	RCP5-338
4	40.0			RCP3-340	RCP4-340	RCP5-340
	42.0	G 1 1/4		RCP3-342	RCP4-342	RCP5-342
	38.0		1 1/2	RCP3-438	RCP4-438	RCP5-438
	40.0			RCP3-440	RCP4-440	RCP5-440
	42.0	G 1 1/4		RCP3-442	RCP4-442	RCP5-442
	45.0			RCP3-445	RCP4-445	RCP5-445
	48.3	G 1 1/2		RCP3-448.3	RCP4-448.3	RCP5-448.3
	50.0			RCP3-450	RCP4-450	RCP5-450
	51.0		2	RCP3-451	RCP4-451	RCP5-451
	52.0			RCP3-452	RCP4-452	RCP5-452
	55.0			RCP3-455	RCP4-455	RCP5-455
	57.0		2 1/4	RCP3-457	RCP4-457	RCP5-457
	60.3	G 2		RCP3-460.3	RCP4-460.3	RCP5-460.3
	63.0		2 1/2	RCP3-463	RCP4-463	RCP5-463
	65.0			RCP3-465	RCP4-465	RCP5-465
	70.0			RCP3-470	RCP4-470	RCP5-470

Continuation see next page ...



## Tube clamps series C – Complete range (Continued)

**Order codes for clamp halves:**

Material	Interior surface	Order code
Polypropylene	grooved	<b>RCP</b>
	smooth	<b>RCPG<sup>1)</sup></b>
Polyamide	grooved	<b>RCN</b>
	smooth	<b>RCNG<sup>1)</sup></b>
Rubber	grooved	<b>RCVR<sup>1)2)</sup></b>
	smooth	<b>RCVG<sup>1)2)</sup></b>
Aluminium	grooved	<b>RCA</b>

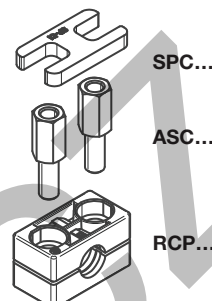
(Please exchange as required standard abbreviation RCP in column for "Order code")

For flame- or corrosion retardant materials, please refer to page T5.

The steel parts of kits 5 are phosphated.

Other compositions available on request.

2 clamp halves, locking plate, stacking bolts



clamp size	Tube O.D. mm	Tube NB	Tube O.D.	Order code
5	65.0	G 2 1/2	3	<b>RCP5-565</b>
	70.0			<b>RCP5-570</b>
	73.0			<b>RCP5-573</b>
	75.0			<b>RCP5-575</b>
	76.1			<b>RCP5-576.1</b>
	80.0	G 3	3 1/4	<b>RCP5-580</b>
	82.5			<b>RCP5-582.5</b>
	85.0			<b>RCP5-585</b>
	88.0			<b>RCP5-588</b>
	88.9			<b>RCP5-588.9</b>
6	90.0	G 3 1/2	4	<b>RCP5-590</b>
	97.0			<b>RCP5-690</b>
	100.0			<b>RCP5-697</b>
	101.6			<b>RCP5-6100</b>
	108.0	G 4	4 1/4	<b>RCP5-6101.6</b>
	114.3			<b>RCP5-6108</b>
	115.0			<b>RCP5-6114.3</b>
	120.0			<b>RCP5-6115</b>
	127.0			<b>RCP5-6120</b>
7	127.0	G 5	5	<b>RCP5-6127</b>
	130.0			<b>RCP5-7127</b>
	133.0			<b>RCP5-7130</b>
	140.0			<b>RCP5-7133</b>
	150.0	G 5 1/2	5 1/2	<b>RCP5-7140</b>
	152.4			<b>RCP5-7150</b>
	159.0			<b>RCP5-7152.4</b>
	165.1			<b>RCP5-7159</b>
	168.3	G 6	6	<b>RCP5-7165.1</b>
8	168.3			<b>RCP5-7168.3</b>
	177.8			<b>RCP5-8168.3</b>
	190.0			<b>RCP5-8177.8</b>
	193.7			<b>RCP5-8190</b>
	203.0			<b>RCP5-8193.7</b>
	219.1	G 8	6 1/4	<b>RCP5-8203</b>
	220.0			<b>RCP5-8219.1</b>
			6 5/8	<b>RCP5-8220</b>

**Delivery in unassembled individual components.**

<sup>1)</sup> Only sizes 1–8

<sup>2)</sup> When assembling solid rubber clamps, covering plates, hexagon screws and locking washers must be used.