

Tube clamps series 2+5 (Light construction series)

DIN 3015, Part 1, Components

Order codes

for clamp-halves:

Polypropylen **RAP**
inside smooth **RAPG**

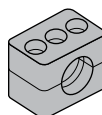
Polyamid 6 **RAN**
inside smooth **RANG**

Rubber **RAVG**

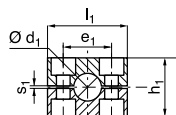
Replace standard abbreviation RAP in column "clamp halves" as required.



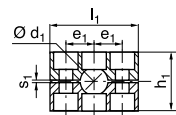
Size 2



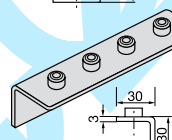
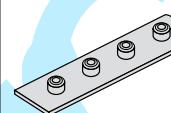
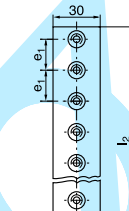
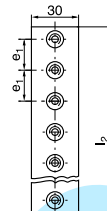
Size 5



Size 2



Size 5



Clamp size	O.D. mm	Tube NB	Inch O.D.	1 part 2 clamp-halves	2 clamp-halves				Multiple weld plate		Multiple weld plate, angled	
	d ₁			RAP Order code	l ₁	h ₁	e ₁	s ₁	e ₁	l ₂	e ₁	l ₂
2	6.0	G 1/8	1/4	RAP206X	40	33	26	0.8	26	508	26	508
	6.4			RAP206.4X								
	8.0			RAP208X								
	9.5			RAP209.5X								
	10.0			RAP210X								
	12.0	G 1/4	1/2	RAP212X								
	12.7			RAP212.7X								
	13.5			RAP213.5X								
	14.0			RAP214X								
	15.0			RAP215X								
16.0	G 3/8	5/8	RAP216X									
17.2			RAP217.2X									
18.0			RAP218X									
5		19.0	3/4	RAP519X	70	58	26	1.2				
		20.0	G 1/2	RAP520X								
	21.3	RAP521.3X										
	22.0	RAP522X										
	23.0	RAP523X										
	25.0	G 3/4		RAP525X								
	26.9		RAP526.9X									
	28.0		RAP528X									
	30.0		RAP530X									
	32.0	G 1	1 1/4	RAP532X								
	33.7		RAP533.7X									
	35.0		RAP535X									
	38.0		1 1/2	RAP538X								
	40.0	G 1 1/4		RAP540X								
	42.0			RAP542X								

When assembling solid rubber clamps, cover plates, hexagon screws and locking washers must be used.
All metal parts available in stainless steel.