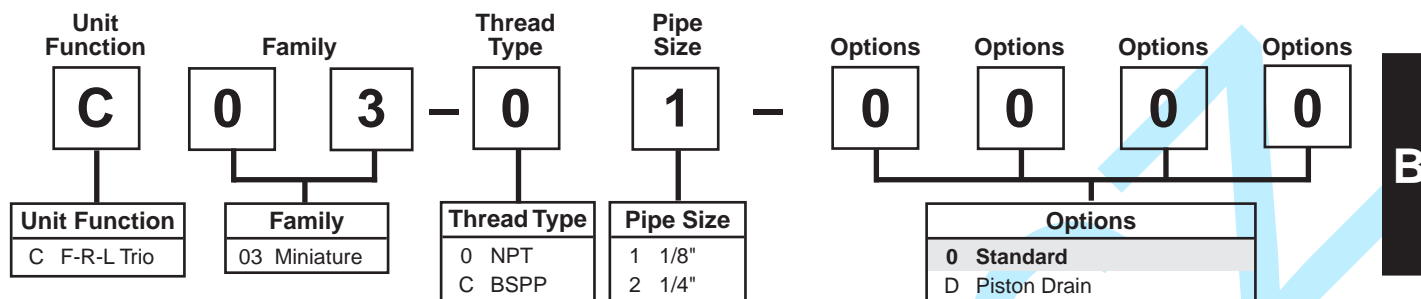


# Combination Numbering System

0 = "Most Popular"

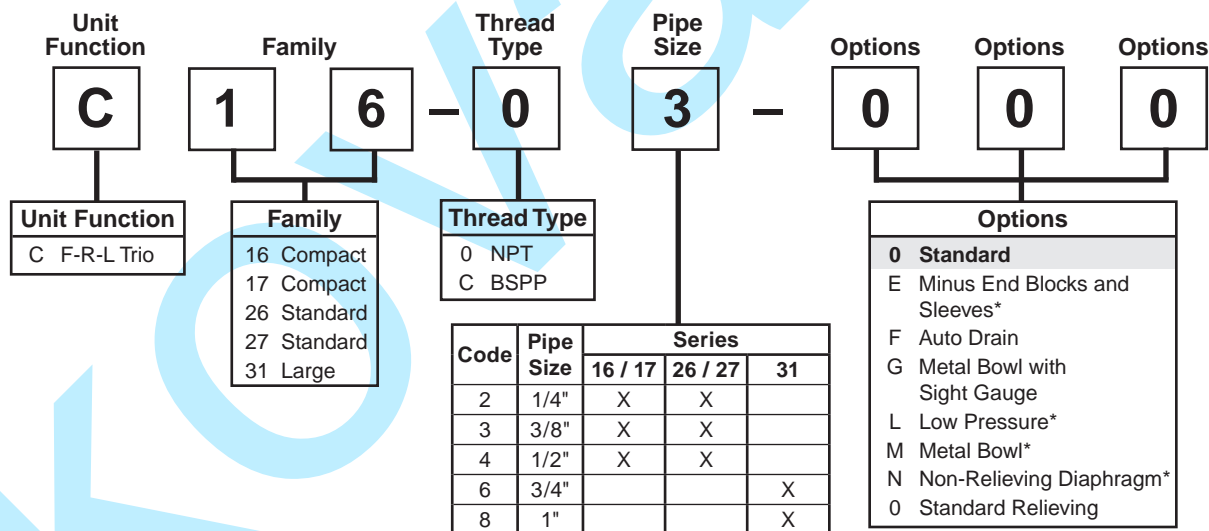


Note: When selecting from the options columns, please enter letters in alphabetical order for positions 6, 7, 8, and 9.

For example: **M 0 3 - 0 1 - D M 0 0**

NOTE: 0000 in position 6, 7, 8 and 9 signifies standard product.  
(Poly Bowl, Manual Drain on Filter, no Drain on Lubricator, 2 to 125 PSIG, Relieving)

\* Not available with BSPP thread type.



\* Not available with C31 Series.

"F" Series Filters, Type "A" 5 micron elements: All Wilkerson Type "A" 5 micron elements meet or exceed ISO Class 3 for maximum particle size and concentration of solid contaminants.

Note: All classes above refer to International Standards Organization (ISO) standard 8573-1, pertaining to maximum particle size and concentration of solid contaminants, and maximum oil content.

NOTE: When selecting from the options columns, please enter letters in alphabetical order for positions 6, 7, 8. For example:

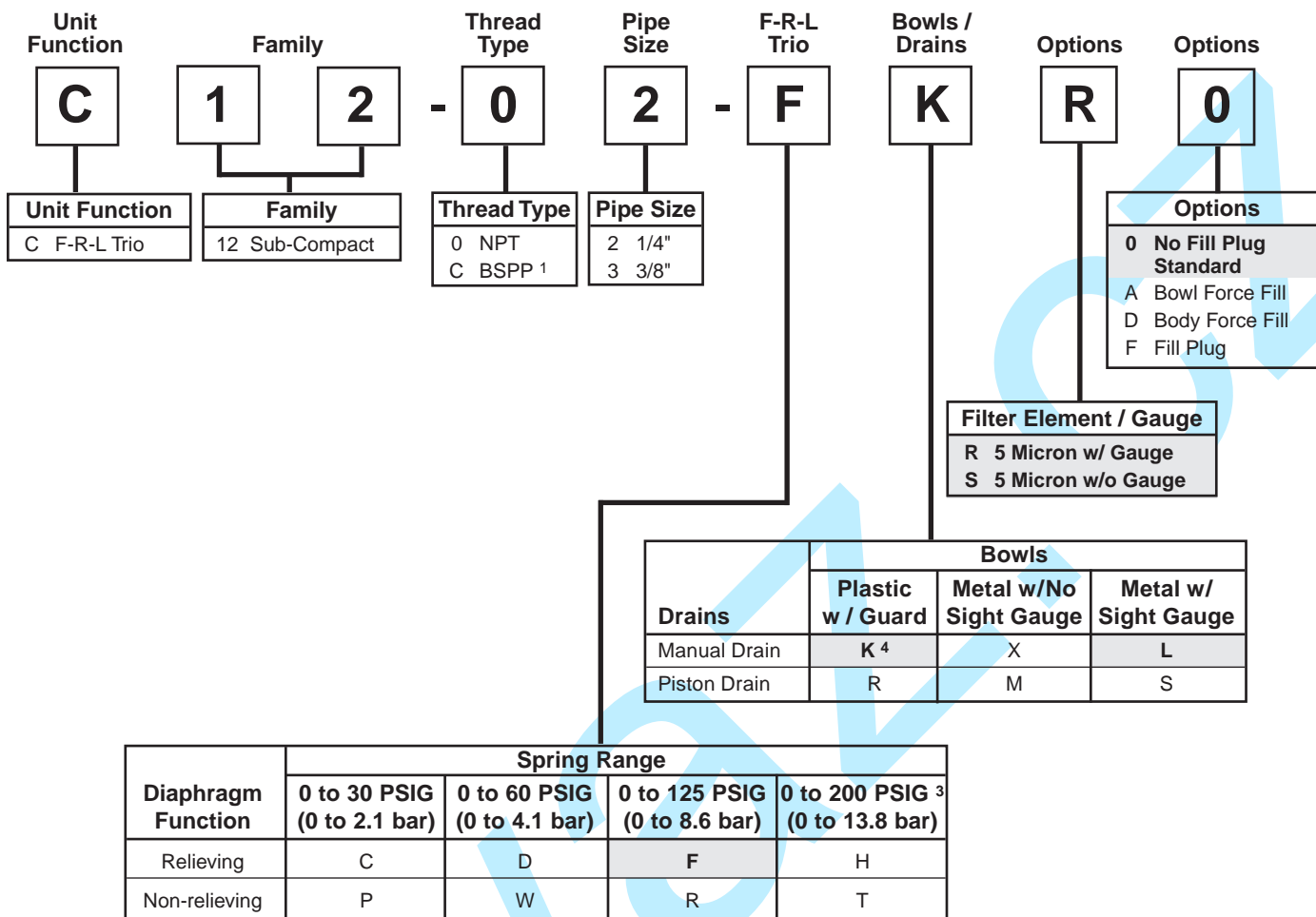
**C 1 6 - 0 3 - 0 0 0**



# Combination Numbering System

  = "Most Popular"

B



<sup>1</sup> ISO, R228 (G Series)

<sup>3</sup> 0 to 200 PSI (0 to 13,8 bar) pressure range available only on units with metal bowl.

<sup>4</sup> Filter bowl selection only. Lubricator bowl material same as filter bowl (plastic or metal). Plastic lubricator bowl comes with closed-end bowl as standard. Metal lubricator bowl comes with manual drain standard.

**NOTE:** When selecting from the options columns, please enter letters in alphabetical order for positions 7, 8, 9.  
**For example:**

**C 1 2 - 0 2 - F K R 0**

**"F" Series Filters, Type "A" 5 micron elements:** All Wilkerson Type "A" 5 micron elements **meet or exceed** ISO Class 3 for maximum particle size and concentration of solid contaminants.

**NOTE:** All classes above refer to International Standards Organization (ISO) standard 8573-1, pertaining to maximum particle size and concentration of solid contaminants, and maximum oil content.



# Combination Numbering System

   = "Most Popular"

**Unit Function**

C

Unit Function  
C F-R-L Trio

**Family**

1

8

Family  
08 Miniature  
18 Compact  
28 Standard  
39 Jumbo

**Thread Type**

0

Thread Type  
0 NPT  
C BSPP <sup>3</sup>

**Pipe Size**

3

**F-R-L Trio**

F

**Bowls / Drains**

K

**Options**

G

**Options**

0

Code	Pipe Size	Series			
		08	18	28	39
1	1/8"	X			
2	1/4"	X	X		
3	3/8"		X	X	
4	1/2"		X	X	
6	3/4"			X	X
8	1"				X

Diaphragm Function	Fluorocarbon	Spring Range			
		0 to 30 PSIG <sup>1</sup> (0 to 2.1 bar)	0 to 60 PSIG <sup>1</sup> (0 to 4.1 bar)	0 to 125 PSIG (0 to 8.6 bar)	0 to 250 PSIG <sup>1,5</sup> (0 to 17.2 bar)
Relieving	No	C	D	<b>F</b>	G
	Yes	J	K	L <sup>1</sup>	M
Non-relieving <sup>1</sup>	No	P	W	R	S
	Yes	V	X	Y	Z

**Wilkerson Combination Models Are Offered With The T-bracket(s) As Standard.**

Drains	Bowls	
	Plastic w / Guard <sup>1</sup> Nitrile Standard	Metal w / Sight Gauge <sup>4</sup> Nitrile Standard
None <sup>1</sup>	C	D
Automatic Drain <sup>5</sup>	<b>G</b>	H
Manual Drain	<b>K</b>	L
Piston Drain (08 Series Only)	R	S

**Options**

**0 None**

C Tamper Resistant Regulator Kit <sup>1,2</sup>

D Force Fill Adapter <sup>1</sup>

**G Pressure Gauge**

L Differential Pressure Indicator <sup>1,5</sup>

R Electronic Differential Pressure Indicator (18 & 28 Series Only)

T Tamper Resistant Lube Cap <sup>1</sup>

V Fluorocarbon <sup>1</sup>

**Options**

**0 None**

B Add End Blocks <sup>1</sup>

C Tamper Resistant Regulator Kit <sup>1,2</sup>

D Force Fill Adapter <sup>1</sup>

**G Pressure Gauge**

L Differential Pressure Indicator <sup>1,5</sup>

P Metal Panel Nut <sup>1</sup>

T Tamper Resistant Lube Cap <sup>1</sup>

V Fluorocarbon <sup>1</sup>

<sup>1</sup> Not Available on 39 Series.

<sup>2</sup> Tamper resistant kit not installed. Kit shipped loose in carton.

<sup>3</sup> ISO, R228 (G Series).

<sup>4</sup> 08 series has all metal bowl (no sight gauge).

<sup>5</sup> Not Available on 08 Series.

**"F" Series Filters, Type "A" 5 micron elements:** All Wilkerson Type "A" 5 micron elements **meet or exceed** ISO Class 3 for maximum particle size and concentration of solid contaminants.

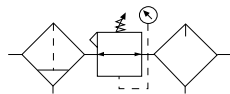
**NOTE:** All classes above refer to International Standards Organization (ISO) standard 8573-1, pertaining to maximum particle size and concentration of solid contaminants, and maximum oil content.

**NOTE:** When selecting from the options columns, please enter letters in alphabetical order for positions 7, 8, 9. For example:

**C 1 8 - 0 3 - F K G 0**



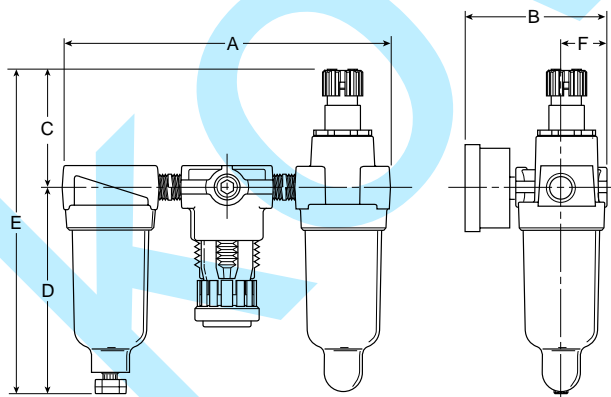
# Combination C03

 = "Most Popular"


C03-02-0000

## Features

- Excellent Water Removal Efficiency
- Unbalanced Poppet Standard
- Solid Control Piston for Extended Life
- Non-rising Adjustment Knob
- Two Full Flow 1/8" Gauge Ports
- Proportional Oil Delivery over a Wide Range of Air Flows
- Precision Needle Valve Assures Repeatable Oil Delivery and Provides Simple Adjustment of Delivery Rate
- Ideal for Low and Light flow Applications with Changing Air Flow
- Transparent Sight Dome for 360° Visibility
- Regulator can be mounted with knob in up or down position. (Factory supplied in down position)



## Dimensions

Model	Inches (mm)	A	B	C	D	E	F
Standard Unit C03-XX-XXXX		5.77 (147)	2.83 (71.9)	2.16 (55)	3.82 (97)	5.98 (52)	.79 (20)

## Specifications

Flow Capacity*	1/8	20 SCFM (9.4 dm <sup>3</sup> /s)
	1/4	20 SCFM (9.4 dm <sup>3</sup> /s)
Gauge Ports (2)	1/8	
Minimum Flow for Lubrication	0.7 SCFM at 100 PSIG	
Port Threads	1/8, 1/4	
Pressure & Temperature Ratings –		
Plastic Bowl	0 to 150 PSIG (0 to 10.3 bar) 32°F to 125°F (0°C to 52°C)	
Metal Bowl	0 to 250 PSIG (0 to 17.2 bar) 32°F to 175°F (0°C to 80°C)	
Secondary Pressure Ranges –		
Standard Pressure	2 to 125 PSIG (0 to 8.6 bar)	
Medium Pressure	1 to 60 PSIG (0 to 4.1 bar)	
Medium Pressure	1 to 30 PSIG (0 to 2.1 bar)	
Low Pressure	1 to 15 PSIG (0 to 1.0 bar)	
Weight	.9 lb. (.36 kg)	

\* Inlet pressure 100 PSIG (6.9 bar). Secondary pressure 90 PSIG (6.2 bar).

**"F" Series Filters, Type "A" 5 micron elements:** All Wilkerson Type "A" 5 micron elements **meet or exceed ISO Class 3** for maximum particle size and concentration of solid contaminants.


## Materials of Construction

Adjusting Nut	Brass
Adjusting Stem & Spring	Steel
Body	Zinc
Bonnet, Knob, Seat, Piston, Holder & Deflector	Plastic
Bowls –	
Transparent	Polycarbonate
Metal (Without Sight Gauge)	Zinc
Filter Elements – 5 Micron (Standard)	Plastic
Manual Drain –	
Body & Stem	Plastic
Seals	Nitrile
Piston Drain –	
Piston & Seals	Nitrile
Stem, Seat, Adaptor & Washers	Aluminum
Seals	Nitrile
Sight Dome	Polycarbonate
Suggested Lubricant	Airline Oil F442001



= “Most Popular”

**Note:** For Kits and Repair Parts, see individual pages for Filters, Regulators, and Lubricators.

 **WARNING**

Product rupture can cause serious injury.  
Do not connect regulator to bottled gas.  
Do not exceed maximum primary pressure rating.

**CAUTION:**

**REGULATOR PRESSURE ADJUSTMENT** – The working range of knob adjustment is designed to permit outlet pressures within their full range. Pressure adjustment beyond this range is also possible because the knob is not a limiting device. This is a common characteristic of most industrial regulators, and limiting devices may be obtained only by special design.

For best performance, regulated pressure should always be set by increasing the pressure up to the desired setting.

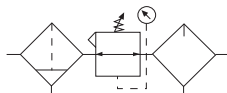
Ordering Information

Model Type	Port Size	Plastic Bowl with Gauge	Plastic Bowl without Gauge	Metal Bowl with Gauge	Metal Bowl without Gauge
Manual Drain	1/8	C03-01-G000	C03-01-0000	C03-01-GM00	C03-01-M000
	1/4	C03-02-G000	C03-02-0000	C03-02-GM00	C03-02-M000

Options - To order an option supplied with the unit model, add the appropriate coded suffix letter in the designated position of the model number.



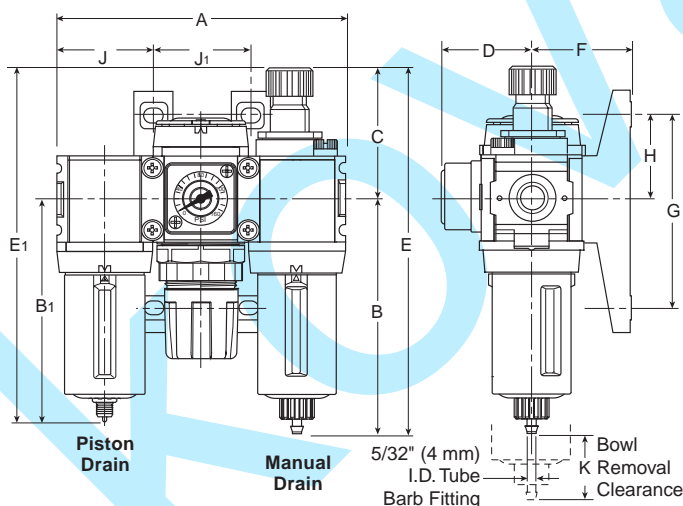
# Combination C08



**C08-02-FKG0**

## Features

- Components Integrated into Single Unit
- Modern Design and Appearance
- Light Weight, Ready-to-Mount Assembly Comes Standard with Flush-Mount Pressure Gauge and Modular T-bracket / Joiner Assembly
- High Flow Capacity
- Quick-Disconnect Bowl / Bowl Guard



## Dimensions

Models	Inches (mm)	A	B	B <sub>1</sub>	C	D	E	E	F	G	H	J	J <sub>1</sub>
Standard Unit C08-XX-FKG0		4.72 (120)	3.75 (95)	—	2.25 (57)	1.47 (37)	6.00 (152)	—	1.61 (41)	3.15 (80)	1.37 (35)	1.57 (40)	1.57 (40)
Piston Drain C08-XX-FRG0		4.72 (120)	—	3.53 (90)	2.25 (57)	1.47 (37)	—	5.78 (147)	1.61 (41)	3.15 (80)	1.37 (35)	1.57 (40)	1.57 (40)

## Specifications

Flow Capacity*	1/8	29 SCFM (13.7 dm <sup>3</sup> /s)
	1/4	44 SCFM (20.8 dm <sup>3</sup> /s)
Gauge Port (2 ea.)** NPT		1/8
Maximum Supply Pressure	Plastic Bowl	150 PSIG (10.3 bar)
	Metal Bowl	250 PSIG (17.2 bar)
Operating Temperature	Plastic Bowl	32° to 125°F (0° to 52°C)
	Metal Bowl	32° to 150°F (0° to 65.5°C)
Port Size	NPT / BSPP-G 1/8, 1/4	
Standard Filtration	5 Micron	
Weight	1.96 lb. (0.9 kg)	

\* Inlet pressure 100 PSIG (6.9 bar). Secondary pressure 90 PSIG (6.2 bar).

\*\* Non-gauge option only.

**"F" Series Filters, Type "A" 5 micron elements:** All Wilkerson Type "A" 5 micron elements **meet or exceed ISO Class 3** for maximum particle size and concentration of solid contaminants.


## Materials of Construction

Body	Zinc	
Bonnet	PBT	
Bowl	Plastic Bowl	Polycarbonate
	Metal Bowl	Zinc
Bowl Guard	Nylon	
Diaphragm Assembly	Brass / Nitrile	
Filter Element	Polyethylene	
Knob	Acetal	
Seals	Plastic Bowl	Nitrile
	Metal Bowl	Nitrile
Sight Dome	Polycarbonate	
Springs	Steel	
Suggested Lubricant	Airline Oil F442001	
Valve	Brass / Nitrile	



= "Most Popular"

**Note:** For Kits and Repair Parts, see individual pages for Filters, Regulators, and Lubricators.



**WARNING**

Product rupture can cause serious injury.  
Do not connect regulator to bottled gas.  
Do not exceed maximum primary pressure rating.

**CAUTION:**

**REGULATOR PRESSURE ADJUSTMENT** – The working range of knob adjustment is designed to permit outlet pressures within their full range. Pressure adjustment beyond this range is also possible because the knob is not a limiting device. This is a common characteristic of most industrial regulators, and limiting devices may be obtained only by special design.

For best performance, regulated pressure should always be set by increasing the pressure up to the desired setting.

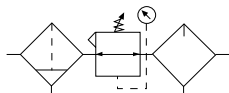
**Ordering Information**

Model Type	Port Size	Plastic Bowl / Bowl Guard / Without Gauge 0 to 125 PSI (0 to 8.6 bar)	Plastic Bowl / Bowl Guard / With Gauge 0 to 125 PSI (0 to 8.6 bar)	Metal Bowl / Without Gauge 0 to 125 PSI (0 to 8.6 bar)	Metal Bowl / With Gauge 0 to 125 PSI (0 to 8.6 bar)
Manual Drain	1/8	C08-01-FK00	C08-01-FKG0	C08-01-FL00	C08-01-FLG0
	1/4	C08-02-FK00	C08-02-FKG0	C08-02-FL00	C08-02-FLG0
Piston Drain	1/8	C08-01-FR00	C08-01-FRG0	C08-01-FS00	C08-01-FSG0
	1/4	C08-02-FR00	C08-02-FRG0	C08-02-FS00	C08-02-FSG0

**Options** - To order an option supplied with the unit model, add the appropriate coded suffix letter in the designated position of the model number.



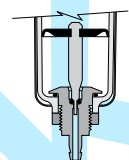
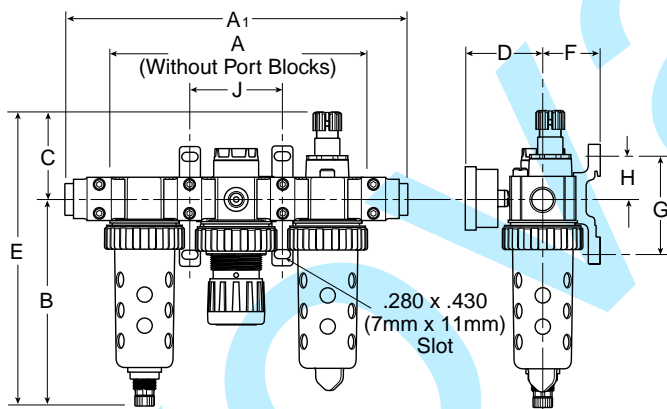
# Combination C12



**C12-02-FKS0**

## Features

- Regulator Can Be Mounted With Knob in Up or Down Position
- See Individual Component Pages for Details
- Port Blocks, Manifold Blocks and Ball Valve Must Be Ordered Separately



**NOTE:** Barb (Piston Drain) accepts 3/16" ID tubing.

## Dimensions

Model	Inches (mm)	A	A <sub>1</sub>	B	C	D	E	F	G	H	J
Standard Unit C12-XX-FKS0		5.70 (170)	8.72 (222)	5.35 (136)	2.24 (57)	2.05 (52)	7.59 (193)	1.45 (37)	2.60 (66)	1.14 (29)	2.35 (60)
Piston Drain C12-XX-FRS0		5.70 (170)	8.72 (222)	5.35 (136)	2.24 (57)	2.05 (52)	7.59 (193)	1.45 (37)	2.60 (66)	1.14 (29)	2.35 (60)

= "Most Popular"

## Specifications

Flow Capacity*	1/4	40 SCFM (18.9 dm <sup>3</sup> /s)
	3/8	40 SCFM (18.9 dm <sup>3</sup> /s)
Gauge Ports (2x)	NPT / BSPP-G 1/4	
Maximum Supply Pressure	Plastic Bowl	150 PSIG (10.3 bar)
	Metal Bowl	250 PSIG (17.2 bar)
Operating Temperature	Plastic Bowl	32° to 125°F (0° to 52°C)
	Metal Bowl	32° to 175°F (0° to 80°C)
Port Size	NPT / BSPP-G 1/4, 3/8	
Standard Filtration	5 Micron	
Weight	3.72 lb. (1.69 kg)	

\* Inlet pressure 100 PSIG (7 bar). Secondary pressure 90 PSIG (6.2 bar).

**"F" Series Filters, Type "A" 5 micron elements:** All Wilkerson Type "A" 5 micron elements **meet or exceed** ISO Class 3 for maximum particle size and concentration of solid contaminants.


## Materials of Construction

Body	Zinc	
Bowl Guard	Steel	
Bowls	Plastic Bowl	Polycarbonate
	Metal Bowl	Zinc
Collar	Plastic	
Drain-Manual	Body & Nut	Plastic
Seals	Nitrile	
Sight Dome	Polycarbonate	
Sight Gauge	Metal Bowl	Polyamide (Nylon)
Suggested Lubricant	Airline Oil F442001	



= "Most Popular"

**Note:** For Kits and Repair Parts, see individual pages for Filters, Regulators, and Lubricators.



**WARNING**

Product rupture can cause serious injury.  
Do not connect regulator to bottled gas.  
Do not exceed maximum primary pressure rating.

**CAUTION:**

**REGULATOR PRESSURE ADJUSTMENT** – The working range of knob adjustment is designed to permit outlet pressures within their full range. Pressure adjustment beyond this range is also possible because the knob is not a limiting device. This is a common characteristic of most industrial regulators, and limiting devices may be obtained only by special design.

For best performance, regulated pressure should always be set by increasing the pressure up to the desired setting.

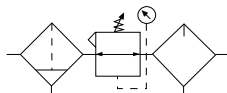
**Ordering Information**

Model Type	Port Size	Plastic Bowl / Bowl Guard / Without Gauge 0 to 125 PSI (0 to 8.6 bar)	Plastic Bowl / Bowl Guard / With Gauge 0 to 125 PSI (0 to 8.6 bar)	Metal Bowl / Sight Gauge / Without Gauge 0 to 125 PSI (0 to 8.6 bar)	Metal Bowl / w/o Sight Gauge / With Gauge 0 to 125 PSI (0 to 8.6 bar)
Manual Drain	1/4	C12-02-FKS0	C12-02-FKR0	C12-02-FLS0	C12-02-FLR0
	3/8	C12-03-FKS0	C12-03-FKR0	C12-03-FLS0	C12-03-FLR0
Piston Drain	1/4	C12-02-FRS0	C12-02-FRR0	C12-02-FSS0	C12-02-FSR0
	3/8	C12-03-FRS0	C12-03-FRR0	C12-03-FSS0	C12-03-FSR0

**Options** - To order an option supplied with the unit model, add the appropriate coded suffix letter in the designated position of the model number.



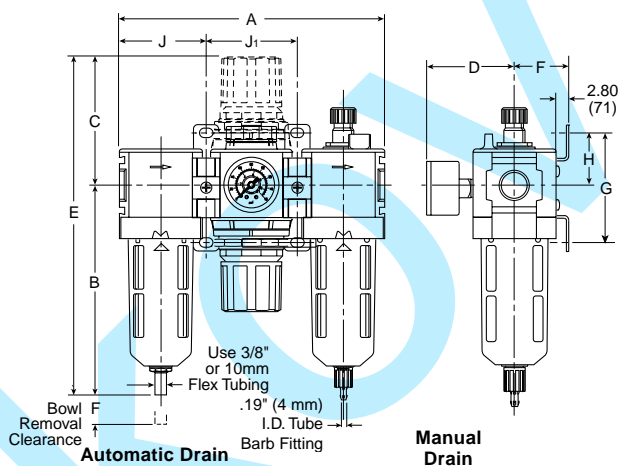
# Combination C18



**C18-03-FKG0**

## Features

- Components Integrated into Single Unit
- Modern Design and Appearance
- Light Weight, Ready-to-Mount Assembly Comes Standard with Pressure Gauge and Modular T-Bracket / Joiner Assembly
- High Flow Capacity
- Quick-Disconnect Bowl / Bowl Guard
- Joiner Assembly / Connector Patent No. 5,383,689



## Dimensions

Models	Inches (mm)	A	B	C	D	E	F	G	H	J	J <sub>1</sub>
Standard Unit with Gauge C18-XX-FKG0		7.77 (197)	4.69 (119)	3.66 (93)	2.57 (65)	8.35 (212)	1.62 (41)	3.25 (83)	1.62 (41)	2.53 (64)	2.70 (69)
Standard Unit with Automatic Drain and Gauge C18-XX-FGG0		7.77 (197)	4.46 (113)	3.66 (93)	2.57 (65)	8.12 (206)	1.62 (41)	3.25 (83)	1.62 (41)	2.53 (64)	2.70 (69)
With End Blocks		10.45 (265)	—	—	—	—	—	—	—	3.87 (98)	—

## Specifications

Flow Capacity*	1/4	110 SCFM (51.9 dm <sup>3</sup> /s)
	3/8	160 SCFM (75.5 dm <sup>3</sup> /s)
	1/2	160 SCFM (75.5 dm <sup>3</sup> /s)

Gauge Port (2 ea.)	NPT / BSPP-G	1/4
Maximum Supply Pressure	Plastic Bowl	150 PSIG (10.3 bar)
	Metal Bowl	250 PSIG (17.2 bar)
Operating Temperature	Plastic Bowl	32° to 125°F (0° to 52°C)
	Metal Bowl	32° to 150°F (0° to 65.5°C)
Port Size	NPT / BSPP-G	1/4, 3/8, 1/2
Standard Filtration	5 Micron	
Weight	4.04 lb. (1.83 kg)	

\* Inlet pressure 150 PSIG (10.3 bar). Secondary pressure 90 PSIG (6.2 bar).


**“F” Series Filters, Type “A” 5 micron elements:** All Wilkerson Type “A” 5 micron elements **meet or exceed ISO Class 3** for maximum particle size and concentration of solid contaminants.

## Materials of Construction

Body	Zinc	
Bonnet / Knob	Nylon / Acetal	
Bowls	Plastic Bowl	Polycarbonate
	Metal Bowl	Aluminum
Diaphragm Assembly	Nitrile / Zinc	
Filter Element	Polyethylene	
Seals	Plastic Bowl	Nitrile
	Metal Bowl	Nitrile
Sight Dome	Polycarbonate	
Sight Gauge	Metal Bowl	Polyamide (Nylon)
Springs	Main Regulating Valve	Steel
		Stainless Steel
Suggested Lubricant	Airline Oil F442001	
Valve	Brass / Nitrile	



**Note:** For Kits and Repair Parts, see individual pages for Filters, Regulators, and Lubricators.



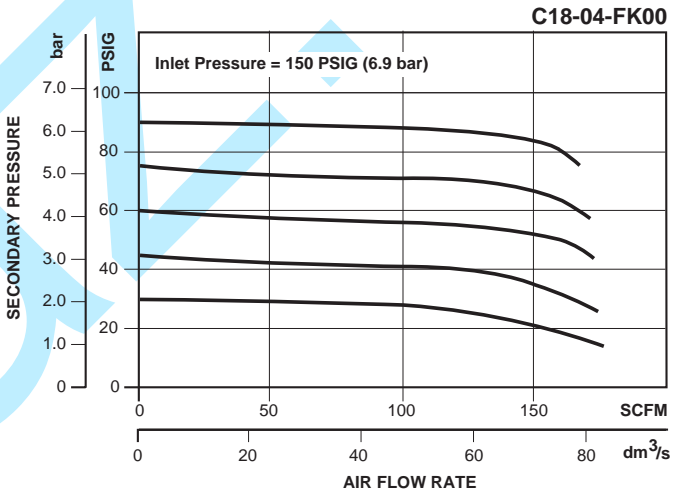
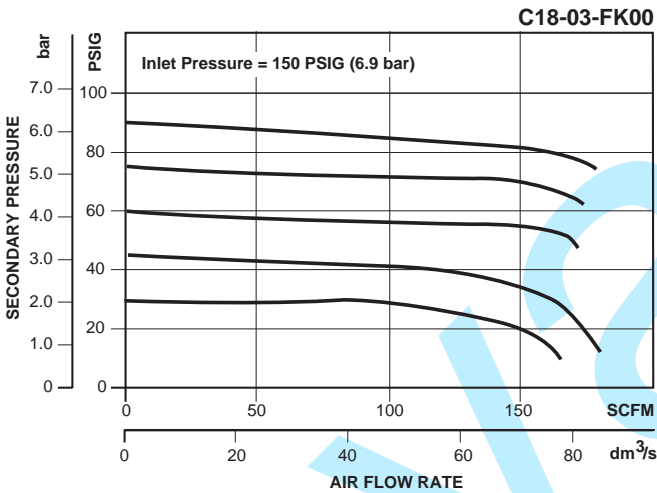
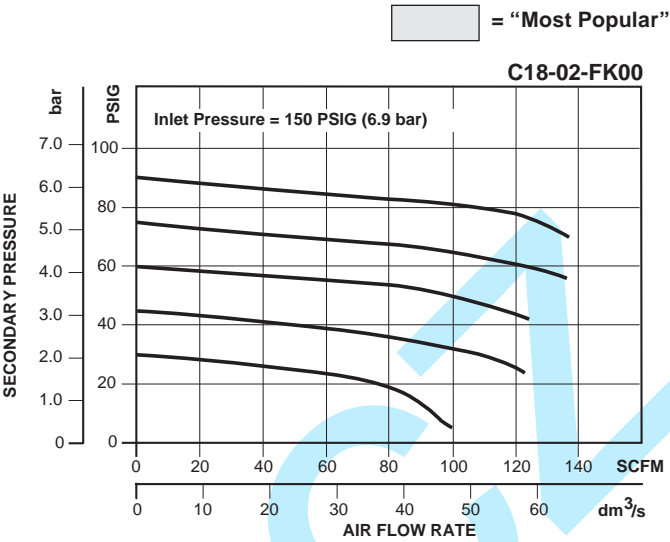
**WARNING**

Product rupture can cause serious injury.  
Do not connect regulator to bottled gas.  
Do not exceed maximum primary pressure rating.

**CAUTION:**

**REGULATOR PRESSURE ADJUSTMENT** – The working range of knob adjustment is designed to permit outlet pressures within their full range. Pressure adjustment beyond this range is also possible because the knob is not a limiting device. This is a common characteristic of most industrial regulators, and limiting devices may be obtained only by special design.

For best performance, regulated pressure should always be set by increasing the pressure up to the desired setting.



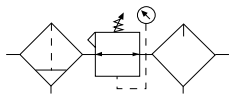
Ordering Information

Model Type	Port Size	Plastic Bowl / Bowl Guard / With Gauge 0 to 125 PSI (0 to 8.6 bar)	Plastic Bowl / Bowl Guard / Without Gauge 0 to 125 PSI (0 to 8.6 bar)	Metal Bowl / Sight Gauge / With Gauge 0 to 125 PSI (0 to 8.6 bar)	Metal Bowl / Sight Gauge / Without Gauge 0 to 125 PSI (0 to 8.6 bar)	Plastic Bowl / Bowl Guard / With Gauge With End Blocks 0 to 125 PSI (0 to 8.6 bar)
Manual Drain	1/4	C18-02-FKG0	C18-02-FK00	C18-02-FLG0	C18-02-FL00	C18-02-FKBG
	3/8	C18-03-FKG0	C18-03-FK00	C18-03-FLG0	C18-03-FL00	C18-03-FKBG
	1/2	C18-04-FKG0	C18-04-FK00	C18-04-FLG0	C18-04-FL00	C18-04-FKBG
Automatic Drain	1/4	C18-02-FGG0	C18-02-FG00	C18-02-FHG0	C18-02-FH00	C18-02-FGBG
	3/8	C18-03-FGG0	C18-03-FG00	C18-03-FHG0	C18-03-FH00	C18-03-FGBG
	1/2	C18-04-FGG0	C18-04-FG00	C18-04-FHG0	C18-04-FH00	C18-04-FGBG

**Options** - To order an option supplied with the unit model, add the appropriate coded suffix letter in the designated position of the model number.



# Combination C16 / C17



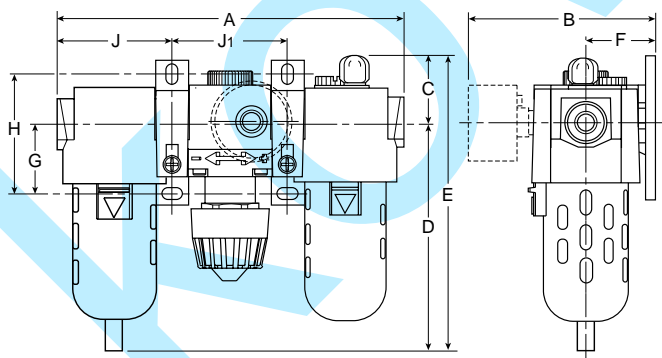
B



C16-02-000

## Features

- Components Integrated into Single Unit
- Metal Bowl with Sight Gauge Option
- Pressure Gauge Standard
- Integral Plastic Bowl / Bowl Guard
- Quick Disconnect Bowl
- Standard Self-relieving



## Dimensions

Model	Inches (mm)	A	B	C	D	E	F	G	H	J	J <sub>1</sub>
Standard Unit with End Blocks C16-XX-000 and C17-XX-000		11.30 (287)	4.30 (109)	1.62 (41)	5.50 (139.7)	7.12 (180.8)	1.30 (33)	1.74 (44)	2.98 (75.7)	5.65 (143.5)	2.91 (73.9)

 = "Most Popular"

## Specifications

Flow Capacity*	1/4	36.1 SCFM (17.0 dm <sup>3</sup> /s)
	3/8	58.5 SCFM (27.6 dm <sup>3</sup> /s)
	1/2	64.0 SCFM (30.2 dm <sup>3</sup> /s)

Gauge Ports (2)	NPT / BSPP-G	1/4
-----------------	--------------	-----

Port Threads	NPT	1/4, 3/8, 1/4
--------------	-----	---------------

### Pressure & Temperature Ratings –

Plastic Bowl	0 to 150 PSIG (0 to 10.3 bar)
	32°F to 125°F (0°C to 52°C)
Metal Bowl	0 to 200 PSIG (0 to 13.8 bar)
	32°F to 175°F (0°C to 80°C)

Standard Filtration	5 Micron
---------------------	----------

Weight	7.3 lb. (3.3 kg)
--------	------------------

\* Inlet pressure 150 PSIG (10.3 bar). Pressure drop 5 PSID (0.3 bar).

**"F" Series Filters, Type "A" 5 micron elements:** All Wilkerson Type "A" 5 micron elements **meet or exceed ISO Class 3** for maximum particle size and concentration of solid contaminants.

## Materials of Construction

Body	Zinc
Bonnet, Knob	PBT
Bowls –	
Plastic Bowl	Polycarbonate
Metal Bowl	Zinc
Diaphragm	Nitrile / Zinc
Filter Element	Polypropylene
Seals –	
Plastic Bowl	Nitrile
Metal Bowl	Fluorocarbon
Sight Dome	Nylon
Springs	Steel
Suggested Lubricant	Airline Oil F442001
Valve Assembly	Brass / Nitrile / Acetal



 = "Most Popular"

**Note:** For Kits and Repair Parts, see individual pages for Filters, Regulators, and Lubricators.

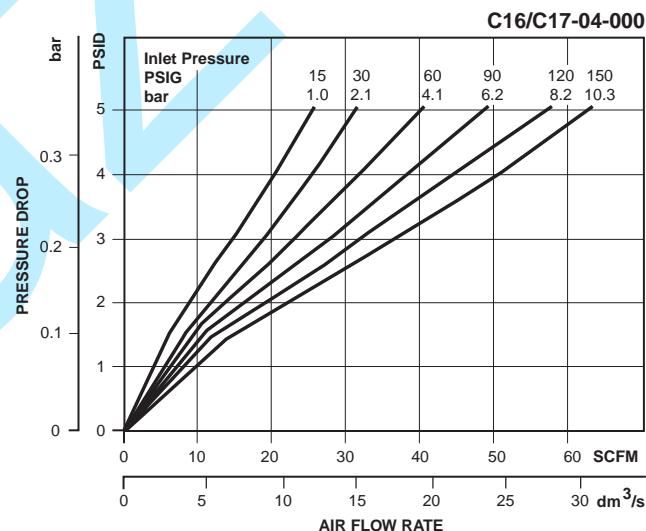
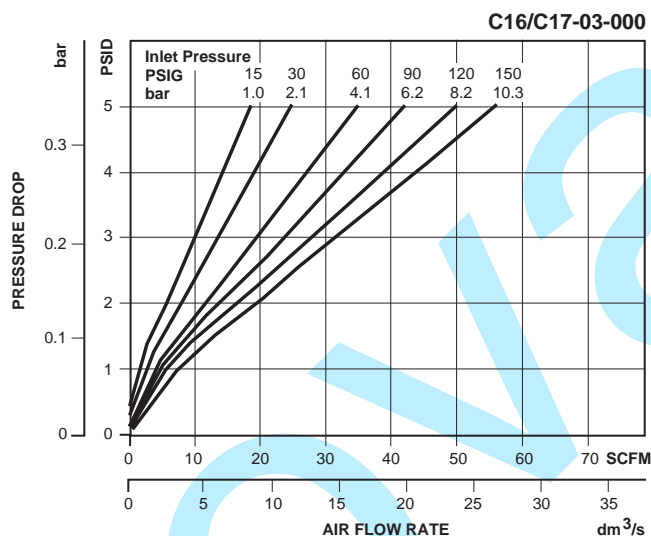
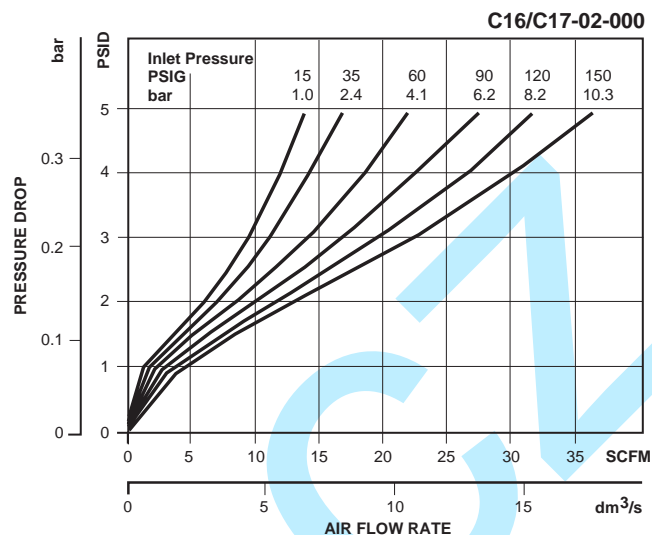
### ⚠ WARNING

Product rupture can cause serious injury.  
Do not connect regulator to bottled gas.  
Do not exceed maximum primary pressure rating.

### CAUTION:

**REGULATOR PRESSURE ADJUSTMENT** – The working range of knob adjustment is designed to permit outlet pressures within their full range. Pressure adjustment beyond this range is also possible because the knob is not a limiting device. This is a common characteristic of most industrial regulators, and limiting devices may be obtained only by special design.

For best performance, regulated pressure should always be set by increasing the pressure up to the desired setting.



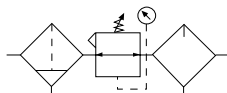
### Ordering Information

Model Type	Port Size	Plastic Bowl / Bowl Guard with End Blocks 0 to 125 PSIG (0 to 8.5 bar)	Metal Bowl / Sight Gauge 0 to 125 PSIG (0 to 8.5 bar)	Automatic Drain 0 to 125 PSIG (0 to 8.5 bar)
<b>C16</b>	1/4	C16-02-000	C16-02-G00	C16-02-F00
	3/8	C16-03-000	C16-03-G00	C16-03-F00
	1/2	C16-04-000	C16-04-G00	C16-04-F00
<b>C17</b>	1/4	C17-02-000	C17-02-G00	C17-02-F00
	3/8	C17-03-000	C17-03-G00	C17-03-F00
	1/2	C17-04-000	C17-04-G00	C17-04-F00

Options - To order an option supplied with the unit model, add the appropriate coded suffix letter in the designated position of the model number.



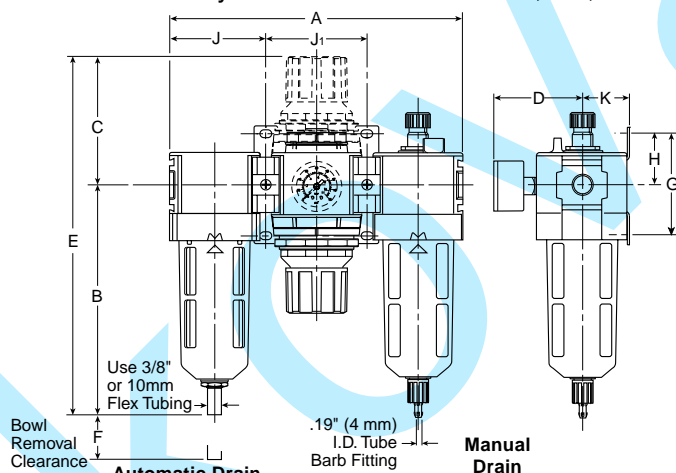
# Combination C28



**C28-04-FKG0**

## Features

- Components Integrated into Single Unit
- Modern Design and Appearance
- Light Weight, Ready-to-Mount Assembly Comes Standard with Pressure Gauge and Modular T-Bracket / Joiner Assembly
- High Flow Capacity
- Quick-Disconnect Bowl / Bowl Guard
- Joiner Assembly / Connector Patent No. 5,383,689



## Dimensions

Models	Inches (mm)	A	B	C	D	E	F	G	H	J	J <sub>1</sub>	K
Standard Unit with Gauge C28-XX-FKG0		9.32 (237)	7.40 (188)	4.16 (105)	2.83 (72)	11.56 (294)	2.00 (51)	3.25 (83)	1.63 (41)	3.05 (77)	3.22 (81)	1.53 (39)
Standard Unit with Automatic Drain and Gauge C28-XX-FGG0		9.32 (237)	7.00 (178)	4.16 (105)	2.83 (72)	11.16 (283)	2.00 (51)	3.25 (83)	1.63 (41)	3.05 (77)	3.22 (81)	1.53 (39)
With End Blocks		12.00 (305)	—	—	—	—	—	—	—	4.39 (112)	—	—

## Specifications

Flow Capacity*	3/8	150 SCFM (70.8 dm <sup>3</sup> /s)
	1/2	175 SCFM (82.6 dm <sup>3</sup> /s)
	3/4	175 SCFM (82.6 dm <sup>3</sup> /s)

Gauge Port (2 ea.)	NPT / BSPP-G	1/4
Maximum Supply Pressure	Plastic Bowl	150 PSIG (10.3 bar)
	Metal Bowl	250 PSIG (17.2 bar)
Operating Temperature	Plastic Bowl	32° to 125°F (0° to 52°C)
	Metal Bowl	32° to 150°F (0° to 65.5°C)
Port Size	NPT / BSPP-G	3/8, 1/2, 3/4
Standard Filtration	Micron	5
Weight	lb. (kg)	5.90 (2.6)

\* Inlet pressure 150 PSIG (10.3 bar). Secondary pressure 90 PSIG (6.2 bar).


**“F” Series Filters, Type “A” 5 micron elements:** All Wilkerson Type “A” 5 micron elements **meet or exceed** ISO Class 3 for maximum particle size and concentration of solid contaminants.

## Materials of Construction

Body	Zinc	
Bonnet / Knob	Nylon / Acetal	
Bowls	Plastic Bowl	Polycarbonate
	Metal Bowl	Aluminum
Diaphragm Assembly	Nitrile / Zinc	
Filter Element	Polyethylene	
Seals	Plastic Bowl	Nitrile
	Metal Bowl	Nitrile
Sight Dome	Polycarbonate	
Sight Gauge	Metal Bowl	Polyamide (Nylon)
Springs	Main Regulating Valve	Steel
		Stainless Steel
Suggested Lubricant	Airline Oil F442001	
Valve	Brass / Nitrile / Acetal	



**Note:** For Kits and Repair Parts, see individual pages for Filters, Regulators, and Lubricators.



**WARNING**

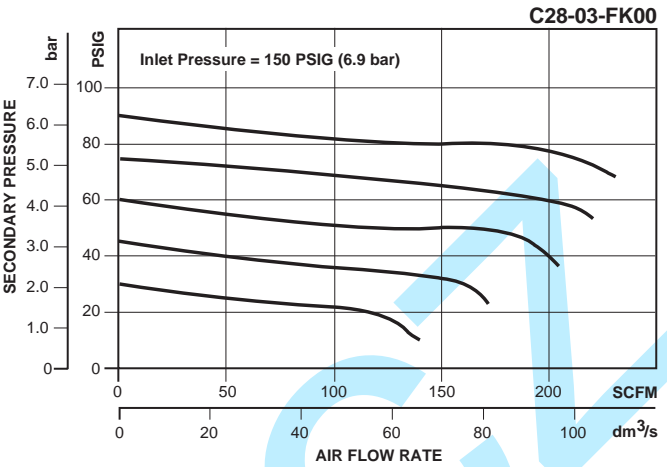
Product rupture can cause serious injury.  
Do not connect regulator to bottled gas.  
Do not exceed maximum primary pressure rating.

**CAUTION:**

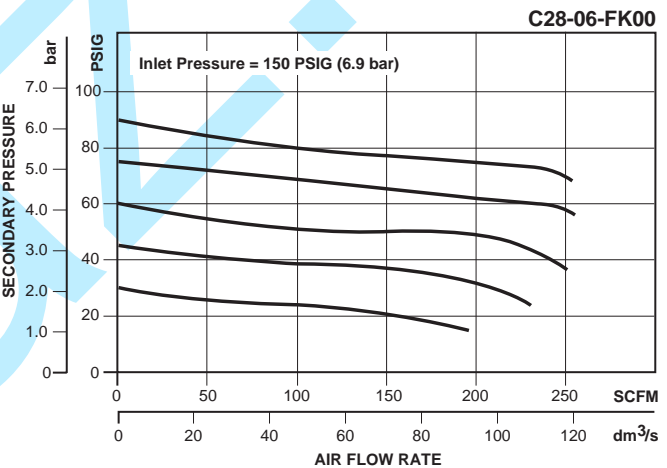
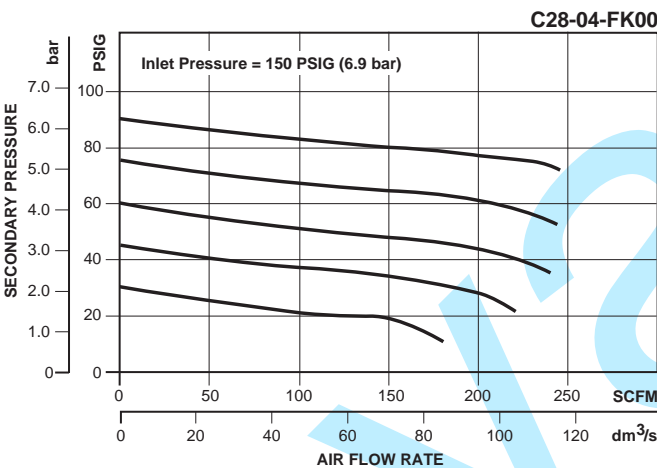
**REGULATOR PRESSURE ADJUSTMENT** – The working range of knob adjustment is designed to permit outlet pressures within their full range. Pressure adjustment beyond this range is also possible because the knob is not a limiting device. This is a common characteristic of most industrial regulators, and limiting devices may be obtained only by special design.

For best performance, regulated pressure should always be set by increasing the pressure up to the desired setting.

 = “Most Popular”



**B**



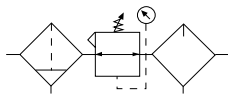
**Ordering Information**

Model Type	Port Size	Plastic Bowl / Bowl Guard / With Gauge 0 to 125 PSI (0 to 8.6 bar)	Plastic Bowl / Bowl Guard / Without Gauge 0 to 125 PSI (0 to 8.6 bar)	Metal Bowl / Sight Gauge / With Gauge 0 to 125 PSI (0 to 8.6 bar)	Metal Bowl / Sight Gauge / Without Gauge 0 to 125 PSI (0 to 8.6 bar)	Plastic Bowl / Bowl Guard / With Gauge With End Blocks 0 to 125 PSI (0 to 8.6 bar)
Manual Drain	3/8	C28-03-FKG0	C28-03-FK00	C28-03-FLG0	C28-03-FL00	C28-03-FKBG
	1/2	C28-04-FKG0	C28-04-FK00	C28-04-FLG0	C28-04-FL00	C28-04-FKBG
	3/4	C28-06-FKG0	C28-06-FK00	C28-06-FLG0	C28-06-FL00	C28-06-FKBG
Automatic Drain	3/8	C28-03-FGG0	C28-03-FG00	C28-03-FHG0	C28-03-FH00	C28-03-FGBG
	1/2	C28-04-FGG0	C28-04-FG00	C28-04-FHG0	C28-04-FH00	C28-04-FGBG
	3/4	C28-06-FGG0	C28-06-FG00	C28-06-FHG0	C28-06-FH00	C28-06-FGBG

**Options** - To order an option supplied with the unit model, add the appropriate coded suffix letter in the designated position of the model number.



# Combination C26 / C27



C26-02-000

## Features

- Components Integrated into Single Unit
- Metal Bowl with Sight Gauge Option
- Pressure Gauge Standard
- Integral Plastic Bowl / Bowl Guard
- Quick Disconnect Bowl
- Standard Self-relieving

## Specifications

Flow Capacity*	1/4	35.0 SCFM (16.5 dm <sup>3</sup> /s)
	3/8	60.0 SCFM (28.3 dm <sup>3</sup> /s)
	1/2	128 SCFM (60.4 dm <sup>3</sup> /s)

Gauge Ports (2)	NPT / BSPP-G	1/4
-----------------	--------------	-----

Port Threads	NPT	1/4, 3/8, 1/2
--------------	-----	---------------

### Pressure & Temperature Ratings –

Plastic Bowl	0 to 150 PSIG (0 to 10.3 bar)
	32°F to 125°F (0°C to 52°C)
Metal Bowl	0 to 200 PSIG (0 to 13.8 bar)
	32°F to 175°F (0°C to 80°C)

Standard Filtration	5 Micron
---------------------	----------

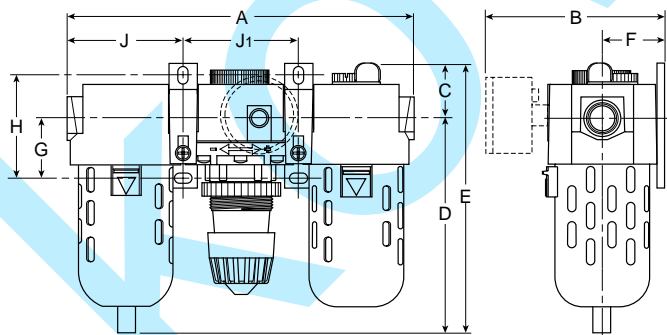
Weight	10.5 lb. (4.7 kg)
--------	-------------------

\* Inlet pressure 150 PSIG (10.3 bar). Pressure drop 5 PSID (0.3 bar).

**“F” Series Filters, Type “A” 5 micron elements:** All Wilkerson Type “A” 5 micron elements **meet or exceed ISO** Class 3 for maximum particle size and concentration of solid contaminants.

## Materials of Construction

Body	Zinc
Bonnet, Knob	PBT
Bowls – Plastic Bowl	Polycarbonate
Metal Bowl	Zinc
Diaphragm	Nitrile / Zinc
Filter Element	Polypropylene
Seals – Plastic Bowl	Nitrile
Metal Bowl	Fluorocarbon
Sight Dome	Nylon
Springs	Steel
Suggested Lubricant	Airline Oil F442001
Valve Assembly	Brass / Nitrile / Acetal



## Dimensions

Model	Inches (mm)	A	B	C	D	E	F	G	H	J	J <sub>1</sub>
Standard Unit with End Blocks C26-XX-000 and C27-XX-000		12.35 (314)	4.80 (122)	1.60 (41)	6.40 (162.6)	8.00 (203)	1.50 (38)	1.74 (44)	2.98 (75.7)	6.17 (157)	3.35 (85.1)



 = "Most Popular"

**Note:** For Kits and Repair Parts, see individual pages for Filters, Regulators, and Lubricators.

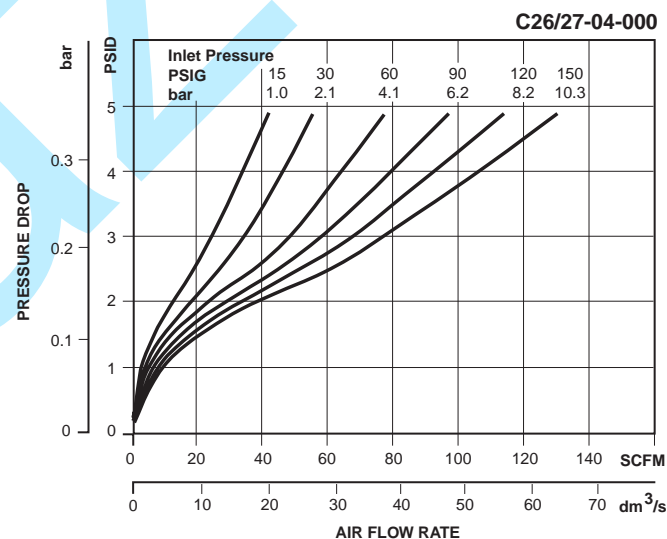
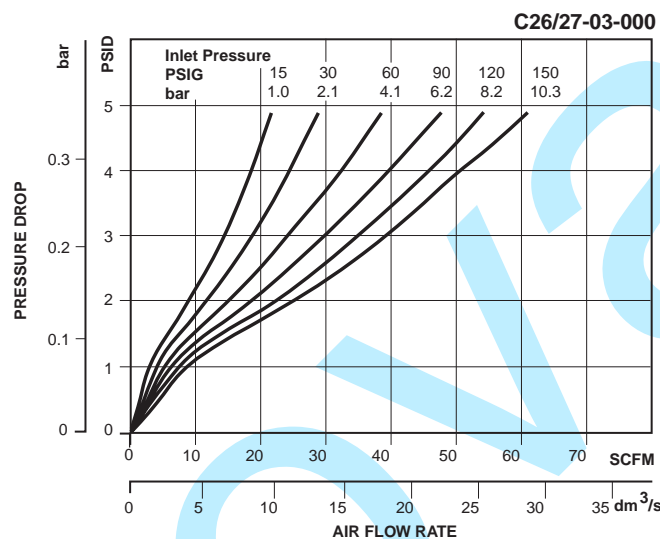
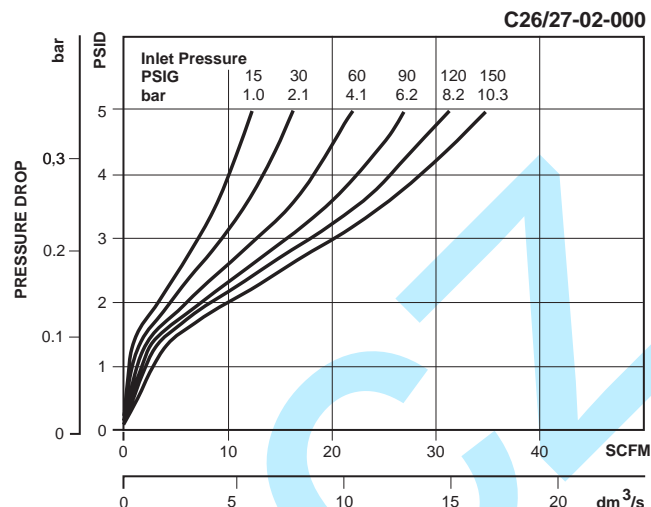
### **WARNING**

Product rupture can cause serious injury.  
Do not connect regulator to bottled gas.  
Do not exceed maximum primary pressure rating.

### CAUTION:

**REGULATOR PRESSURE ADJUSTMENT** – The working range of knob adjustment is designed to permit outlet pressures within their full range. Pressure adjustment beyond this range is also possible because the knob is not a limiting device. This is a common characteristic of most industrial regulators, and limiting devices may be obtained only by special design.

For best performance, regulated pressure should always be set by increasing the pressure up to the desired setting.



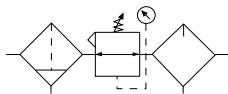
### Ordering Information

Model Type	Port Size	Plastic Bowl / Bowl Guard with End Blocks 0 to 125 PSIG (0 to 8.5 bar)	Metal Bowl / Sight Gauge 0 to 125 PSIG (0 to 8.5 bar)	Automatic Drain 0 to 125 PSIG (0 to 8.5 bar)
<b>C26</b>	1/4	C26-02-000	C26-02-G00	C26-02-F00
	3/8	C26-03-000	C26-03-G00	C26-03-F00
	1/2	C26-04-000	C26-04-G00	C26-04-F00
<b>C27</b>	1/4	C27-02-000	C27-02-G00	C27-02-F00
	3/8	C27-03-000	C27-03-G00	C27-03-F00
	1/2	C27-04-000	C27-04-G00	C27-04-F00

Options - To order an option supplied with the unit model, add the appropriate coded suffix letter in the designated position of the model number.



# Combination C31

 = "Most Popular"


C31-06-000

## Features

- 5 Micron Filtration
- High Flow Capacity
- Large Bowl Reservoir
- Pressure Gauge
- Standard Self-relieving

## Specifications

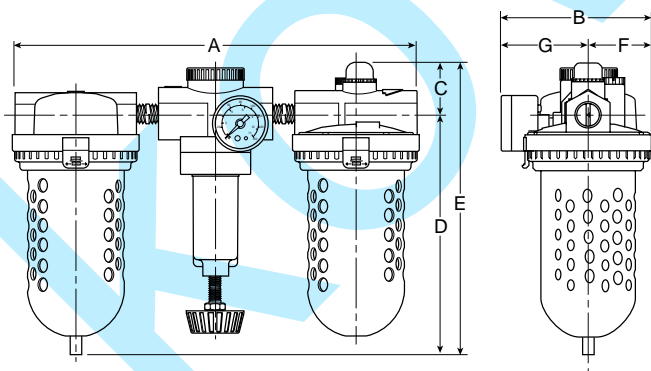
Flow Capacity*	3/4, 1	374 SCFM (176.5 dm <sup>3</sup> /s)
Gauge Ports (2)	NPT	1/4
Port Threads	NPT	3/4, 1
Pressure & Temperature Ratings –		
Plastic Bowl	0 to 150 PSIG (0 to 10.3 bar) 32°F to 125°F (0°C to 52°C)	
Metal Bowl	0 to 200 PSIG (0 to 13.8 bar) 32°F to 175°F (0°C to 80°C)	
Standard Filtration	5 Micron	
Weight	18.2 lb. (8.2 kg)	

\* Inlet pressure 120 PSIG (8.3 bar). Pressure drop 5 PSID (0.3 bar).

**"F" Series Filters, Type "A" 5 micron elements:** All Wilkerson Type "A" 5 micron elements **meet or exceed ISO Class 3** for maximum particle size and concentration of solid contaminants.

## Materials of Construction

Body	Zinc
Bonnet, Piston	Zinc
Bowls –	
Plastic Bowl	Polycarbonate
Metal Bowl	Zinc
Filter Element	Polypropylene
Seals –	
Plastic Bowl	Nitrile
Metal Bowl	Fluorocarbon
Sight Dome	Nylon
Springs	Steel
Suggested Lubricant	Airline Oil F442001
Valve Assembly	Brass / Nitrile / Acetal




## Dimensions

Model	Inches (mm)	A	B	C	D	E	F	G
Standard Unit C31-XX-000		15.30 (389)	5.70 (145)	1.98 (50)	8.96 (228)	10.94 (278)	2.40 (60.9)	3.30 (83.8)



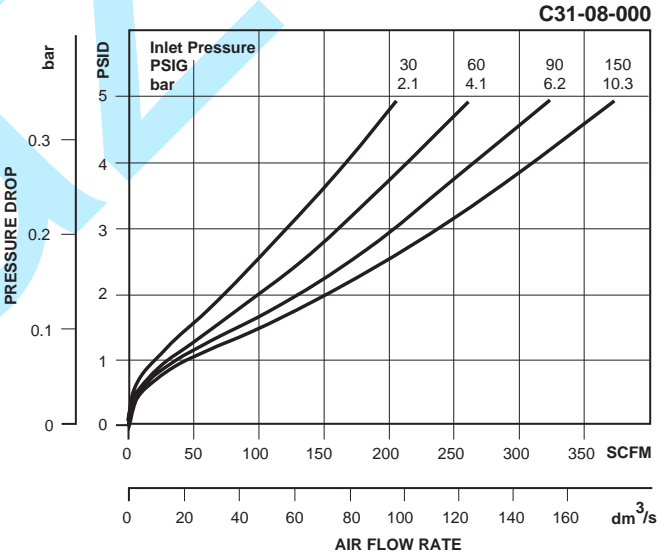
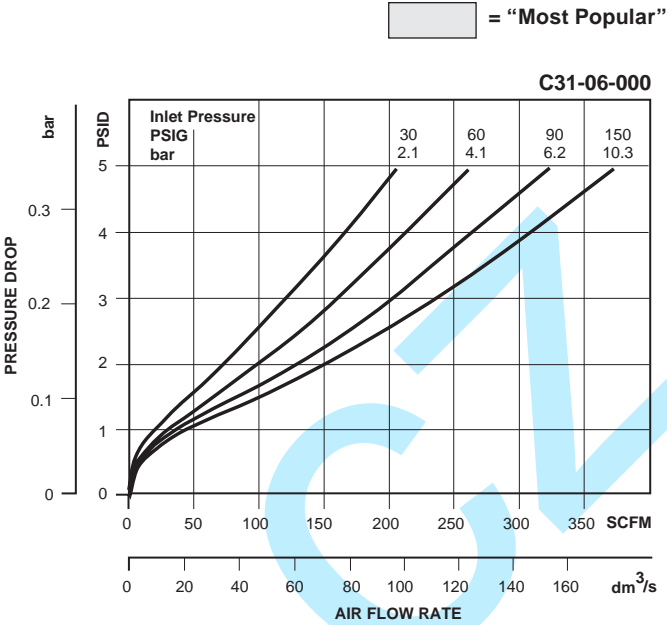
**Note:** For Kits and Repair Parts, see individual pages for Filters, Regulators, and Lubricators.



**WARNING**

Product rupture can cause serious injury.  
Do not connect regulator to bottled gas.  
Do not exceed maximum primary pressure rating.

**CAUTION:**  
**REGULATOR PRESSURE ADJUSTMENT** – The working range of knob adjustment is designed to permit outlet pressures within their full range. Pressure adjustment beyond this range is also possible because the knob is not a limiting device. This is a common characteristic of most industrial regulators, and limiting devices may be obtained only by special design.  
For best performance, regulated pressure should always be set by increasing the pressure up to the desired setting.



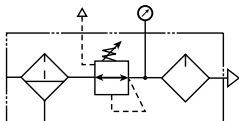
Ordering Information

Model Type	Port Size	Plastic Bowl / Bowl Guard 0 to 125 PSIG (0 to 8.5 bar)
C31	3/4	C31-06-000
	1	C31-08-000

Options - To order an option supplied with the unit model, add the appropriate coded suffix letter in the designated position of the model number.



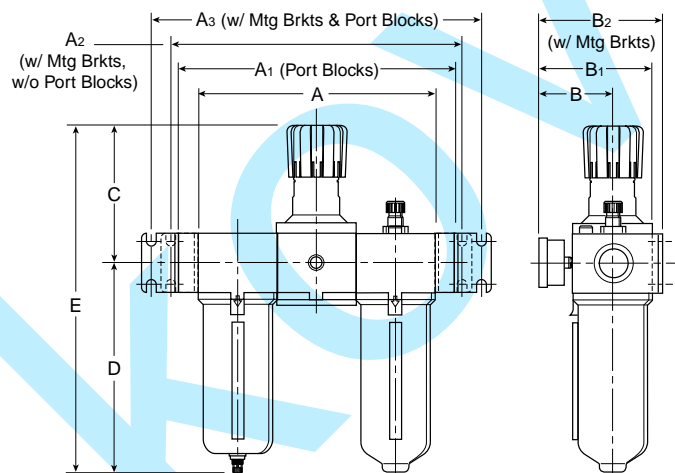
# Combination C39



**C39-08-FLG0**


## Features

- See Individual Component Pages for Details
- Port Blocks, Manifold Block, Ball Valve and Wall Bracket Must Be Ordered Separately



## Dimensions

Model	Inches (mm)	A	A <sub>1</sub>	A <sub>2</sub>	A <sub>3</sub>	B	B <sub>1</sub>	B <sub>2</sub>	C	D	E
Standard Unit C39-XX-XXXX		10.87 (276)	13.15 (334)	13.46 (342)	15.75 (400)	3.62 (92)	5.20 (132)	5.74 (146)	6.38 (162)	9.57 (243)	15.95 (405)

 = "Most Popular"

## Specifications

Flow Capacity*	1	250 SCFM (118 dm <sup>3</sup> /s)
Adjusting Range Pressure	0 to 125 PSIG (0 to 8.6 bar)	
Gauge Port		1/4
Maximum Supply Pressure		250 PSIG (17.2 bar)
Operating Temperature		32° to 175°F (0° to 80°C)
Port Size**	NPT	1
Standard Filtration***	Micron	5
Weight	lb. (kg)	5.3 (2.4)

\* Inlet pressure 100 PSIG (6.9 bar). Secondary pressure 90 PSIG (6.2 bar).

\*\* Port blocks available for BSPP thread & 1-1/2" port.

"F" Series Filters, Type "A" 5 micron elements: All Wilkerson Type "A" 5 micron elements meet or exceed ISO Class 3 for maximum particle size and concentration of solid contaminants.


## Materials of Construction

Body & Bowl	Aluminum
Element Retainer, Deflector and Baffle	Plastic
Filter Element	Sintered Polyethylene
Piston	Plastic
Seals	Nitrile
Sight Dome	Polycarbonate
Sight Gauge	Polyamide (Nylon)
Springs	Steel
Suggested Lubricant	Airline Oil F442001
Valve Assembly	Brass / Nitrile



= "Most Popular"

**Note:** For Kits and Repair Parts, see individual pages for Filters, Regulators, and Lubricators.

 **WARNING**

Product rupture can cause serious injury.  
Do not connect regulator to bottled gas.  
Do not exceed maximum primary pressure rating.

**CAUTION:**

**REGULATOR PRESSURE ADJUSTMENT** – The working range of knob adjustment is designed to permit outlet pressures within their full range. Pressure adjustment beyond this range is also possible because the knob is not a limiting device. This is a common characteristic of most industrial regulators, and limiting devices may be obtained only by special design.

For best performance, regulated pressure should always be set by increasing the pressure up to the desired setting.

**Ordering Information**

Model Type	Port Size	Metal Bowl, with Gauge 7 to 125 PSIG (0.4 to 8.6 bar)
Manual Drain	1	C39-08-FLG0
Automatic Drain	1	C39-08-FHG0

Options - To order an option supplied with the unit model, add the appropriate coded suffix letter in the designated position of the model number.