

## Flexo Coupling - PM5

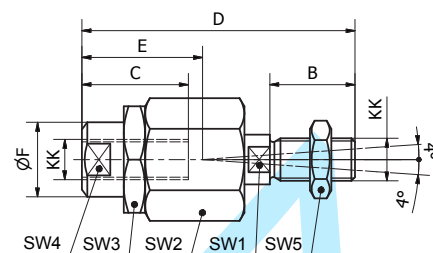


Flexo coupling for articulated mounting of piston rod. Flexo fitting is intended to take up axial angle errors within a range of  $\pm 4^\circ$ .

### Materials:

Flexo coupling, nut: Zinc-plated steel

Supplied complete with galvanized adjustment nut.



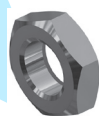
| Cyl. bore | KK       | B    | C    | D    | E    | ØF   | SW1  | SW2  | SW3  | SW4  | SW5  | Weight | Order code      |
|-----------|----------|------|------|------|------|------|------|------|------|------|------|--------|-----------------|
| [mm]      |          | [mm] | [mm] | [mm] | [mm] | [mm] | [mm] | [mm] | [mm] | [mm] | [mm] | [kg]   |                 |
| Ø32       | M10x1.25 | 20   | 23   | 70   | 31   | 21   | 12   | 30   | 30   | 19   | 17   | 0.23   | <b>P1C-4KRF</b> |
| Ø40       | M12x1.25 | 24   | 30   | 77   | 31   | 21   | 12   | 30   | 30   | 19   | 19   | 0.23   | <b>P1C-4LRF</b> |
| Ø50       | M16x1.5  | 32   | 32   | 108  | 45   | 33.5 | 19   | 41   | 41   | 30   | 24   | 0.65   | <b>P1C-4MRF</b> |
| Ø63       | M16x1.5  | 32   | 32   | 108  | 45   | 33.5 | 19   | 41   | 41   | 30   | 24   | 0.65   | <b>P1C-4MRF</b> |
| Ø80       | M20x1.5  | 40   | 42   | 122  | 56   | 33.5 | 19   | 41   | 41   | 30   | 30   | 0.71   | <b>P1C-4PRF</b> |
| Ø100      | M20x1.5  | 40   | 42   | 122  | 56   | 33.5 | 19   | 41   | 41   | 30   | 30   | 0.71   | <b>P1C-4PRF</b> |
| Ø125      | M27x2    | 54   | 48   | 147  | 51   | 39   | 24   | 55   | 55   | 32   | 41   | 1.60   | <b>P1C-4RRF</b> |

## Piston Rod Nuts - MR9

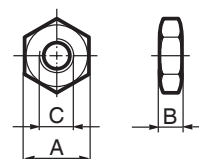
P1F cylinders are delivered with a zinc plated steel piston rod nut, in stainless steel for options V & D only



**Material:** Zinc-plated steel



**Material:** Stainless steel A2



### According to DIN 439 B

| Cyl.-bore | A    | B    | C          | Weight | Order code        |                  |
|-----------|------|------|------------|--------|-------------------|------------------|
| [mm]      | [mm] | [mm] | [mm]       | [kg]   | Zinc plated steel | Stainless steel  |
| Ø32       | 17   | 5.0  | M10 x 1.25 | 0.007  | <b>P14-4KRPZ</b>  | <b>P14-4KRPS</b> |
| Ø40       | 19   | 6.0  | M12 x 1.25 | 0.010  | <b>P14-4LRPZ</b>  | <b>P14-4LRPS</b> |
| Ø50       | 24   | 8.0  | M16 x 1.5  | 0.021  | <b>P14-4MRPZ</b>  | <b>P14-4MRPS</b> |
| Ø63       | 24   | 8.0  | M16 x 1.5  | 0.021  | <b>P14-4MRPZ</b>  | <b>P14-4MRPS</b> |
| Ø80       | 30   | 10.0 | M20 x 1.5  | 0.040  | <b>P14-4PRPZ</b>  | <b>P14-4PRPS</b> |
| Ø100      | 30   | 10.0 | M20 x 1.5  | 0.040  | <b>P14-4PRPZ</b>  | <b>P14-4PRPS</b> |
| Ø125      | 41   | 13.5 | M27 x 2.0  | 0.100  | <b>P14-4RRPZ</b>  | <b>P14-4RRPS</b> |

\*Weight per item