

Tube clamps series C (Heavy series) – Components

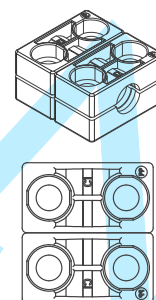
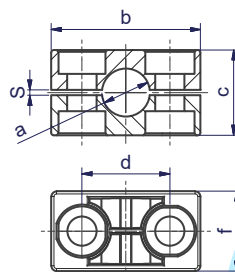
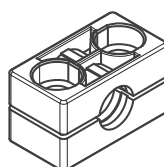
DIN 3015, part 2

Order codes for clamp halves:

Material	Interior surface	Order code
Polypropylene	grooved	RCP
	smooth	RCPG ¹⁾
Polyamide	grooved	RCN
	smooth	RCNG ¹⁾
Rubber	grooved	RCVR ¹⁾²⁾
	smooth	RCVG ¹⁾²⁾
Aluminium	grooved	RCA

(Please exchange as required standard abbreviation RCP in column for "clamp halves")

For flame- or corrosion retardant materials, please refer to page T5.



Please order 2x the single clamp (e.g. 2x RCP...)

clamp size	Tube O.D. mm a	Tube NB	Tube O.D.	RCP... Order code	1 part 2 clamp halves dimensions:					dimensions: f
					b	c	d	s	f	
1	6.0	G 1/8	5/16	RCP106X	56	32	33	2	30	60
	8.0			RCP108X						
	9.5			RCP109.5X						
	10.0			RCP110X						
	12.0			RCP112X						
	12.7	G 1/4	1/2	RCP112.7X						
	13.5			RCP113.5X						
	14.0			RCP114X						
	15.0	G 3/8	5/8	RCP115X						
	16.0			RCP116X						
	17.2			RCP117.2X						
	18.0			RCP118X						
2	19.0	G 1/2	3/4	RCP219X	71	48	45	2	30	60
	20.0			RCP220X						
	21.3			RCP221.3X						
	22.0			RCP222X						
	23.0			RCP223X						
	25.0	G 3/4	1	RCP225X						
	25.4			RCP225.4X						
	26.9			RCP226.9X						
	28.0			RCP228X						
	30.0			RCP230X						
3	30.0	G 1	1 1/4	RCP330X	86	60	60	2	30	60
	32.0			RCP332X						
	33.7			RCP333.7X						
	35.0	G 1 1/4	1 1/2	RCP335X						
	38.0			RCP338X						
	40.0			RCP340X						
4	42.0	G 1 1/4	1 1/2	RCP342X	117	90	90	3	45	90
	38.0			RCP438X						
	40.0	G 1 1/4	2	RCP440X						
	42.0			RCP442X						
	45.0			RCP445X						
	48.3	G 1 1/2	2 1/4	RCP448.3X						
	50.0			RCP450X						
	51.0			RCP451X						
	52.0	G 2	2 1/2	RCP452X						
	55.0			RCP455X						
	57.0			RCP457X						
	60.3			RCP460.3X						
	63.0			RCP463X						
	65.0			RCP465X						
	70.0		2 3/4	RCP470X						

Continuation see next page ...

Tube clamps series C (Heavy series) – Components (Continued)

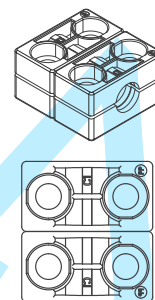
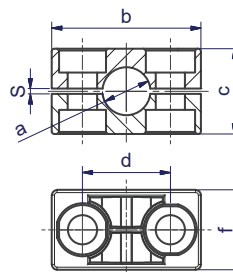
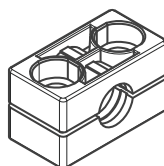
DIN 3015, part 2

Order codes for clamp halves:

Material	Interior surface	Order code
Polypropylene	grooved	RCP
	smooth	RCPG ¹⁾
Polyamide	grooved	RCN
	smooth	RCNG ¹⁾
Rubber	grooved	RCVR ¹⁾²⁾
	smooth	RCVG ¹⁾²⁾
Aluminium	grooved	RCA

(Please exchange as required standard abbreviation RCP in column for "clamp halves")

For flame- or corrosion retardant materials, please refer to page T5.



Please order 2x the single clamp (e.g. 2x RCP...)

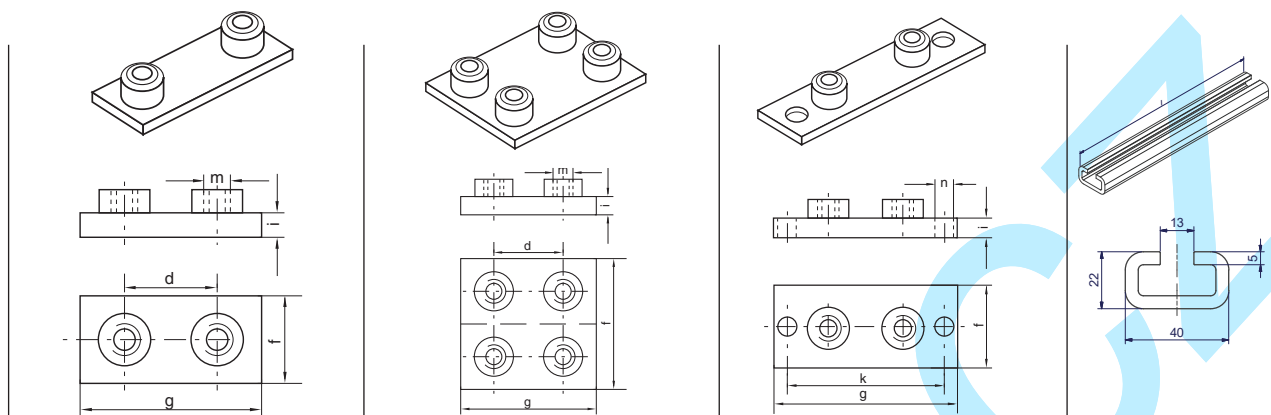
clamp size	Tube O.D. mm a	Tube NB	Tube O.D.	RCP... Order code	1 part 2 clamp halves dimensions:					dimensions: f
					b	c	d	s	f	
5	65.0	G 2 1/2	2 3/4	RCP565X	154	120	122	5	60	120
	70.0			RCP570X						
	73.0			RCP573X						
	75.0			RCP575X						
	76.1		3	RCP576.1X						
	80.0	G 3	3 1/4	RCP580X						
	82.5			RCP582.5X						
	85.0			RCP585X						
	88.0			RCP588X						
	88.9		3 1/2	RCP588.9X						
6	90.0	G 3 1/2		RCP590X	206	168	168	6	80	160
	97.0			RCP690X						
	100.0		4	RCP697X						
	101.6			RCP6100X						
	108.0	G 4	4 1/4	RCP6101.6X						
	114.3		4 1/2	RCP6108X						
	115.0			RCP6114.3X						
	120.0			RCP6115X						
	127.0		5	RCP6120X						
				RCP6127X						
7	127.0	G 5	5	RCP7127X	251	200	205	6	90	180
	130.0			RCP7130X						
	133.0		5 1/4	RCP7133X						
	140.0		5 1/2	RCP7140X						
	150.0	G 5 1/2	6	RCP7150X						
	152.4			RCP7152.4X						
	159.0		6 1/4	RCP7159X						
	165.1		6 1/2	RCP7165.1X						
	168.3		6 5/8	RCP7168.3X						
		G 6	6 5/8	RCP8168.3X						
8	177.8	G 6	7	RCP8177.8X	320	270	265	6	120	240
	190.0			RCP8190X						
	193.7		7 5/8	RCP8193.7X						
	203.0		8	RCP8203X						
	219.1	G 8	8 5/8	RCP8219.1X						
	220.0			RCP8220X						
			8 5/8	RCP9219.1X						
	244.5			RCP9244.5X						
	273.0	G 10	10 3/4	RCP9273X						
	323.9		12 3/4	RCP9323.9X						
9		G 12			470	410	395	20	162	324
10	355.6	G 14		RCP10355.6X	630	530	534	20	182	364
	406.4			RCP10406.4X						

¹⁾ Only sizes 1–8

²⁾ When assembling solid rubber clamps, covering plates, hexagon screws and locking washers must be used.

Tube clamps series C (Heavy series) – Components

DIN 3015, part 2



clamp size	AP C... Order code	weld plate dimensions:					APDC... Order code	double weld plate dimensions:					APLC... Order code	weld/screw plate dimensions:					mounting rail TS C... Order code	length: l
		d	f	g	i	m		d	f	g	i	m		g	f	i	k	n		
1	APC1...*	33	30	73	8	M10	APDC1...*	33	60	73	8	M10	APLC1...*	113	30	8	85	11	TSC1X TSC1VERZX TSC14571X	1 m
2	APC2...*	45	30	84	8	M10	APDC2...*	45	60	84	8	M10	APLC2...*	125	30	8	97	11		
3	APC3...*	60	30	100	8	M10	APDC3...*	60	60	100	8	M10	APLC3...*	140	30	8	112	11		
4	APC4...*	90	45	140	10	M12	APDC4...*	90	90	140	10	M12	APLC4...*	190	45	10	160	14	TSC2X TSC2VERZX TSC24571X	2m
5	APC5...*	122	60	180	10	M16	APDC5...*	122	120	180	10	M16	APLC5...*	240	60	10	205	18		
6	APC6...*	168	80	225	15	M20	APDC6...*	168	160	225	15	M20	APLC6...*	310	80	15	270	22		
7	APC7...*	205	90	270	15	M24	APDC7...*	205	180	270	15	M24	APLC7...*	370	90	15	320	26		
8	APC8...*	265	120	340	25	M30	APDC8...*	265	240	340	25	M30	APLC8...*	450	120	25	390	33		
9	APC9...*	395	160	520	30	M30	APDC9...*	395	330	520	30	M30								
10	APC10...*	534	180	680	30	M30	APDC10...*	534	364	680	30	M30								

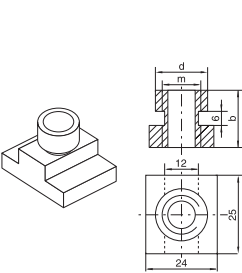
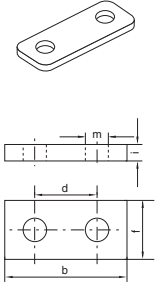
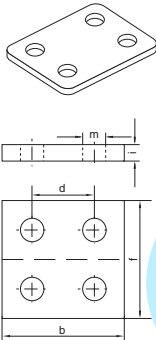
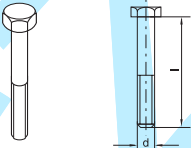
Complete programme range please refer to page T34.

*Please add the suffix below according to the surface/material required.

Order code suffixes		
Surface/material	Suffix	Example
Steel, phosphated	X	APC1X
Steel, zinc plated, Cr(VI)-free	VZX	APC1VZX
Stainless Steel 1.4571	4571X	APC14571X

Tube clamps series C (Heavy series) – Components

DIN 3015, part 2

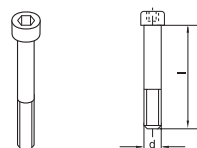
																																																																																																																																																																																																																																																																																																																																																																																																																																																																																																																																																																																																																																																																																																																																																																																																																																																																																																																																																																																																																																																																																																																																																																																																																																																																																																																																																																																																																																																																																															

*Please add the suffix below according to the surface/material required.

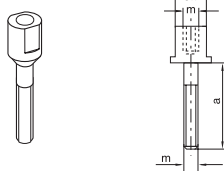
Order code suffixes		
Surface/material	Suffix	Example
Steel, phosphated	X	DPC1X
Steel, zinc plated, Cr(VI)-free	VZX	DPC1VZX
Stainless Steel 1.4571	4571X	DPC14571X

Tube clamps series C (Heavy series) – Components

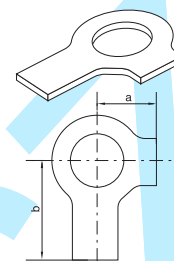
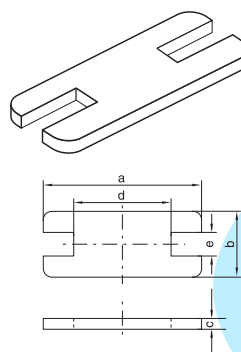
DIN 3015, part 2



ISO 4762



DIN 938



clamp size	socket head		stacking			locking plate ¹⁾					locking washer ²⁾				
	IS C... Order code	dimensions:	AS C... Order code	dimensions:			SP C... Order code	dimensions:					US C... Order code	dimensions:	
		d × L		a	m	SW		a	b	c	d	e		a	b
1	ISC1...*	M 10×45	ASC1...*	25	M10	15	SPC1...*	55	30	8	14	15.5	USC1X ³⁾ USC14571X	13	22
2	ISC2...*	M 10×60	ASC2...*	40	M10	15	SPC2...*	70	30	8	26	15.5			
3	ISC3...*	M 10×70	ASC3...*	50	M10	15	SPC3...*	85	30	8	41	15.5			
4	ISC4...*	M 12×100	ASC4...*	80	M12	17	SPC4...*	115	45	10	69	17.5	USC4X ³⁾ USC44571X	15	28
5	ISC5...*	M 16×130	ASC5...*	110	M16	21	SPC5...*	152	60	10	97	21.5	USC5X ³⁾ USC54571X	18	32
6	ISC6...*	M 20×190	ASC6...*	155	M20	27	SPC6...*	205	80	15	137	27.5	USC6X ³⁾ USC64571X	21	36
7	ISC7...*	M 24×220	ASC7...*	180	M24	30	SPC7...*	250	90	15	169	30.5	USC7X ³⁾ USC74571X	25	42
8	ISC8...*	M 30×300	ASC8...*	250	M30	36	SPC8...*	320	120	25	219	36.5	USC8X ³⁾ USC84571X	32	52
9	ISC9...*	M 30×450													
10	ISC10...*	M 30×560													

¹⁾ The use of stacking screws necessitates the use of locking plates in the construction assembly!

²⁾ When assembling solid rubber clamps, covering plates, hexagon screws and locking washers must be used.

³⁾ Material = Steel, zinc plated, Cr(VI)-free

*Please add the suffix below according to the surface/material required.

Order code suffixes		
Surface/material	Suffix	Example
Steel, phosphated	X	ISC1X
Steel, zinc plated, Cr(VI)-free	VZX	ISC1VZX
Stainless Steel 1.4571	4571X	ISC14571X

Tube clamps series C – Complete range

Order codes for clamp halves:

Material	Interior surface	Order code
Polypropylene	grooved	RCP
	smooth	RCPG ¹⁾
Polyamide	grooved	RCN
	smooth	RCNG ¹⁾
Rubber	grooved	RCVR ¹⁾²⁾
	smooth	RCVG ¹⁾²⁾
Aluminium	grooved	RCA

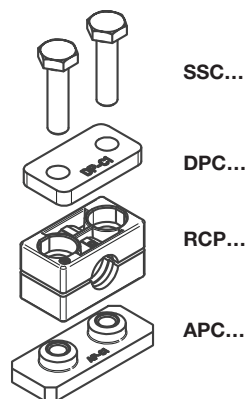
(Please exchange as required standard abbreviation RCP in column for "Order code")

For flame- or corrosion retardant materials, please refer to page T5.

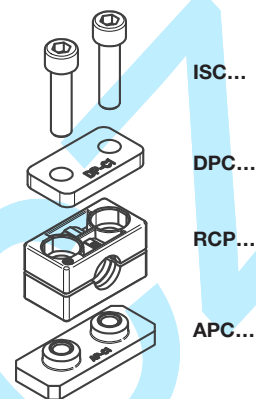
The steel parts of kits 1 and 2 are phosphated.

Other compositions available on request.

2 clamp halves, weld plate,
cover plate, hex. head bolt



2 clamp halves, weld plate,
cover plate, socket head bolt



clamp size	Tube O.D. mm	Tube NB	Tube O.D.	Order code	Order code
1	6.0	G 1/8	5/16	RCP1-106	RCP2-106
	8.0			RCP1-108	RCP2-108
	9.5			RCP1-109.5	RCP2-109.5
	10.0			RCP1-110	RCP2-110
	12.0	G 1/4	1/2	RCP1-112	RCP2-112
	12.7			RCP1-112.7	RCP2-112.7
	13.5	G 3/8	5/8	RCP1-113.5	RCP2-113.5
	14.0			RCP1-114	RCP2-114
	15.0			RCP1-115	RCP2-115
	16.0			RCP1-116	RCP2-116
2	17.2	G 1/2	3/4	RCP1-117.2	RCP2-117.2
	18.0			RCP1-118	RCP2-118
	19.0			RCP1-219	RCP2-219
	20.0			RCP1-220	RCP2-220
	21.3	G 3/4	1	RCP1-221.3	RCP2-221.3
	22.0			RCP1-222	RCP2-222
	23.0			RCP1-223	RCP2-223
	25.0			RCP1-225	RCP2-225
	25.4	G 1	1 1/4	RCP1-225.4	RCP2-225.4
	26.9			RCP1-226.9	RCP2-226.9
3	28.0			RCP1-228	RCP2-228
	30.0			RCP1-230	RCP2-230
	30.0	G 1 1/4	2	RCP1-330	RCP2-330
	32.0			RCP1-332	RCP2-332
	33.7			RCP1-333.7	RCP2-333.7
	35.0			RCP1-335	RCP2-335
4	38.0	G 1 1/2	2 1/4	RCP1-338	RCP2-338
	40.0			RCP1-340	RCP2-340
	42.0			RCP1-342	RCP2-342
	38.0	G 2	2 1/2	RCP1-438	RCP2-438
	40.0			RCP1-440	RCP2-440
	42.0			RCP1-442	RCP2-442
	45.0			RCP1-445	RCP2-445
	48.3			RCP1-448.3	RCP2-448.3
	50.0	G 2	2 1/2	RCP1-450	RCP2-450
	51.0			RCP1-451	RCP2-451
	52.0			RCP1-452	RCP2-452
	55.0			RCP1-455	RCP2-455
	57.0	G 2	2 1/2	RCP1-457	RCP2-457
	60.3			RCP1-460.3	RCP2-460.3
	63.0			RCP1-463	RCP2-463
	65.0			RCP1-465	RCP2-465
	70.0			RCP1-470	RCP2-470

Continuation see next page ...

Tube clamps series C – Complete range (Continued)

Order codes for clamp halves:

Material	Interior surface	Order code
Polypropylene	grooved	RCP
	smooth	RCPG ¹⁾
Polyamide	grooved	RCN
	smooth	RCNG ¹⁾
Rubber	grooved	RCVR ¹⁾²⁾
	smooth	RCVG ¹⁾²⁾
Aluminium	grooved	RCA

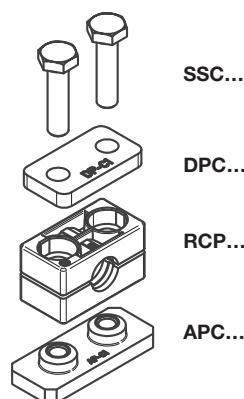
(Please exchange as required standard abbreviation RCP in column for "Order code")

For flame- or corrosion retardant materials, please refer to page T5.

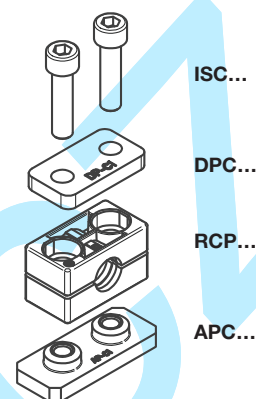
The steel parts of kits 1 and 2 are phosphated.

Other compositions available on request.

2 clamp halves, weld plate,
cover plate, hex. head bolt



2 clamp halves, weld plate,
cover plate, socket head bolt



clamp size	Tube O.D. mm	Tube NB	Tube O.D.	Order code	Order code
5	65.0	G 2 1/2	3	RCP1-565	RCP2-565
	70.0			RCP1-570	RCP2-570
	73.0			RCP1-573	RCP2-573
	75.0			RCP1-575	RCP2-575
	76.1			RCP1-576.1	RCP2-576.1
	80.0			RCP1-580	RCP2-580
	82.5	G 3	3 1/4	RCP1-582.5	RCP2-582.5
	85.0			RCP1-585	RCP2-585
	88.0			RCP1-588	RCP2-588
	88.9			RCP1-588.9	RCP2-588.9
6	90.0	G 3 1/2	4	RCP1-590	RCP2-590
	97.0			RCP1-690	RCP2-690
	100.0			RCP1-697	RCP2-697
	101.6			RCP1-6100	RCP2-6100
	108.0			RCP1-6101.6	RCP2-6101.6
	114.3	G 4	4 1/4	RCP1-6108	RCP2-6108
	115.0			RCP1-6114.3	RCP2-6114.3
	120.0			RCP1-6115	RCP2-6115
	127.0			RCP1-6120	RCP2-6120
			5	RCP1-6127	RCP2-6127
7	127.0	G 5	5 1/4	RCP1-7127	RCP2-7127
	130.0			RCP1-7130	RCP2-7130
	133.0			RCP1-7133	RCP2-7133
	140.0			RCP1-7140	RCP2-7140
	150.0	G 5 1/2	6	RCP1-7150	RCP2-7150
	152.4			RCP1-7152.4	RCP2-7152.4
	159.0	G 6	6 1/4	RCP1-7159	RCP2-7159
	165.1			RCP1-7165.1	RCP2-7165.1
8	168.3		6 5/8	RCP1-7168.3	RCP2-7168.3
	168.3	G 8	7	RCP1-8168.3	RCP2-8168.3
	177.8			RCP1-8177.8	RCP2-8177.8
	190.0			RCP1-8190	RCP2-8190
	193.7			RCP1-8193.7	RCP2-8193.7
	203.0			RCP1-8203	RCP2-8203
	219.1			RCP1-8219.1	RCP2-8219.1
	220.0			RCP1-8220	RCP2-8220
9	219.1	G 8	8 5/8	RCP1-9219.1	RCP2-9219.1
	244.5			RCP1-9244.5	RCP2-9244.5
	273.0			RCP1-9273	RCP2-9273
10	323.9	G 10	10 3/4	RCP1-9323.9	RCP2-9323.9
		G 12	12 3/4		
	355.6	G 14		RCP1-10355.6	RCP2-10355.6
	406.4	G 16		RCP1-10406.4	RCP2-10406.4

Delivery in unassembled individual components.

¹⁾ Only sizes 1–8

²⁾ When assembling solid rubber clamps, covering plates, hexagon screws and locking washers must be used.

Tube clamps series C – Complete range

Order codes for clamp halves:

Material	Interior surface	Order code
Polypropylene	grooved	RCP
	smooth	RCPG ¹⁾
Polyamide	grooved	RCN
	smooth	RCNG ¹⁾
Rubber	grooved	RCVR ¹⁾²⁾
	smooth	RCVG ¹⁾²⁾
Aluminium	grooved	RCA

(Please exchange as required standard abbreviation RCP in column for "Order code")

For flame- or corrosion retardant materials, please refer to page T5.

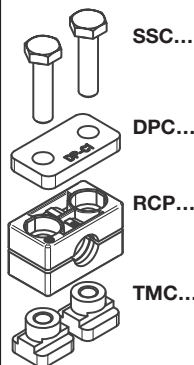
The steel parts of kits 3, 4 and 5 have the following surfaces:

Bolts, cover plate, locking plate = phosphated

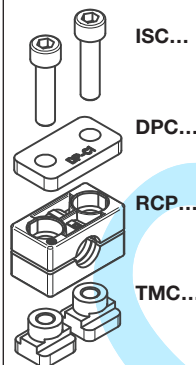
Rail nuts = Cr(VI)-free galvanized

Other compositions available on request.

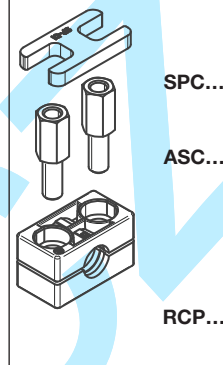
2 clamp halves,
rail nuts, cover plate,
hex. head bolts



2 clamp halves,
rail nuts, cover plate,
socket head bolts



2 clamp halves, lock-
ing plate, stacking
bolts



clamp size	Tube O.D. mm	Tube NB	Tube O.D.	Order code	Order code	Order code
1	6.0	G 1/8	5/16	RCP3-106	RCP4-106	RCP5-106
	8.0			RCP3-108	RCP4-108	RCP5-108
	9.5		3/8	RCP3-109.5	RCP4-109.5	RCP5-109.5
	10.0		1/2	RCP3-110	RCP4-110	RCP5-110
	12.0	RCP3-112		RCP4-112	RCP5-112	
	12.7	RCP3-112.7		RCP4-112.7	RCP5-112.7	
	13.5	RCP3-113.5		RCP4-113.5	RCP5-113.5	
	14.0	5/8	RCP3-114	RCP4-114	RCP5-114	
	15.0		RCP3-115	RCP4-115	RCP5-115	
	16.0		RCP3-116	RCP4-116	RCP5-116	
17.2	RCP3-117.2		RCP4-117.2	RCP5-117.2		
18.0		RCP3-118	RCP4-118	RCP5-118		
2	19.0	G 1/2	3/4	RCP3-219	RCP4-219	RCP5-219
	20.0			RCP3-220	RCP4-220	RCP5-220
	21.3		RCP3-221.3	RCP4-221.3	RCP5-221.3	
	22.0		RCP3-222	RCP4-222	RCP5-222	
	23.0	1	RCP3-223	RCP4-223	RCP5-223	
	25.0		RCP3-225	RCP4-225	RCP5-225	
	25.4		RCP3-225.4	RCP4-225.4	RCP5-225.4	
	26.9		RCP3-226.9	RCP4-226.9	RCP5-226.9	
	28.0	G 3/4	RCP3-228	RCP4-228	RCP5-228	
	30.0		RCP3-230	RCP4-230	RCP5-230	
3	30.0	G 1	1 1/4	RCP3-330	RCP4-330	RCP5-330
	32.0			RCP3-332	RCP4-332	RCP5-332
	33.7		RCP3-333.7	RCP4-333.7	RCP5-333.7	
	35.0		1 1/2	RCP3-335	RCP4-335	RCP5-335
	38.0	RCP3-338		RCP4-338	RCP5-338	
	40.0	RCP3-340		RCP4-340	RCP5-340	
	42.0	G 1 1/4	RCP3-342	RCP4-342	RCP5-342	
4	38.0	G 1 1/4	1 1/2	RCP3-438	RCP4-438	RCP5-438
	40.0			RCP3-440	RCP4-440	RCP5-440
	42.0		RCP3-442	RCP4-442	RCP5-442	
	45.0		RCP3-445	RCP4-445	RCP5-445	
	48.3	G 1 1/2	2	RCP3-448.3	RCP4-448.3	RCP5-448.3
	50.0			RCP3-450	RCP4-450	RCP5-450
	51.0		2 1/4	RCP3-451	RCP4-451	RCP5-451
	52.0			RCP3-452	RCP4-452	RCP5-452
	55.0	RCP3-455		RCP4-455	RCP5-455	
	57.0	G 2		2 1/4	RCP3-457	RCP4-457
	60.3		RCP3-460.3		RCP4-460.3	RCP5-460.3
	63.0		2 1/2	RCP3-463	RCP4-463	RCP5-463
	65.0			RCP3-465	RCP4-465	RCP5-465
	70.0			RCP3-470	RCP4-470	RCP5-470

Continuation see next page ...

Tube clamps series C – Complete range (Continued)

Order codes for clamp halves:

Material	Interior surface	Order code
Polypropylene	grooved	RCP
	smooth	RCPG¹⁾
Polyamide	grooved	RCN
	smooth	RCNG¹⁾
Rubber	grooved	RCVR¹⁾²⁾
	smooth	RCVG¹⁾²⁾
Aluminium	grooved	RCA

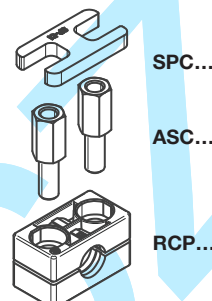
(Please exchange as required standard abbreviation RCP in column for "Order code")

For flame- or corrosion retardant materials, please refer to page T5.

The steel parts of kits 5 are phosphated.

Other compositions available on request.

2 clamp halves, locking plate, stacking bolts



clamp size	Tube O.D. mm	Tube NB	Tube O.D.	Order code
5	65.0	G 2 1/2	3	RCP5-565
	70.0			RCP5-570
	73.0			RCP5-573
	75.0			RCP5-575
	76.1			RCP5-576.1
	80.0	G 3	3 1/4	RCP5-580
	82.5			RCP5-582.5
	85.0			RCP5-585
	88.0			RCP5-588
	88.9			RCP5-588.9
6	90.0	G 3 1/2	3 1/2	RCP5-590
	97.0			RCP5-595
	100.0			RCP5-600
	101.6			RCP5-6101.6
	108.0	G 4	4	RCP5-6108
	114.3			RCP5-6114.3
	115.0			RCP5-6115
	120.0			RCP5-6120
	127.0			RCP5-6127
7	127.0	G 5	5	RCP5-7127
	130.0			RCP5-7130
	133.0			RCP5-7133
	140.0			RCP5-7140
	150.0	G 5 1/2	5 1/4	RCP5-7150
	152.4			RCP5-7152.4
	159.0			RCP5-7159
	165.1			RCP5-7165.1
	168.3	G 6	6	RCP5-7168.3
8	168.3		6 1/4	RCP5-8168.3
	177.8			RCP5-8177.8
	190.0			RCP5-8190
	193.7			RCP5-8193.7
	203.0			RCP5-8203
	219.1	G 8	6 1/2	RCP5-8219.1
	220.0			RCP5-8220

Delivery in unassembled individual components.

¹⁾ Only sizes 1–8

²⁾ When assembling solid rubber clamps, covering plates, hexagon screws and locking washers must be used.