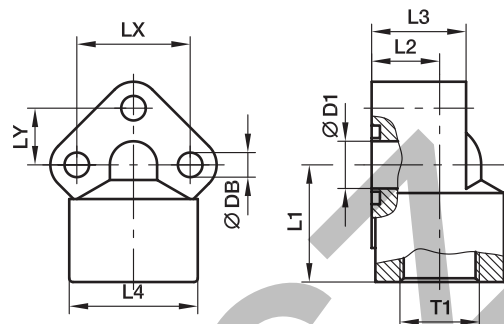


## PWDA Gear pump flange 90° elbow 3 holes – aluminium

Hydraulic flange / Female BSPP thread



PWDA 90° Female BSPP thread

Pump size	LK	T1	D1	L1	L2	L3	L4	LX	LY	DB	Bolts (metr.)	O-ring	Weight (steel) kg/piece	Order code*	PN (bar) <sup>1)</sup> A
0.5	26	<b>G 3/8</b>	10.0	31	18.0	25	31	26	13.0	5.5	M 05×35	14.00×1.78	0.10	<b>PWDA-05/38</b>	180
0.5	26	<b>G 1/2</b>	10.0	31	18.0	25	31	26	13.0	5.5	M 05×35	14.00×1.78	0.10	<b>PWDA-05/12</b>	180
1.0	30	<b>G 3/8</b>	12.5	31	18.0	26	34	30	15.0	6.5	M 06×35	15.88×2.62	0.13	<b>PWDA-1/38</b>	180
1.0	30	<b>G 1/2</b>	12.5	31	18.0	26	34	30	15.0	6.5	M 06×35	15.88×2.62	0.14	<b>PWDA-1/12</b>	180
2.0	40	<b>G 1/2</b>	18.0	40	21.5	31	42	40	20.0	8.5	M 08×45	22.22×2.62	0.26	<b>PWDA-2/12</b>	180
2.0	40	<b>G 3/4</b>	18.0	40	21.5	31	42	40	20.0	8.5	M 08×45	22.22×2.62	0.26	<b>PWDA-2/34</b>	180
3.0*	51 -56	<b>G 3/4</b>	24.5	46	26.0	42	49	51 -56	25.5 -28	11.0	M 10×60	29.75×3.53	0.52	<b>PWDA-3/34</b>	180
3.0*	51 -56	<b>G 1</b>	24.5	46	26.0	42	49	51 -56	25.5 -28	11.0	M 10×60	29.75×3.53	0.50	<b>PWDA-3/100</b>	180

<sup>1)</sup> Pressure shown = Item deliverable

\*Oval drill hole

$$\frac{PN \text{ (bar)}}{10} = PN \text{ (MPa)}$$

\*Please add the **suffixes** below according to the material/surface required.

Order code suffixes			
Material	Suffix surface and material	Example incl. metr. bolts and O-ring	Standard sealing material (no additional suffix needed)
Aluminium	A	PWDA-05/38AM	NBR