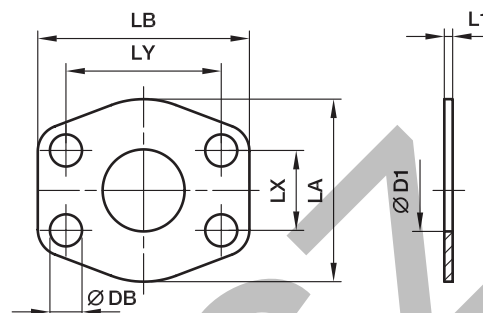


CPM SAE Flange connector plate

ISO 6162-1/-2



3000 PSI Series

| Nom. flange size | | D1 | L1 | LA | LB | LX | LY | DB | Weight (steel) kg/piece | Order code* | PN (bar) ¹⁾ | |
|------------------|-------------|-----|----|-----|-----|------|-------|------|-------------------------------|---------------|---------------------------|-----|
| SAE (in.) | ISO (DN) | | | | | | | | | | CF | SS |
| 1/2 | 13 | 13 | 3 | 47 | 57 | 17.5 | 38.1 | 9.0 | 0.05 | 8CPM1 | 345 | 345 |
| 3/4 | 19 | 19 | 3 | 49 | 66 | 22.3 | 47.6 | 11.0 | 0.05 | 12CPM1 | 345 | 345 |
| 1 | 25 | 25 | 3 | 53 | 71 | 26.2 | 52.4 | 11.0 | 0.07 | 16CPM1 | 345 | 345 |
| 1 1/4 | 32 | 32 | 3 | 69 | 80 | 30.2 | 58.7 | 11.5 | 0.09 | 20CPM1 | 276 | 276 |
| 1 1/2 | 38 | 38 | 3 | 77 | 95 | 35.7 | 69.9 | 13.5 | 0.12 | 24CPM1 | 207 | 207 |
| 2 | 51 | 51 | 3 | 89 | 103 | 42.9 | 77.8 | 13.5 | 0.13 | 32CPM1 | 207 | 207 |
| 2 1/2 | 64 | 63 | 3 | 101 | 116 | 50.8 | 88.9 | 13.5 | 0.15 | 40CPM1 | 172 | 172 |
| 3 | 76 | 73 | 4 | 124 | 136 | 61.9 | 106.4 | 17.0 | 0.29 | 48CPM1 | 138 | 138 |
| 3 1/2 | 89 | 89 | 4 | 136 | 152 | 69.9 | 120.7 | 17.0 | 0.34 | 56CPM1 | 34 | 34 |
| 4 | 102 | 99 | 4 | 146 | 162 | 77.8 | 130.2 | 17.0 | 0.46 | 64CPM1 | 34 | 34 |
| 5 | 127 | 120 | 4 | 180 | 184 | 92.1 | 152.4 | 17.0 | 0.50 | 80CPM1 | 34 | 34 |

6000 PSI Series

| | | | | | | | | | | | | |
|-------|----|----|---|-----|-----|------|-------|------|------|---------------|-----|-----|
| 1/2 | 13 | 13 | 4 | 47 | 57 | 18.2 | 40.5 | 9.0 | 0.08 | 8CPM2 | 420 | 420 |
| 3/4 | 19 | 17 | 4 | 53 | 71 | 23.8 | 50.8 | 11.0 | 0.11 | 12CPM2 | 420 | 420 |
| 1 | 25 | 24 | 4 | 66 | 80 | 27.8 | 57.2 | 13.0 | 0.14 | 16CPM2 | 420 | 420 |
| 1 1/4 | 32 | 31 | 4 | 77 | 94 | 31.8 | 66.6 | 15.0 | 0.20 | 20CPM2 | 420 | 420 |
| 1 1/2 | 38 | 38 | 4 | 89 | 103 | 36.5 | 79.3 | 17.0 | 0.24 | 24CPM2 | 420 | 420 |
| 2 | 51 | 51 | 4 | 123 | 135 | 44.5 | 96.8 | 21.0 | 0.30 | 32CPM2 | 420 | 420 |
| 2 1/2 | 64 | 63 | 4 | 150 | 166 | 58.7 | 123.8 | 25.0 | 0.50 | 40CPM2 | 420 | 420 |
| 3 | 76 | 73 | 4 | 178 | 208 | 71.4 | 152.4 | 32.0 | 0.73 | 48CPM2 | 420 | 420 |

¹⁾Pressure shown = Item deliverable

$$\frac{\text{PN (bar)}}{10} = \text{PN (MPa)}$$

Stainless steel parts may have dimensional deviations. Additional information on request.

*Please add the **suffixes** below according to the material/surface required.

| Order code suffixes | | | |
|---------------------------------|-----------------------------------|---------|----------------------|
| Material | Suffix surface and material | Example | Description |
| Steel, zinc plated, Cr(VI)-free | CF | 8CPM1CF | only connector plate |
| Stainless steel | SS | 8CPM1SS | only connector plate |