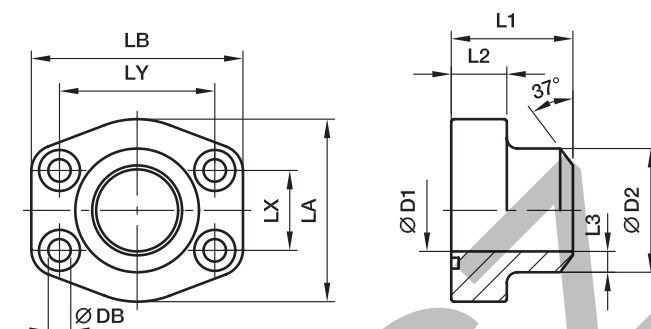


PAFS-B SAE Straight 4 bolt flange (butt weld)

SAE Flange / Butt weld tube end
(ISO 6162-1/-2)



3000 PSI Series

| Nom. flange size | | max. | D1 | D2 | L1 | L2 | L3 | LA | LB | LX | LY | DB | Bolts | | Weight (steel) kg/piece | Order code* | PN (bar) ¹⁾ | |
|------------------|-------------|-------|-----|-------|----|----|------|-----|-----|------|-------|---------|---------|------------|-------------------------------|-----------------|---------------------------|-----|
| SAE (in.) | ISO (DN) | | | | | | | | | | | | (metr.) | (unc.) | | | S | SS |
| 1/2 | 13 | 21.3 | 13 | 21.6 | 36 | 16 | 4.3 | 46 | 58 | 17.5 | 38.1 | 8.9 | M 08×30 | 5/16×1 1/4 | 0.28 | PAFS080B | 345 | 345 |
| 3/4 | 19 | 26.9 | 19 | 27.2 | 36 | 18 | 4.1 | 49 | 66 | 22.3 | 47.6 | 10.6 | M 10×35 | 3/8×1 1/2 | 0.36 | PAFS100B | 345 | 345 |
| 1 | 25 | 33.7 | 25 | 34.5 | 38 | 18 | 4.7 | 53 | 71 | 26.2 | 52.4 | 10.6 | M 10×35 | 3/8×1 1/2 | 0.46 | PAFS102B | 345 | 345 |
| 1 1/4 | 32 | 42.4 | 31 | 42.8 | 41 | 21 | 5.9 | 69 | 81 | 30.2 | 58.7 | 10.6*** | M 10×40 | 7/16×1 1/2 | 0.69 | PAFS104B | 276 | 276 |
| 1 1/2 | 38 | 48.3 | 38 | 48.6 | 44 | 25 | 5.3 | 77 | 94 | 35.7 | 69.9 | 13.3 | M 12×45 | 1/2×1 3/4 | 1.01 | PAFS106B | 207 | 207 |
| 2 | 51 | 60.3 | 50 | 61.0 | 45 | 25 | 5.5 | 89 | 103 | 42.9 | 77.8 | 13.3 | M 12×45 | 1/2×1 3/4 | 1.16 | PAFS108B | 207 | 207 |
| 2 1/2 | 64 | 76.1 | 63 | 76.6 | 50 | 25 | 6.8 | 101 | 115 | 50.8 | 88.9 | 13.3 | M 12×45 | 1/2×1 3/4 | 1.45 | PAFS110B | 172 | 172 |
| 3 | 76 | 88.9 | 73 | 89.0 | 50 | 27 | 8.0 | 124 | 135 | 61.9 | 106.4 | 16.7 | M 16×55 | 5/8×2 1/4 | 2.29 | PAFS112B | 138 | 138 |
| 3 1/2 | 89 | 101.6 | 89 | 103.0 | 50 | 27 | 7.0 | 134 | 153 | 69.9 | 120.7 | 16.7 | M 16×55 | 5/8×2 1/4 | 2.80 | PAFS114B | 34 | 34 |
| 4 | 102 | 114.3 | 99 | 115.0 | 50 | 27 | 8.0 | 147 | 163 | 77.8 | 130.2 | 16.7 | M 16×55 | 5/8×2 1/4 | 3.30 | PAFS116B | 34 | 34 |
| 5 | 127 | 140.0 | 120 | 141.0 | 50 | 28 | 10.5 | 180 | 184 | 92.1 | 152.4 | 16.7 | M 16×55 | 5/8×2 1/4 | 4.50 | PAFS118B | 34 | 34 |

6000 PSI Series

| | | | | | | | | | | | | | | | | | | |
|-------|----|------|----|------|----|----|------|-----|-----|------|-------|---------|----------|------------|-------|--------------------|-----|-----|
| 1/2 | 13 | 17.2 | 10 | 17.5 | 36 | 16 | 3.7 | 46 | 58 | 18.2 | 40.5 | 8.9 | M 08×30 | 5/16×1 1/4 | 0.28 | PAFS401B38 | 420 | 420 |
| 1/2 | 13 | 21.3 | 13 | 21.6 | 36 | 16 | 4.3 | 46 | 58 | 18.2 | 40.5 | 8.9 | M 08×30 | 5/16×1 1/4 | 0.28 | PAFS401B | 420 | 420 |
| 3/4 | 19 | 26.9 | 18 | 27.2 | 36 | 18 | 4.6 | 53 | 72 | 23.8 | 50.8 | 10.6 | M 10×35 | 3/8×1 1/2 | 0.48 | PAFS402B | 420 | 420 |
| 1 | 25 | 33.7 | 22 | 34.5 | 44 | 24 | 6.3 | 68 | 81 | 27.8 | 57.2 | 10.6*** | M 12×45 | 7/16×1 1/2 | 0.80 | PAFS403B | 420 | 420 |
| 1 1/4 | 32 | 42.4 | 28 | 42.8 | 44 | 27 | 7.4 | 78 | 95 | 31.8 | 66.6 | 15.0** | M 14×50 | 1/2×1 3/4 | 1.17 | PAFS404B | 420 | 420 |
| 1 1/4 | 32 | 42.4 | 28 | 42.8 | 44 | 27 | 7.4 | 78 | 95 | 31.8 | 66.6 | 13.3 | M 12×50 | – | 1.17 | PAFS404/12B | 420 | 420 |
| 1 1/2 | 38 | 48.3 | 32 | 48.6 | 51 | 30 | 8.3 | 89 | 106 | 36.5 | 79.4 | 16.7 | M 16×55 | 5/8×2 1/4 | 1.60 | PAFS405B | 420 | 420 |
| 2 | 51 | 60.3 | 41 | 61.0 | 70 | 37 | 10.0 | 116 | 135 | 44.5 | 96.8 | 20.6 | M 20×70 | 3/4×2 3/4 | 3.50 | PAFS406B | 420 | 420 |
| 2 1/2 | 64 | 76.1 | 50 | 76.6 | 75 | 45 | 13.0 | 150 | 166 | 58.7 | 123.8 | 25.0 | M 24×90 | – | 6.25 | PAFS407B | 420 | 420 |
| 3 | 76 | 88.9 | 58 | 90.0 | 90 | 55 | 16.0 | 178 | 208 | 71.4 | 152.4 | 32.0 | M 30×110 | – | 12.25 | PAFS408B | 420 | 420 |

**DB = 13.3 for UNC Bolts

***DB = 12 for UNC Bolts

¹⁾Pressure shown = Item deliverable

$$\frac{\text{PN (bar)}}{10} = \text{PN (MPa)}$$

The pressures given here are the maximum allowable for the flange fittings. If the pipe or tube used has a lower pressure rating, then the welded assembly rating will be the lower one, assuming the weld is adequately strong.

Stainless steel parts may have dimensional deviations. Additional information on request.

*Please add the **suffixes** below according to the material/surface required.

| Order code suffixes | | | | | |
|-------------------------|-----------------------------|----------------------------|--|--|---|
| Material | Suffix surface and material | Example only 4 bolt flange | Example 4 bolt flange incl. metr. bolts and O-ring | Example 4 bolt flange incl. UNC bolts and O-ring | Standard sealing material (no additional suffix needed) |
| Steel, blanc oil dipped | S | PAFS080BS | PAFS080BSM | PAFS080BSU | NBR |
| Stainless steel | SS | PAFS080BSS | PAFS080BSSM | – | VIT |