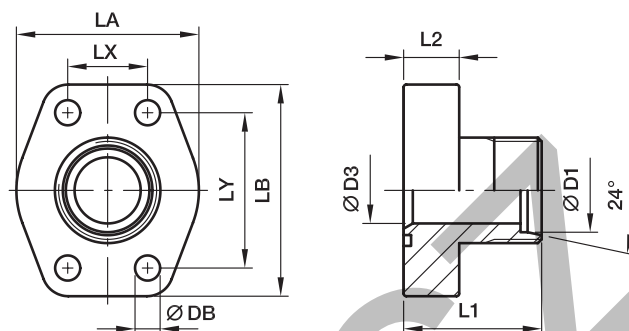



# PFF-..S/L SAE Straight 4 bolt flange with EO 24° cone end

SAE Flange / EO 24° cone end  
(ISO 6162-1/-2)



## 3000 PSI Series

| Nom. flange size |             | D1 <sup>2)</sup>  |    |    |    |    |     |      |      |         | Bolts   |            | Weight<br>(steel)<br>kg/piece | Order code* | PN<br>(bar <sup>1)</sup> ) |     |
|------------------|-------------|---|----|----|----|----|-----|------|------|---------|---------|------------|-------------------------------|-------------|----------------------------|-----|
| SAE<br>(in.)     | ISO<br>(DN) |  | D3 | L1 | L2 | LA | LB  | LX   | LY   | DB      | (metr.) | (unc.)     |                               |             | CF                         | SS  |
| 1/2              | 13          | 12S   | 8  | 47 | 16 | 42 | 57  | 17.5 | 38.1 | 8.9     | M 08×30 | 5/16×1 1/4 | 0.27                          | PFF32/12S   | 348                        | 348 |
| 1/2              | 13          | 15L   | 11 | 47 | 16 | 42 | 57  | 17.5 | 38.1 | 8.9     | M 08×30 | 5/16×1 1/4 | 0.27                          | PFF32/15L   | 348                        | 315 |
| 1/2              | 13          | 16S   | 12 | 47 | 16 | 42 | 57  | 17.5 | 38.1 | 8.9     | M 08×30 | 5/16×1 1/4 | 0.27                          | PFF32/16S   | 348                        | 348 |
| 3/4              | 19          | 16S   | 12 | 52 | 18 | 50 | 66  | 22.3 | 47.6 | 10.6    | M 10×35 | 3/8×1 1/2  | 0.42                          | PFF33/16S   | 348                        | 348 |
| 3/4              | 19          | 20S   | 16 | 52 | 18 | 50 | 66  | 22.3 | 47.6 | 10.6    | M 10×35 | 3/8×1 1/2  | 0.45                          | PFF33/20S   | 348                        | 348 |
| 3/4              | 19          | 22L   | 18 | 52 | 18 | 50 | 66  | 22.3 | 47.6 | 10.6    | M 10×35 | 3/8×1 1/2  | 0.44                          | PFF33/22L   | 250                        | 160 |
| 1                | 25          | 20S   | 16 | 55 | 18 | 55 | 71  | 26.2 | 52.4 | 10.6    | M 10×35 | 3/8×1 1/2  | 0.54                          | PFF34/20S   | 348                        | 348 |
| 1                | 25          | 25S   | 20 | 55 | 18 | 55 | 71  | 26.2 | 52.4 | 10.6    | M 10×35 | 3/8×1 1/2  | 0.55                          | PFF34/25S   | 348                        | 348 |
| 1                | 25          | 28L   | 23 | 55 | 18 | 55 | 71  | 26.2 | 52.4 | 10.6    | M 10×35 | 3/8×1 1/2  | 0.53                          | PFF34/28L   | 250                        | 160 |
| 1 1/4            | 32          | 25S   | 20 | 60 | 21 | 66 | 80  | 30.2 | 58.7 | 10.6*** | M 10×40 | 7/16×1 1/2 | 0.83                          | PFF35/25S   | 278                        | 278 |
| 1 1/4            | 32          | 30S   | 25 | 60 | 21 | 66 | 80  | 30.2 | 58.7 | 10.6*** | M 10×40 | 7/16×1 1/2 | 0.85                          | PFF35/30S   | 278                        | 278 |
| 1 1/4            | 32          | 35L   | 30 | 60 | 21 | 66 | 80  | 30.2 | 58.7 | 10.6*** | M 10×40 | 7/16×1 1/2 | 0.79                          | PFF35/35L   | 278                        | 278 |
| 1 1/2            | 38          | 35L   | 30 | 70 | 25 | 77 | 94  | 35.7 | 69.9 | 13.3    | M 12×45 | 1/2×1 3/4  | 1.25                          | PFF36/35L   | 210                        | 210 |
| 1 1/2            | 38          | 38S   | 32 | 70 | 25 | 77 | 94  | 35.7 | 69.9 | 13.3    | M 12×45 | 1/2×1 3/4  | 1.30                          | PFF36/38S   | 210                        | 210 |
| 1 1/2            | 38          | 42L   | 36 | 70 | 25 | 77 | 94  | 35.7 | 69.9 | 13.3    | M 12×45 | 1/2×1 3/4  | 1.21                          | PFF36/42L   | 210                        | 210 |
| 2                | 51          | 38S   | 32 | 72 | 25 | 90 | 103 | 42.9 | 77.8 | 13.3    | M 12×45 | 1/2×1 3/4  | 1.80                          | PFF38/38S   | 210                        | 210 |
| 2                | 51          | 42L   | 36 | 72 | 25 | 90 | 103 | 42.9 | 77.8 | 13.3    | M 12×45 | 1/2×1 3/4  | 1.60                          | PFF38/42L   | 210                        | 210 |

## 6000 PSI Series

|       |    |     |    |    |    |    |     |      |      |         |         |            |      |              |     |     |
|-------|----|-----|----|----|----|----|-----|------|------|---------|---------|------------|------|--------------|-----|-----|
| 1/2   | 13 | 12S | 8  | 47 | 16 | 47 | 57  | 18.2 | 40.5 | 8.9     | M 08x30 | 5/16x1 1/4 | 0.27 | PFF62/12S    | 420 | 420 |
| 1/2   | 13 | 14S | 10 | 47 | 16 | 47 | 57  | 18.2 | 40.5 | 8.9     | M 08x30 | 5/16x1 1/4 | 0.27 | PFF62/14S    | 420 | 420 |
| 1/2   | 13 | 16S | 12 | 47 | 16 | 47 | 57  | 18.2 | 40.5 | 8.9     | M 08x30 | 5/16x1 1/4 | 0.27 | PFF62/16S    | 420 | 420 |
| 3/4   | 19 | 16S | 12 | 52 | 18 | 53 | 71  | 23.8 | 50.8 | 10.6    | M 10x35 | 3/8x1 1/2  | 0.50 | PFF63/16S    | 420 | 420 |
| 3/4   | 19 | 20S | 16 | 52 | 18 | 53 | 71  | 23.8 | 50.8 | 10.6    | M 10x35 | 3/8x1 1/2  | 0.51 | PFF63/20S    | 420 | 400 |
| 3/4   | 19 | 22L | 18 | 52 | 18 | 53 | 71  | 23.8 | 50.8 | 10.6    | M 10x35 | 3/8x1 1/2  | 0.51 | PFF63/22L    | 250 | 160 |
| 1     | 25 | 20S | 16 | 60 | 21 | 66 | 80  | 27.8 | 57.2 | 13.3*** | M 12x45 | 7/16x1 1/2 | 0.80 | PFF64/20S    | 420 | 400 |
| 1     | 25 | 25S | 20 | 60 | 21 | 66 | 80  | 27.8 | 57.2 | 13.3*** | M 12x45 | 7/16x1 1/2 | 0.80 | PFF64/25S    | 420 | 400 |
| 1     | 25 | 28L | 23 | 60 | 21 | 66 | 80  | 27.8 | 57.2 | 13.3*** | M 12x45 | 7/16x1 1/2 | 0.75 | PFF64/28L    | 250 | 160 |
| 1 1/4 | 32 | 25S | 20 | 68 | 24 | 78 | 94  | 31.8 | 66.6 | 15.0**  | M 14x50 | 1/2x1 3/4  | 1.15 | PFF65/25S    | 420 | 400 |
| 1 1/4 | 32 | 30S | 25 | 68 | 24 | 78 | 94  | 31.8 | 66.6 | 15.0**  | M 14x50 | 1/2x1 3/4  | 1.18 | PFF65/30S    | 420 | 400 |
| 1 1/4 | 32 | 35L | 30 | 68 | 24 | 78 | 94  | 31.8 | 66.6 | 15.0**  | M 14x50 | 1/2x1 3/4  | 1.15 | PFF65/35L    | 250 | 160 |
| 1 1/4 | 32 | 35L | 30 | 68 | 24 | 78 | 94  | 31.8 | 66.6 | 13.3    | M 12x50 | -          | 1.15 | PFF65/12/35L | 250 | 160 |
| 1 1/4 | 32 | 38S | 32 | 68 | 24 | 78 | 94  | 31.8 | 66.6 | 15.0**  | M 14x50 | 1/2x1 3/4  | 1.28 | PFF65/38S    | 420 | 315 |
| 1 1/4 | 32 | 38S | 32 | 68 | 24 | 78 | 94  | 31.8 | 66.6 | 13.3    | M 12x50 | -          | 1.28 | PFF65/12/38S | 420 | 315 |
| 1 1/2 | 38 | 35L | 25 | 72 | 27 | 90 | 106 | 36.5 | 79.3 | 16.7    | M 16x55 | 5/8x2 1/4  | 1.60 | PFF66/35L    | 250 | 160 |
| 1 1/2 | 38 | 38S | 32 | 72 | 27 | 90 | 106 | 36.5 | 79.3 | 16.7    | M 16x55 | 5/8x2 1/4  | 1.70 | PFF66/38S    | 315 | 315 |
| 1 1/2 | 38 | 42L | 36 | 72 | 27 | 90 | 106 | 36.5 | 79.3 | 16.7    | M 16x55 | 5/8x2 1/4  | 1.60 | PFF66/42L    | 250 | 160 |

<sup>2)</sup> L = light series; S = heavy series

Delivery without nut and ring.

\*\* DB = 13.3 for UNC Bolts

Information on ordering complete fittings

\*\*\*DB = 12 for UNC Bolts

or alternative sealing materials see page N12.

Stainless steel parts may have dimensional deviations.

Additional information on request.

\*Please add the suffixes below according to the material/surface required.

<sup>1)</sup> Pressure shown = Item deliverable

$\frac{PN \text{ (bar)}}{10} = PN \text{ (MPa)}$

| Order code suffixes             |                             |                            |  |  |   |
|---------------------------------|-----------------------------|----------------------------|--|--|---|
| Material                        | Suffix surface and material | Example only 4 bolt flange | Example 4 bolt flange incl. metr. bolts and O-ring | Example 4 bolt flange incl. UNC bolts and O-ring | Standard sealing material (no additional suffix needed) |
| Steel, zinc plated, Cr(VI)-free | CF                          | PFF32/12SCF                | PFF32/12SOMDCFM                                    | PFF32/12SOMDCFU                                  | NBR   |
| Stainless steel                 | SS                          | PFF32/12S-SS               | PFF32/12SOMDSSM                                    | -  | VIT   |