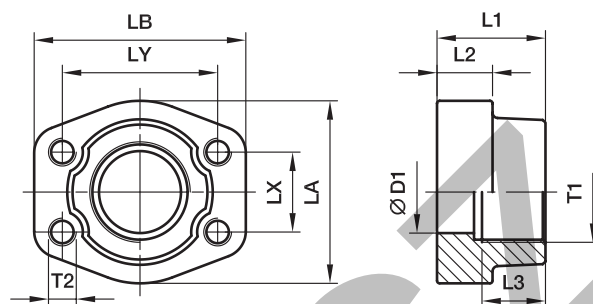


## PCFF-G SAE Straight 4 bolt flange with BSPP thread

SAE Counter flange / Female BSPP thread  
(ISO 6162-1/-2)



### 3000 PSI Series

Nom. flange size		T1	D1	L1	L2	L3	LA	LB	LX	LY	T2		Weight (steel) kg/piece	Order code*	PN (bar <sup>1)</sup> )	
SAE (in.)	ISO (DN)										(metr.)	(unc.)			S	SS
1/2	13	<b>G 3/8</b>	13	36	16	15.0	46	57	17.5	38.1	M 8	5/16	0.33	<b>PCFF32G38</b>	345	345
1/2	13	<b>G 1/2</b>	13	36	16	18.0	46	54	17.5	38.1	M 8	5/16	0.29	<b>PCFF32G</b>	345	345
3/4	19	<b>G 3/4</b>	19	36	18	19.0	52	65	22.3	47.6	M10	3/8	0.34	<b>PCFF33G</b>	345	345
3/4	19	<b>G 1/2</b>	13	36	18	19.0	50	65	22.3	47.6	M10	3/8	0.42	<b>PCFF33G12</b>	345	345
1	25	<b>G 1</b>	25	38	18	20.5	59	70	26.2	52.4	M10	3/8	0.47	<b>PCFF34G</b>	345	345
1	25	<b>G 3/4</b>	19	35	21	19.0	55	70	26.2	52.4	M10	3/8	0.56	<b>PCFF34G34</b>	345	345
1 1/4	32	<b>G 1 1/4</b>	32	40	21	22.0	68	79	30.2	58.7	M10	7/16	0.68	<b>PCFF35G</b>	276	276
1 1/4	32	<b>G 1</b>	25	42	25	22.0	65	80	30.2	58.7	M10	7/16	0.84	<b>PCFF35G1</b>	276	276
1 1/2	38	<b>G 1 1/2</b>	38	45	25	24.0	78	93	35.7	69.9	M12	1/2	1.12	<b>PCFF36G</b>	207	207
1 1/2	38	<b>G 1 1/4</b>	32	45	27	22.0	78	95	35.7	69.9	M12	1/2	1.22	<b>PCFF36G114</b>	207	207
2	51	<b>G 2</b>	50	45	25	26.0	89	103	42.9	77.8	M12	1/2	1.38	<b>PCFF38G</b>	207	207
2	51	<b>G 1 1/2</b>	38	45	25	24.0	89	103	42.9	77.8	M12	1/2	1.59	<b>PCFF38G112</b>	207	207
2 1/2	64	<b>G 2 1/2</b>	63	50	25	30.0	101	115	50.8	88.9	M12	1/2	1.66	<b>PCFF310G</b>	172	172
2 1/2	64	<b>G 2</b>	51	50	25	30.0	101	115	50.8	88.9	M12	1/2	2.09	<b>PCFF310G2</b>	172	172
3	76	<b>G 3</b>	73	50	27	30.0	124	135	61.9	106.4	M16	5/8	2.37	<b>PCFF312G</b>	138	138
3	76	<b>G 2 1/2</b>	63	50	27	30.0	124	135	61.9	106.4	M16	5/8	2.65	<b>PCFF312G212</b>	138	138
3 1/2	89	<b>G 3 1/2</b>	89	50	27	30.0	136	152	69.9	120.7	M16	5/8	2.51	<b>PCFF314G</b>	34	34
3 1/2	89	<b>G 3</b>	73	48	27	34.0	136	152	69.9	120.7	M16	5/8	3.37	<b>PCFF314G3</b>	34	34
4	102	<b>G 4</b>	99	50	27	30.0	146	162	77.8	130.2	M16	5/8	2.87	<b>PCFF316G</b>	34	34
4	102	<b>G 3 1/2</b>	89	48	27	34.0	146	162	77.8	130.2	M16	5/8	3.39	<b>PCFF316G312</b>	34	34
5	127	<b>G 5</b>	120	50	28	30.0	180	184	92.1	152.4	M16	5/8	5.80	<b>PCFF320G</b>	34	34

### 6000 PSI Series

1/2	13	<b>G 3/8</b>	13	36	16	13.0	46	57	18.2	40.5	M 8	5/16	0.33	<b>PCFF62G38</b>	420	420
1/2	13	<b>G 1/2</b>	13	36	16	19.0	46	57	18.2	40.5	M 8	5/16	0.29	<b>PCFF62G</b>	420	420
3/4	19	<b>G 3/4</b>	19	35	21	22.0	55	71	23.8	50.8	M10	3/8	0.58	<b>PCFF63G</b>	420	420
3/4	19	<b>G 1/2</b>	13	35	21	19.0	55	71	23.8	50.8	M10	3/8	0.58	<b>PCFF63G12</b>	420	420
1	25	<b>G 1</b>	25	42	25	24.0	65	81	27.8	57.2	M12	7/16	0.82	<b>PCFF64G</b>	420	420
1	25	<b>G 3/4</b>	19	42	25	22.0	65	81	27.8	57.2	M12	7/16	0.88	<b>PCFF64G34</b>	420	420
1 1/4	32	<b>G 1 1/4</b>	32	45	27	25.0	78	95	31.8	66.6	M14	1/2	1.18	<b>PCFF65G</b>	420	420
1 1/4	32	<b>G 1 1/4</b>	32	45	27	25.0	78	95	31.8	66.6	M12	—	1.18	<b>PCFF65/12G</b>	420	420
1 1/4	32	<b>G 1</b>	25	45	27	24.0	78	95	31.8	66.6	M14	1/2	1.24	<b>PCFF65G1</b>	420	420
1 1/4	32	<b>G 1</b>	25	45	27	24.0	78	95	31.8	66.6	M12	—	1.24	<b>PCFF65/12G1</b>	420	420
1 1/2	38	<b>G 1 1/2</b>	38	50	30	28.0	94	112	36.5	79.3	M16	5/8	1.90	<b>PCFF66G</b>	420	420
1 1/2	38	<b>G 1 1/4</b>	32	50	30	25.0	94	112	36.5	79.3	M16	5/8	2.03	<b>PCFF66G114</b>	420	420
2	51	<b>G 2</b>	50	70	37	33.0	116	135	44.5	96.8	M20	3/4	3.68	<b>PCFF68G</b>	420	420
2	51	<b>G 1 1/2</b>	38	65	37	28.0	114	134	44.5	96.8	M20	3/4	3.86	<b>PCFF68G112</b>	420	420
2 1/2	64	<b>G 2 1/2</b>	63	80	45	32.0	152	180	58.7	123.8	M24	—	6.98	<b>PCFF610G</b>	420	420
3	76	<b>G 3</b>	73	90	55	40.0	178	208	71.4	152.4	M30	—	13.00	<b>PCFF612G</b>	420	420

\* Please add the suffixes below according to the material/surface required.

<sup>1)</sup> Pressure shown = Item deliverable

Order code suffixes				
Material	Suffix surface and material	Example 4 bolt flange with metr. threads	Example 4 bolt flange with UNC threads	Standard sealing material (no additional suffix needed)
Steel, zinc plated, Cr(VI)-free	CF	PCFF32G38CFM	PCFF32G38CFU	NBR
Stainless steel	SS	PCFF32G38SSM	PCFF32G38SSU	VIT

Stainless steel parts may have dimensional deviations. Additional information on request.