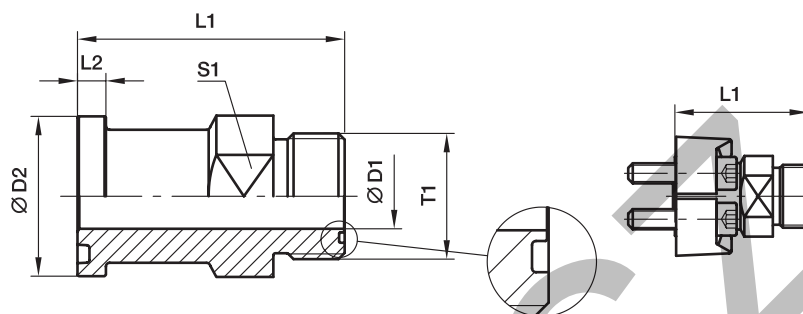



**L(O)HQ SAE Straight flange adapter**

SAE Flange / O-Lok® ORFS end  
(ISO 6162-1/-2)

**3000 PSI Series**

Nom. flange size													
SAE (in.)	ISO (DN)	Tube		T1	D1	D2	L1	L2	S1	Weight (steel) kg/piece	O-ring face without ORFS	O-ring face include ORFS	PN (bar) <sup>1)</sup>
		(metr.)	(in.)								O-ring Order code*	O-ring Order code*	S
3/4	19	18, 20	3/4	<b>1 3/16-12UN</b>	15.5	38.1	70.9	6.7	35.0	0.21	<b>12LHQ1</b>	<b>12LOHQ1</b>	350
1	25	22, 25	7/8, 1	<b>1 7/16-12UN</b>	20.6	44.5	71.4	8.0	41.0	0.30	<b>16LHQ1</b>	<b>16LOHQ1</b>	350
1 1/4	32	28, 30, 32	1 1/4	<b>1 11/16-12UN</b>	26.0	50.8	81.5	8.0	47.5	0.31	<b>20LHQ1</b>	<b>20LOHQ1</b>	280
1 1/2	38	35, 38	1 1/2	<b>2-12UN</b>	32.0	60.3	83.6	8.0	54.0	0.56	<b>24LHQ1</b>	<b>24LOHQ1</b>	210

**6000 PSI Series**

3/4	19	18, 20	3/4	<b>1 3/16-12UN</b>	15.5	41.3	76.7	8.8	35.0	0.21	<b>12LHQ2</b>	<b>12LOHQ2</b>	420
1	25	18, 20	3/4	<b>1 3/16-12UN</b>	15.5	47.6	84.8	9.5	35.0	0.26	<b>12-16LHQ2</b>	<b>12-16LOHQ2</b>	420
1	25	22, 27	3/4, 7/8	<b>1 7/16-12UN</b>	20.6	47.6	85.3	9.5	41.0	0.30	<b>16LHQ2</b>	<b>16LOHQ2</b>	420
1 1/4	32	28, 30, 32	1 1/4	<b>1 11/16-12UN</b>	26.0	54.0	88.4	10.3	47.5	0.31	<b>20LHQ2</b>	<b>20LOHQ2</b>	345
1 1/2	38	35, 38	1 1/2	<b>2-12UN</b>	32.0	63.5	105.2	12.6	54.0	0.56	<b>24LHQ2</b>	<b>24LOHQ2</b>	310

<sup>1)</sup>Pressure shown = Item deliverable

$$\frac{\text{PN (bar)}}{10} = \text{PN (MPa)}$$

See pages N16 and N19 for related flange halves depending on bolt sets.

**Stainless steel parts may have dimensional deviations. Additional information on request.**

\*Please add the **suffixes** below according to the material/surface required.

Order code suffixes				
Material	Suffix surface and material	Example only flange adapter without ORFS O-ring	Example only flange adapter incl. ORFS O-ring	Standard sealing material (no additional suffix needed)
Steel, oiled	S	12LHQ1-S	12LOHQ1-S	NBR