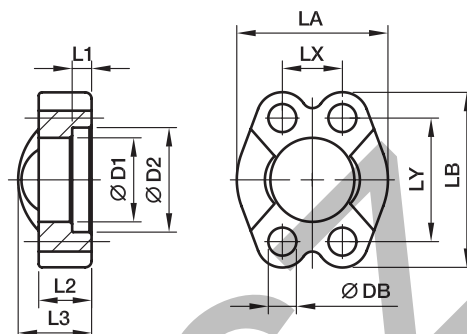


# FUS SAE Full flanges

ISO 6162-1/-2



## 3000 PSI Series

Nom. flange size												Bolts		Weight (steel) kg/piece	Order code*	PN (bar) <sup>1)</sup>	
SAE (in.)	ISO (DN)	D1	D2	L1	L2	L3	LA	LB	LX	LY	DB	(metr.)	(unc.)			CF	SS
1/2	13	24.3	31.0	6.2	13	19	46	54.0	17.5	38.1	8.9	M 08x25	5/16x1 1/4	0.13	<b>FUS32</b>	345	345
3/4	19	32.2	38.9	6.2	14	22	52	65.0	22.3	47.6	10.6	M 10x30	3/8x1 1/4	0.18	<b>FUS33</b>	345	345
1	25	38.5	45.2	7.5	16	24	59	69.9	26.2	52.4	10.6	M 10x30	3/8x1 1/4	0.22	<b>FUS34</b>	345	345
1 1/4	32	43.7	51.6	7.5	16	22	73	79.4	30.2	58.7	10.6	M 10x35	–	0.30	<b>FUS35/10</b>	276	276
1 1/4	32	43.7	51.6	7.5	16	22	73	79.4	30.2	58.7	12.0	–	7/16x1 1/2	0.29	<b>FUS35/12</b>	276	276
1 1/4	32	43.7	51.6	7.5	16	22	73	79.4	30.2	58.7	12.5	M 12x35	–	0.29	<b>FUS35</b>	276	276
1 1/2	38	50.8	61.1	7.5	16	25	83	93.8	35.8	69.9	13.5	M 12x35	1/2x1 1/2	0.45	<b>FUS36</b>	207	207
1 1/2	38	50.8	61.1	7.5	16	25	83	93.8	35.8	69.9	14.5	M 14x35	–	0.44	<b>FUS36/14</b>	207	207
2	51	62.8	72.3	9.0	16	26	97	101.6	42.8	77.8	13.5	M 12x35	1/2x1 1/2	0.53	<b>FUS38/12</b>	207	207
2	51	62.8	72.3	9.0	16	26	97	101.6	42.8	77.8	14.5	M 14x35	–	0.51	<b>FUS38</b>	207	207
2 1/2	64	74.9	84.9	9.0	19	38	109	114.3	50.8	88.9	13.5	M 12x40	1/2x1 3/4	0.85	<b>FUS310</b>	172	172
2 1/2	64	74.9	84.9	9.0	19	38	109	114.3	50.8	88.9	14.5	M 14x40	–	0.82	<b>FUS310/14</b>	172	172
3	76	90.9	102.4	9.0	22	41	131	135.0	61.9	106.4	16.7	M 16x45	5/8x1 3/4	1.30	<b>FUS312</b>	138	138
3 1/2	89	102.4	115.0	10.7	22	28	140	152.4	69.9	120.7	16.7	M 16x45	5/8x2	1.57	<b>FUS314</b>	34	34
4	102	115.1	127.8	10.7	25	35	150	162.0	77.8	130.2	16.7	M 16x50	5/8x2	1.82	<b>FUS316</b>	34	34
5	127	140.5	153.2	10.7	28	41	180	184.2	92.1	152.4	16.7	M 16x50	5/8x2 1/4	2.63	<b>FUS320</b>	34	34

## 6000 PSI Series

1/2	13	24.6	32.5	7.2	16	22	48	56.4	18.2	40.5	8.9	M 08x30	5/16x1 1/4	0.16	<b>FUS62</b>	420	420
3/4	19	32.5	42.0	8.3	19	28	60	71.4	23.8	50.8	10.6	M 10x35	3/8x1 1/2	0.31	<b>FUS63</b>	420	420
1	25	38.8	48.4	9.0	24	33	70	81.0	27.8	57.2	13.3	M 12x45	–	0.49	<b>FUS64</b>	420	420
1	25	38.9	48.4	9.0	24	33	70	81.0	27.8	57.2	12.0	–	7/16x1 3/4	0.51	<b>FUS64/12</b>	420	420
1 1/4	32	44.5	54.8	9.8	27	38	78	95.3	31.8	66.6	15.0	M 14x50	–	0.77	<b>FUS65</b>	420	420
1 1/4	32	44.5	54.8	9.8	27	38	78	95.3	31.8	66.6	13.3	M 12x45	1/2x1 3/4	0.81	<b>FUS65/12</b>	420	420
1 1/2	38	51.6	64.3	12.1	30	43	96	112.8	36.5	79.3	16.7	M 16x55	5/8x2 1/4	1.31	<b>FUS66</b>	420	420
2	51	67.6	80.2	12.1	37	52	114	133.4	44.5	96.8	20.6	M 20x65	3/4x2 3/4	2.00	<b>FUS68</b>	420	420
2 1/2	64	90.0	108.9	20.5	45	45	150	180.0	58.7	123.8	25.0	M 24x75	–	3.95	<b>FUS610</b>	420	420
3	76	115.0	132.5	25.5	55	55	178	215.0	71.4	152.4	31.0	M 30x90	–	6.73	<b>FUS612</b>	420	420

<sup>1)</sup> Pressure shown = Item deliverable

PN (bar) = PN (MPa)  
10

\*Please add the **suffixes** below according to the material/surface required.

Order code suffixes			
Material	Suffix surface and material	Example	Description
Steel, zinc plated, Cr(VI)-free	CF	FUS32CFX	only flange clamp
Stainless steel	SS	FUS32SSX	only flange clamp