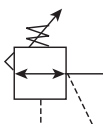


R119 Regulators – Hi-Flow

- High flow performance featuring rugged design for the most demanding applications
- Ideal for those installations calling for constant pressure with wide variation in flow
- Diaphragm operated design with balanced poppet design for quick and accurate regulation
- Secondary aspiration plus balanced poppet provides quick response and accurate pressure regulation
- Heavy duty tee handle adjustment
- Reverse flow version available
- 3/4", 1", 1-1/2" ports (NPT, BSPP)



Operating information

Supply pressure (max):	300 psig (0 to 20.7 bar)
Reduced pressure range:	2 to 125 psig (0.15 to 8.5 bar)
Operating temperature:	40°F to 125°F (4.4°C to 52°C)
Flow capacity†:	
High flow	3/4" 300 scfm (141.6 dm³/s, ANR)
	1" 400 scfm (188.8 dm³/s, ANR)
	1-1/2" 500 scfm (236 dm³/s, ANR)
Gauge ports (2):	1/4 inch
Weight:	
	3/4" 6.2 lb (2.81 kg)
	1" 6.2 lb (2.81 kg)
	1-1/2" 7.2 lb (3.27 kg)

† scfm = Standard cubic feet per minute at 100 psig inlet, 75 psig no flow secondary setting and 20 psig pressure drop.

Port size	Description (0-125 psig reduced pressure)	Part number
3/4"	Without gauge, relieving, NPT	R119-06C
3/4"	With gauge, relieving, NPT	R119-06CG
1"	Without gauge, relieving, NPT	R119-08C
1"	With gauge, relieving, NPT	R119-08CG
1-1/2"	Without gauge, relieving, NPT	R119-12C
1-1/2"	With gauge, relieving, NPT	R119-12CG

Ordering information:

R119	-	06	C		/**
Port Threads NPT - G BSPP G		Port Size 3/4 inch 06 1 inch 08 1-1/2 inch 12		Engineering Level /** Will be entered at Factory	
		Reduced Pressure Range 0-125 psig C 0-250 psig D		Options Blank None G Gauge K Non-relieving X64** Fluorocarbon o-rings and diaphragm X80* Reverse flow X7 Brass Bottom Plug	
				* Reverse flow for use downstream of control valves. ** Brass bottom plug standard with X64 option.	

Most popular.



For inventory, lead times, and kit lookup, visit www.pdnplu.com

H18

Parker Hannifin Corporation
Pneumatic Division
Richland, Michigan
www.parker.com/pneumatics

Material Specifications

Adjusting screw, springs	Steel
Body, spring cage	Zinc
Bottom plug	Nylon
Intervalve	Brass
Seals	Buna N

Repair and Service Kits

2" dial face 60 psig (0 to 4.1 bar), gauge	K4520N14060
2" dial face 160 psig (0 to 11.0 bar), gauge	K4520N14160
2" dial face 300 psig (0 to 20.7 bar), gauge	K4520N14300
1-3/4" digital round face 160 psig (0 to 11.0 bar), gauge	K4517N14160D
Mounting bracket kit	18B57
Non-relieving diaphragm, valve assembly (3/4", 1")	RK118B
Non-relieving diaphragm, valve assembly (1-1/2")	RK118D
Relieving diaphragm, valve assembly (3/4", 1")	RK119B
Relieving diaphragm, valve assembly (1-1/2")	RK119D

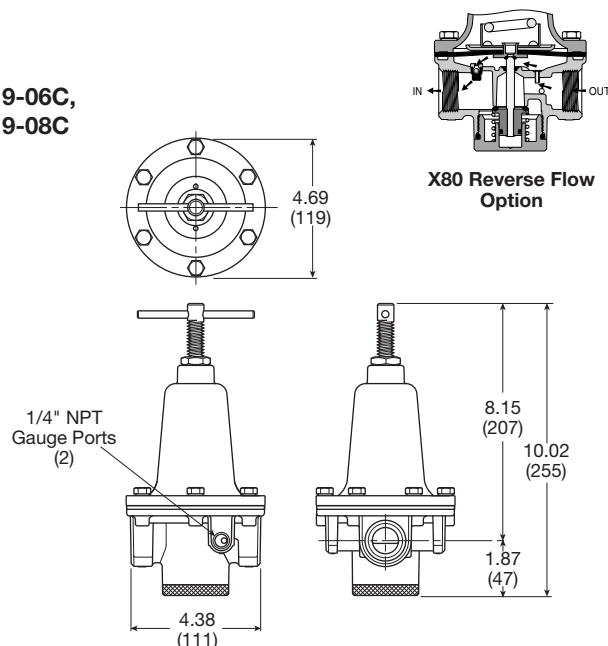
For Fluorocarbon Repair Kits, add X64 to kit number suffix.

**WARNING**

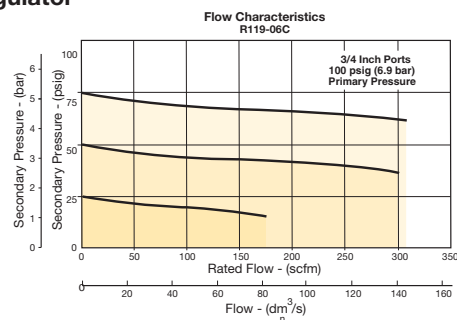
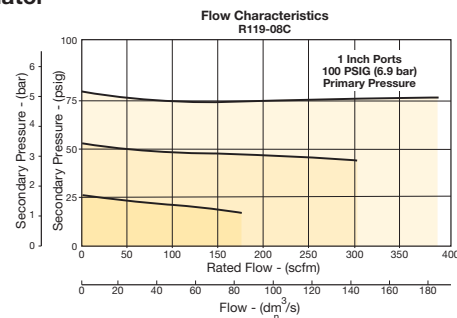
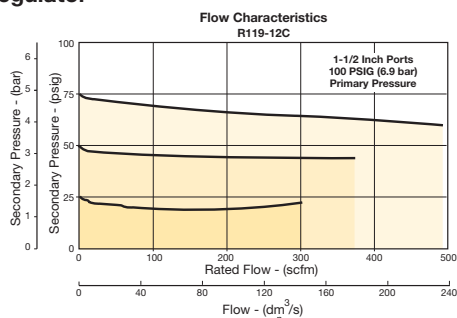
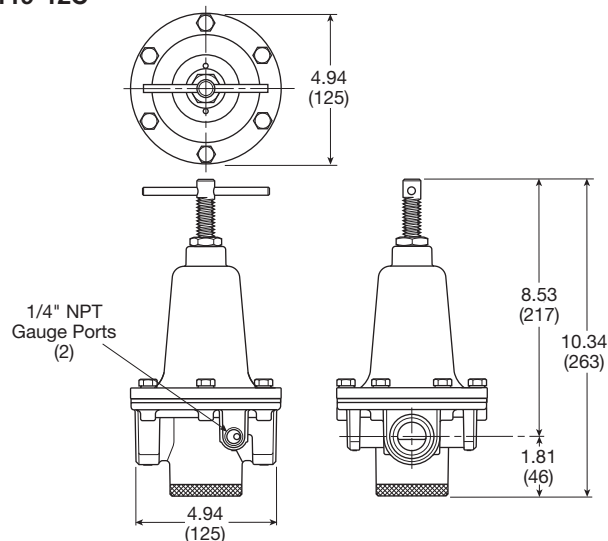
**Product rupture can cause serious injury.
Do not connect regulator to bottled gas.
Do not exceed Maximum primary pressure rating.**

CAUTION:

REGULATOR PRESSURE ADJUSTMENT – The working range of knob adjustment is designed to permit outlet pressures within their full range. Pressure adjustment beyond this range is also possible because the knob is not a limiting device. This is a common characteristic of most industrial regulators, and limiting devices may be obtained only by special design. For best performance, regulated pressure should always be set by increasing the pressure up to the desired setting.

**R119-06C,
R119-08C**

Flow Charts

3/4" Regulator**1" Regulator****1-1/2" Regulator****R119-12C**

Inches (mm)



For inventory, lead time, and kit lookup, visit www.pdnplu.com

H19

Parker Hannifin Corporation
Pneumatic Division
Richland, Michigan
www.parker.com/pneumatics

General Industrial
Products

H

Filters

Coalescers

Regulators

Lubricators

Combinations