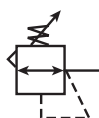


R119 Regulators – Standard

- High flow performance featuring rugged design for the most demanding applications
- Ideal for those installations calling for constant pressure with wide variation in flow
- Diaphragm operated design with balanced poppet design for quick and accurate regulation
- Secondary aspiration plus balanced poppet provides quick response and accurate pressure regulation
- Heavy duty tee handle adjustment
- Reverse flow version available
- Panel mount version available
- 1/4", 3/8", 1/2" ports (NPT, BSPP)



Port size	Description (0-125 psig reduced pressure)	Part number
1/4"	Without gauge, relieving, NPT	R119-02C
1/4"	With gauge, relieving, NPT	R119-02CG
3/8"	Without gauge, relieving, NPT	R119-03C
3/8"	With gauge, relieving, NPT	R119-03CG
1/2"	Without gauge, relieving, NPT	R119-04C
1/2"	With gauge, relieving, NPT	R119-04CG

Operating information

Supply pressure (max):	300 psig (0 to 20.7 bar)
Reduced pressure range:	2 to 125 psig (0.15 to 8.5 bar)
Operating temperature:	40°F to 125°F (4.4°C to 52°C)
Flow capacity†:	
High flow	1/4" 100 scfm (47.2 dm³/s, ANR)
	3/8" 110 scfm (51.9 dm³/s, ANR)
	1/2" 150 scfm (70.8 dm³/s, ANR)
Gauge ports (2):	1/4 inch
Weight:	
	1/4" 1.8 lb (0.82 kg)
	3/8" 1.8 lb (0.82 kg)
	1/2" 3.2 lb (1.45 kg)

† scfm = Standard cubic feet per minute at 100 psig inlet, 75 psig no flow secondary setting and 20 psig pressure drop.

Ordering information:

R119

Port Threads	
NPT	–
G BSPP	G

–

02

Port Size	
1/4 inch	02
3/8 inch	03
1/2 inch	04

C

Reduced Pressure Range	
0-25 psig	A
0-60 psig	B
0-125 psig	C
0-250 psig	D

/**

Engineering Level	
/**	Will be entered at Factory

Options	
Blank	None
G	Gauge
K†	Non-relieving
X64**	Fluorocarbon o-rings and diaphragm
X80*	Reverse flow
X7	Brass bottom plug

* Reverse flow for use downstream of control valves.
** Brass bottom plug standard with X64 option.
† Not available with 250 psig spring.

Most popular.



For inventory, lead times, and kit lookup, visit www.pdnplu.com

H16

Parker Hannifin Corporation
Pneumatic Division
Richland, Michigan
www.parker.com/pneumatics

Material Specifications

Adjusting screw, springs	Steel
Body, spring cage	Zinc
Bottom plug	Nylon
Innervalve	Brass
Seals	Buna N

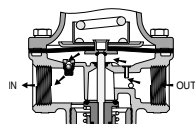
Repair and Service Kits

2" dial face 60 psig (0 to 4.1 bar), gauge	K4520N14060
2" dial face 160 psig (0 to 11.0 bar), gauge	K4520N14160
2" dial face 300 psig (0 to 20.7 bar), gauge	K4520N14300
1-3/4" digital round face 160 psig (0 to 11.0 bar), gauge	K4517N14160D
Mounting bracket, 1/4", 3/8"	SA15Y57
Mounting bracket, 1/2"	18A57
Panel mount conversion kit, 1/4", 3/8"	4202
Panel mount conversion kit, 1/2"	4204
Non-relieving diaphragm, valve assembly (1/4", 3/8"; all psig)	RK118Y
Relieving diaphragm, valve assembly (1/4", 3/8"; all psig)	RK119Y
Non-Relieving diaphragm, valve assembly (1/2"; 25, 60, 125 psig)	RK118A
Relieving diaphragm, valve assembly (1/2"; 25, 60, 125 psig)	RK119A
Relieving diaphragm, valve assembly (1/2"; 250 psig)	RK119A250
Spring cage & T-handle kit (1/4 & 3/8)	RKC119Y
Spring cage & insert only kit (1/2)	SAC18A3/BK

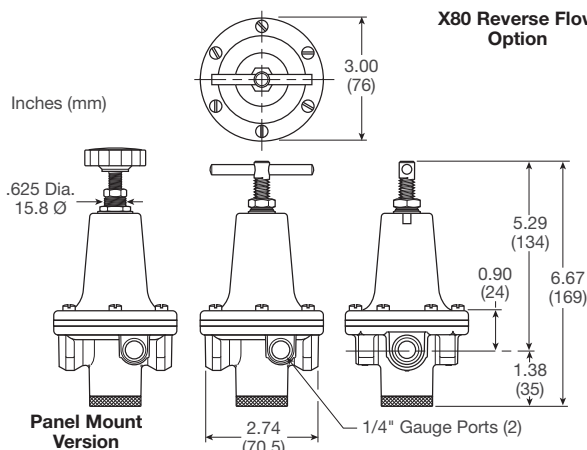
For fluorocarbon repair kits, add X64 to kit number suffix.

CAUTION:

REGULATOR PRESSURE ADJUSTMENT – The working range of knob adjustment is designed to permit outlet pressures within their full range. Pressure adjustment beyond this range is also possible because the knob is not a limiting device. This is a common characteristic of most industrial regulators, and limiting devices may be obtained only by special design. For best performance, regulated pressure should always be set by increasing the pressure up to the desired setting.



X80 Reverse Flow Option

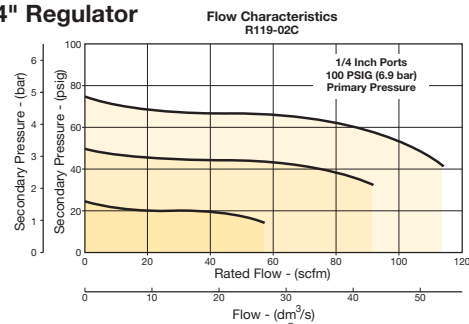


Air Preparation Products

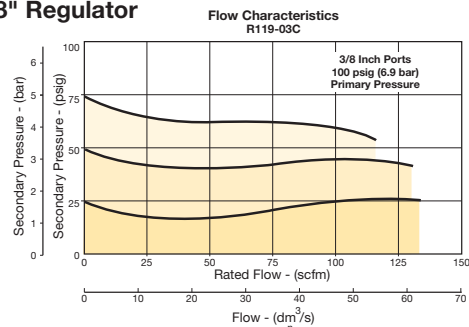
General Industrial

Flow Charts

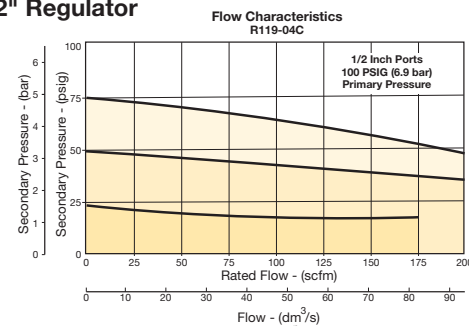
R119 1/4" Regulator



R119 3/8" Regulator



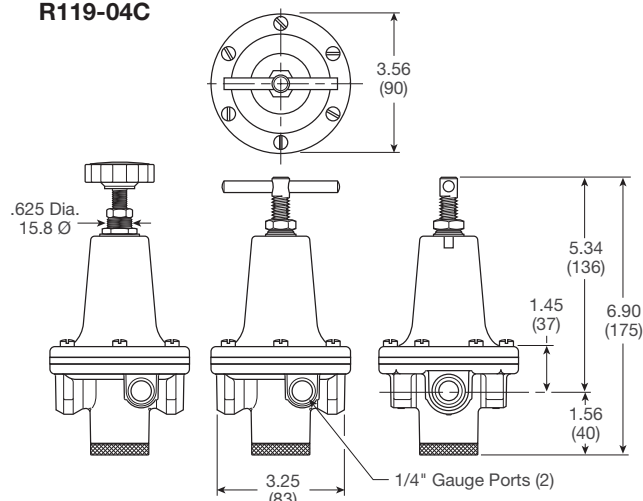
R119 1/2" Regulator



WARNING

**Product rupture can cause serious injury.
Do not connect regulator to bottled gas.
Do not exceed Maximum primary pressure rating.**

R119-04C



For inventory, lead time, and kit lookup, visit www.pdnplu.com