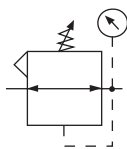
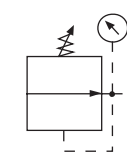


Regulator

R28



Relieving

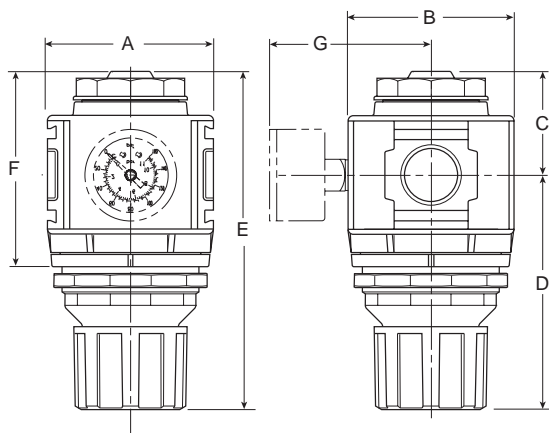


Non-Relieving

**R28-03-F0G0**

Features

- Balanced Valve Design
- Spring-loaded Diaphragm
- 4 Adjusting Pressure Ranges Available
- 3/4" NPT / BSPP-G Over-port
- Reverse-flow Available
- 2 Gauge Ports



NOTE: 2.4" Dia. (61 mm) hole required for panel nut mounting.

Dimensions

Models	Inches (mm)	A	B	C	D	E	F	G
Standard Unit R28-XX-F000		2.90 (73)	2.90 (73)	1.74 (44)	4.16 (105)	5.87 (149)	3.30 (84)	— —
With Gauge R28-XX-F0G0		2.90 (73)	2.90 (73)	1.74 (44)	4.16 (105)	5.87 (149)	3.30 (84)	4.27 (108)

 = "Most Popular"

Specifications

Flow Capacity*	3/8	162 SCFM (76.5 dm ³ /s)
	1/2	170 SCFM (80.2 dm ³ /s)
	3/4	176 SCFM (83.1 dm ³ /s)
Adjusting Range Pressure		0 to 30 PSIG (0 to 2.1 bar)
		0 to 60 PSIG (0 to 4.1 bar)
		0 to 125 PSIG (0 to 8.6 bar)
		0 to 250 PSIG (0 to 17.2 bar)

Gauge Port (2 ea.)	NPT / BSPP-G	1/4
Maximum Supply Pressure		300 PSIG (20.7 bar)
Operating Temperature		32° to 150°F (0° to 65.5°C)
Port Size	NPT / BSPP-G	3/8, 1/2, 3/4
Weight	lb. (kg)	1.7 (0.77)

* Inlet pressure 100 PSIG (6.9 bar). Secondary pressure 90 PSIG (6.2 bar).

Materials of Construction

Adjustment Knob	Acetal
Body	Zinc
Body Cap	ABS
Bonnet	33% Glass-filled Nylon
Diaphragm Assembly	
Nitrile / Zinc	
Panel Nut	Acetal
Seals	Nitrile
Springs	Main Regulating Valve Steel Stainless Steel
Valve Assembly	Brass / Nitrile / Acetal

⚠ WARNING

**Product rupture can cause serious injury.
Do not connect regulator to bottled gas.
Do not exceed maximum primary pressure rating.**

CAUTION:

REGULATOR PRESSURE ADJUSTMENT – The working range of knob adjustment is designed to permit outlet pressures within their full range. Pressure adjustment beyond this range is also possible because the knob is not a limiting device. This is a common characteristic of most industrial regulators, and limiting devices may be obtained only by special design.

For best performance, regulated pressure should always be set by increasing the pressure up to the desired setting.

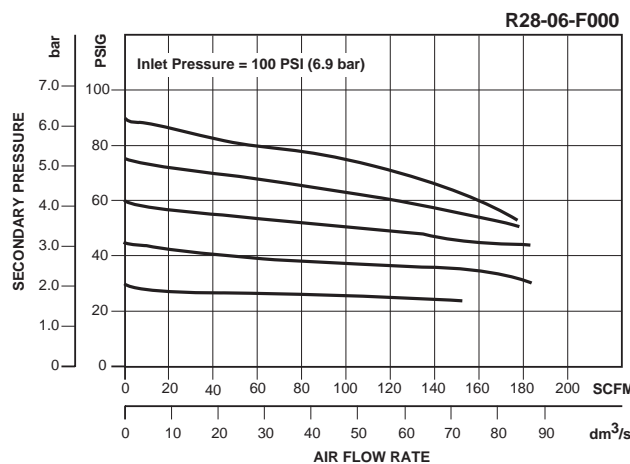
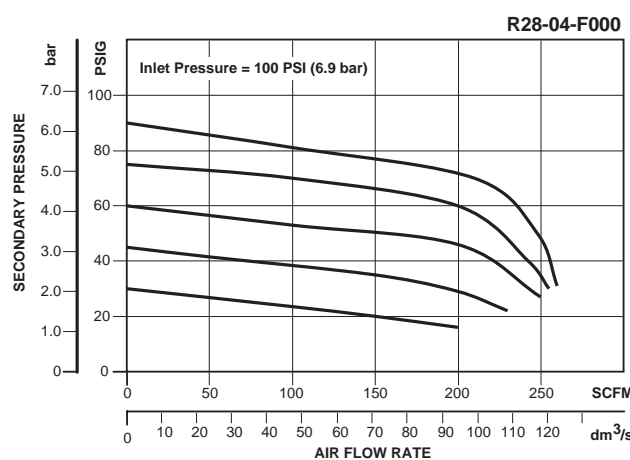
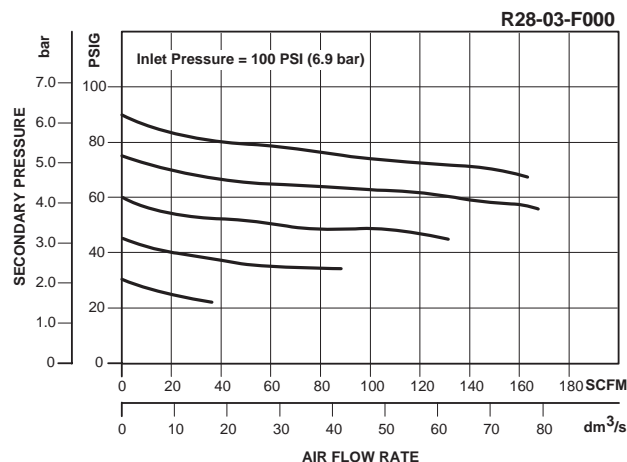
 = "Most Popular"

Replacement Kits

Diaphragm Assembly –	
Non-relieving	RRP-96-987
Relieving	RRP-96-986
Valve Assembly	RRP-96-049
Adjusting Knob	RRP-16-341-000
Spring, Regulating	
0 to 30 PSIG (0 to 2.1 bar)	RRP-96-163
0 to 60 PSIG (0 to 4.1 bar)	RRP-96-164
0 to 125 PSIG (0 to 8.6 bar)	RRP-96-165
0 to 250 PSIG (0 to 17.2 bar)	RRP-96-166

Accessories

Panel Mount Nut –	
Aluminum	RRP-96-674
Plastic	RRP-96-676
Pressure Gauge –	
0-30 PSIG, 1-1/2" Dial Face, 1/4 NPT CBM	K4515N14030
0-60 PSIG, 1-1/2" Dial Face, 1/4 NPT CBM	K4515N14060
0-160 PSIG, 1-1/2" Dial Face, 1/4 NPT CBM	K4515N14160
0-300 PSIG, 1-1/2" Dial Face, 1/4 NPT CBM ..	K4515N14300
0-2,0 bar, 1-1/2" Dial Face, G 1/4 CBM	K4515G14030
0-4,1 bar, 1-1/2" Dial Face, G 1/4 CBM	K4515G14060
0-11 bar, 1-1/2" Dial Face, G 1/4 CBM	K4515G14160
0-21 bar, 1-1/2" Dial Face, G 1/4 CBM	K4515G14290
Tamper Resistant Kit	RRP-96-672
Wall Mounting Bracket	
L-Type	GPA-96-607
T-Type	GPA-96-602



Ordering Information

Model Type	Port Size	With Gauge 5 to 125 PSIG (0.4 to 8.6 bar)	With Gauge 10 to 250 PSIG (0.7 to 17.2 bar)	With Gauge 3 to 60 PSIG (0.2 to 4.1 bar)	Without Gauge 5 to 125 PSIG (0.4 to 8.6 bar)	Without Gauge 10 to 250 PSIG (0.7 to 17.2 bar)	Without Gauge 3 to 60 PSIG (0.2 to 4.1 bar)
Relieving	3/8	R28-03-F0G0	R28-03-G0G0	R28-03-D0G0	R28-03-F000	R28-03-G000	R28-03-D000
	1/2	R28-04-F0G0	R28-04-G0G0	R28-04-D0G0	R28-04-F000	R28-04-G000	R28-04-D000
	3/4	R28-06-F0G0	R28-06-G0G0	R28-06-D0G0	R28-06-F000	R28-06-G000	R28-06-D000
Non-relieving	3/8	R28-03-R0G0	R28-03-S0G0	R28-03-W0G0	R28-03-R000	R28-03-S000	R28-03-W000
	1/2	R28-04-R0G0	R28-04-S0G0	R28-04-W0G0	R28-04-R000	R28-04-S000	R28-04-W000
	3/4	R28-06-R0G0	R28-06-S0G0	R28-06-W0G0	R28-06-R000	R28-06-S000	R28-06-W000

Options - To order an option supplied with the unit model, add the appropriate coded suffix letter in the designated position of the model number.

Regulator Numbering System

= "Most Popular"

Unit Function

R

Unit Function

R Regulator

Family

18

Family

08 Miniature
18 Compact
28 Standard
39 Jumbo

Thread Type

0

Thread Type

0 NPT
C BSPP³

Pipe Size

3

Code	Pipe Size	08	18	28	39
1	1/8"	X			
2	1/4"	X	X		
3	3/8"		X	X	
4	1/2"		X	X	
6	3/4"			X	X
8	1"				X

Diaphragm Function

F

Diaphragm Function ⁵	Fluorocarbon ¹	0 to 30 PSIG ¹ (0 to 2.1 bar)	0 to 60 PSIG ¹ (0 to 4.1 bar)	0 to 125 PSIG (0 to 8.6 bar)	0 to 200 PSIG ^{1,6} (0 to 13.7 bar)	0 to 250 PSIG ^{1,6} (0 to 17.2 bar)
Relieving	No	C	D	F	H	G
	Yes	J	K	L	N	M
Non-relieving	No	P	W	R	T	S
	Yes	V	X	Y	U	Z

Options

0

Options

0 None

Options

G

Options

0 None
C Tamper Resistant
Regulator Adj^{1,2}
G Pressure Gauge⁴
P Metal Panel Nut
(08, 18 & 28 Only)
R Reverse Flow
(08, 18 & 28 Only)

Options

0

B

¹ Not Available on 39 Series.

² Tamper kit not installed. Kit is shipped loose in carton, for 08, 18 & 28 NPT units.

³ ISO, R228 (G Series).

⁴ For 08 Series only: "G" in position 8 or 9 is for unit with flush mounted pressure gauge. Units without gauge have 1/8" threaded gauge ports, and a center back mounted pressure gauge must be ordered separately.

⁵ 39 Series is piston type.

⁶ Not Available on 08 Series.

NOTE: When selecting from the options columns, please enter letters in alphabetical order for positions 7, 8, and 9.

For example:

R 1 8 - 0 3 - F 0 G 0