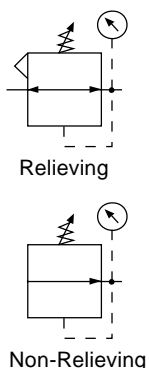


Regulator

R16



R16-02-000

Features

- Non-Rising Adjustment Knob with Friction Lock Knob
- Standard with Two Full Flow 1/4" NPT / BSPT-Rc Gauge Ports
- Panel Mount Nut
- High Flow Capacity
- Balanced Valve Design for Excellent Regulation Characteristics

Specifications

Flow Capacity*	1/4	71.5 SCFM (33.7 dm ³ /s)
	3/8	80.5 SCFM (38.0 dm ³ /s)
	1/2	88.0 SCFM (41.5 dm ³ /s)

Adjusting Range Pressure	0 to 60 PSIG (0 to 4.1 bar)
	0 to 125 PSIG (0 to 8.6 bar)
	0 to 250 PSIG (0 to 17.2 bar)

Maximum Supply Pressure	300 PSIG (20.7 bar)
-------------------------	---------------------

Operating Temperature	32° to 150°F (0° to 65.5°C)
-----------------------	-----------------------------

Port Size	NPT / BSPP-G	1/4, 3/8, 1/2
-----------	--------------	---------------

Gauge Port (2 ea.)	NPT / BSPT-Rc	1/4
--------------------	---------------	-----

Weight	lb. (kg)	1.7 (0.77)
--------	----------	------------

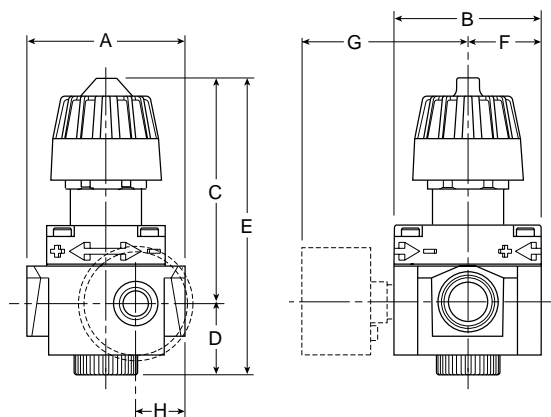
* Inlet pressure 100 PSIG (6.9 bar). Secondary pressure 90 PSIG (6.2 bar).

Materials of Construction

Body	Zinc
Bonnet	PBT
Diaphragm	Nitrile / Zinc
Panel Nut	Acetal
Seals	Nitrile
Springs	Steel
Valve Assembly	Brass / Nitrile / Acetal

WARNING

**Product rupture can cause serious injury.
Do not connect regulator to bottled gas.
Do not exceed maximum primary pressure rating.**



NOTE: 1.31" Dia. (33.3 mm) hole required for panel nut mounting.

Dimensions

Models	Inches (mm)	A	B	C	D	E	F	G	H
Standard Unit R16-XX-000		2.99 (76)	2.59 (66)	3.99 (101.3)	1.20 (30.5)	5.19 (132)	1.29 (33)	— —	1.02 (25.9)
With Gauge R16-XX-G00		2.99 (76)	2.59 (66)	3.99 (101.3)	1.20 (30.5)	5.19 (132)	1.29 (33)	2.80 (71)	1.02 (25.9)

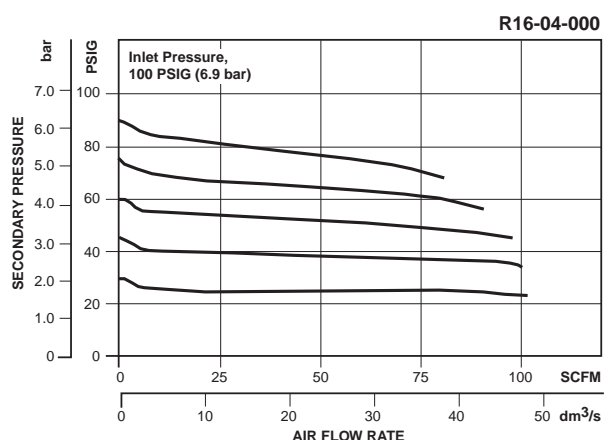
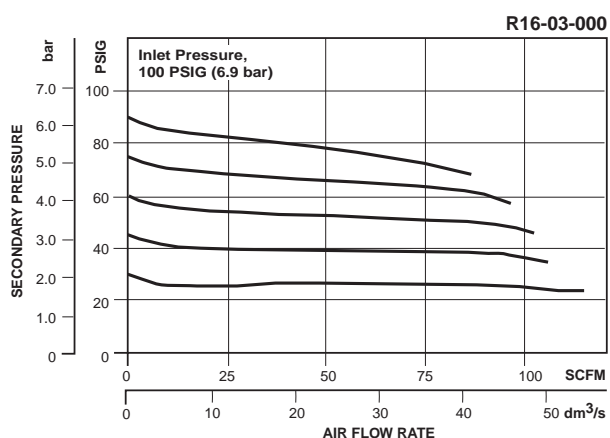
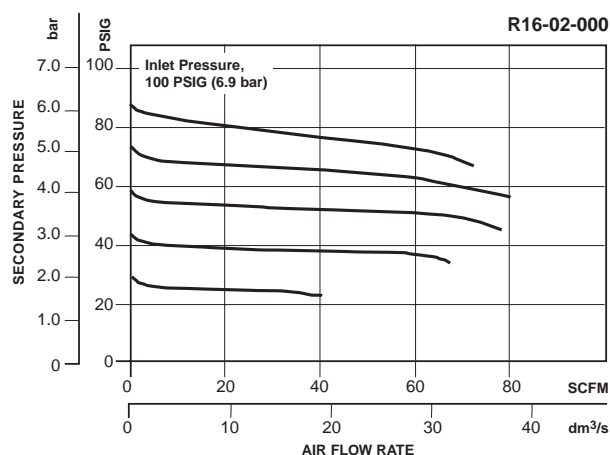
 = "Most Popular"

Replacement Kits

Adjusting Knob	RRP-95-023
Diaphragm Assembly –	
Non-relieving	RRP-96-216
Self-relieving	RRP-96-213
Spring, Regulating –	
0 to 50 PSIG (0 to 3.4 bar)	RRP-95-222
0 to 125 PSIG (0 to 8.6 bar)	RRP-95-224
0 to 250 PSIG (0 to 17.2 bar)	RRP-95-218
Valve Assembly –	
Valve, Valve Spring, Bottom Plug O-ring	RRP-96-215

Accessories

Gauge, Pressure –	
0 to 60 PSIG (0 to 4 bar), 2" Dial Face, 1/4 NPT, CBM	K4520N14060
0 to 160 PSIG (0 to 11 bar), 2" Dial Face, 1/4 NPT, CBM	K4520N14160
0 to 300 PSIG (0 to 20 bar), 2" Dial Face, 1/4 NPT, CBM	K4520N14300
Panel Mount Nut, Plastic	GPA-95-032
Tamper Resistant Kit, Ring Style	RPA-95-006
Wall Mounting Bracket, Gauge Port Adapter, 1/4 NPT	RRP-95-590
Wall Mounting Bracket –	
L-Type, Heavy Duty	RPA-95-090
L-Type, Standard	GPA-95-012
L-Type with Plastic Panel Mount Nut	GPA-95-011



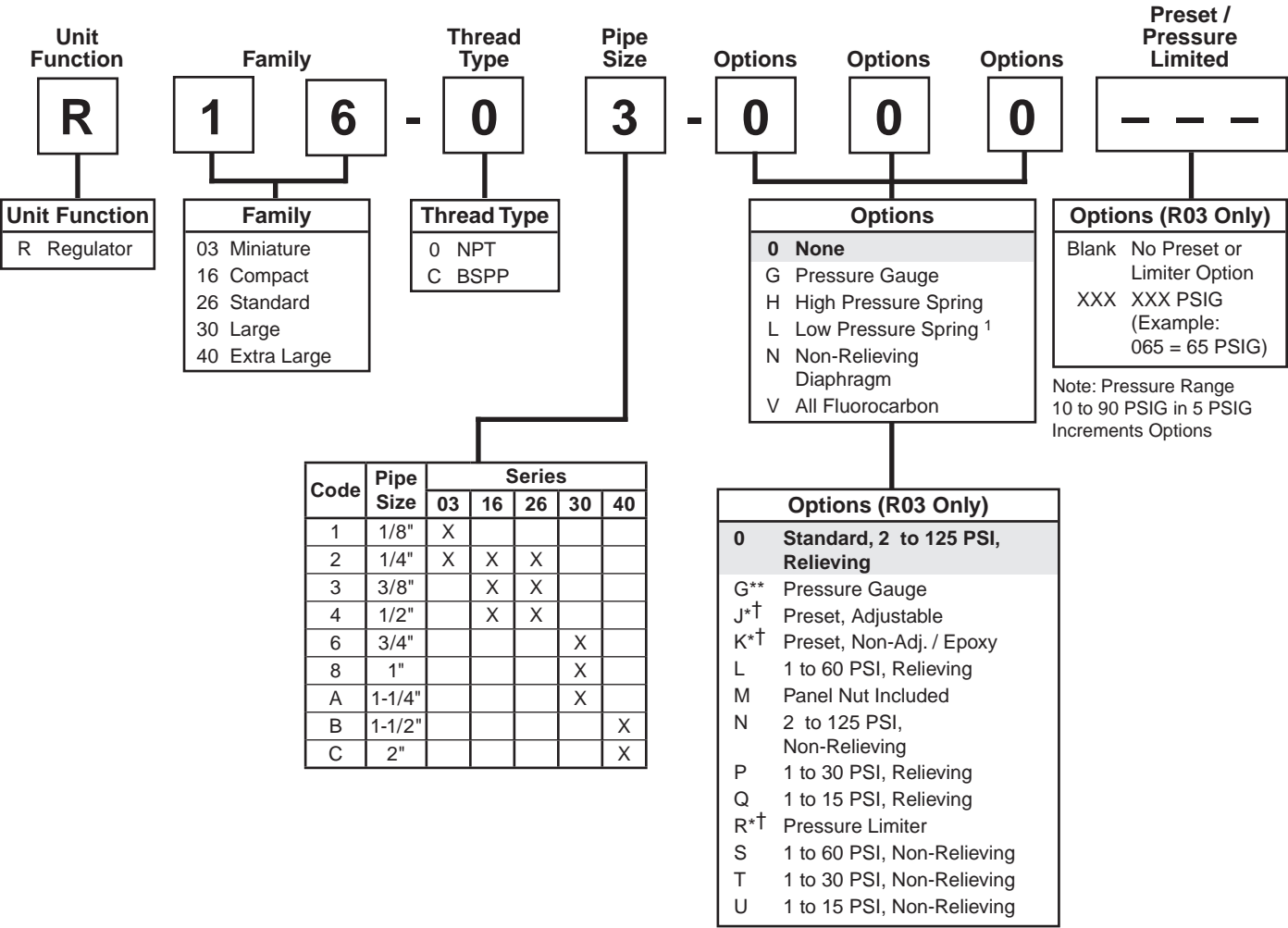
Ordering Information

Model Type	Port Size	Without Gauge 5 to 125 PSIG (0.4 to 8.6 bar)	Without Gauge 10 to 250 PSIG (0.7 to 17.2 bar)	Without Gauge 3 to 60 PSIG (0.2 to 4.1 bar)	With Gauge 5 to 125 PSIG (0.4 to 8.6 bar)	With Gauge 10 to 250 PSIG (0.7 to 17.2 bar)	With Gauge 3 to 60 PSIG (0.2 to 4.1 bar)
Relieving	1/4	R16-02-000	R16-02-H00	R16-02-L00	R16-02-G00	R16-02-GH0	R16-02-GL0
	3/8	R16-03-000	R16-03-H00	R16-03-L00	R16-03-G00	R16-03-GH0	R16-03-GL0
	1/2	R16-04-000	R16-04-H00	R16-04-L00	R16-04-G00	R16-04-GH0	R16-04-GL0
Non-relieving	1/4	R16-02-N00	R16-02-HN0	R16-02-LN0	R16-02-GN0	R16-02-GHN	R16-02-GLN
	3/8	R16-03-N00	R16-03-HN0	R16-03-LN0	R16-03-GN0	R16-03-GHN	R16-03-GLN
	1/2	R16-04-N00	R16-04-HN0	R16-04-LN0	R16-04-GN0	R16-04-GHN	R16-04-GLN

Options - To order an option supplied with the unit model, add the appropriate coded suffix letter in the designated position of the model number.

Regulator Numbering System

= "Most Popular"



¹ Not available on R30.

If more than one option is desired, arrange them in alphabetical order in positions 6, 7, and 8.