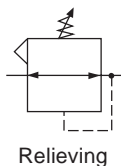


Dial-Air™ Regulator

R21



R21-02-000

Features

- Balanced Valve Design
- Non-Rising Pressure Adjusting Dial
- High-Relief Flow (3/16" Relief Orifice)
- Two 1/4" NPT Gauge Ports, Usually Used for Additional Outlets
- Piston Operated

Specifications

Flow Capacity*	1/4	117 SCFM (55 dm ³ /s)
	3/8	180 SCFM (85 dm ³ /s)
	1/2	195 SCFM (92 dm ³ /s)
	3/4	220 SCFM (103 dm ³ /s)
Adjusting Range Pressure	0 to 40 PSIG (0 to 2.8 bar)	
	0 to 160 PSIG (0 to 11 bar)	
Bleed Rate	0.05 SCFM (0.024 dm ³ /s)	
Gauge Port (2 ea.)	NPT / BSPP-Rc	1/4
Maximum Supply Pressure	300 PSIG (20.7 bar)	
Operating Temperature	32° to 150°F (0° to 65.5°C)	
Port Size	NPT / BSPP-G	1/4, 3/8, 1/2, 3/4
Weight	lb. (kg)	2.3 (1.04)

* Inlet pressure 100 PSIG (6.9 bar). Secondary pressure (1/4, 1/2 & 3/4) 90 PSIG (6.2 bar); (3/8) 80 PSIG (5.5 bar).

Materials of Construction

Body	Zinc
Bonnet	Zinc / Brass
Piston	Acetal
Seals	Nitrile
Springs	Steel
Valve Assembly	Brass / Nitrile / Acetal

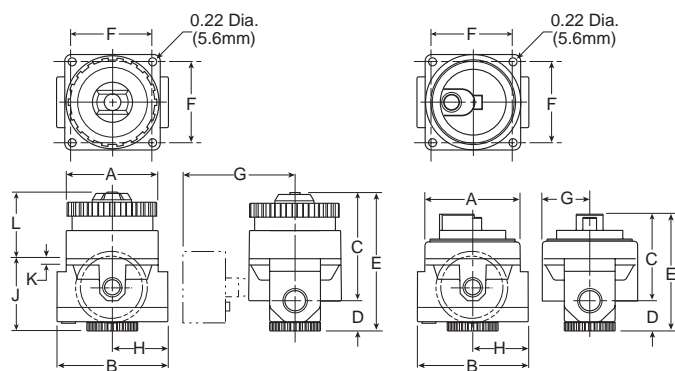
⚠ WARNING

**Product rupture can cause serious injury.
Do not connect regulator to bottled gas.
Do not exceed maximum primary pressure rating.**

CAUTION:

REGULATOR PRESSURE ADJUSTMENT – The working range of knob adjustment is designed to permit outlet pressures within their full range. Pressure adjustment beyond this range is also possible because the knob is not a limiting device. This is a common characteristic of most industrial regulators, and limiting devices may be obtained only by special design.

For best performance, regulated pressure should always be set by increasing the pressure up to the desired setting.



Remote Operated

NOTE: Panel mounting requires (2) 11/16" (69mm) diameter holes and (4) 7/32" (5.5mm) screw holes. Unit can be mounted on material up to 1-1/4" (32mm) thick.

Dimensions

Models	Inches (mm)	A	B	C	D	E	F	G	H	J	K	L
Standard Unit R21-XX-000		2.60 (66)	3.19 (81)	3.14 (79.8)	.95 (24)	4.09 (104)	2.20 (55.9)	— —	1.61 (41)	2.08 (52.8)	.18 (4.6)	2.07 (52.6)
With Gauge (order separately) R21-XX-XXX		2.60 (66)	3.19 (81)	3.14 (79.8)	.95 (24)	4.09 (104)	2.20 (55.9)	2.70 (68.5)	1.61 (41)	2.08 (52.8)	.18 (4.6)	2.07 (52.6)
Remote Operated R21-XX-R00		2.60 (66)	3.19 (81)	2.24 (56.9)	.95 (24)	3.19 (81)	2.20 (55.9)	1.33 (33.8)	1.61 (41)	2.08 (52.8)	.18 (4.6)	1.11 (28.2)

 = "Most Popular"

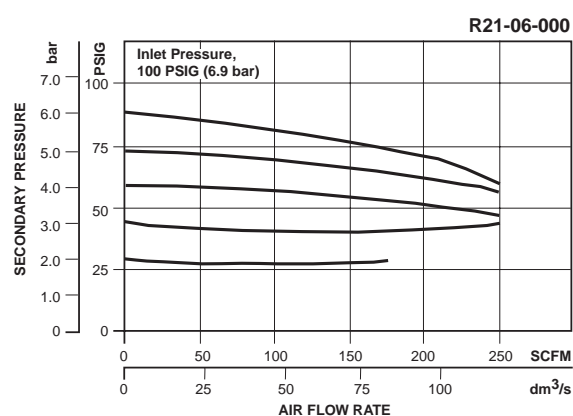
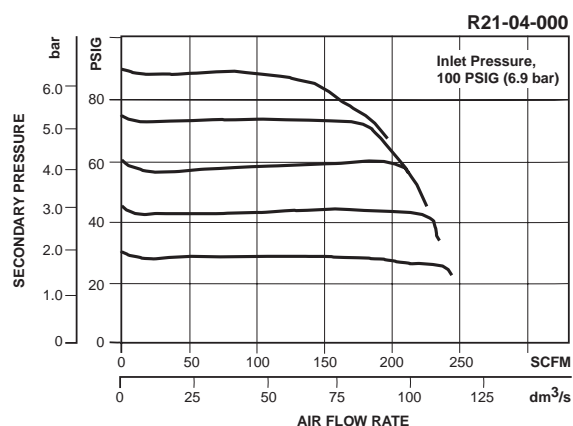
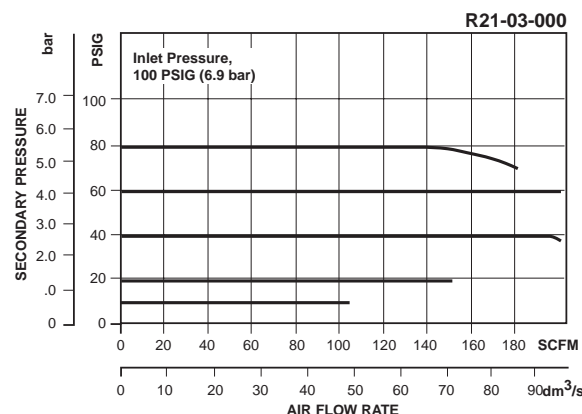
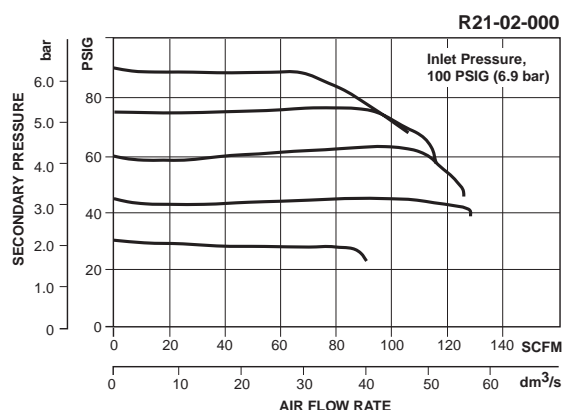
Replacement Kits

Adjustment Dial Knob	RRP-16-024-000
Conversion Kit (Series A to Series B)	RRP-95-766
Cover Kit (Remote) –	
Bonnet and Nitrile, O-ring (Series B)	RRP-95-910
Bonnet and Fluorocarbon, O-ring (Series B)	RRP-95-911
O-ring, Repair Kit	GRP-95-260
Piston, Bottom and O-ring Seal	RRP-95-192
Spring, Regulating, Belleville Washer –	
2 to 40 PSIG (0.1 to 3 bar)	RRP-95-906
5 to 160 PSIG (0.4 to 11 bar)	RRP-95-905
Valve, Main with U-cup Seal	RRP-95-151
Valve, Main with U-cup Seal and Bottom Plug –	
Nitrile Elastomers	RRP-95-914
Fluorocarbon Elastomers	RRP-95-915
Valve, Main (Remote) with U-cup Seal	RRP-96-952

Valve, Main (Remote) with U-cup Seal and Bottom Plug –	
Nitrile Elastomers	RRP-95-912
Fluorocarbon Elastomers	RRP-95-913
Valve, Pilot with O-ring and Valve Spring	RRP-96-934

Accessories

Wall Mounting Bracket, Gauge Port Adapter,	
1/4 NPT	RRP-95-590
Gauge, Pressure –	
0 to 60 PSIG (0 to 4 bar), 2" Dial Face,	
1/4 NPT, CBM	K4520N14060
0 to 160 PSIG (0 to 11 bar), 2" Dial Face,	
1/4 NPT, CBM	K4520N14160
Tamper Resistant Kit	RRP-95-585



Ordering Information

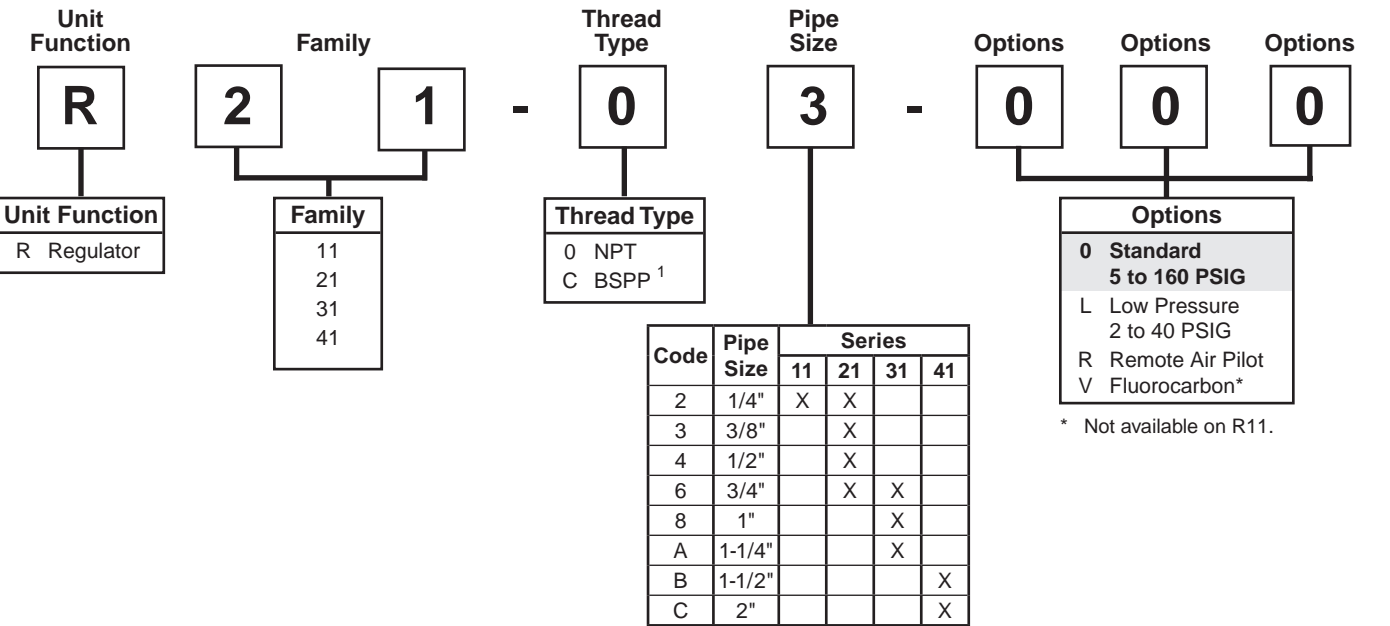
Model Type	Port Size	High Flow 5 to 160 PSIG (0.4 to 11 bar)	Low Pressure 2 to 40 PSIG (0.1 to 3 bar)	Remote 5 to 160 PSIG (0.4 to 11 bar)
Relieving	1/4	R21-02-000	R21-02-L00	R21-02-R00
	3/8	R21-03-000	R21-03-L00	R21-03-R00
	1/2	R21-04-000	R21-04-L00	R21-04-R00
	3/4	R21-06-000	R21-06-L00	R21-06-R00

Options - To order an option supplied with the unit model, add the appropriate coded suffix letter in the designated position of the model number.

Dial-Air™ Regulator

Numbering System

= "Most Popular"



¹ ISO, R228 (G Series)

NOTE: Standard pressure adjustment is plastic "snap lock" knob and plastic bonnet with plastic panel mount nut.

NOTE: When selecting from the options columns, please enter letters in alphabetical order for positions 6, 7, and 8.
For example:

R21 - 0 3 - 0 0 0