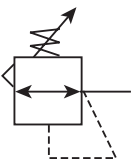


Regulator

R03



R03-02-000

Features

- Unbalanced Poppet Standard
- Solid Control Piston with Lip Seal for Extended Life
- Non-rising Adjusting Knob
- Compact, 3.08 inch (78mm) High by 1.65 inch (42mm) Wide
- Easily Serviced

Specifications

Flow Capacity*	1/8	13 SCFM (6.14 dm ³ /s)
	1/4	15 SCFM (7.08 dm ³ /s)
Gauge Ports (2)		1/8
Port Threads		1/8, 1/4 Inch
Pressure & Temperature Ratings		
0 to 300 PSIG (0 to 20.7 bar)		
32°F to 125°F (0°C to 52°C)		
Secondary Pressure Ranges –		
Standard Pressure		2 to 125 PSIG (0 to 8.6 bar)
Medium Pressure		1 to 60 PSIG (0 to 4.1 bar)
Medium Pressure		1 to 30 PSIG (0 to 2.1 bar)
Low Pressure		1 to 15 PSIG (0 to 1.0 bar)
Weight		.3 lb. (.14 kg)

* Inlet pressure 100 PSIG (6.9 bar). Secondary pressure 90 PSIG (6.2 bar) and 10 PSIG pressure drop.

Materials of Construction

Adjusting Nut	Brass
Adjusting Stem & Spring	Steel
Body	Zinc
Bonnet, Seat, Piston & Valve Poppet	Plastic
Seals	Nitrile

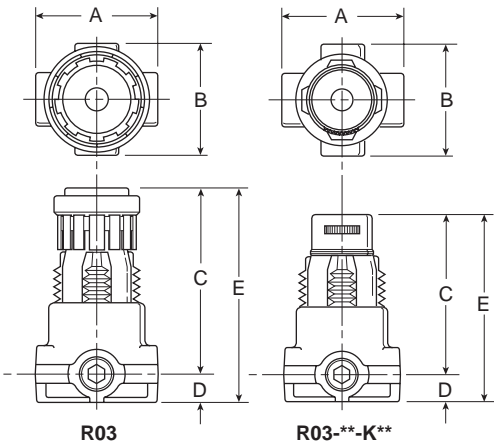
WARNING

Product rupture can cause serious injury.
Do not connect regulator to bottled gas.
Do not exceed maximum primary pressure rating.

CAUTION:

REGULATOR PRESSURE ADJUSTMENT – The working range of knob adjustment is designed to permit outlet pressures within their full range. Pressure adjustment beyond this range is also possible because the knob is not a limiting device. This is a common characteristic of most industrial regulators, and limiting devices may be obtained only by special design.

For best performance, regulated pressure should always be set by increasing the pressure up to the desired setting.



Note: 1.218" dia. (31) mm hole required for panel mounting.

Dimensions

Model	Inches (mm)	A	B	C	D	E
Standard Unit R03-XX-XXX		1.65 (42)	1.56 (39.6)	2.50 (63.5)	.38 (9.6)	2.88 (73)
Preset, Non-Adjustable Unit R03-XX-KXX		1.65 (42)	1.56 (39.6)	2.28 (57.9)	.38 (9.6)	2.66 (67.6)

Replacement Kits

- Poppet / Piston Kits –
- Unbalanced, Non-Relieving

PS428P
- Unbalanced, Relieving

PS426P
- Springs –
- 1-30 PSIG Range

P01175
- 1-60 PSIG Range

P01174
- 2-125 PSIG Range.....

P01173
- 1-15 PSIG Range.....

P01176

Accessories

- Gauges –
- 30 PSIG, 1/8" NPT (0 to 2.1 bar)

K4515N18030
- 60 PSIG, 1/8" NPT (0 to 4.1 bar)

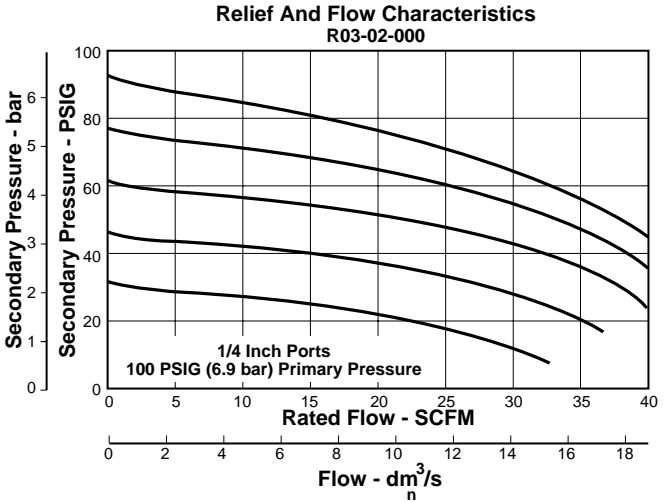
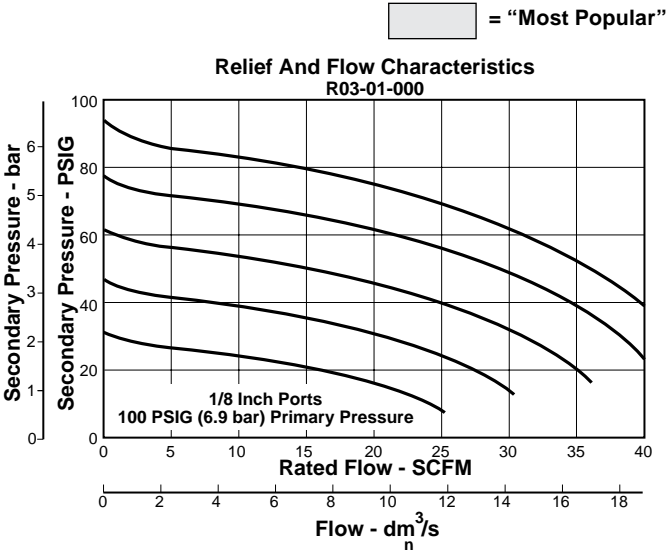
K4515N18060
- 160 PSIG, 1/8" NPT (0 to 11.0 bar).....

K4515N18160
- Mounting Bracket Kit* (Includes Panel Mount Nut).....
- PS417B
- Panel Mount Nuts* –
- Plastic

P78652
- Metal

P01531

*Tighten panel mount nut 2.8 to 3.4 Nm (25 to 30 in-lbs) of torque.

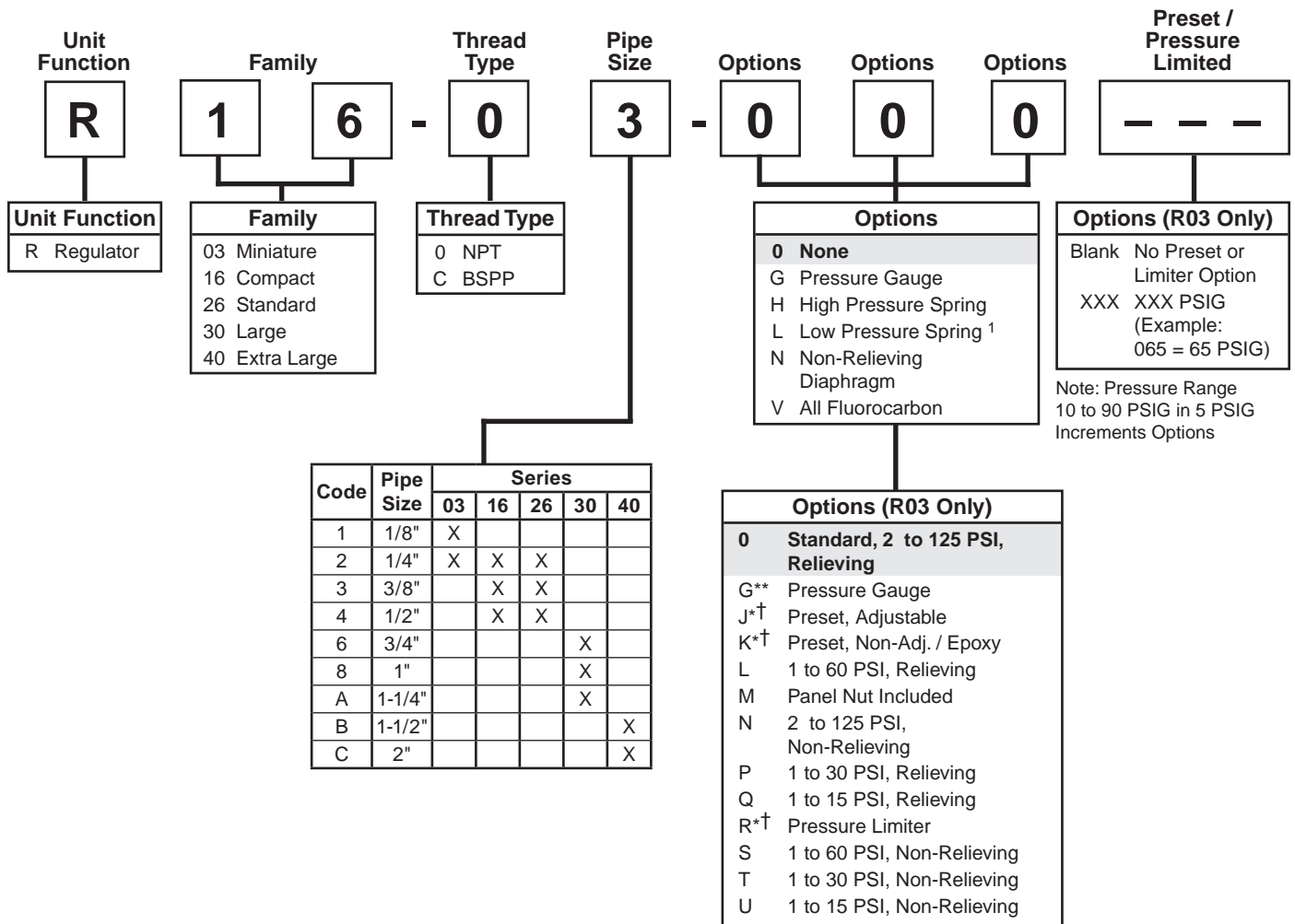


Ordering Information					
Model Type	Port Size	Without Gauge 2 to 125 PSIG (0.2 to 8.6 bar)	Without Gauge 1 to 60 PSIG (0.2 to 4.1 bar)	Without Gauge 1 to 30 PSIG (0.2 to 2.1 bar)	Without Gauge 1 to 15 PSIG (0.2 to 1.0 bar)
Relieving	1/8	R03-01-000	R03-01-L00	R03-01-P00	R03-01-Q00
	1/4	R03-02-000	R03-02-L00	R03-02-P00	R03-02-Q00

Options - To order an option supplied with the unit model, add the appropriate coded suffix letter in the designated position of the model number.

Regulator Numbering System

 = "Most Popular"



B

- * Inlet pressure is 100 PSIG.
For other pressures, consult factory.
- ** Not available with BSPP thread type.
- † Must specify preset or limited pressure.

Spring Type by Preset / Limited Pressure:
For Preset / Limited Pressure 10 to 25
use 30 PSI Spring
For Preset / Limited Pressure 26 to 50
use 60 PSI Spring
For Preset / Limited Pressure 51 to 90
use 125 PSI Spring

¹ Not available on R30.

If more than one option is desired, arrange them in alphabetical order in positions 6, 7, and 8.