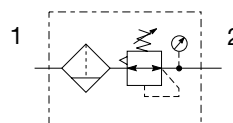


## Standard Filter / Regulator - P33

## Symbols



- Integral 1/2" or 3/4" ports (NPT & BSPP)
- High efficiency 5 micron element as standard
- Excellent water removal efficiency
- Robust but lightweight aluminum construction
- Positive bayonet latch to ensure correct & safe fitting
- Secondary pressure ranges 0-2 bar (0-30 psig), 0-4 bar, (0-60 psig), 0-8 bar (0-125 psig), 0-17 bar (0-250 psig)
- Secondary aspiration plus balanced poppet provides quick response and accurate pressure regulation

## Options:

P33EB				E				N		P
<b>Basic series</b>		<b>Thread type</b>		<b>Element</b>		<b>Relief</b>		<b>Mounting</b>		
Global modular standard filter / regulator		BSPP 1 NPT 9		5μ Element E		B Relieving N Non-relieving		P Plastic panel mount nut		
		<b>Port size</b>				<b>Drain type</b>		<b>Adjustment range</b>		
		1/2 4 3/4 6				M Manual drain A Auto drain		<b>With round gauge</b>		
								Z 2 bar; 30 psig; 0.2 MPa		
								M 4 bar; 60 psig; 0.4 MPa		
								G 8 bar; 125 psig; 0.8 MPa		
								J <sup>§</sup> 17 bar; 250 psig; 1.7 MPa		
								<b>Without gauge</b>		
								Y 2 bar; 30 psig; 0.2 MPa		
								L 4 bar; 60 psig; 0.4 MPa		
								N 8 bar; 125 psig; 0.8 MPa		
								H <sup>§</sup> 17 bar; 250 psig; 1.7 MPa		

**Bowl type**

Poly bowl with bowl guard	G
Metal bowl with sight gauge	S

**Bold items are most common.**

<sup>§</sup> Not available with poly bowl with bowl guard.

Port size	Description	Flow <sup>‡</sup> dm <sup>3</sup> /s (scfm)	Max. bar (psig)	Height mm (inches)	Width mm (inches)	Depth mm (inches)	Part number <sup>†</sup>
1/2"	8 bar (125 psig) relieving - poly bowl - manual drain	99 (210)	10 (150)	291 (11.44)	73 (2.87)	108 (4.27)	<b>P33EA14EGMBNGP</b>
1/2"	8 bar (125 psig) relieving - poly bowl - auto drain	99 (210)	10 (150)	285 (11.22)	73 (2.87)	108 (4.27)	<b>P33EA14EGABNGP</b>
1/2"	8 bar (125 psig) relieving - metal bowl - manual drain	99 (210)	17 (250)	291 (11.44)	73 (2.87)	108 (4.27)	<b>P33EA14ESMBNGP</b>
1/2"	8 bar (125 psig) relieving - metal bowl - auto drain	99 (210)	17 (250)	285 (11.22)	73 (2.87)	108 (4.27)	<b>P33EA14ESABNGP</b>
3/4"	8 bar (125 psig) relieving - poly bowl - manual drain	108 (230)	10 (150)	291 (11.44)	73 (2.87)	108 (4.27)	<b>P33EA16EGMBNGP</b>
3/4"	8 bar (125 psig) relieving - poly bowl - auto drain	108 (230)	10 (150)	285 (11.22)	73 (2.87)	108 (4.27)	<b>P33EA16EGABNGP</b>
3/4"	8 bar (125 psig) relieving - metal bowl - manual drain	108 (230)	17 (250)	291 (11.44)	73 (2.87)	108 (4.27)	<b>P33EA16ESMBNGP</b>
3/4"	8 bar (125 psig) Relieving - Metal bowl - Auto drain	108 (230)	17 (250)	285 (11.22)	73 (2.87)	108 (4.27)	<b>P33EA16ESABNGP</b>

<sup>†</sup> Standard part numbers shown in bold. For other models refer to Options chart above.

<sup>‡</sup> Flow with 10 bar (145 psig) inlet pressure, 6.3 bar (91.3) set pressure and 1 bar (14.5 psig) pressure drop.

## Specifications

Flow capacity*	1/2	99 dm <sup>3</sup> /s (210 scfm)
	3/4	108 dm <sup>3</sup> /s (230 scfm)
Operating temperature	Plastic bowl	-25°C to 52°C (-13°F to 125°F)
	Metal bowl	-25°C to 65.5°C (-13°F to 150°F)
Supply pressure	Plastic bowl	10 bar (150 psig)
	Metal bowl	17 bar (250 psig)
Standard filtration	5 micron	
Useful retention†	85 cm <sup>3</sup> (2.8 US oz.)	
Adjusting range pressure	0-2 bar (30 psig)	
	0-4 bar (60 psig)	
	0-8 bar (125 psig)	
	0-17 bar (250 psig)	
Port size	BSPP / NPT	1/2, 3/4
Gauge port (2 ea.)	BSPP / NPT	1/4
Weight	0.85 kg (1.87 lbs)	

\* Inlet pressure 10 bar (145 psig). Secondary pressure 6.3 bar (91.3 psig).

† Useful retention refers to volume below the quiet zone baffle.

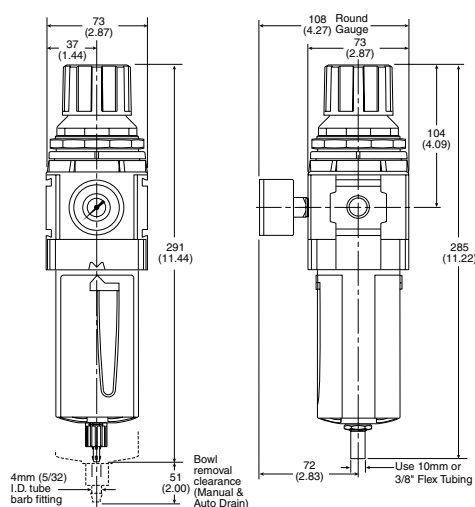
### Air quality:

Within ISO 8573-1: 1991 Class 3 (Particulates); 2001 Class 6 (Particulates)

## Material Specifications

Body	Aluminum	
Adjustment knob	Acetal	
Body cap	ABS	
Element retainer / Baffle	Acetal	
Bowls	Plastic bowl	Polycarbonate
	Metal bowl	Aluminum
Filter element	Sintered Polyethylene	
Seals	Nitrile	
Springs	Main regulating / Valve	Steel / S.S.
Valve assembly	Brass / Nitrile	
Diaphragm assembly	Nitrile / Zinc	
Panel nut	Acetal	
Sight gauge	Metal bowl	Polycarbonate

## Dimensions mm (inches)



Manual Drain

Automatic Drain

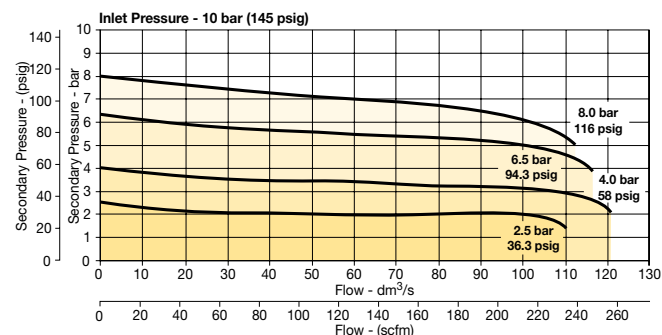


### WARNING

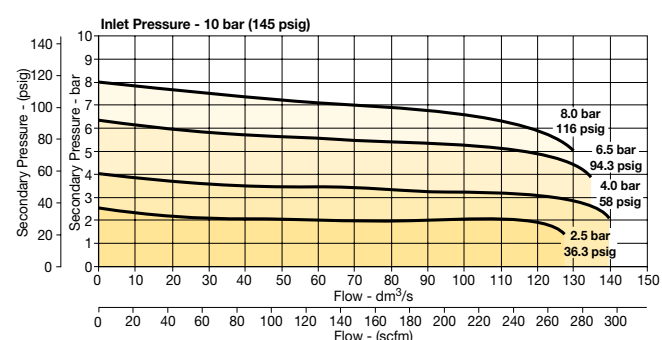
Product rupture can cause serious injury.  
Do not connect regulator to bottled gas.  
Do not exceed Maximum primary pressure rating.

## Flow Charts

### 1/2 Filter / Regulator



### 3/4 Filter/Regulator



## Repair and Service Kits

Plastic bowl / Bowl guard manual drain	<b>P33KA00BGM</b>
Metal bowl / Sight gauge manual drain	<b>P33KA00BSM</b>
Auto drain	<b>P32KA00DA</b>
5μ particle filter element	<b>P33KA00ESE</b>
Panel mount nut - Aluminum	<b>P33KA00MM</b>
Panel mount nut - Plastic	<b>P33KA00MP</b>
Angle bracket (fits to panel mount threads)	<b>P33KA00MR</b>
T-bracket (fits to body connector)	<b>P32KA00MB</b>
T-bracket with body connector	<b>P32KA00MT</b>
Body connector	<b>P32KA00CB</b>

## Gauges

### 50mm (2") Round 1/4" center back mount

0-60 psig / 0-4 bar	<b>P6G-ERB2040</b>
0-160 psig / 0-11 bar	<b>P6G-ERB2110</b>
0-300 psig / 0-20 bar	<b>P6G-ERB2200</b>

For best performance, regulated pressure should always be set by increasing the pressure up to the desired setting.