

PF Series

Non-Spill Chemical Transfer Couplings



Ideal for Closed System Transfer:

Parker PF Series dry disconnect couplings virtually eliminate fluid loss upon disconnection and are designed to help meet the demand for closed system transfer and dispensing of chemicals and fluids with minimal environmental contamination.

These couplers can be used with concentrated or diluted industrial chemicals, fertilizers, herbicides, insecticides, fungicides or pesticides when transferring from bulk storage tanks, returnable containers, applicators, etc.

Applications include:

- Chemical Dispensing Systems
- Spray Application Equipment
- Intermediate Bulk Containers (IBC)
- Water Systems
- Hydrofluoric Acid & Hydrochloric Acid (with Hastelloy-C Spring option)



Contact Information:

Parker Hannifin Corporation
Quick Coupling Division
8145 Lewis Road
Minneapolis, MN 55427

phone 763 544 7781
fax 763 544 3418
qcd_sales@parker.com

solutions.parker.com/nonspill

PF Series Features:

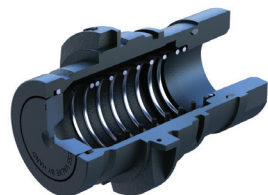
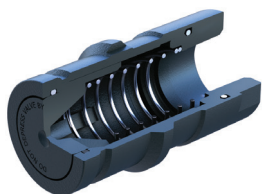
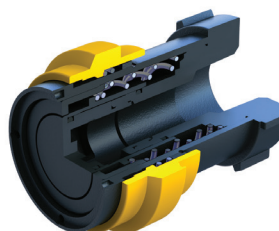
- Available in 1/2", 1" and 2" body sizes
- Push-to-connect design
- Flush-face valves provide minimal spillage
- 1" female coupler has non-wetted springs
- 316 stainless steel springs
- Hastelloy-C springs available
- Fluorocarbon seals
- Alternative seal materials available



ENGINEERING YOUR SUCCESS.

Specifications

| Body Size | 1/2 inch | 1 inch | 2 inch |
|---------------------------------|----------------------|---------------------|---------------------|
| Body | Polypropylene | Polypropylene | Polypropylene |
| Springs | 316 Stainless Steel | 316 Stainless Steel | 316 Stainless Steel |
| Seals | Fluorocarbon | Fluorocarbon | Fluorocarbon |
| Rated Pressure @ 68°F | 100 psi | 60 psi | 100 psi |
| Rated Flow | 12 gpm | 20 gpm | 50 gpm |
| Pressure Drop at Rated Flow | 11.3 psi | 3.4 psi | 4.0 psi |
| Force to Connect | 32 lbs | 41 lbs | 54 lbs |
| Force to Disconnect | 12 lbs | 17 lbs | 17 lbs |
| Operating Temperature | +40°F to +140°F | +40°F to +140°F | +40°F to +140°F |
| Storage Temperature | -20°F to +140°F | -20°F to +140°F | -20°F to +140°F |
| Maximum Spillage per Disconnect | 0.01 cu in (0.14 ml) | 0.06 cu in (1.0 ml) | 0.5 cu in (9.0 ml) |
| Vacuum Rating | 27.4 Hg | Contact QCD | Contact QCD |



Couplers

| Body Size | Part Number | Port Thread* |
|-----------|--------------|--------------|
| 1/2 inch | PF-501-8FP | 1/2" NPT |
| 1 inch | PF-1001-16FP | 1" NPT |
| 2 inch | PF-2001-32FP | 2" NPT |

Nipples

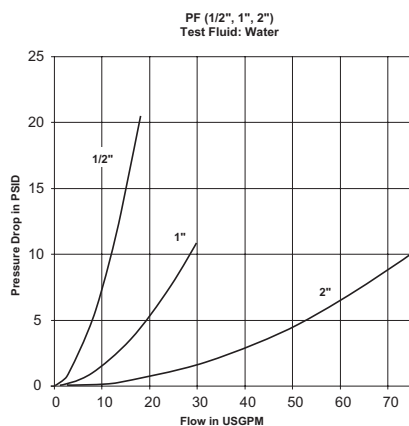
| Body Size | Part Number | Port Thread* |
|-----------|--------------|--------------|
| 1/2 inch | PF-502-8FP | 1/2" NPT |
| 1 inch | PF-1002-16FP | 1" NPT |
| 2 inch | PF-2002-32FP | 2" NPT |

Nipples – Tank Mount

| Body Size | Part Number | Port Thread* | Tank Mount Thread |
|-----------|--------------|--------------|-------------------|
| 1 inch | PF-1002-32MB | 1" NPT | Modified Buttress |
| 1 inch | PF-1002-32MP | 1" NPT | Modified NPS |

*Port thread is female NPT. Contact QCD for other options

Performance



Dust Protection

| Body Size | Coupler Dust Cap Part Number | Nipple Dust Cap Part Number | Material |
|-----------|------------------------------|-----------------------------|--------------------|
| 1/2 inch | FR-501 | FR-502 | Synthetic Rubber |
| 1 inch | None | PFR-1002 | Ethylene Propylene |
| 1 inch | None | PFR-1002-NS* | Ethylene Propylene |

*For use with tank mount nipples

