

# Stainless Steel Non-Return Valves

Stainless steel non-return valves are ideally suited to **harsh environments** and for conveying **many industrial fluids**. These products allow fluids to flow in one direction and prevent them from flowing in the other.

## Product Advantages

Demanding Environments	Robust design
	Suitable for use with many chemicals or in corrosive environments
	Compatible with many fluids
Compact & Versatile	Reduced dimensions
	Smooth external surfaces contribute to equipment cleanliness
	Flow direction symbol protects against incorrect installation
	Hexagonal body to facilitate installation



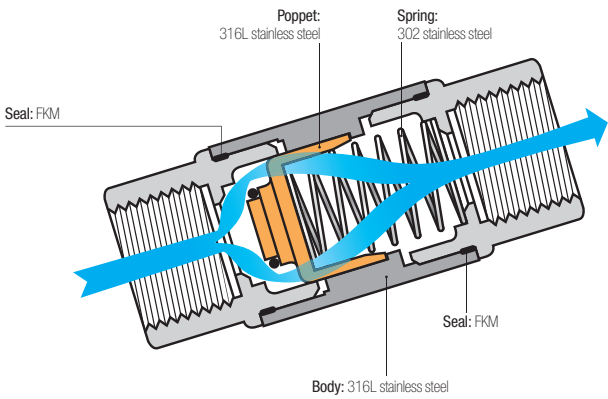
Pneumatics  
Machine Tools  
Food Process  
Printing  
Chemical  
Textile  
Automotive Process

Applications

## Technical Characteristics

Compatible Fluids	Many fluids		
Working Pressure	0.5 to 40 bar		
Working Temperature	-20°C to +180°C		
Flow Characteristics	Threads	NI/min	Kv
	G1/8	18.88	1.60
	G1/4	19.91	1.69
	G3/8	35.54	3.01
	G1/2	36.50	3.10
	G3/4	65.86	5.59
	G1	92.60	7.86
Cracking Pressure	0.25 bar		

### Component Materials



Silicone-free

### Regulations

DI: 2002/95/EC (RoHS)  
RG: 1907/2006 (REACH)  
DI: 97/23/EC (PED)

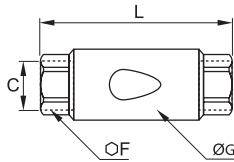
# Stainless Steel Non-Return Valves

4890

Non-Return Valve, Female BSPP Thread



Stainless steel 316L, FKM



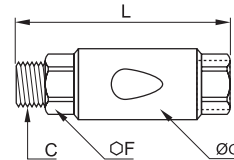
C	DN		F	G	L	Kg
G1/8	10	4890 10 10	17	22	50	0.082
G1/4	10	4890 13 13	17	22	50	0.074
G3/8	15	4890 17 17	22	30	67	0.182
G1/2	15	4890 21 21	24	30	71	0.183
G3/4	20	4890 27 27	32	42	84	0.289
G1	25	4890 34 34	38	42	90	0.420

4891

Non-Return Valve, Supply, Male BSPP Thread/Exhaust, Female BSPP Thread



Stainless steel 316L, FKM



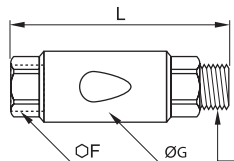
C	DN		F	G	L	Kg
G1/8	10	4891 10 10	17	22	56	0.100
G1/4	10	4891 13 13	17	22	58	0.082
G3/8	15	4891 17 17	22	30	75	0.191
G1/2	15	4891 21 21	24	30	79	0.210
G3/4	20	4891 27 27	32	42	84	0.300
G1	25	4891 34 34	38	42	102	0.519

4892

Non-Return Valve, Supply, Female BSPP Thread/Exhaust, Male BSPP Thread



Stainless steel 316L, FKM



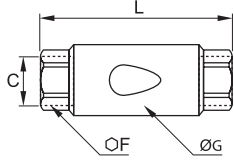
C	DN		F	G	L	Kg
G1/8	10	4892 10 10	17	22	56	0.100
G1/4	10	4892 13 13	17	22	58	0.082
G3/8	15	4892 17 17	22	30	75	0.192
G1/2	15	4892 21 21	24	30	79	0.211
G3/4	20	4892 27 27	32	42	84	0.300
G1	25	4892 34 34	38	42	102	0.519

4895

Non-Return Valve, Female NPT Thread



Stainless steel 316L, FKM



C	DN		F	G	L	Kg
NPT1/8	10	4895 11 11	17	22	50	0.083
NPT1/4	10	4895 14 14	17	22	54	0.079
NPT3/8	15	4895 18 18	22	30	67	0.197
NPT1/2	15	4895 22 22	24	30	77	0.196