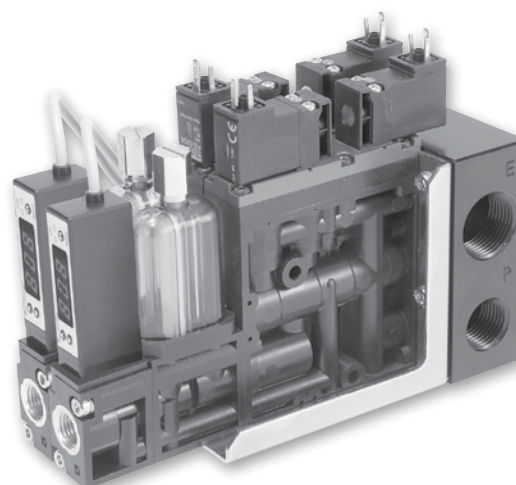
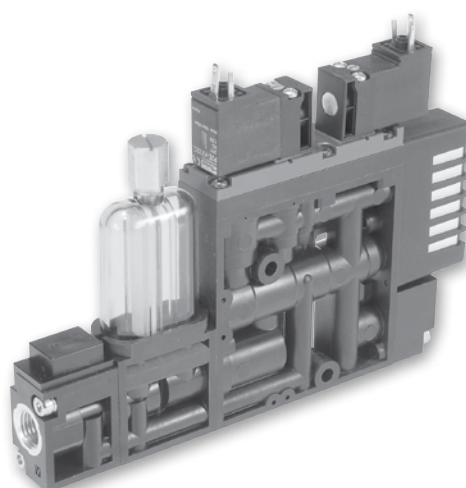


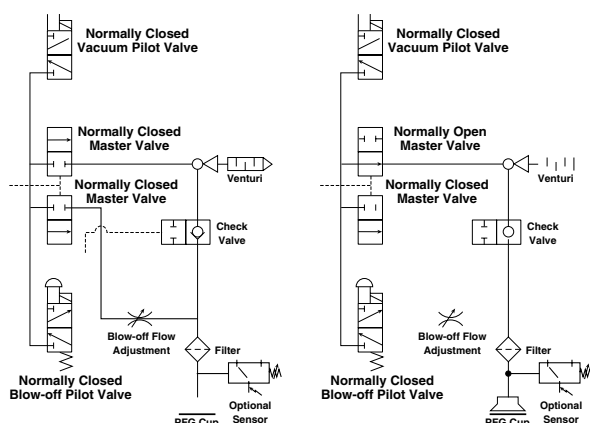
The MC72 Series vacuum generator provides a complete solution for factory automation. The MC72 is perfect for non-porous applications such as material handling, critical applications involving glass, or general transfer applications. The MC72 has integrated vacuum pilot and blow-off release pilot valves to minimize response times. The MC72 has additional features; regulating blow-off needle, 130 micron filter, optional check valve, and a sensor platform for vacuum confirmation. The MC72 can be assembled into a maximum 5 station manifold. The unit can be ordered normally open or normally closed.

Features

- Vacuum generating pilot valve
- Vacuum release pilot valve option
- Vacuum sensor - filter - silencer available
- Regulating blow-off
- Check valve option
- Air-economizing controls
- Manifold system
- Vacuum flow rates from 60 to 155 l/mn
- 3-Pin, EN175301-803, 15mm, 8mm 3-Pin



Add-A-Fold assembly (Silencer included)



Specifications

Media	Non-lubricated compressed air, non-corrosive gases
Optimum operating pressure	4.8 bar (70 PSI)
Humidity	35 to 85%
Pressure port	G: 1/4 BSPP female N: 1/4 NPT female
Vacuum port	G: 1/4 BSPP female N: 1/4 NPT female
Operating temperature	5°C to 50°C
Material	Body (PA and PBT) with other internal components (Brass, Al.NBR, SUS, FKM), filter elements (PVF)
Manual operation	Non-locking manual override
Electrical connection	DIN connector with LED and surge protection
Power supply	24VDC \pm 10%
Power consumption	1.8W
Operating pressure	4.8 bar (70 PSI)
Pilot valve air supply	Normally closed
Generator weight	750g
Manifold weight	2-Station: 680g, 3-Station: 880g, 4-Station: 1080g, 5-Station: 1280g

MC72 unit with integrated check valve, normally closed vacuum valve

Port size			Max. vacuum flow l/mn	Max. degree of vacuum inHg	Sensor option	Part number	
Pressure	Vacuum	Exhaust				BSP	NPT
1/4	3/8	Muffler	62	24	No sensor	MC72S15HSZSC4BPG	MC72S15HSZSC4BPN
1/4	3/8	Muffler	62	24	MPS-V23C-PC, PNP	MC72S15HS42C4BPG	MC72S15HS42C4BPN
1/4	3/8	Muffler	62	24	MVS-201-PCP, PNP	MC72S15HS06C4BPG	MC72S15HS06C4BPN
1/4	3/8	Muffler	62	24	MPS-V23C-NC, NPN	MC72S15HS41C4BPG	MC72S15HS41C4BPN
1/4	3/8	Muffler	62	24	MVS-201-NC, NPN	MC72S15HS01C4BPG	MC72S15HS01C4BPN
1/4	3/8	Muffler	104	24	No sensor	MC72S20HSZSC4BPG	MC72S20HSZSC4BPN
1/4	3/8	Muffler	104	24	MPS-V23C-PC, PNP	MC72S20HS42C4BPG	MC72S20HS42C4BPN
1/4	3/8	Muffler	104	24	MVS-201-PCP, PNP	MC72S20HS06C4BPG	MC72S20HS06C4BPN
1/4	3/8	Muffler	104	24	MPS-V23C-NC, NPN	MC72S20HS41C4BPG	MC72S20HS41C4BPN
1/4	3/8	Muffler	104	24	MVS-201-NC, NPN	MC72S20HS01C4BPG	MC72S20HS01C4BPN
1/4	3/8	Muffler	147	24	No sensor	MC72S25HSZSC4BPG	MC72S25HSZSC4BPN
1/4	3/8	Muffler	147	24	MPS-V23C-PC, PNP	MC72S25HS42C4BPG	MC72S25HS42C4BPN
1/4	3/8	Muffler	147	24	MVS-201-PCP, PNP	MC72S25HS06C4BPG	MC72S25HS06C4BPN
1/4	3/8	Muffler	147	24	MPS-V23C-NC, NPN	MC72S25HS41C4BPG	MC72S25HS41C4BPN
1/4	3/8	Muffler	147	24	MVS-201-NC, NPN	MC72S25HS01C4BPG	MC72S25HS01C4BPN

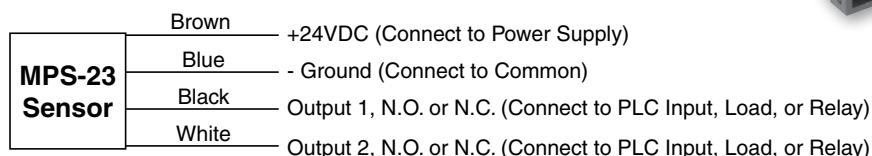
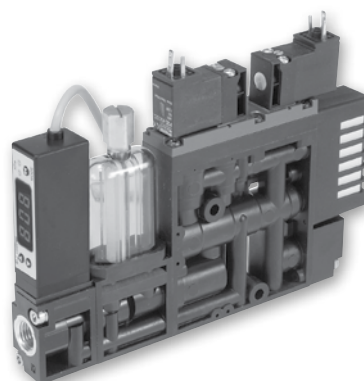
MC72 unit with integrated check valve, normally open vacuum valve

Port size			Max. vacuum flow l/mn	Max. degree of vacuum inHg	Sensor option	Part number	
Pressure	Vacuum	Exhaust				BSP	NPT
1/4	3/8	Muffler	62	24	No sensor	MC72S15HSZSC4APG	MC72S15HSZSC4APN
1/4	3/8	Muffler	62	24	MPS-V23C-PC, PNP	MC72S15HS42C4APG	MC72S15HS42C4APN
1/4	3/8	Muffler	62	24	MPS-V23C-NC, NPN	MC72S15HS41C4APG	MC72S15HS41C4APN
1/4	3/8	Muffler	104	24	No sensor	MC72S20HSZSC4APG	MC72S20HSZSC4APN
1/4	3/8	Muffler	104	24	MPS-V23C-PC, PNP	MC72S20HS42C4APG	MC72S20HS42C4APN
1/4	3/8	Muffler	104	24	MPS-V23C-NC, NPN	MC72S20HS41C4APG	MC72S20HS41C4APN
1/4	3/8	Muffler	147	24	No sensor	MC72S25HSZSC4APG	MC72S25HSZSC4APN
1/4	3/8	Muffler	147	24	MPS-V23C-PC, PNP	MC72S25HS42C4APG	MC72S25HS42C4APN
1/4	3/8	Muffler	147	24	MPS-V23C-NC, NPN	MC72S25HS41C4APG	MC72S25HS41C4APN

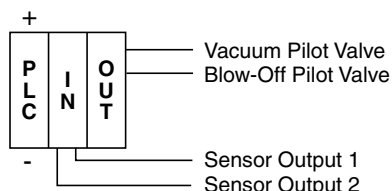
MC72 with MPS-23 series

The "V23" sensor has 2 independent NPN or PNP outputs available for vacuum confirmation. The output response time of this sensor is less than 2 msec.

The "V23" sensor is available with an M8, 4-Pin or grommated (2M) electrical connector. The mating M8, 4-Pin cable is not included with the MPS-23 Sensor and must be ordered separately.

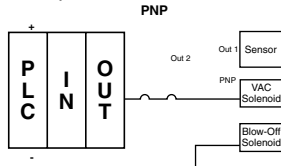


Basic System



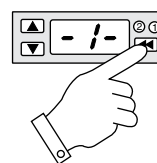
Air-Economizing System

N.C. Output 1 - Air Economizing
N.O. Output 2 - Part Present Output

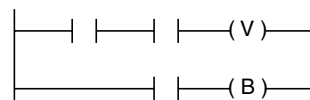


Output Adjustment

Sensor functions and outputs are programmed by touch panel.



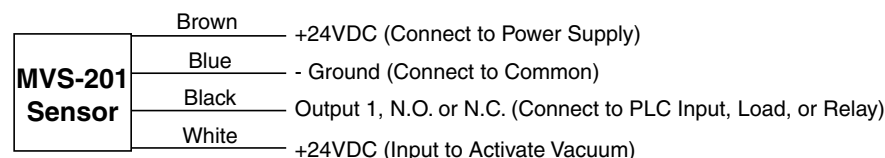
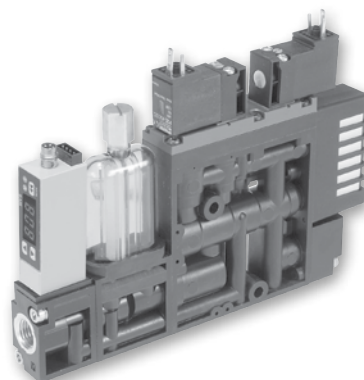
Vacuum System Programming



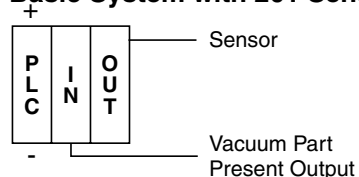
MC72 with MVS-201 series

The "201" sensor has one output NPN or PNP for vacuum confirmation and a control output that interfaces directly with the blow-off release pilot valve. With programmable time control features and a special chip driver, the sensor automatically activates the blow-off release when the NPN or PNP input vacuum signal from the PLC is discontinued. This eliminates a PLC output to activate the blow-off release. This new technology reduces PLC output requirements by 50% and reduces installation to a simple 4 wire system. The output response of the sensor is less than 2 msec.

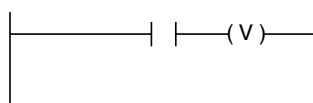
The "201" sensor is available with an M8, 4-Pin electrical connector. The CVK-D201G valve cable is included with the MVS-201 Sensor Option. The mating M8, 4-Pin cable must be ordered separately.



Basic System with 201 Sensor

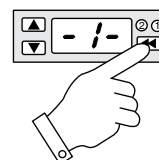


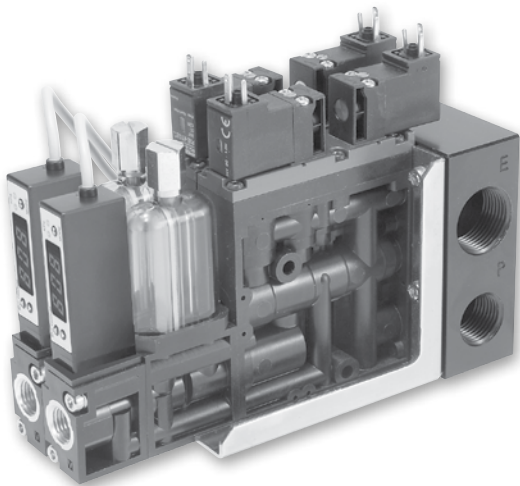
Vacuum System Programming



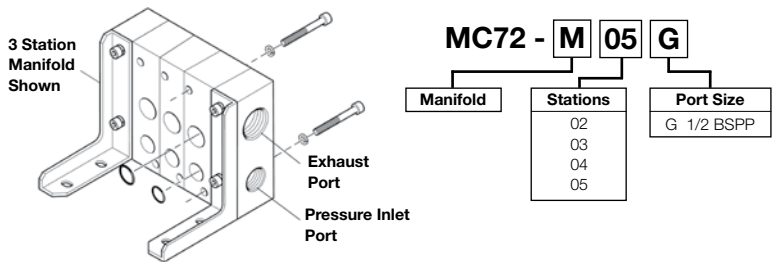
Output Adjustment

Sensor functions and outputs are programmed by touch panel.



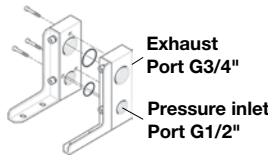
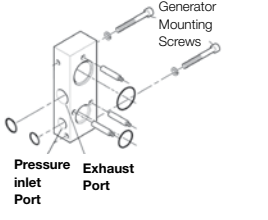


Manifold part number (without MC72 vacuum generator)



Note) for complete Manifold including MC72 vacuum generators, please contact us.

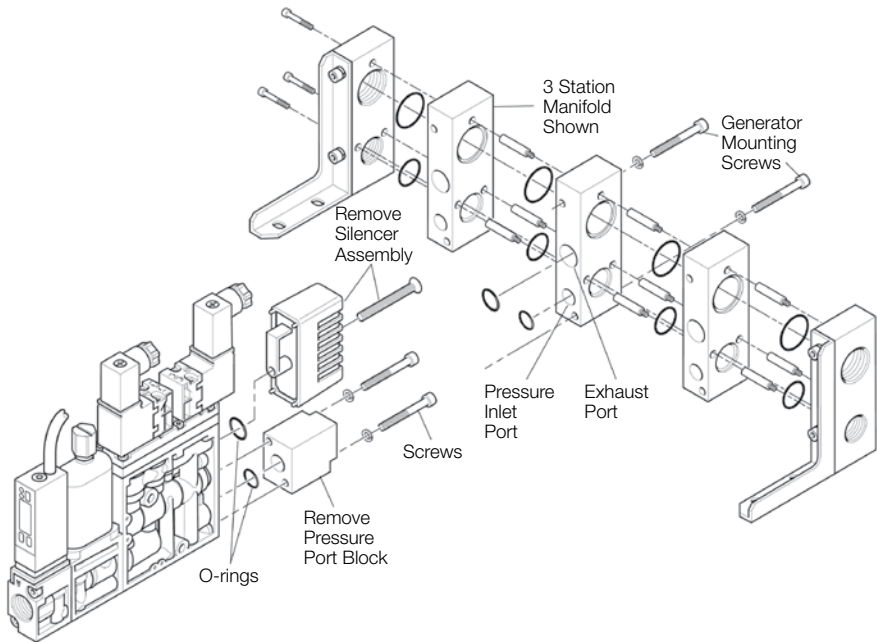
Separated elements

	Description	Order code
	End plate	MC7-MB-G
	Vacuum Generator Sub-base	MC7-MB

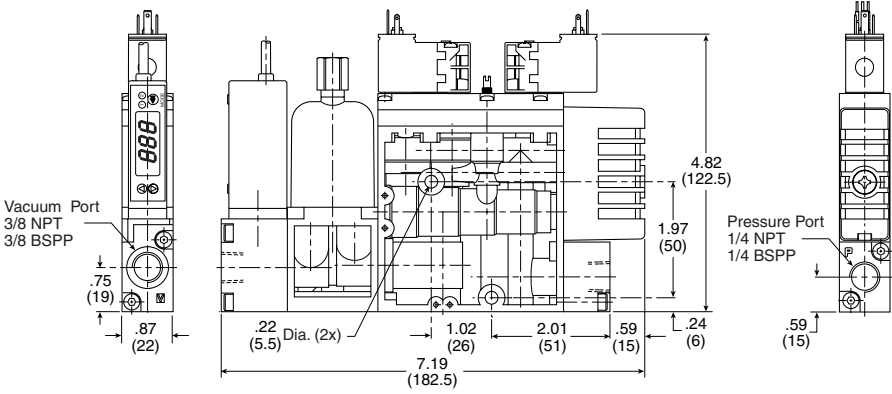
Manifold Assembly

Manifold assembly

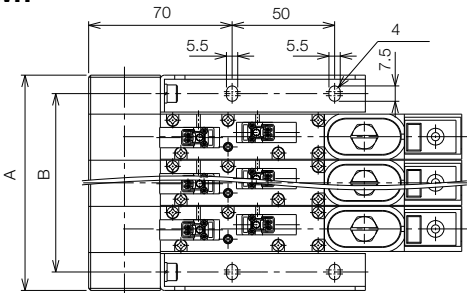
1. Assemble manifold sections to manifold end plates as shown.
2. Assemble vacuum generator by removing pressure block and exhaust muffler. Then install using screws from manifold kit and existing O rings on MC72 unit.



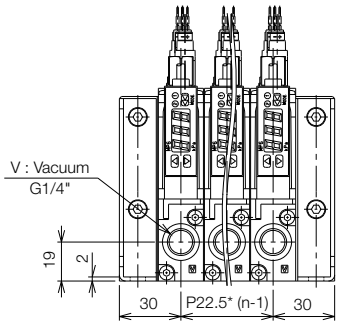
Generator



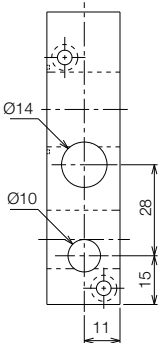
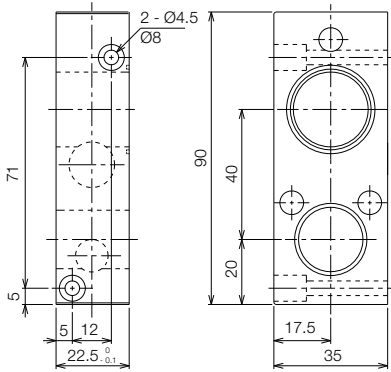
Manifold
3-Station manifold shown



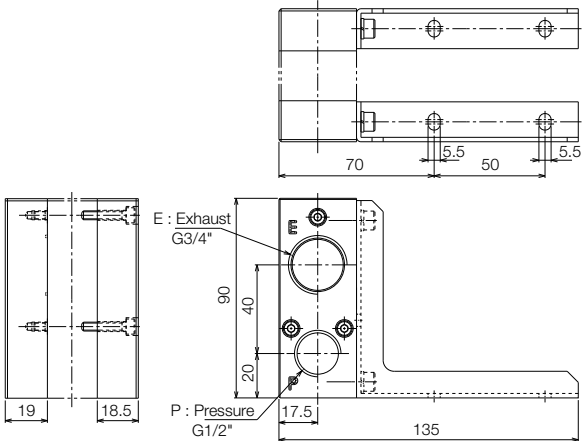
n	2	3	4	5
A	82,5	105	127,5	150
B	64,5	87	109,5	132



Vacuum Generator Sub-base

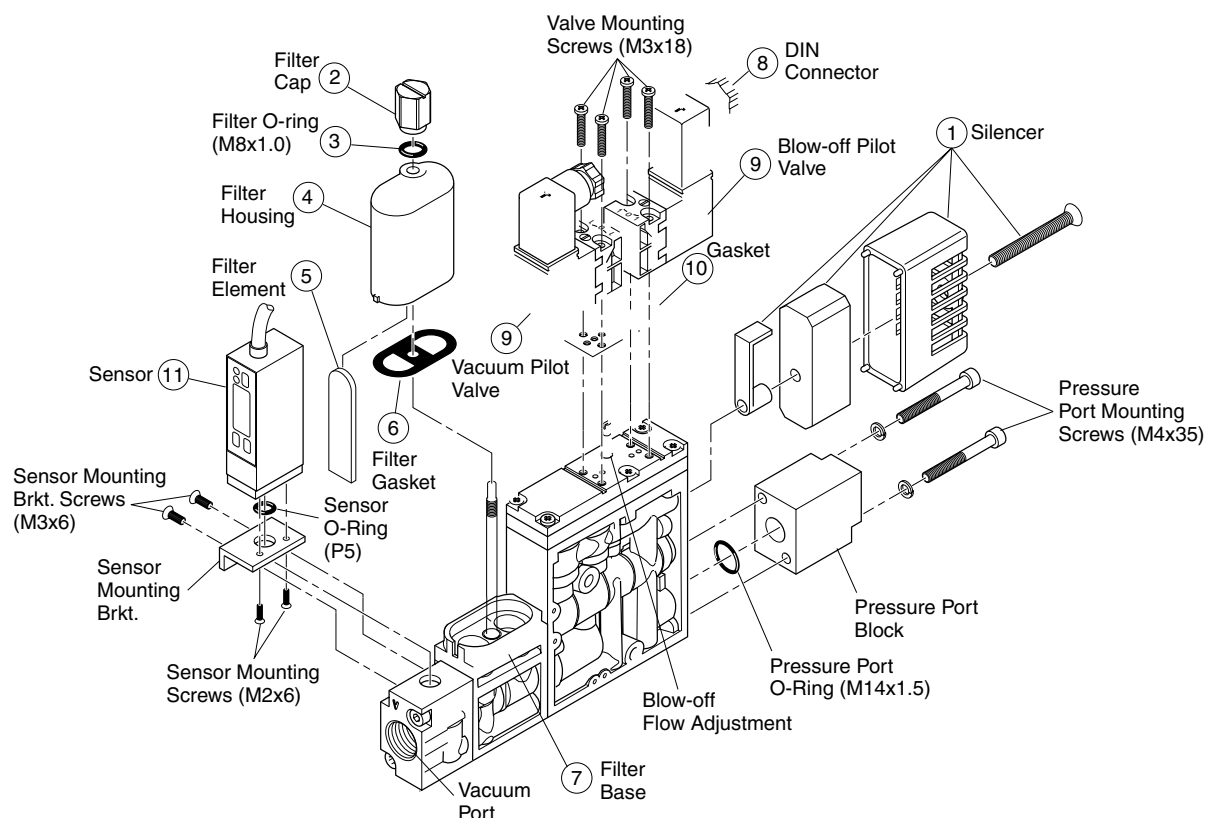


End Plates



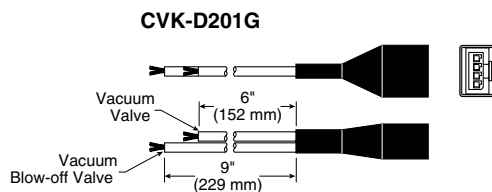
Replacement components

Item	Part number	Description
1	CVK-S	Silencer
2 thru 7	CVK-F	Filter kit
5	CVK-E	Filter element
8	P8C-D26C	DIN connector with LED
8, 9, 10	MC72-4PD	Pilot valve kit
11	MPS-V23C-NC	MPS-V23 (NPN) option
	MPS-V23C-PC	MPS-V23 (PNP) option
	MVS-201-NC	MVS-201 (NPN) option
	MVS-201-PCP	MVS-201 (PNP) option



CVK-D201G Valve Cable*

(Connects Sensor to Vacuum & Blow-off Release Pilot Valves)



* Included with MVS-201 Sensor Option 01 & 06.

Generator Blank Plate Kit

CVK-BLK

Kit includes: Blank plate, screws & o-rings

