

MCA

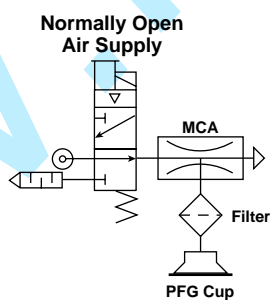
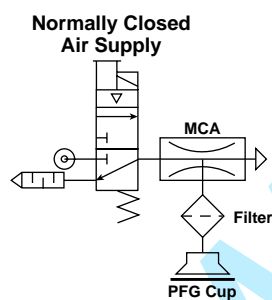


Features

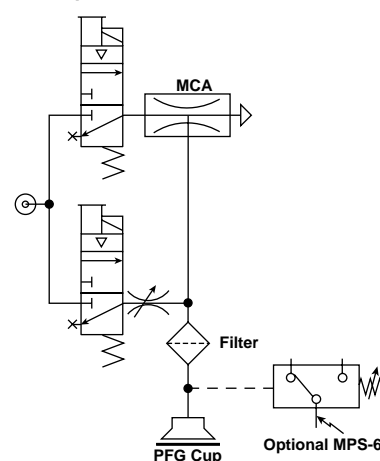
- Very Compact and Lightweight
- One-Touch Fittings for Threaded Connection
- Mount Directly to Level Compensators
- Short Response Time When Locating Near Cups
- Vacuum Flow Rates from 6 to 36 l/min

Characteristics

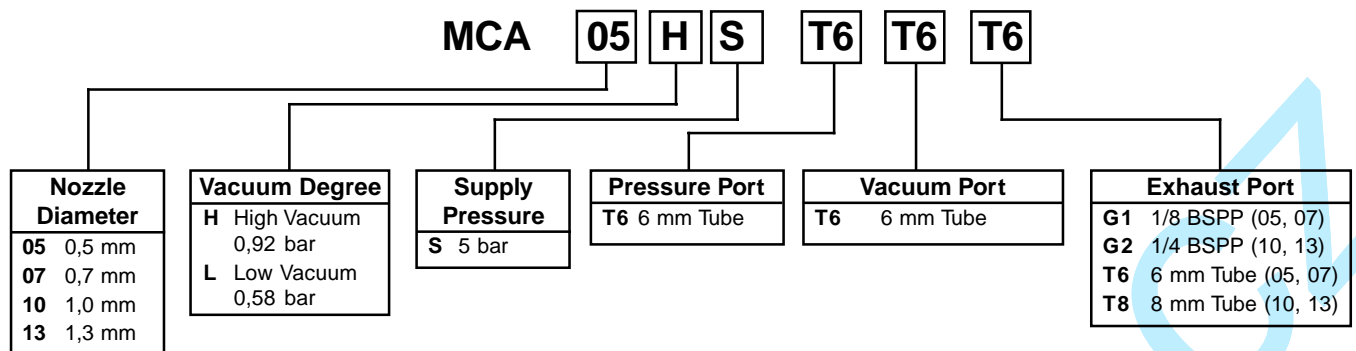
The MCA is the size of a normal push-lock tube fitting. It can be located in very restrictive areas close to the pick-and-place application to reduce the response time. The durable resin body makes the unit lightweight and friendly to end-of-arm tooling. The connections are easily interchangeable to accommodate tube fittings or female threads.



Normally Closed Air Supply with Blow-off & Optional Sensor



Model Number Index



Specifications

Media	Non-Lubricated Air, Non-Corrosive Gases
Operating Pressure	1 to 8 bar
Operating Temperature	0 to 50 °C
Material	Polycarbonate, Aluminium Fittings

Performance

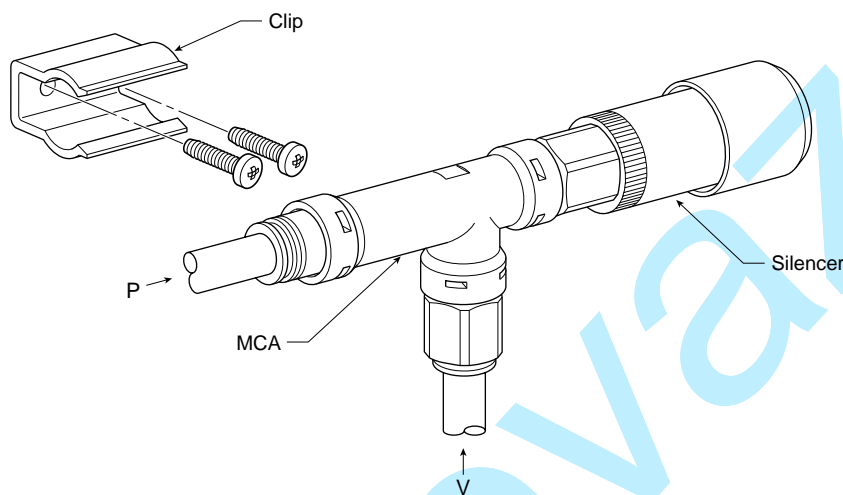
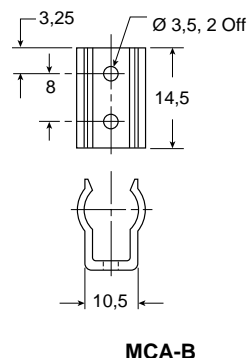
Item	Nozzle Diameter [mm]	Vacuum Degree at 5 bar [%]	Vacuum Flow [l/min]	Air Consumption [l/min]	Weight [g]
MCA05HS* MCA05LS*	0,5	88 55	5,5 11	13	17
MCA07HS* MCA07LS*	0,7	88 55	12 20	23	23
MCA10HS* MCA10LS*	1,0	88 55	24 38	47	23
MCA13HS*	1,3	88	36	79	23

Evacuation Time

Series / Nozzle Diameter	Air Supply Pressure [bar]	Air Consumption [l/min]	Evacuation Time in sec / liter to reach different Vacuum Levels [%]								
			10	20	30	40	50	60	70	80	90
MCA-05HS	5	13	0,74	1,71	2,90	4,44	6,44	8,84	12,50	17,50	—
MCA-05LS	5	13	0,43	0,95	1,61	2,55	4,12	6,81	—	—	—
MCA-07HS	5	23	0,34	0,75	1,25	1,98	3,10	4,62	6,45	9,29	—
MCA-07LS	5	23	0,20	0,44	0,76	1,25	2,63	—	—	—	—
MCA-10HS	5	47	0,18	0,39	0,65	1,00	1,45	2,06	2,94	4,36	—
MCA-10LS	5	47	0,11	0,22	0,38	0,67	1,21	2,87	—	—	—
MCA-13HS	5	79	0,13	0,26	0,44	0,69	1,01	1,41	2,07	3,69	—

Replacement Components

Item	Model Number	Generator
Silencer	MSS-01	MCA05HS/LS MCA07HS/LS
Silencer	MSM-01	MCA10HS/LS MCA13HS
Bracket	MCA-B	MCA05, 07, 10, 13



Installation

Install clip and secure MCA unit. Silencers are not included with the MCA generator series. Silencers or exhaust mufflers must be ordered separately and properly installed to manage the exhaust created by the venturi. If a tube connector is selected for the exhaust port option, plumb the exhaust to an appropriate collector.

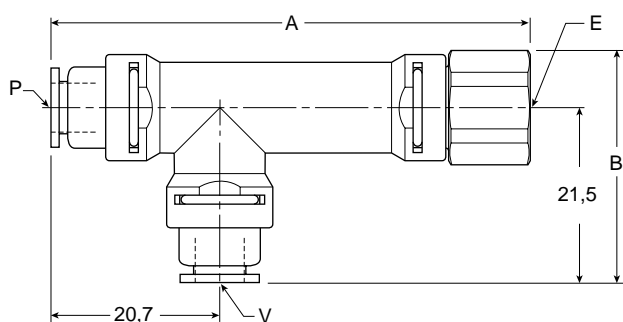
Cautions

Do not operate MCA generators outside the temperature range and pressures listed in the specifications section of this catalog.

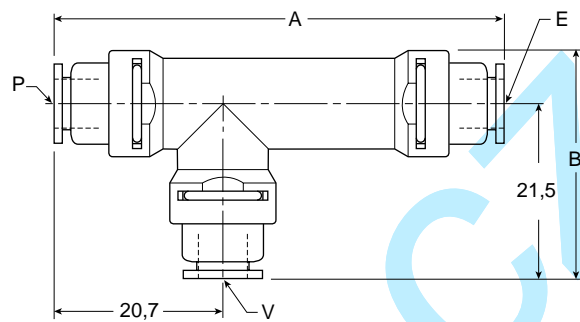
All normally closed valve supply circuits will interrupt the air supply to the venturi during a power failure or E-Stop condition. As a result, the product being transferred may be dropped, possibly creating a hazard to the surrounding environment. To avoid hazardous situations during a power loss or E-Stop condition, consider a normally open valve supply circuit or an E-Stop system.

It is always recommended to dedicate one suction cup to a single MCA generator for the best response and maximize the vacuum level per individual cup. If more than one cup is used per generator, the vacuum level of the pick-and-place system may drop to an unsafe level if one of the pads separates from the product.

Dimensions



MCA***T6T6G1/G2



MCA***T6T6T6/T8

Item	A	B	P (Pressure Port)	V (Vacuum Port)	E (Exhaust Port)
MCA05HS/LST6T6T6	55,2	28	One-touch Ø 6mm	One-touch Ø 6mm	One-touch Ø 6mm
MCA05HS/LST6T6G1	55,2	28	One-touch Ø 6mm	One-touch Ø 6mm	1/8" BSPP Female
MCA07HS/LST6T6T6	55,2	28	One-touch Ø 6mm	One-touch Ø 6mm	One-touch Ø 6mm
MCA07HS/LST6T6G1	55,2	28	One-touch Ø 6mm	One-touch Ø 6mm	1/8" BSPP Female
MCA10HS/LST6T6T8	70	29,5	One-touch Ø 6mm	One-touch Ø 6mm	One-touch Ø 8mm
MCA10HS/LST6T6G2	70	29,5	One-touch Ø 6mm	One-touch Ø 6mm	1/4" BSPP Female
MCA13HST6T6T8	70	29,5	One-touch Ø 6mm	One-touch Ø 6mm	One-touch Ø 8mm
MCA13HST6T6G2	70	29,5	One-touch Ø 6mm	One-touch Ø 6mm	1/4" BSPP Female

Millimeter