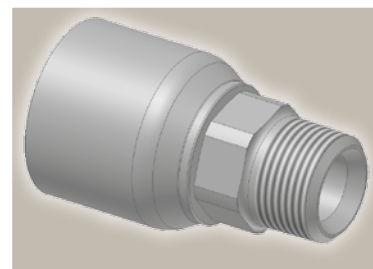
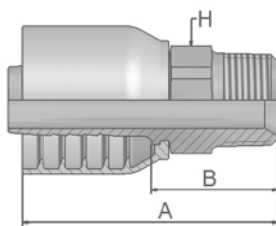


01 Male NPTF Pipe Rigid – Straight

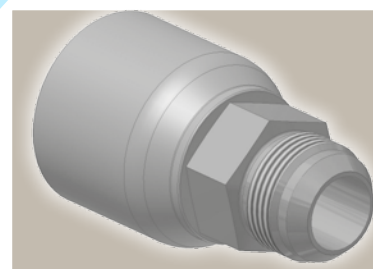
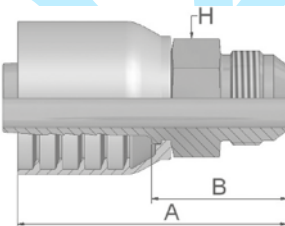
SAE J476A / J516 – AGN



| Part Number | Hose I.D. | | | | Thread NPTF | A mm | B mm | H mm |
|----------------|-----------|------|------|------|----------------|---------|---------|---------|
| | DN | Inch | Size | mm | | | | |
| 10170-6-6-SM | 10 | 3/8 | -6 | 9.5 | 3/8-18 | 60 | 31 | 19 |
| 10170-12-8-SM | 12 | 1/2 | -8 | 12.7 | 3/4-14 | 68 | 33 | 27 |
| 10170-8-10-SM | 16 | 5/8 | -10 | 15.9 | 1/2-14 | 75 | 38 | 24 |
| 10170-12-10-SM | 16 | 5/8 | -10 | 15.9 | 3/4-14 | 71 | 34 | 27 |
| 10170-12-12-SM | 19 | 3/4 | -12 | 19.1 | 3/4-14 | 79 | 39 | 27 |
| 10170-16-12-SM | 19 | 3/4 | -12 | 19.1 | 1-11 1/2 | 79 | 39 | 36 |
| 10170-16-16-SM | 25 | 1 | -16 | 25.4 | 1-11 1/2 | 93 | 46 | 36 |

03 Male JIC 37° – Rigid Straight

ISO12151-5-S – AGJ



| Part Number | Hose I.D. | | | | Thread UNF | A mm | B mm | H mm |
|----------------|-----------|------|------|------|---------------|---------|---------|---------|
| | DN | Inch | Size | mm | | | | |
| 10370-6-6-SM | 10 | 3/8 | -6 | 9.5 | 9/16x18 | 60 | 31 | 19 |
| 10370-8-6-SM | 10 | 3/8 | -6 | 9.5 | 3/4x16 | 59 | 29 | 19 |
| 10370-8-8-SM | 12 | 1/2 | -8 | 12.7 | 3/4x16 | 68 | 33 | 22 |
| 10370-10-8-SM | 12 | 1/2 | -8 | 12.7 | 7/8x14 | 67 | 32 | 24 |
| 10370-12-8-SM | 12 | 1/2 | -8 | 12.7 | 1 1/16x12 | 71 | 36 | 27 |
| 10370-10-10-SM | 16 | 5/8 | -10 | 15.9 | 7/8x14 | 75 | 38 | 24 |
| 10370-12-10-SM | 16 | 5/8 | -10 | 15.9 | 1 1/16x12 | 75 | 36 | 27 |
| 10370-12-12-SM | 19 | 3/4 | -12 | 19.1 | 1 1/16x12 | 82 | 42 | 27 |
| 10370-16-12-SM | 19 | 3/4 | -12 | 19.1 | 1 5/16x12 | 77 | 38 | 36 |
| 10370-16-16-SM | 25 | 1 | -16 | 25.4 | 1 5/16x12 | 94 | 47 | 36 |

Approved **fitting series** for **hose types**, depending on size:

70 371LT 372 372RH 372TC 701 701 TC F42-8 SX35